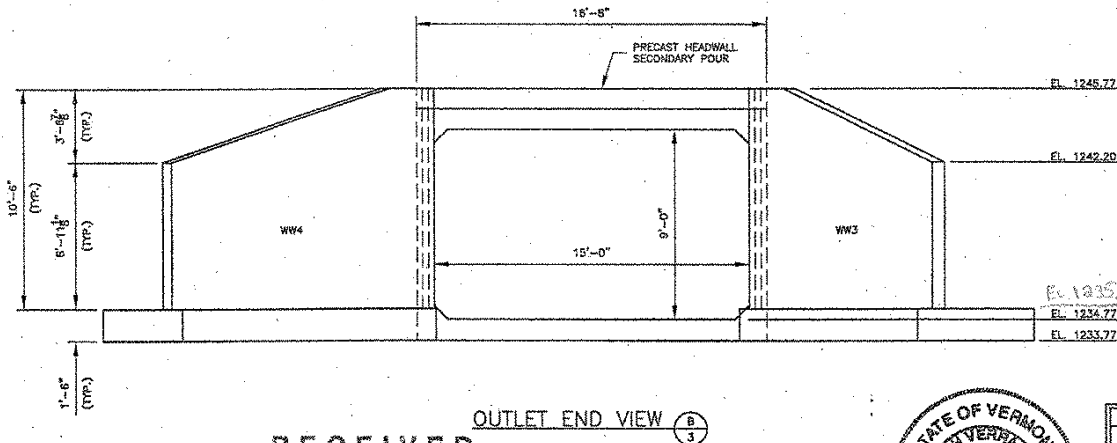
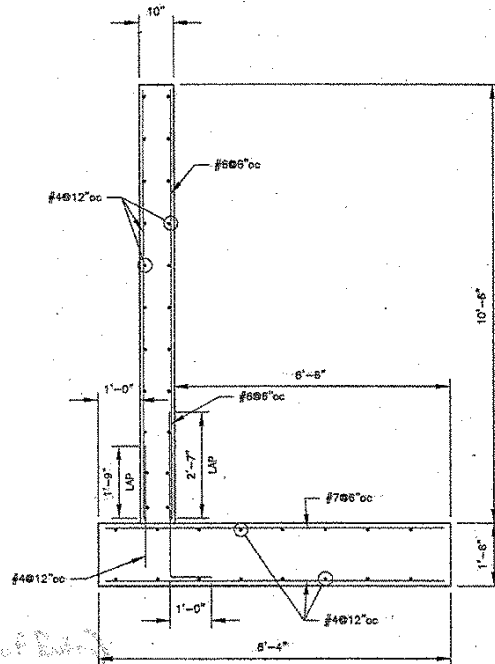


INLET END VIEW (A)



OUTLET END VIEW (B)



WINGWALL REINFORCING SECTION
(ALL COVER 1 1/2")

RECEIVED

OK'D BY JEL OK'D BY _____

MAY 25 2007

RESUBMIT _____ APPROVED _____

BY WJ DATE _____

5/29/07 (As noted)



Ralph Verastro
5-24-07

REV. NO.	DATE	REVISION
2	5/24/07	REVISED WINGWALLS
1	5/21/07	REVISED WINGWALL DETAIL

PREPARED BY: **DELTA ENGINEERS**
 184 COURT STREET, BINGHAMTON, NY 13901
 TEL: (607) 231-6800 FAX: (607) 231-6650

PREPARED FOR: **PRECAST INC.**
 78 PRECAST ROAD
 MILTON, VERMONT 05468
 PHONE (802) 883-2401 FAX (802) 883-1542

DATE: 5/15/07 SHEET TITLE: END VIEWS & WINGWALL SECTION DRAWN BY: CJB
 SCALE: N.T.S. CVD BY: JLL

PROJECT: VT 105, BRIDGE #50
 15'-0" X 9'-0" BOX CULVERT
 JAY, VT

CONTRACTOR: SHEET NO.: SD-01
 TOTAL SHEET NO.: 2007.004.002 SHEET NO.: 3 OF 6