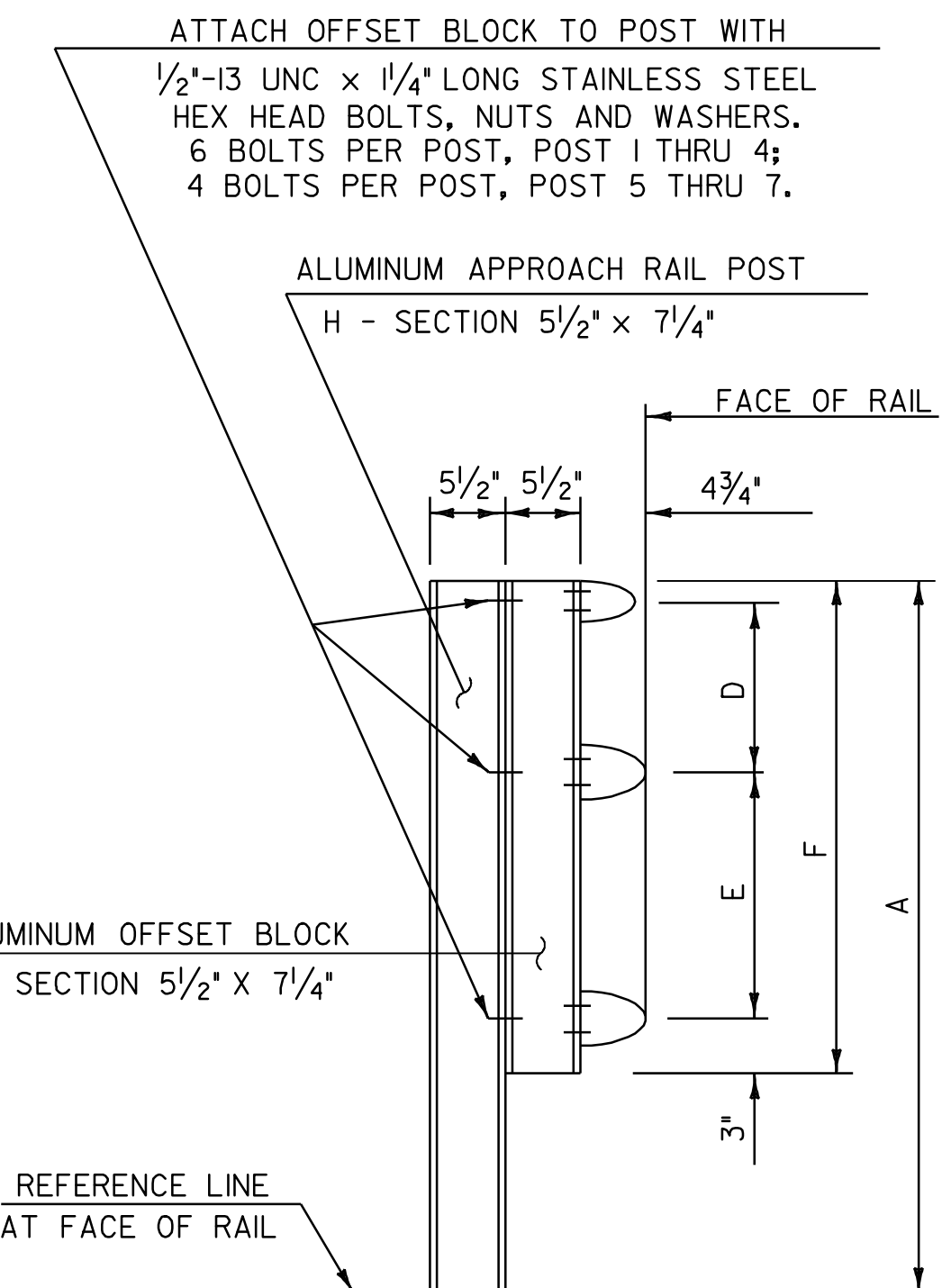
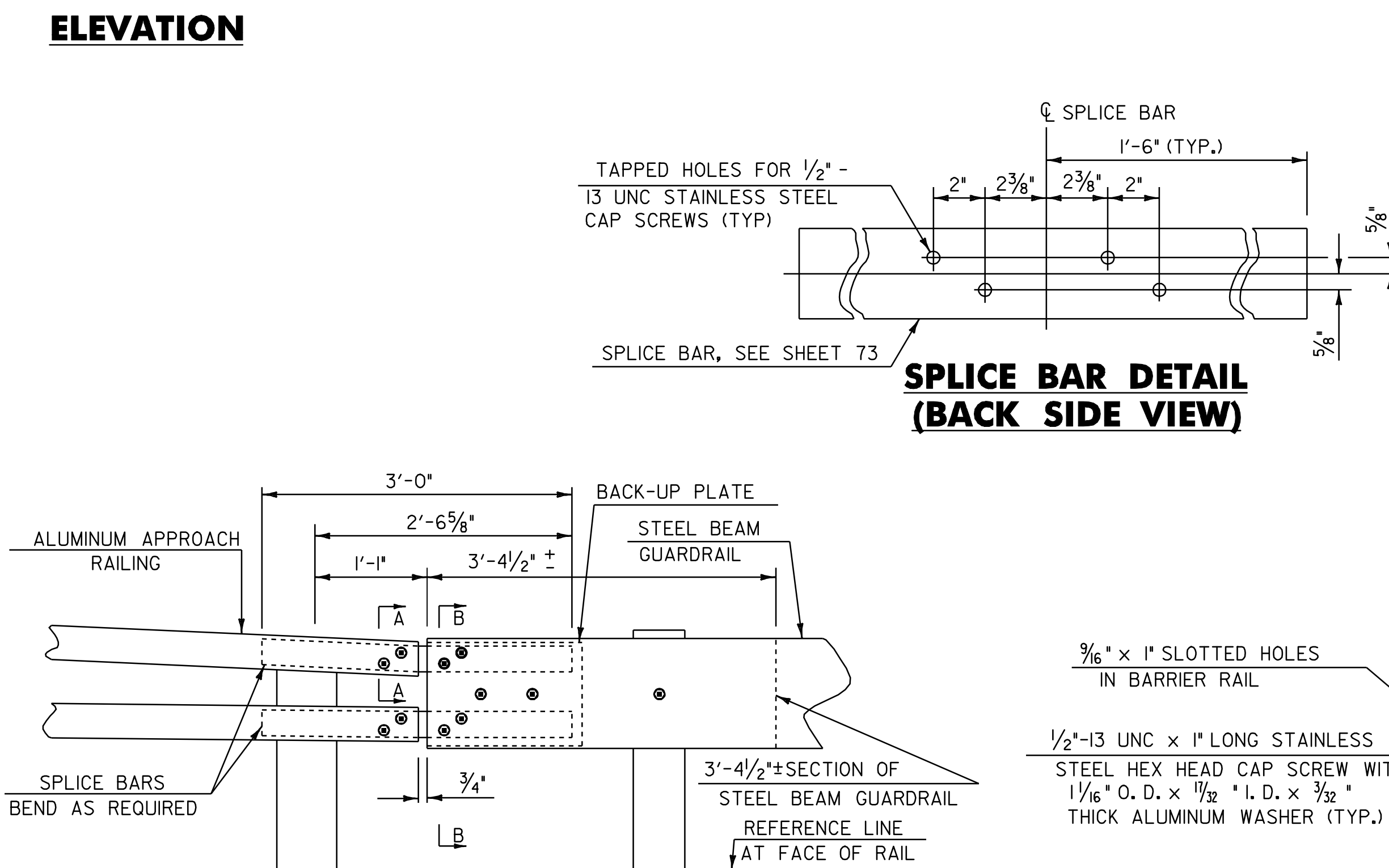


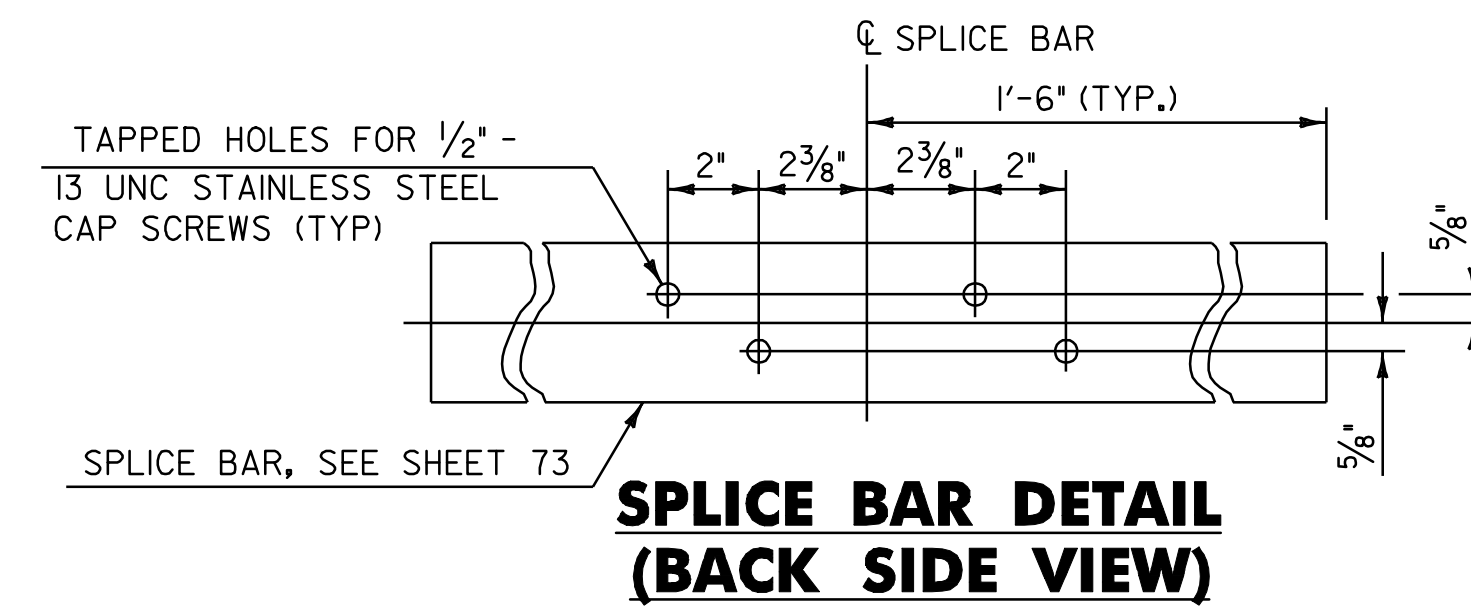
**POST ELEVATION & SECTION**  
(SEE NOTE 7)



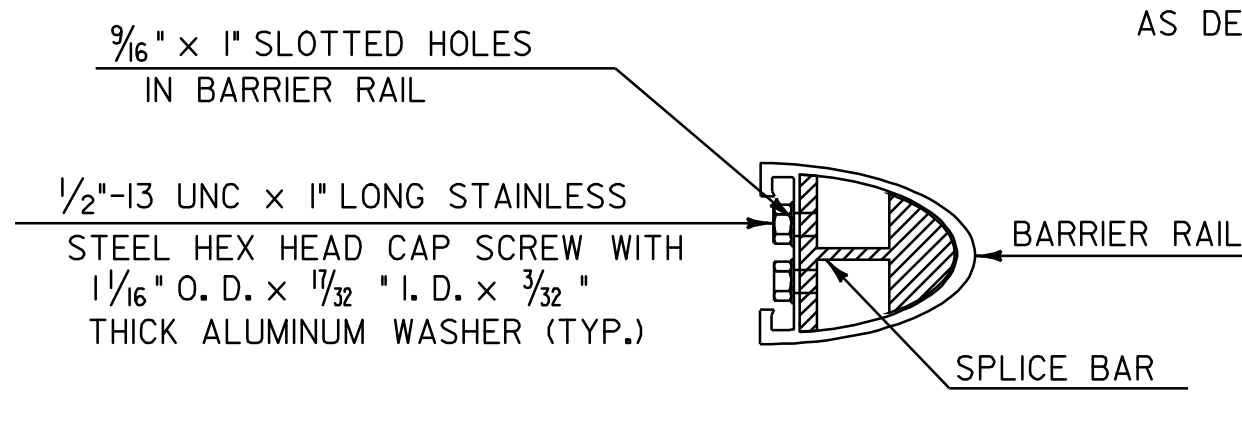
**RAIL DETAIL**  
(SEE NOTE 7)



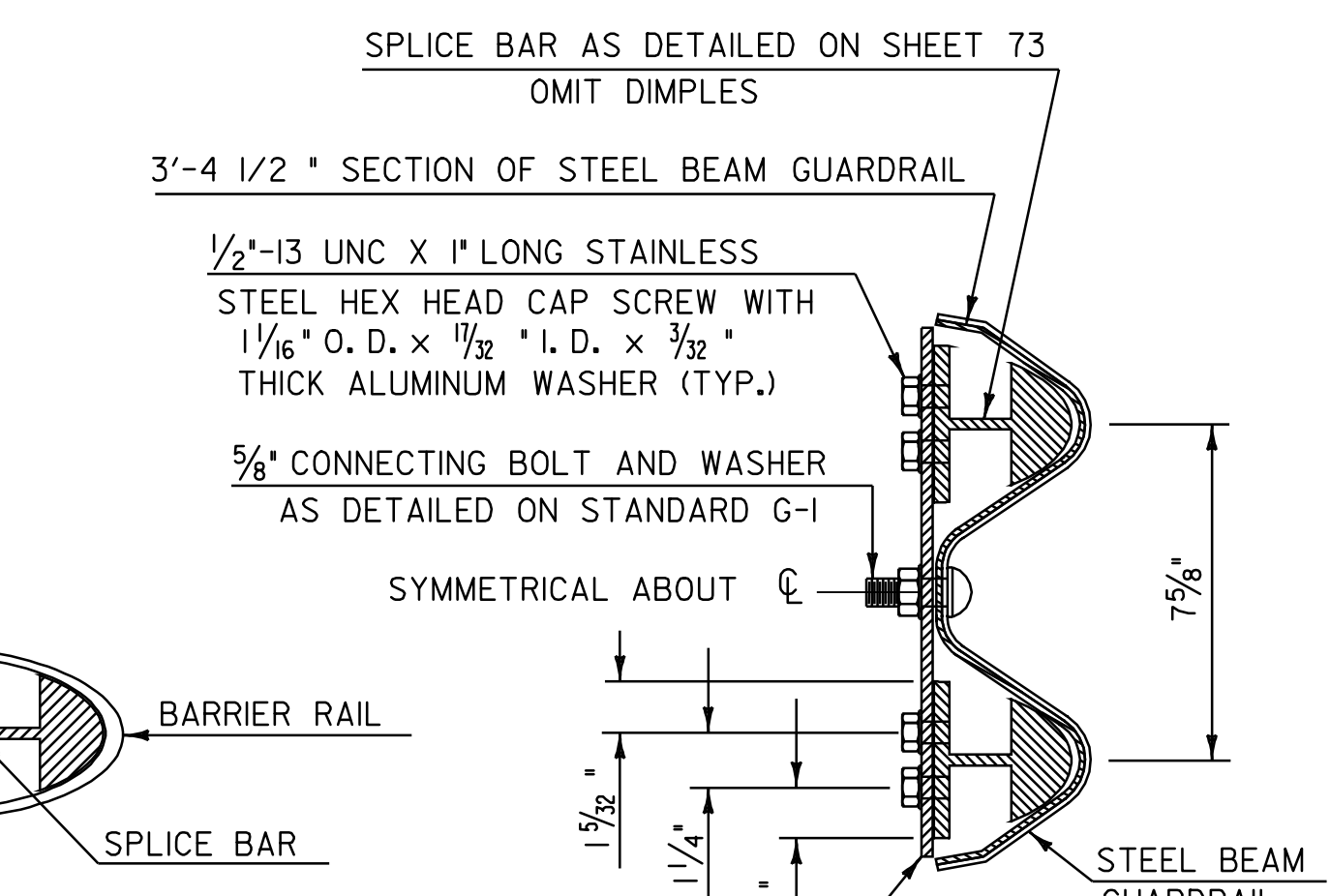
**SPlice DETAIL**



**SPlice BAR DETAIL (BACK SIDE VIEW)**

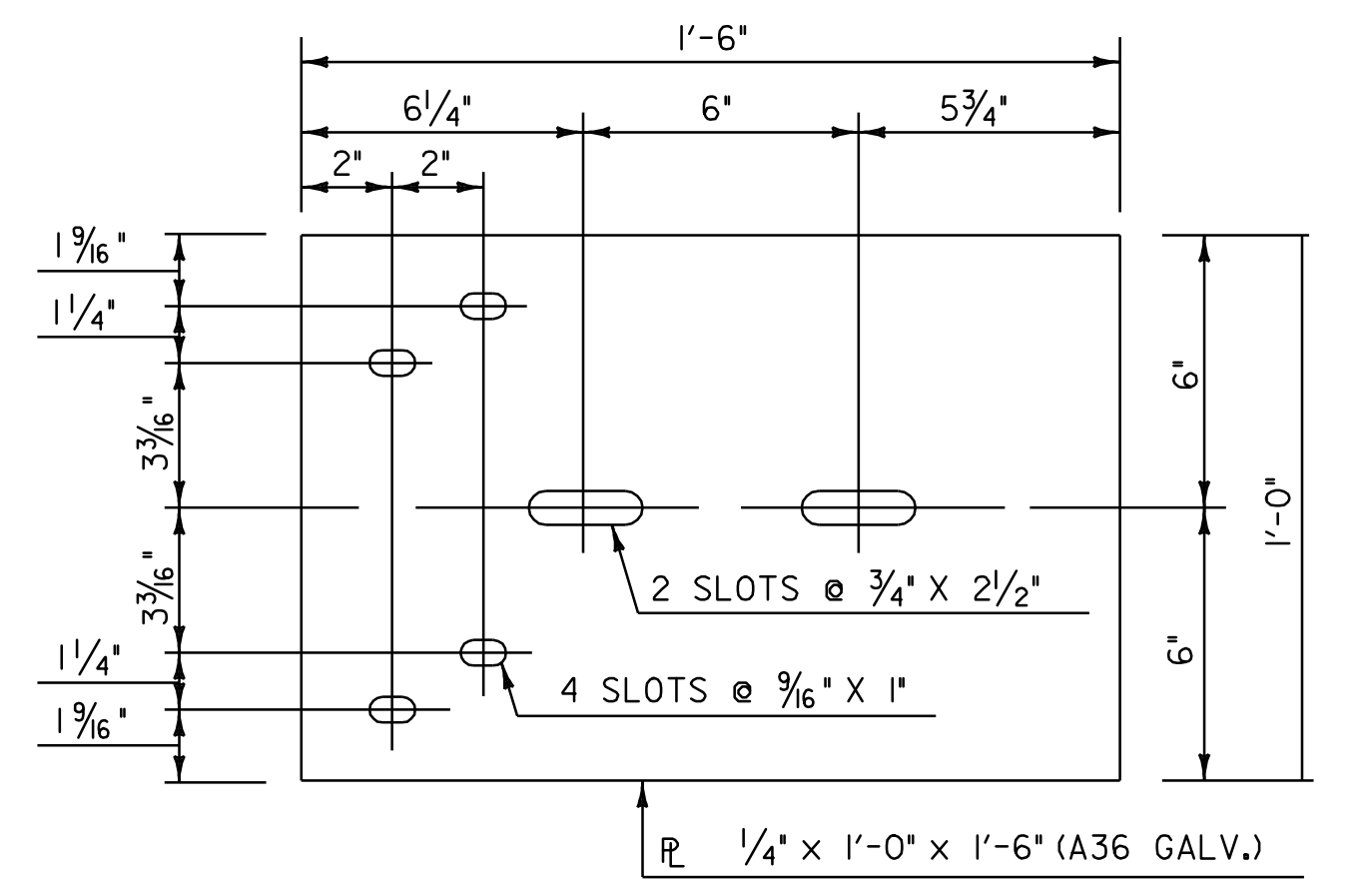


**SECTION A - A**



**SECTION B - B**

- NOTES**
- POST 1 THROUGH 7 SHALL BE EXTRUDED ALUMINUM.
  - ALL STRUCTURAL STEEL SHALL BE ASTM A-36 GALVANIZED AFTER FABRICATION.
  - ALL ITEMS NOT OTHERWISE INDICATED SHALL MEET THE SPECIFICATION REQUIREMENTS OF THE STANDARD SHEETS ON WHICH THEY ARE DETAILED.
  - SEE STANDARD G-1 FOR STEEL BEAM GUARDRAIL DETAILS.
  - THE COST OF ALL MATERIALS AND LABOR FOR THE SPLICE BETWEEN THE ALUMINUM APPROACH RAILING AND THE STEEL BEAM GUARDRAIL SHALL BE INCIDENTAL TO ITEM 621.74 ALUMINUM APPROACH RAILING.
  - DIMENSIONS SHOWN ARE FROM A REFERENCE LINE AT THE FACE OF POST FOR A NORMAL CROWNED SECTION. APPROPRIATE CORRECTIONS SHALL BE MADE FOR CROSS SLOPES OTHER THAN A NORMAL SECTION.
  - SEE SHEET 74 FOR ALUMINUM APPROACH RAILING DIMENSIONS TABLE.



**BACK-UP PLATE DETAIL**

<b>ALUMINUM APPROACH RAILING SHEET #1</b>	PROJECT NAME: WALLINGFORD - RUTLAND TOWN	
	PROJECT NUMBER: NH 2408(1)S	
	FILE NAME: p04b050.dgn	PLOT DATE: \$DATE\$
	PROJECT LEADER: D.E.G.	DRAWN BY: C.A.K.
DESIGNED BY: J.S.P.	CHECKED BY: D.E.G.	
IPARM FILE: p04b050aar1.i	SHEET 72 OF 80	