

646.414 DURABLE 6" WHITE LINE (MOD.) (RETROREFLECTIVITY/INLAID)
(ALL LINES WILL INCLUDE EDGE LINE BREAKS AND RADIUS FOR TOWN HIGHWAYS)

CLARENDON:
STA. 64+00.00 - STA. 80+00.00 DASHED LINE C/L
STA. 64+00.00 - STA. 80+00.00 EDGE LINE LT
STA. 64+00.00 - STA. 66+00.00 DOTTED LANE LINE RT
STA. 77+60.00 - STA. 80+00.00 SOLID LANE LINE RT
STA. 77+75.00 - STA. 78+75.00 SOLID LANE LINE LT
STA. 78+75.00 - STA. 80+00.00 DOTTED LANE LINE LT

646.415 DURABLE 6" YELLOW LINE (MOD.) (RETROREFLECTIVITY/INLAID)
(ALL LINES WILL INCLUDE EDGE LINE BREAKS AND RADIUS FOR TOWN HIGHWAYS)

CLARENDON:
STA. 64+00.00 - STA. 80+00.00 EDGE LINE RT

646.40 DURABLE 4" WHITE LINE (MOD.) (RETROREFLECTIVITY/INLAID)

CLARENDON:
STA. 77+40.48 EDGE LINE LT, T-I

646.41 DURABLE 4" YELLOW LINE (MOD.) (RETROREFLECTIVITY/INLAID)

CLARENDON:
STA. 77+40.48 DOUBLE SOLID LT, T-I

646.614 TEMPORARY 6" WHITE LINE (PAINT)
(ALL LINES WILL INCLUDE EDGE LINE BREAKS AND RADIUS FOR TOWN HIGHWAYS)

CLARENDON:
STA. 64+00.00 - STA. 80+00.00 DASHED LINE C/L
STA. 64+00.00 - STA. 80+00.00 EDGE LINE LT
STA. 64+00.00 - STA. 66+00.00 DOTTED LANE LINE RT
STA. 77+60.00 - STA. 80+00.00 SOLID LANE LINE RT
STA. 77+75.00 - STA. 78+75.00 SOLID LANE LINE LT
STA. 78+75.00 - STA. 80+00.00 DOTTED LANE LINE LT

646.615 TEMPORARY 6" YELLOW LINE (PAINT)
(ALL LINES WILL INCLUDE EDGE LINE BREAKS AND RADIUS FOR TOWN HIGHWAYS)

CLARENDON:
STA. 64+00.00 - STA. 80+00.00 EDGE LINE RT

646.60 TEMPORARY 4" WHITE LINE (PAINT)

CLARENDON:
STA. 77+40.48 EDGE LINE LT, T-I

646.61 TEMPORARY 4" YELLOW LINE (PAINT)

CLARENDON:
STA. 77+40.48 DOUBLE SOLID LT, T-I

646.46 DURABLE 24" STOP BAR (THERMOPLASTIC)

CLARENDON:
STA. 77+40.48 LT, T-I

646.66 TEMPORARY 24" STOP BAR (PAINT)

CLARENDON:
STA. 77+40.48 LT, T-I

646.50 DURABLE LETTER OR SYMBOL (THERMOPLASTIC)

CLARENDON:
STA. 77+40.48 LT, T-I, "S,T,O,P" (4 EA)
STA. 77+74.3 RT, ARROW (IEA) 77+85 RT
STA. 77+89.9 LT, ARROW (IEA) 78+05 LT
STA. 78+30.3 LT, 'O,N,L,Y' (4 EA) 78+57 LT
STA. 78+33.6 RT, 'O,N,L,Y' (4 EA)
STA. 78+70.7 LT, ARROW (IEA) 79+10 LT
STA. 78+92.9 RT, ARROW (IEA) 79+03 RT
STA. 79+52.2 RT, 'O,N,L,Y' (4 EA)

646.70 TEMPORARY LETTER OR SYMBOL (PAINT)

CLARENDON:
STA. 77+40.48 LT, T-I, "S,T,O,P" (8 EA)
STA. 77+74.3 RT, ARROW (2 EA)
STA. 77+89.9 LT, ARROW (2 EA)
STA. 78+70.7 LT, ARROW (2 EA)

646.81 PAINTED CURB

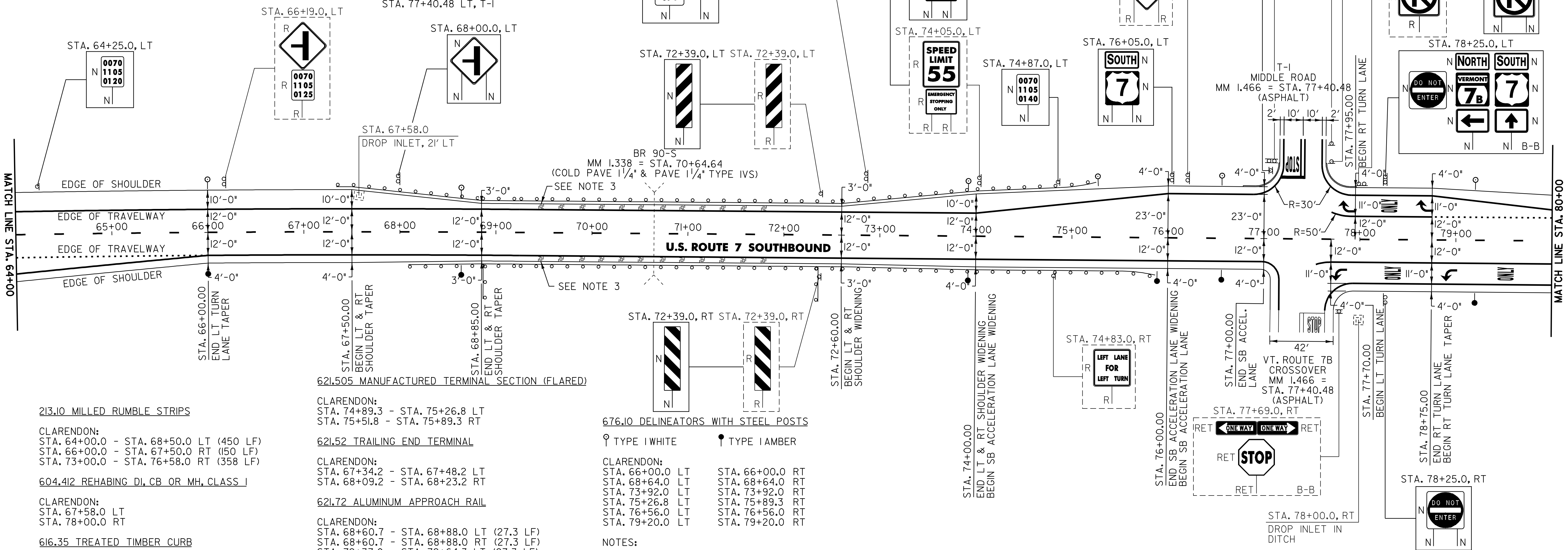
CLARENDON:
STA. 76+78.0 - STA. 77+28.0 LT (80 LF)
STA. 77+52.0 - STA. 77+96.0 LT (65 LF)

675.50 REMOVING SIGNS

AS SHOWN - 17

675.60 ERECTING SALVAGED SIGNS

AS SHOWN - 2



213.10 MILLED RUMBLE STRIPS

CLARENDON:
STA. 64+00.0 - STA. 68+50.0 LT (450 LF)
STA. 66+00.0 - STA. 67+50.0 RT (150 LF)
STA. 73+00.0 - STA. 76+58.0 RT (358 LF)

604.412 REHABING DI, CB OR MH, CLASS 1

CLARENDON:
STA. 67+58.0 LT
STA. 78+00.0 RT

616.35 TREATED TIMBER CURB

CLARENDON:
STA. 67+43.0 - STA. 68+87.0 LT (144 LF)

621.20 STEEL BEAM GUARDRAIL (GALVANIZED)
STA. 72+75 LT (25')
STA. 67+48.2 - STA. 68+60.7 LT (12.5 LF) 110.75
STA. 68+23.2 - STA. 68+60.7 RT (37.5 LF) 35.75
STA. 68+87.0 RT (37.5 LF) (50 LF)
STA. 72+38.0 RT (37.5 LF) (50 LF)
STA. 72+64.3 - STA. 74+89.3 LT (225 LF) 223.25
STA. 72+64.3 - STA. 75+51.8 RT (87.5 LF) 285.75

621.505 MANUFACTURED TERMINAL SECTION (FLARED)

CLARENDON:
STA. 74+89.3 - STA. 75+26.8 LT
STA. 75+51.8 - STA. 75+89.3 RT

621.52 TRAILING END TERMINAL

CLARENDON:
STA. 67+34.2 - STA. 67+48.2 LT
STA. 68+09.2 - STA. 68+23.2 RT

621.72 ALUMINUM APPROACH RAIL

CLARENDON:
STA. 68+60.7 - STA. 68+88.0 LT (27.3 LF)
STA. 68+60.7 - STA. 68+88.0 RT (27.3 LF)
STA. 72+37.0 - STA. 72+64.3 LT (27.3 LF)
STA. 72+37.0 - STA. 72+64.3 RT (27.3 LF)

621.80 REMOVAL AND DISPOSAL OF GUARDRAIL

CLARENDON:
STA. 67+37.0 - STA. 68+88.0 LT (151 LF)
STA. 68+12.0 - STA. 68+88.0 RT (76 LF)
STA. 68+87.0 RT (37.5 LF)
STA. 72+37.0 - STA. 74+40.0 LT (203 LF)
STA. 72+37.0 - STA. 74+40.0 RT (203 LF)
STA. 72+38.0 RT (37.5 LF)

676.10 DELINEATORS WITH STEEL POSTS

♀ TYPE I WHITE ♂ TYPE I AMBER

CLARENDON:
STA. 66+00.0 LT STA. 66+00.0 RT
STA. 68+64.0 LT STA. 68+64.0 RT
STA. 73+92.0 LT STA. 73+92.0 RT
STA. 75+26.8 LT STA. 75+89.3 RT
STA. 76+56.0 LT STA. 76+56.0 RT
STA. 79+20.0 LT STA. 79+20.0 RT

NOTES:

- PAVING LIMIT ON ALL TOWN AND STATE HIGHWAYS SHALL BE MEASURED 25 FT BACK FROM U.S. ROUTE 7 EDGE OF SHOULDER UNLESS DENOTED OTHERWISE ON THE PLANS OR AS DIRECTED BY THE RESIDENT ENGINEER.
- SEE SHEETS 72 TO 74 FOR ALUMINUM APPROACH RAILING DETAILS. SEE SHEET 75 FOR BR 90-S DETAILS.
- THERE ARE 24 EXISTING DRAINAGE STRUCTURES LOCATED IN THE LEFT AND RIGHT SHOULDERS ON BR 90-S. HEIGHT ADJUSTMENTS OR REHABILITATIONS WILL NOT BE REQUIRED.

SIGN LEGEND
R = REMOVE
S = SALVAGE
N = NEW
RET = RETAIN
B-B = BACK TO BACK
EXISTING = - - - - -
NEW = _____

PROJECT LAYOUT SHEET #7

PROJECT NAME: WALLINGFORD - RUTLAND TOWN
PROJECT NUMBER: NH 2408(1)S
FILE NAME: p04b050.dgn
PROJECT LEADER: D.E.G.
DESIGNED BY: J.S.P.
IPARM FILE: p04b050L07.1
PLOT DATE: \$DATE\$
DRAWN BY: C.A.K.
CHECKED BY: D.E.G.
SHEET 19 OF 80