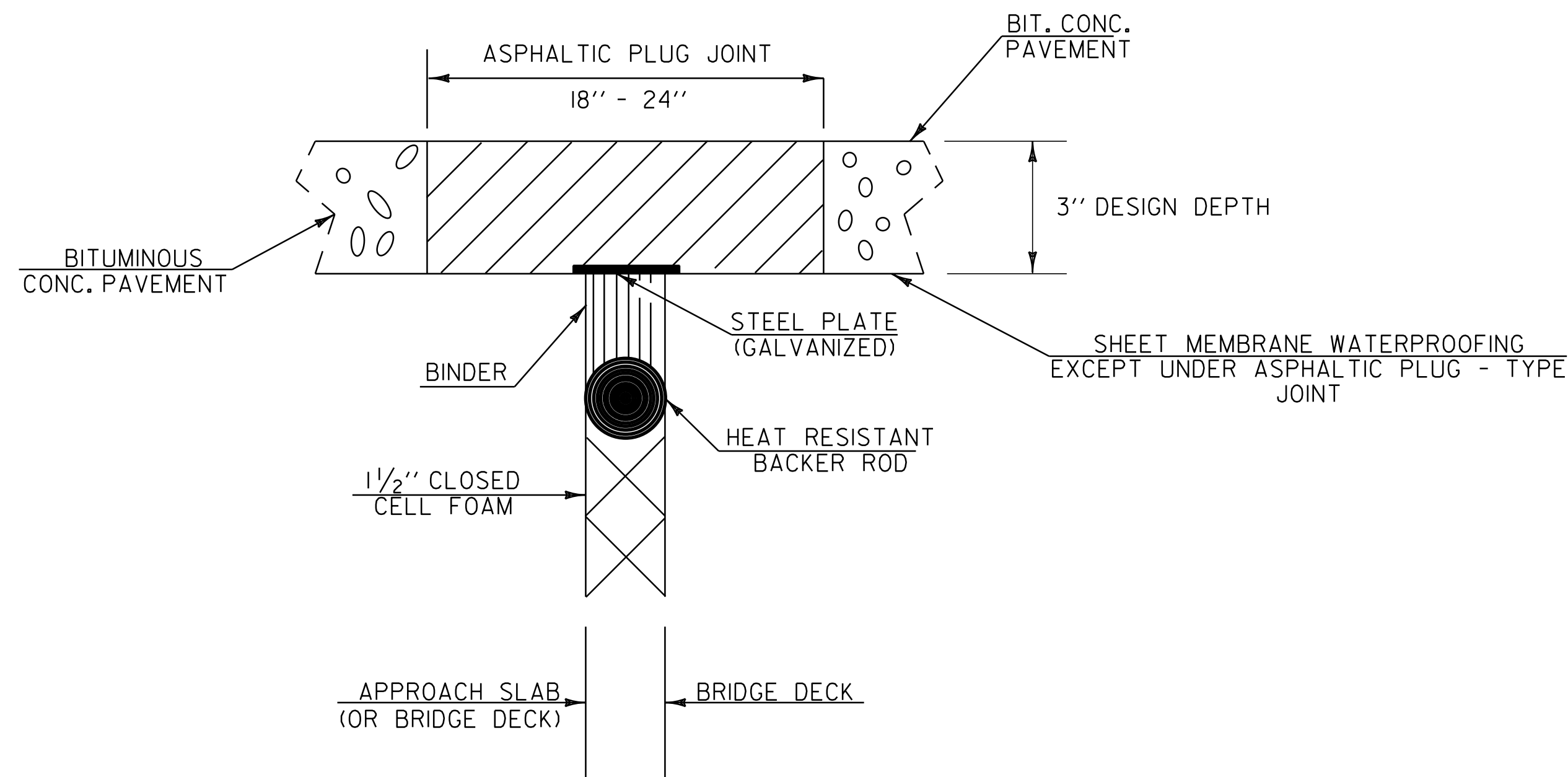


• REFER TO SPECIAL PROVISIONS FOR BASIS OF PAYMENT

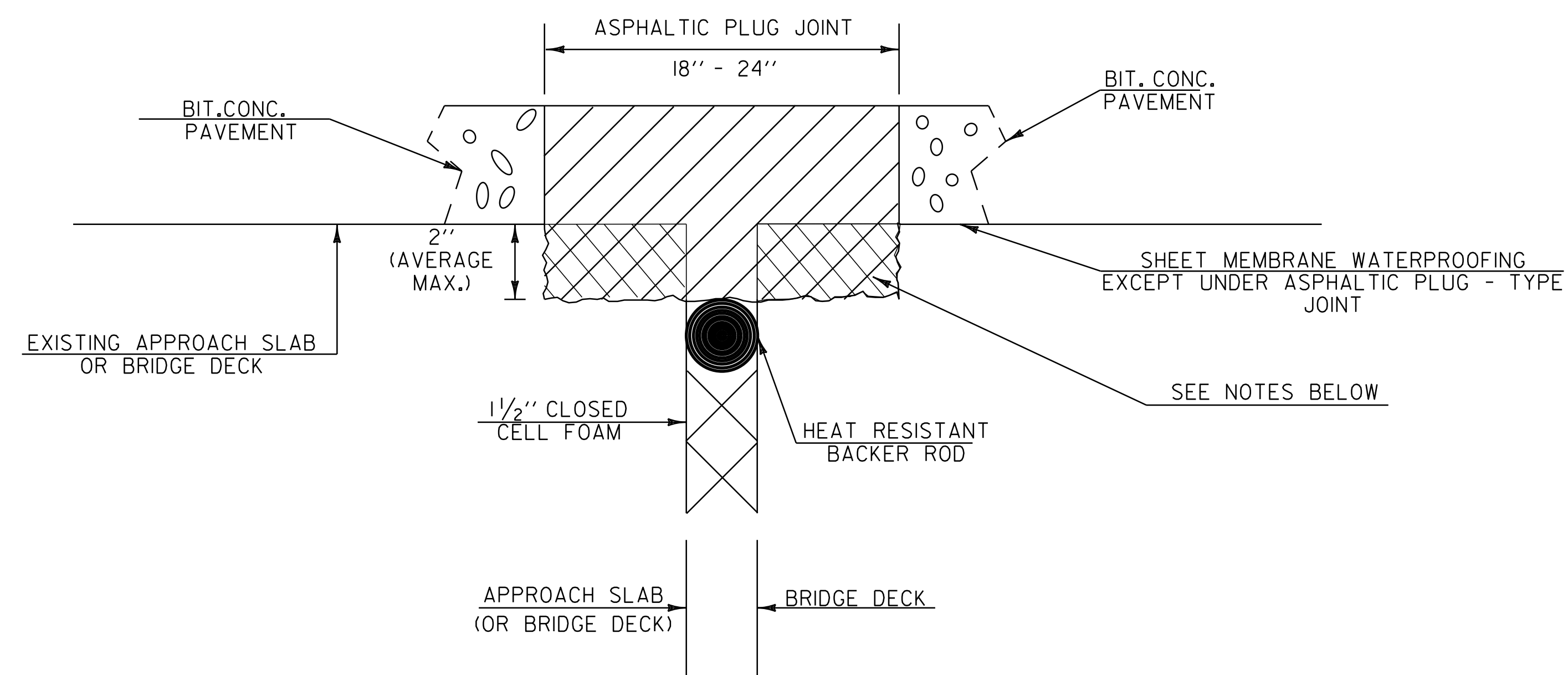


ASPHALTIC PLUG-TYPE JOINT DETAIL

LOCATION

BRIDGE #3 (40 FT EACH JOINT)
 STA 125+08
 STA 125+81
 STA 126+55
 STA 127+30

NOTE: REFER TO NOTE UNDER DETAIL AT RIGHT.



**ASPHALTIC PLUG-TYPE JOINT DETAIL
 REMOVAL OF UP TO 2" DETERIORATED CONCRETE**

NOTES:

1. UPON ENCOUNTERING UP TO 2" AVERAGE OF DETERIORATED CONCRETE, THE CONTRACTOR SHALL REMOVE THE DETERIORATED MATERIAL AND REPLACE IT WITH THE ASPHALTIC PLUG JOINT MATERIAL AS DIRECTED BY THE RESIDENT ENGINEER.
2. REMOVAL OF THE DETERIORATED CONCRETE WILL NOT BE PAID SEPARATELY BUT WILL BE CONSIDERED INCIDENTAL TO THE UNIT BID PRICE FOR THE ITEM 516.10. THE ADDITIONAL PLUG JOINT MATERIAL BELOW THE DESIGN DEPTH TO REPLACE THE DETERIORATED CONCRETE WILL BE CONSIDERED INCIDENTAL TO THE UNIT BID PRICE FOR THE ITEM 516.10.
3. THE STEEL PLATE IN THE ASPHALTIC PLUG JOINT MAY BE OMITTED AS SHOWN IN THE DETAIL ABOVE IF DIRECTED BY THE RESIDENT ENGINEER.

PROJECT TYPICAL SHEET 3	PROJECT NAME: SPRINGFIELD	
	PROJECT NUMBER: STP 2405(1)S	
	FILE NAME: /pave/04b038/pb038.dgn	PLOT DATE: 19-JUN-2012 08:16
	PROJECT LEADER: M. WOOLAVER	DRAWN BY: JLR
DESIGNED BY: JLR	CHECKED BY: JLR	
pb038+y03.i	SHEET 5	OF 42