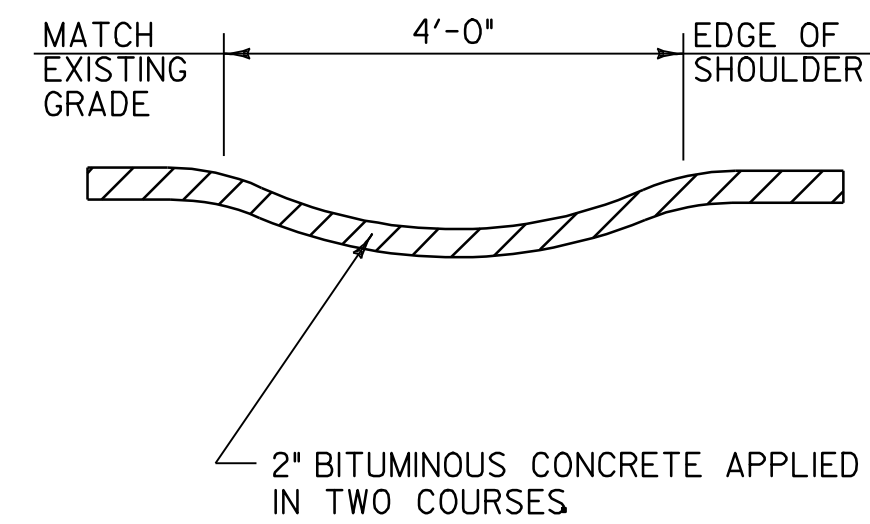
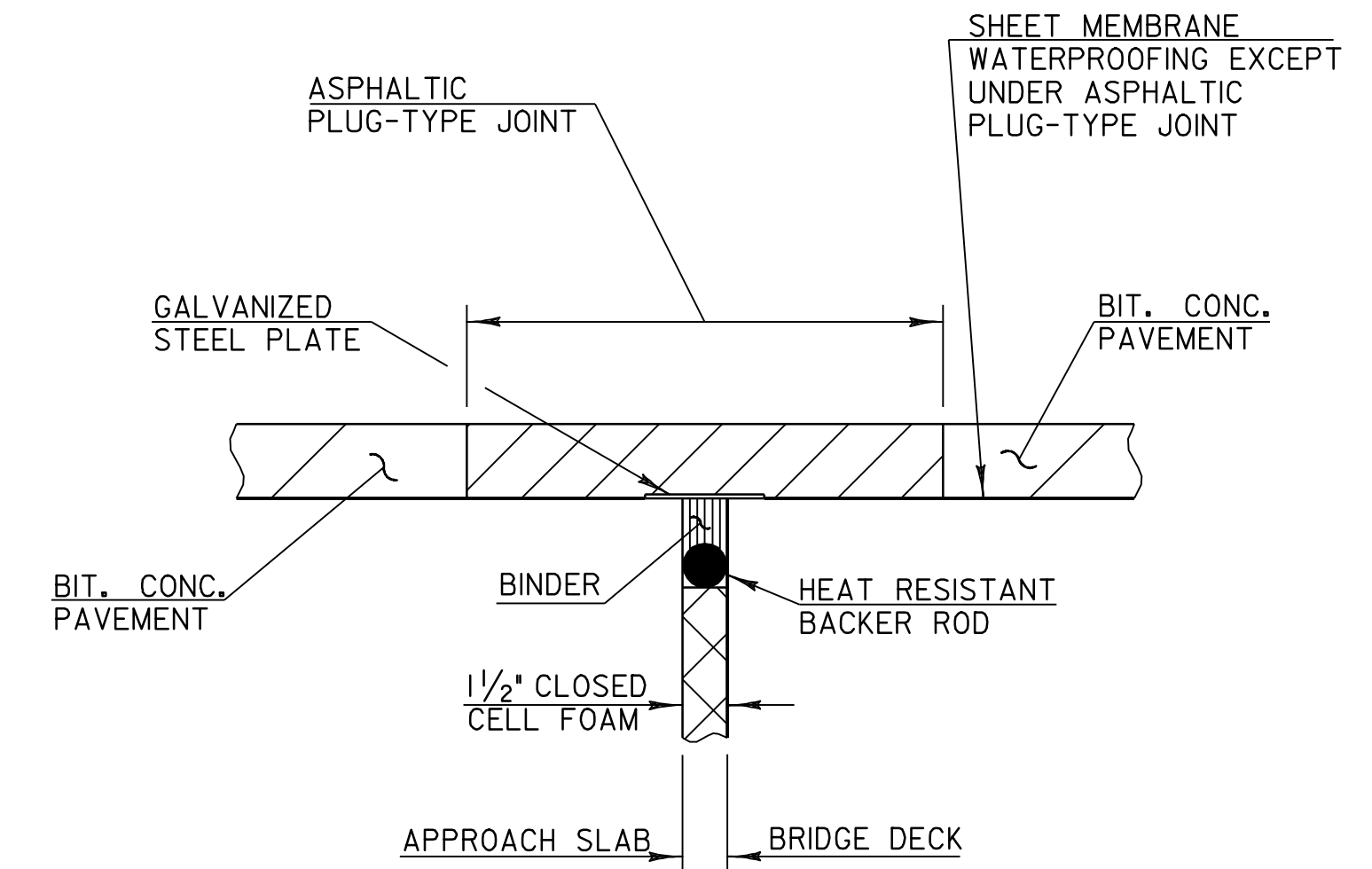


**DETAIL FOR BITUMINOUS CONCRETE CURB, TYPE A**

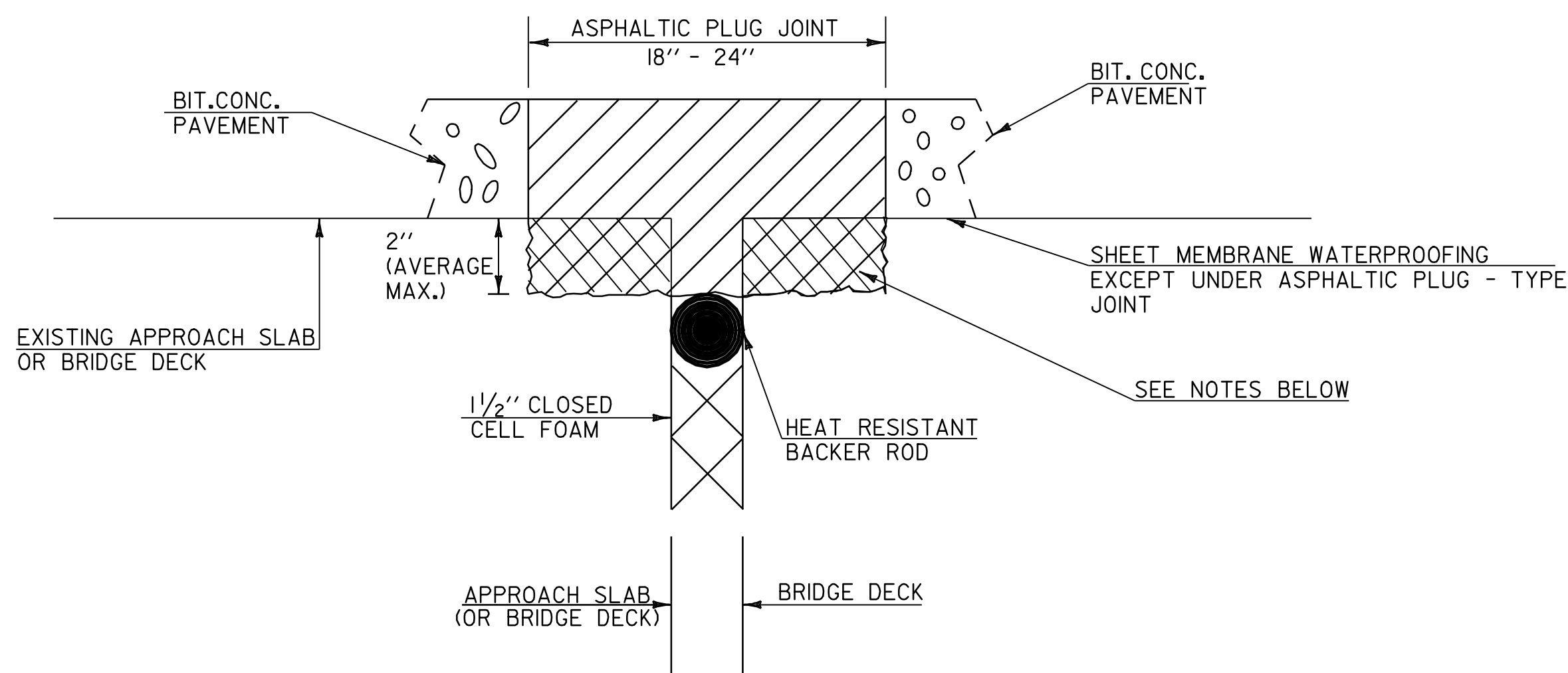


**BITUMINOUS CONCRETE GUTTER DETAIL**

EXIT 7 RAMP A STA. 5+33.75 RT - STA. 5+45.75 RT  
 EXIT 7 RAMP A STA. 5+53.30 LT - STA. 5+66.80 LT  
 EXIT 7 RAMP A STA. 8+81.25 LT - STA. 9+07.25 LT



**ASPHALTIC PLUG TYPE JOINT DETAIL**



**ASPHALTIC PLUG-TYPE JOINT DETAIL  
 REMOVAL OF UP TO 2" DETERIORATED CONCRETE**

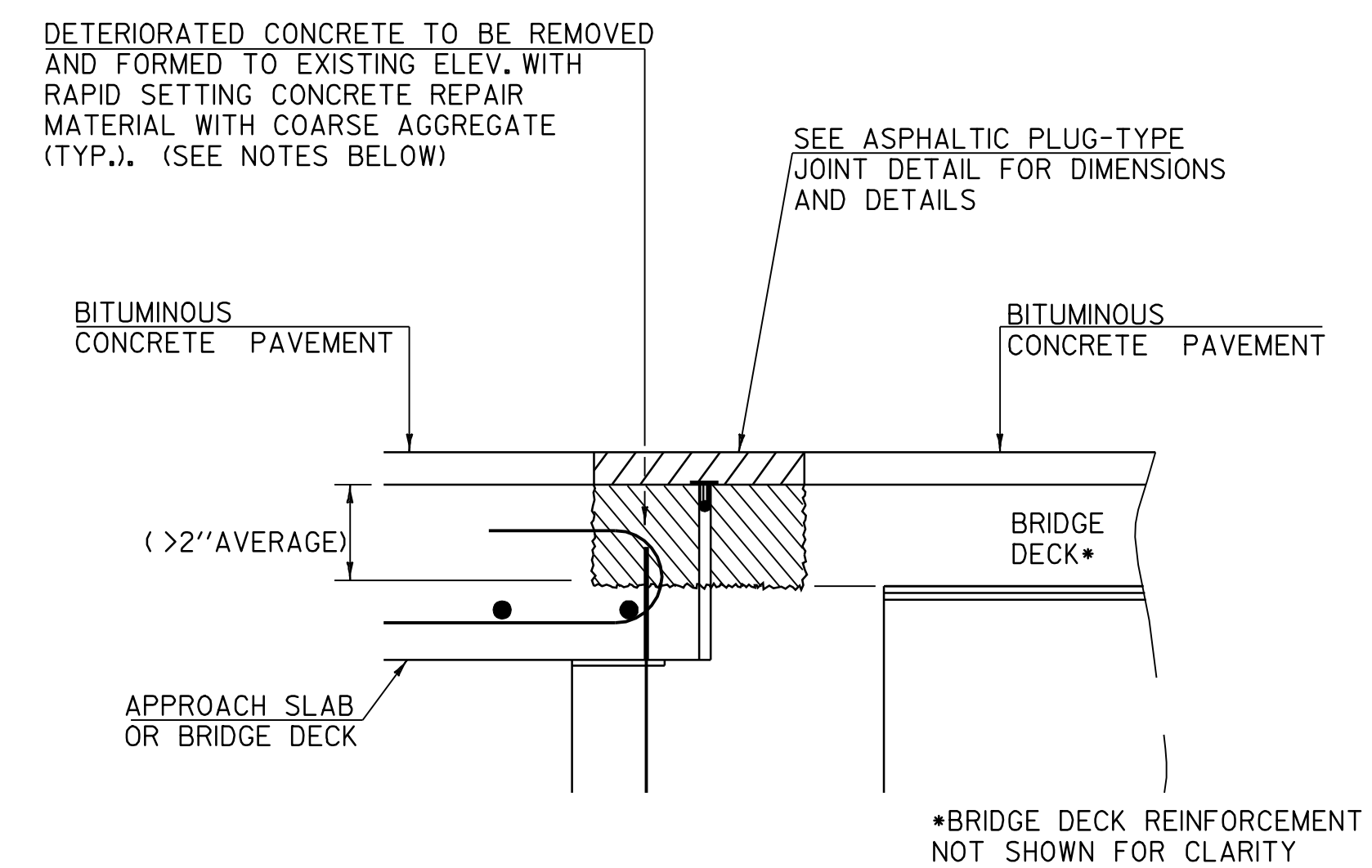
**NOTES:**

- UPON ENCOUNTERING UP TO 2" AVERAGE OF DETERIORATED CONCRETE, THE CONTRACTOR SHALL REMOVE THE DETERIORATED MATERIAL AND REPLACE IT WITH THE ASPHALTIC PLUG JOINT MATERIAL AS DIRECTED BY THE RESIDENT ENGINEER.
- REMOVAL OF THE DETERIORATED CONCRETE WILL NOT BE PAID SEPARATELY BUT WILL BE CONSIDERED INCIDENTAL TO THE UNIT BID PRICE FOR THE ITEM 516.10. THE ADDITIONAL PLUG JOINT MATERIAL BELOW THE DESIGN DEPTH TO REPLACE THE DETERIORATED CONCRETE WILL BE CONSIDERED INCIDENTAL TO THE UNIT BID PRICE FOR THE ITEM 516.10.
- THE STEEL PLATE IN THE ASPHALTIC PLUG JOINT MAY BE OMITTED ONLY IF THE REPAIRED SURFACE IS SO IRREGULAR IT WILL CAUSE VERTICAL MOVEMENT AND IT IS DIRECTED BY THE RESIDENT ENGINEER.

**ASPHALTIC PLUG LOCATIONS**

LOCATION	JOINT	LENGTH, FT
EXIT 7 RAMP A	1	24
	2	24
EXIT 7 RAMP D	1	24
	2	24
ESSEX WAY BRIDGE	1	60
	2	60

FOR LOCATION OF PLUG JOINTS, REFER TO LAYOUT SHEETS. PLACEMENT OF JOINTS TO BE CONFIRMED IN THE FIELD PRIOR TO INSTALLATION.



**ASPHALTIC PLUG-TYPE JOINT DETAIL  
 REMOVAL OF >2" DETERIORATED CONCRETE**

**NOTES:**

- UPON ENCOUNTERING GREATER THAN 2" AVERAGE OF DETERIORATED CONCRETE, THE CONTRACTOR SHALL REMOVE THE DETERIORATED MATERIAL AND REPLACE IT WITH RAPID SETTING CONCRETE REPAIR MATERIAL WITH COARSE AGGREGATE.
- REMOVAL OF THE DETERIORATED CONCRETE WILL BE INCLUDED IN THE UNIT BID PRICE FOR ITEM 580.20 "RAPID SETTING CONCRETE REPAIR MATERIAL WITH COARSE AGGREGATE".
- THE STEEL PLATE IN THE ASPHALTIC PLUG JOINT MAY BE OMITTED ONLY IF THE REPAIRED SURFACE IS SO IRREGULAR IT WILL CAUSE VERTICAL MOVEMENT AND IT IS DIRECTED BY THE RESIDENT ENGINEER.

**ALL DETAILS NOT TO SCALE**

<b>DETAIL SHEET 2</b>	PROJECT NAME: ESSEX	PLOT DATE: 23-APR-2009 15:5
	PROJECT NUMBER: NH 2403 (1)S	DRAWN BY: SJB, RHB
	FILE NAME: pave/04b032/p04b032.dgn	CHECKED BY: EPD
	DESIGNED BY: JDA	SHEET 45 OF 48