

EMBANKMENT PLANTING (SEE LANDSCAPE DETAIL & TYPICAL SHEETS)
 STA 227+50 TO 228+00 RT (2 BPO-TR, 2 FA-TR, 2 QR-TR, 4 PT-TR, 18 CS, 18 SP, & 22 CA)

PLANTING POCKET (SEE LANDSCAPE DETAIL & TYPICAL SHEETS)
 STA 228+50 TO 229+00 RT (2 BPO-TR, 2 FA-TR, 2 QR-TR, 6 VL, 6 AM, & 6 CR)

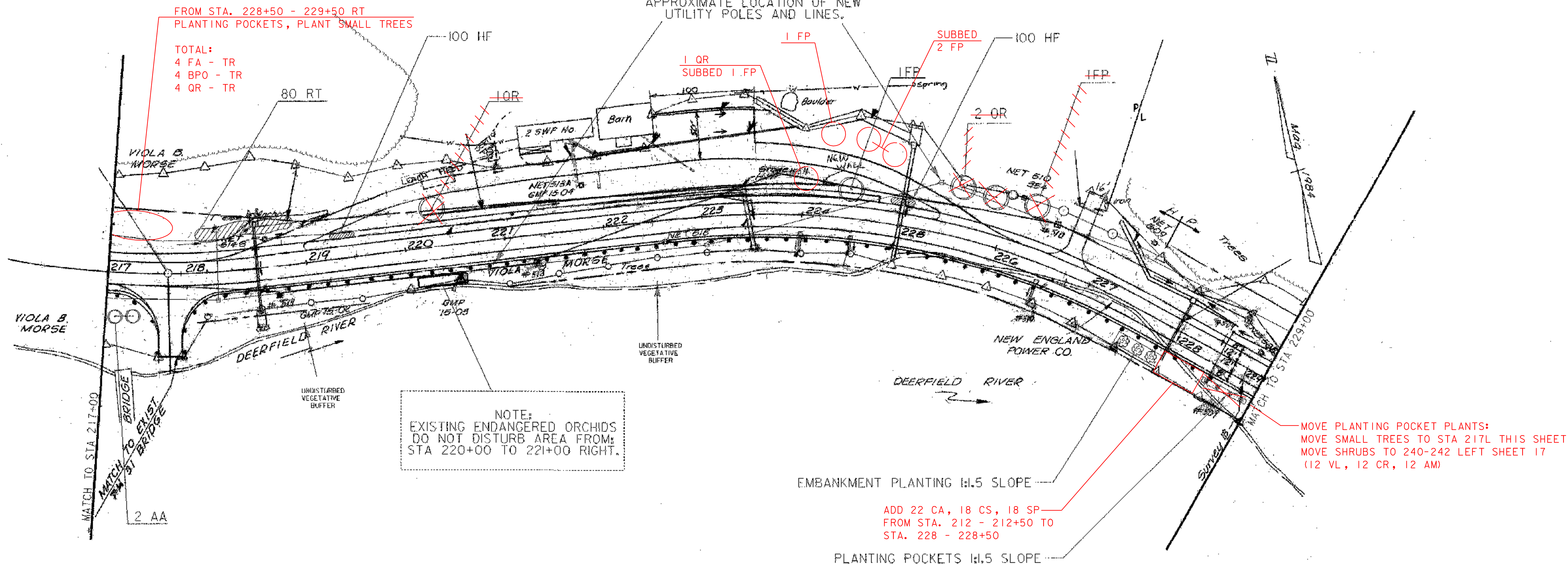
DECIDUOUS TREES-MOD (SEE LANDSCAPE DETAIL & TYPICAL SHEETS)
 STA 217+00 TO 217+25 RT (2 AA)
 STA 220+25 LT (1QR)
 STA 224+50 LT (1FP)
 STA 225+50 TO 226+00 LT (2 QR)
 STA 226+25 LT (1FP)

SHRUB BED (SEE LANDSCAPE DETAIL & TYPICAL SHEETS)
 STA 218+00 TO 219+00 LT (80 RT)

GROUND COVER (SEE LANDSCAPE DETAIL & TYPICAL SHEETS)
 **STA 219+25 TO 219+45 LT (100 HF)
 **STA 224+85 TO 225+05 LT (100 HF)
 **FINAL LOCATION TO BE DETERMINED IN THE FIELD.

NOTE: STA 219+00 TO 225+00 LEFT
 COORDINATE WITH HOMEOWNER
 FOR FINAL LOCATION.

APPROXIMATE LOCATION OF NEW
 UTILITY POLES AND LINES.



LEGEND

- TYPICAL SHRUB BED
- GROUND COVER & VINES
- EMBANKMENT PLANTING
- PLANTING POCKET
- PLANTING BED OVER GEO-GRID
- PROPOSED DECIDUOUS TREE (SMALL)
- PROPOSED DECIDUOUS TREE
- PROPOSED EVERGREEN TREE
- EDGE OF TREE LINE

*NOTE:
 1. EXTRA TOPSOIL SHALL BE USED AT
 THE DISCRETION OF THE ENGINEER.



SCALE IN FEET

FOR LANDSCAPE ONLY

| | |
|--------------------------------------|------------------------|
| SHEET NAME: PLAN VIEW SHEET | |
| PROJECT NAME: SEARSBURG-WILMINGTON | |
| PROJECT NUMBER: NHF 010-1(18) C-1 | |
| PROJECT LEADER: J. BROWN | DRAWN BY: SQUAD B |
| DESIGNED BY: J. BROWN | CHECKED BY: SQUAD B |
| FILE NAME: 78d096/desigr/landnul.dgn | PLOT DATE: 21-JAN-2004 |
| WARM FILE NAME: land10.J | SHEET 16 OF 30 |