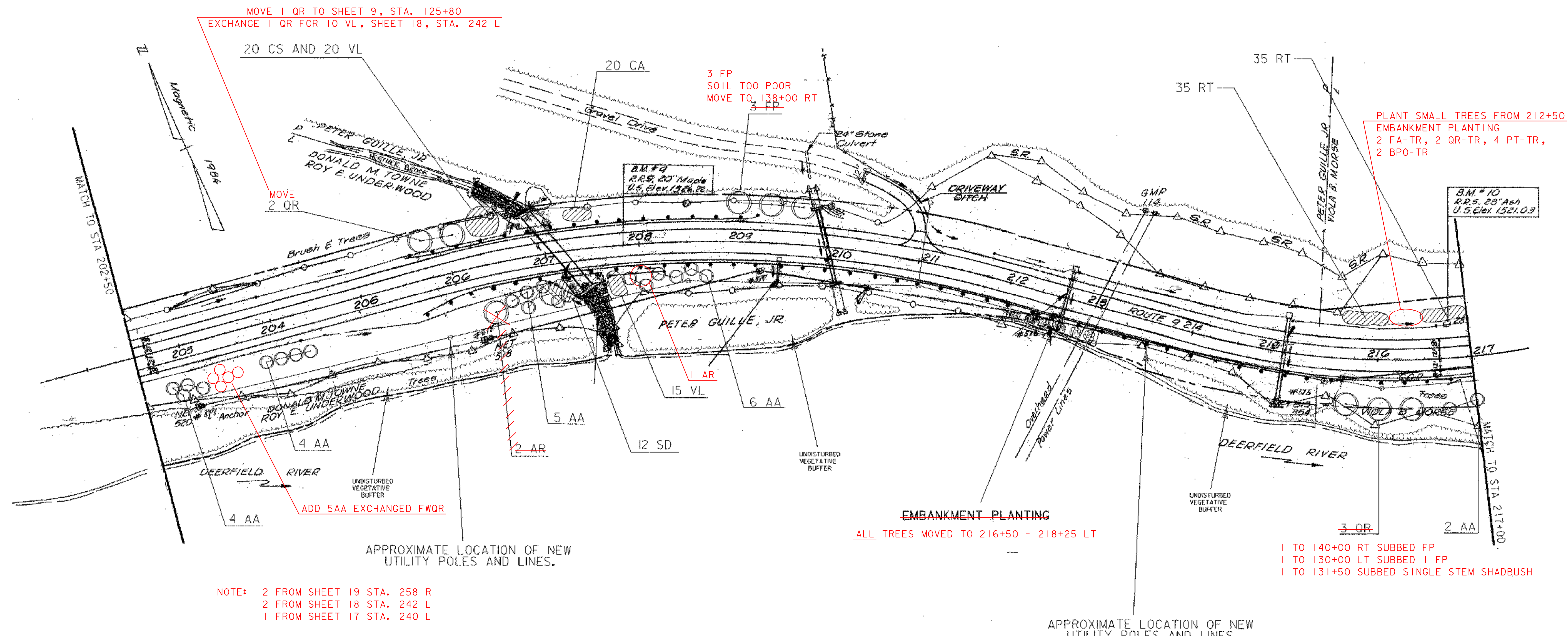


EMBANKMENT PLANTING (SEE LANDSCAPE DETAIL & TYPICAL SHEETS)
 STA 212+00 TO 213+00 RT (4 BPO-TR, 4 FA-TR, 4 QR-TR, 8 PT-TR, 36 CS, 36 SP, & 44 CA)

DECIDUOUS TREES-MOD (SEE LANDSCAPE DETAIL & TYPICAL SHEETS)
 STA 205+75 TO 206+25 LT (2 OR)
 STA 202+75 TO 203+25 RT (4 AA)
 STA 203+75 TO 204+25 RT (4 AA)
 STA 206+25 TO 207+00 RT (5 AA, 2 AR)
 STA 207+75 TO 208+75 RT (6 AA)
 STA 215+75 TO 216+25 RT (3 QR)
 **STA 216+75 TO 217+00 RT (2 AA)
 **PLANT AT TOE OF SLOPE.

SHRUB BED (SEE LANDSCAPE DETAIL & TYPICAL SHEETS)
 STA 206+25 TO 206+50 LT (20 CS, 20 VL)
 STA 207+25 TO 207+50 LT (20 CA)
 STA 215+50 TO 216+00 LT (35 RT)
 STA 216+50 TO 217+00 LT (35 RT)
 STA 207+00 TO 207+25 RT (12 SD)
 STA 207+55 TO 207+75 RT (15 VL)



NOTE: 2 FROM SHEET 19 STA. 258 R
 2 FROM SHEET 18 STA. 242 L
 1 FROM SHEET 17 STA. 240 L

- LEGEND**
- TYPICAL SHRUB BED
 - GROUND COVER & VINES
 - EMBANKMENT PLANTING
 - PLANTING POCKET
 - PLANTING BED OVER GEO-GRID
 - PROPOSED DECIDUOUS TREE (SMALL)
 - PROPOSED DECIDUOUS TREE
 - PROPOSED EVERGREEN TREE
 - EDGE OF TREE LINE

*NOTE:
 1. EXTRA TOPSOIL SHALL BE USED AT THE DISCRETION OF THE ENGINEER.



FOR LANDSCAPE ONLY

| | |
|------------------|---------------------------|
| SHEET NAME: | PLAN VIEW SHEET |
| PROJECT NAME: | SEARSBURG-WILMINGTON |
| PROJECT NUMBER: | NHF 010-1(18) C-1 |
| PROJECT LEADER: | J. BROWN |
| DESIGNED BY: | J. BROWN |
| FILE NAME: | 78d096/design/landnul.dgn |
| IPARM FILE NAME: | land09.t |
| DRAWN BY: | SQUAD B |
| CHECKED BY: | SQUAD B |
| PLOT DATE: | 21-JAN-2004 |
| SHEET | 15 OF 30 |