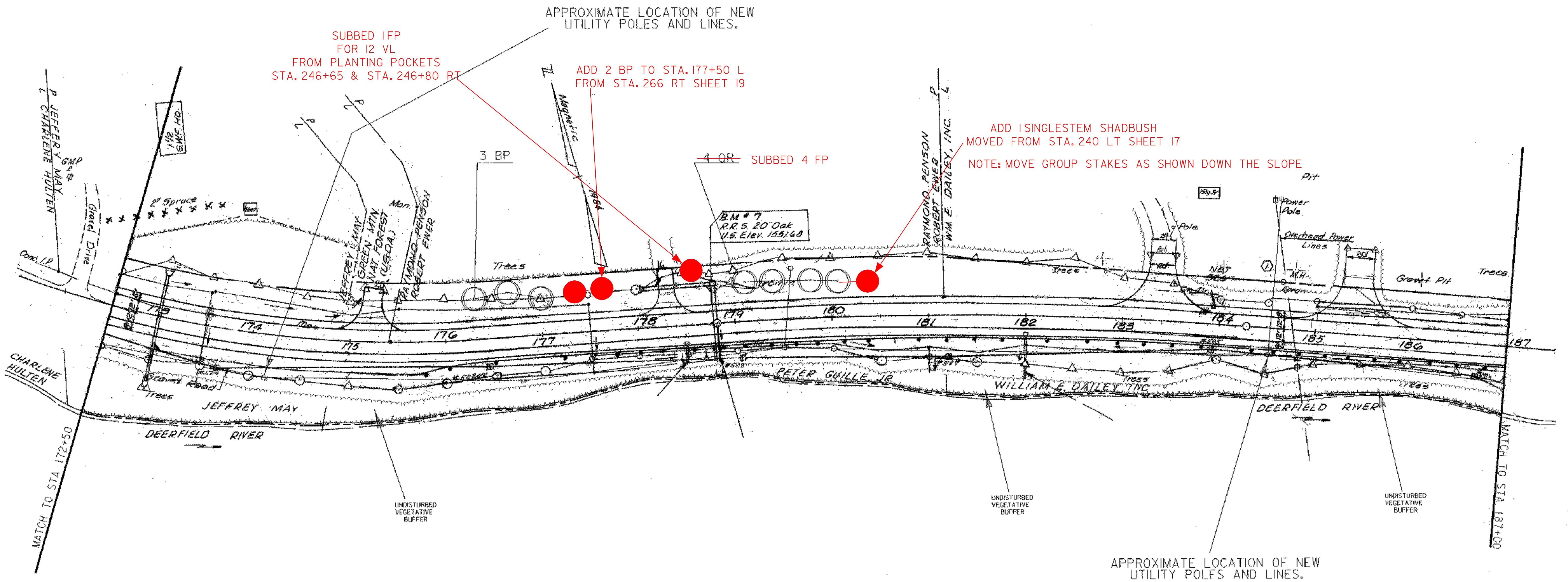


DECIDUOUS TREES-MOD (SEE LANDSCAPE DETAIL & TYPICAL SHEETS)

STA 176+25 TO 177+00 LT (3 BP)
 **STA 179+00 TO 180+00 LT (4 OR)
 **LOCATE 42' FROM CENTERLINE AT EDGE OF 1:4 SLOPE.



SUBBED 1FP
 FOR 12 VL
 FROM PLANTING POCKETS
 STA. 246+65 & STA. 246+80 RT

APPROXIMATE LOCATION OF NEW
 UTILITY POLES AND LINES.

ADD 2 BP TO STA. 177+50 L
 FROM STA. 266 RT SHEET 19

4 OR SUBBED 4 FP

ADD 1 SINGLESTEM SHADBUSH
 MOVED FROM STA. 240 LT SHEET 17

NOTE: MOVE GROUP STAKES AS SHOWN DOWN THE SLOPE

APPROXIMATE LOCATION OF NEW
 UTILITY POLES AND LINES.

LEGEND

- TYPICAL SHRUB BED
- GROUND COVER & VINES
- EMBANKMENT PLANTING
- PLANTING POCKET
- PLANTING BED OVER GEO-GRID
- PROPOSED DECIDUOUS TREE (SMALL)
- PROPOSED DECIDUOUS TREE
- PROPOSED EVERGREEN TREE
- EDGE OF TREE LINE

*NOTE:
 1. EXTRA TOPSOIL SHALL BE USED AT
 THE DISCRETION OF THE ENGINEER.



FOR LANDSCAPE ONLY

SHEET NAME:	PLAN VIEW SHEET		
PROJECT NAME:	SEARSBURG-WILMINGTON		
PROJECT NUMBER:	NH 010-K(18) C-1		
PROJECT LEADER:	J. BROWN	DRAWN BY:	SQUAD B
DESIGNED BY:	J. BROWN	CHECKED BY:	SQUAD B
FILE NAME:	78d096/design/landrnl.dgn	PLOT DATE:	21-JAN-2004
IPARM FILE NAME:	land07.t	SHEET	13 OF 30