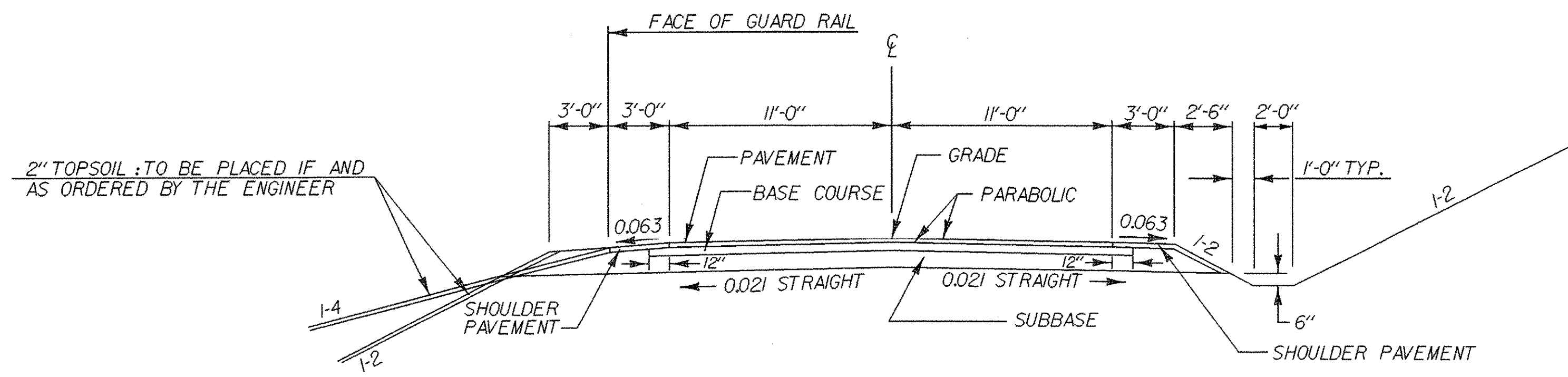
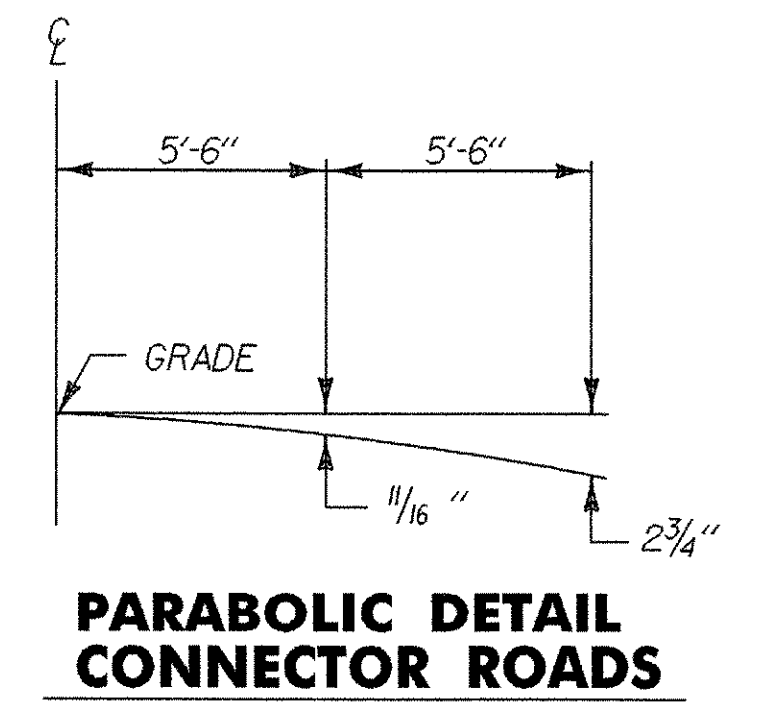


VT. ROUTE 9 SIDEROAD TYPICAL SECTIONS

MATERIAL ITEM	THICKNESS TOLERANCE
PAVEMENT	± 1/4"
SUBBASE	± 1"
SAND BORROW	± 1"

1 3/4" BITUMINOUS CONCRETE PAVEMENT, TYPE IIIS (PG 58-28)
 3/2" BASE COURSE OF BITUMINOUS CONCRETE PAVEMENT, TYPE IS (PG 58-28)
 18" SUBBASE OF DENSE GRADED CRUSHED STONE
 SHOULDERS : 1 3/4" BITUMINOUS CONCRETE PAVEMENT, TYPE IIIS (PG 58-28)
 0" - 24" SAND BORROW (IN CUTS): TO BE PLACED AS NOTED ON THE PLANS OR AS DIRECTED BY THE ENGINEER

NOTES:
 1. MAXIMUM BANK OF EAST CONNECTOR IS 0.040 FT/FT
 2. REFER TO STANDARD SHEET A-61

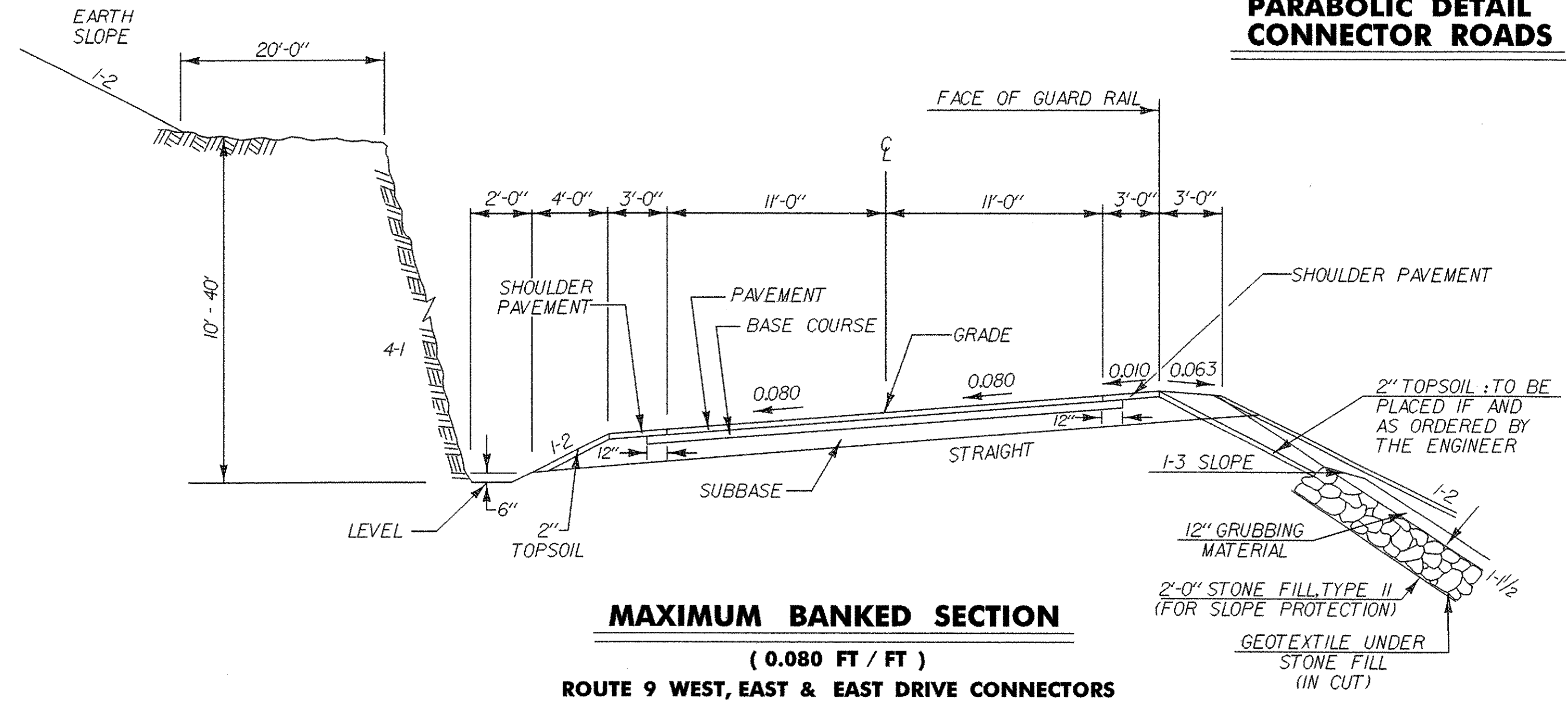


NORMAL SECTION

ROUTE 9 WEST, EAST, & EAST DRIVE CONNECTORS

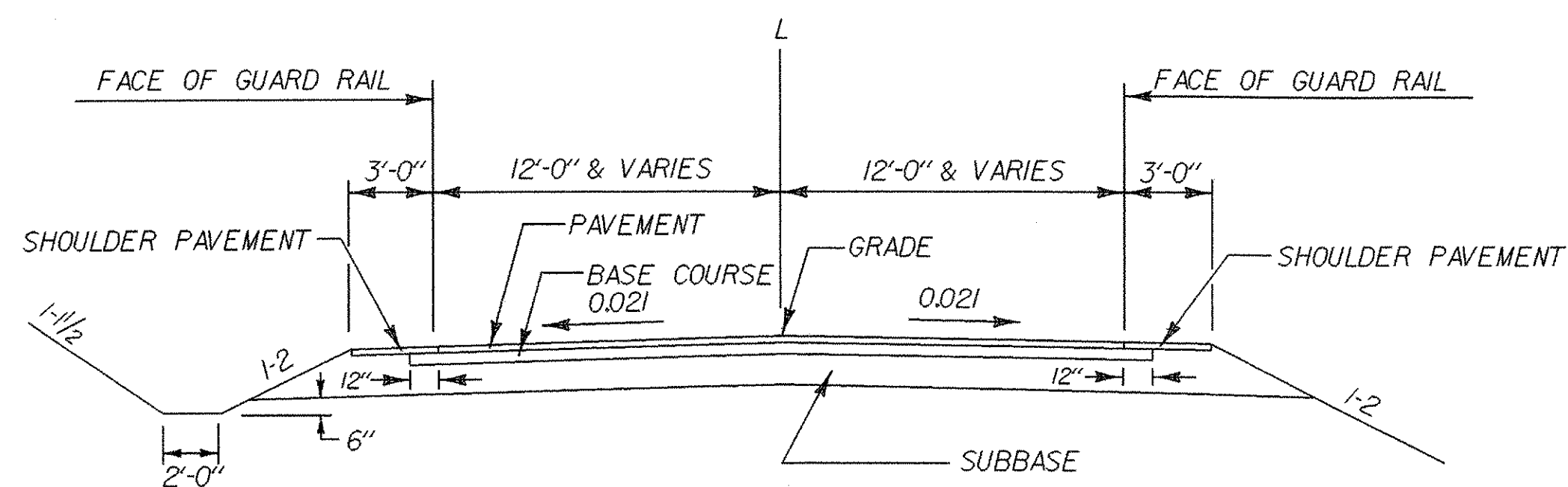
OVERLAY (22' WIDE)

1 3/4" BITUMINOUS CONCRETE PAVEMENT, TYPE IIIS (PG 58-28)
 LOCATIONS: FROM WEST CONNECTOR 24+00 TO CUL-DE-SAC 71+26
 FROM EAST CONNECTOR 13+00 TO EAST DRIVE CONNECTOR 21+70



MAXIMUM BANKED SECTION

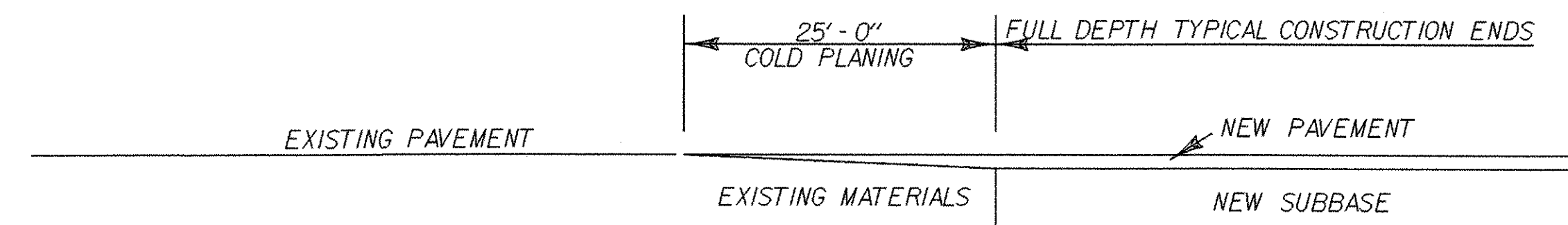
(0.080 FT / FT)
 ROUTE 9 WEST, EAST & EAST DRIVE CONNECTORS



TOWN HIGHWAY 31

COLD PLANING LIMITS AT APPROACHES

INCLUDES SHOULDERS



FOR REFERENCE ONLY

SHEET NAME: VT.RT. 9 SIDE ROAD TYPICAL SECTIONS	
PROJECT NAME: SEARSBURG-WILMINGTON	
PROJECT NUMBER: NHF 010-1(18) C-1	
PROJECT LEADER: J. BROWN	DRAWN BY: SOAUD B
DESIGNED BY: J. BROWN	CHECKED BY: SOAUD B
FILE NAME: 78d096/design/landtyp	PLOT DATE: 21-JAN-2004
IPARM FILE NAME: landtyp02.i	SHEET 3 OF 30

NOT TO SCALE