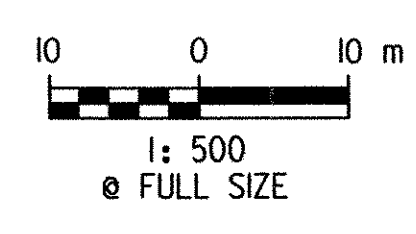


NOTE:
 1. PRECISE LOCATION OF WOODY PLANTINGS IN STREAMBANK RESTORATION AREA (STA 14+080 TO 14+200) TO BE DETERMINED IN THE FIELD AS DIRECTED BY THE RESIDENT ENGINEER IN CONSULTATION WITH VAOT'S FIELD NATURALIST AT THE TIME OF PLANTING, AND IN RESPONSE TO THE ACTUAL FIELD CONDITIONS AT THAT TIME.
 2. STREAMBANK RESTORATION SEEDING WILL OCCUR AS NEEDED TO STABILIZE AREAS CURRENTLY UNDER CONSTRUCTION.

LEGEND

AMC.01(9)	DECIDUOUS SHRUB GROUPING WITH PLANT TYPE AND QUANTITY
AR.01(3)	DECIDUOUS TREE GROUPING WITH PLANT TYPE AND QUANTITY
AC.01(4)	EVERGREEN TREE GROUPING WITH PLANT TYPE AND QUANTITY
[Symbol]	WILDFLOWER MIX - PLANTED BY VAOT
[Symbol]	NORTHEAST WETLAND GRASS SEED MIX/ STREAMBANK RESTORATION AREA
[Symbol]	EXISTING DECIDUOUS TREE
[Symbol]	EXISTING EVERGREEN TREE
[Symbol]	TOE OF SLOPE
[Symbol]	LIMIT OF CUT
[Symbol]	PROPERTY LINE
[Symbol]	R.O.W.
[Symbol]	R.O.W. FENCE



DATUM

VERTICAL	NAVD 88
HORIZONTAL	NAD 83 (1992)

LANDSCAPE PLAN

CONTRACT PLANS

SURVEYED BY	C.H.A. & V.S.E.	DATE	12/93
DESIGNED BY	J.A.S./C.W.B.	DATE	01/04
DRAWN BY	K.R.K.	DATE	2/26/04
CHECKED BY	J.A.S.	DATE	2/26/04
DESIGN FILE NO.	R13464-PROJECT.dgn		
PROJ. NAME	BENNINGTON - HOOSICK D.P.I. 0146(1)C/7		
DWG. NO. L4	SHEET 5 OF 13		