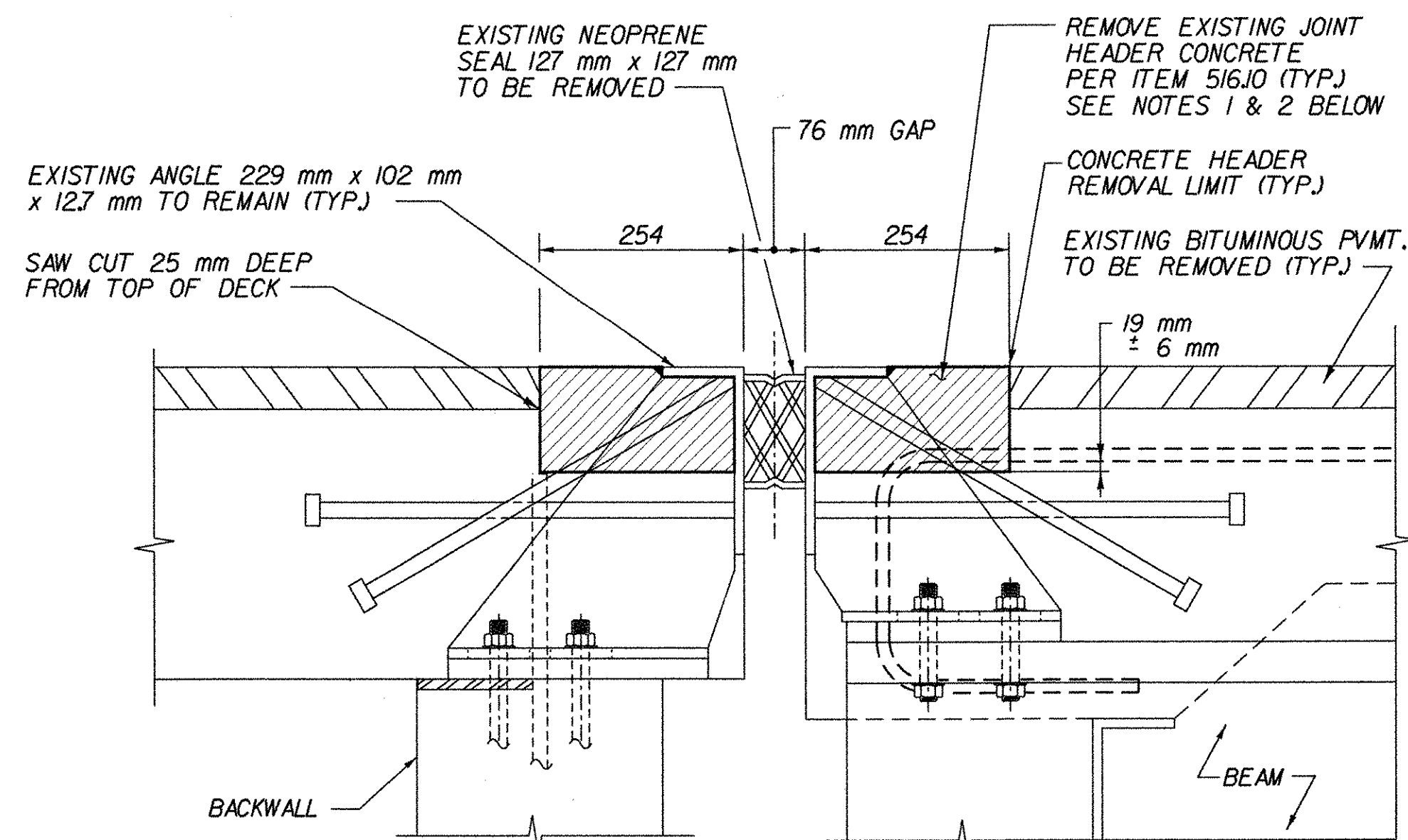
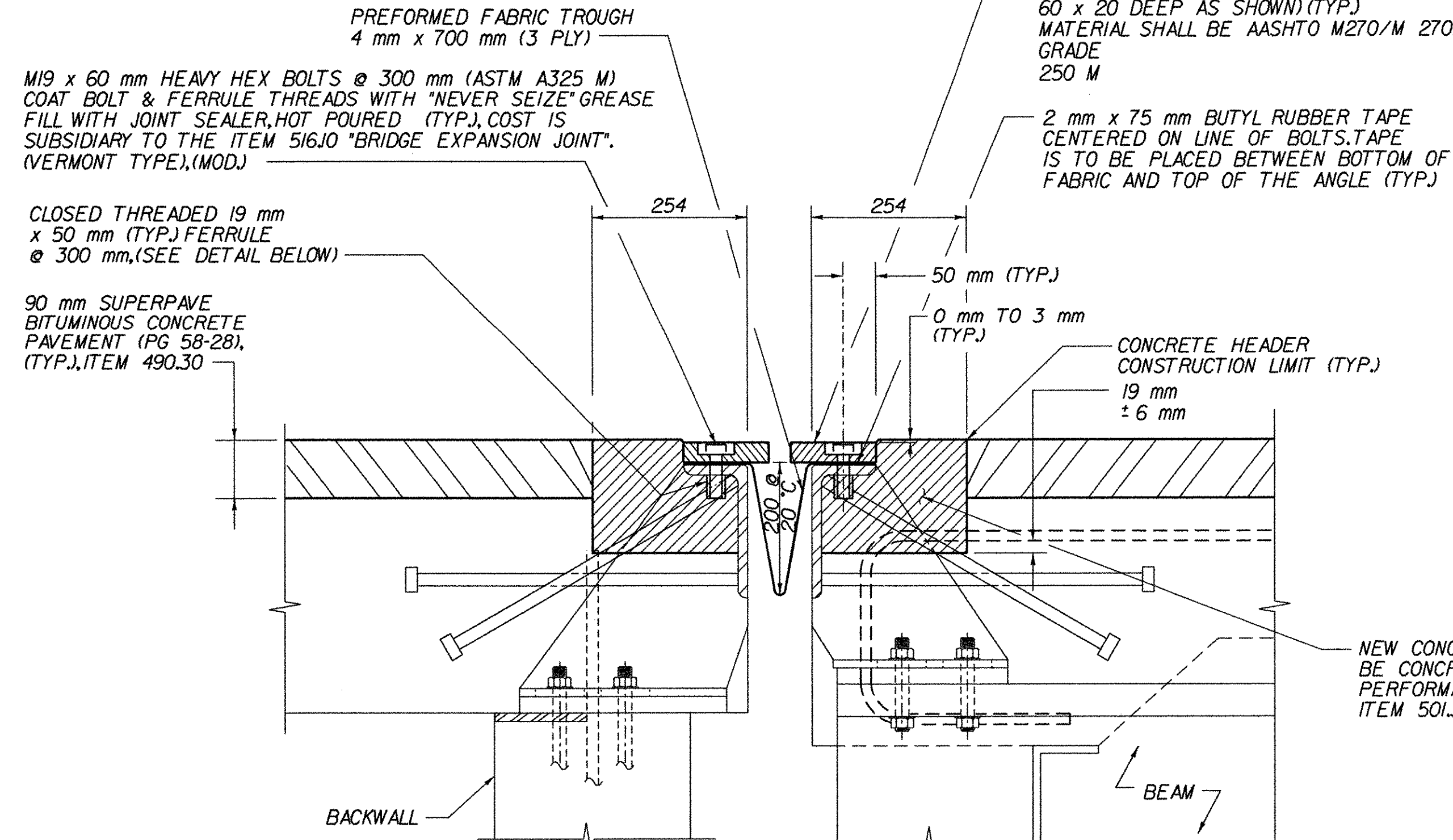


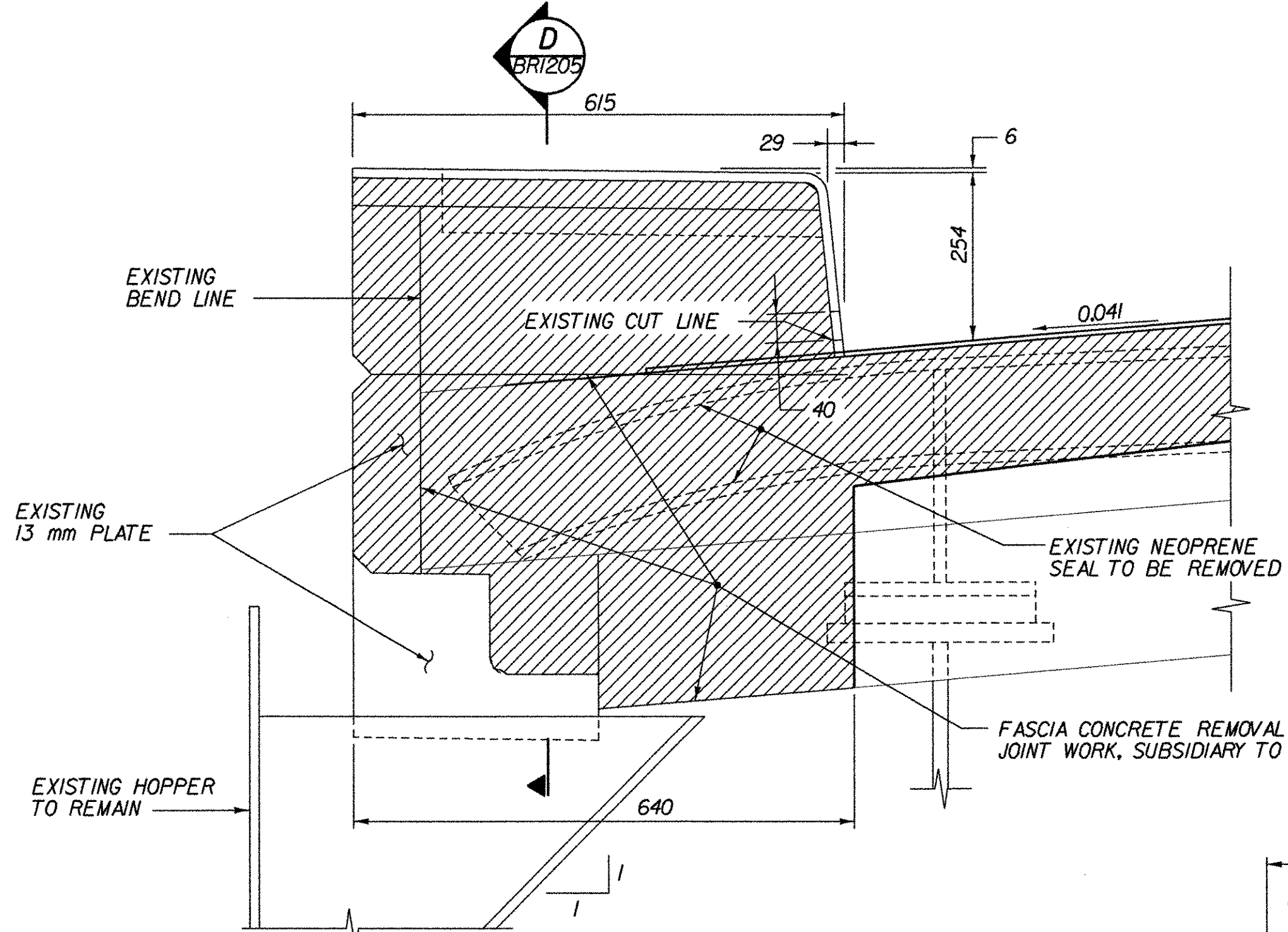
NOTE: UNLESS NOTED OTHERWISE, ALL STATIONS ARE IN KILOMETERS, ALL ELEVATIONS ARE IN METERS, AND ALL DIMENSIONS ARE IN MILLIMETERS.



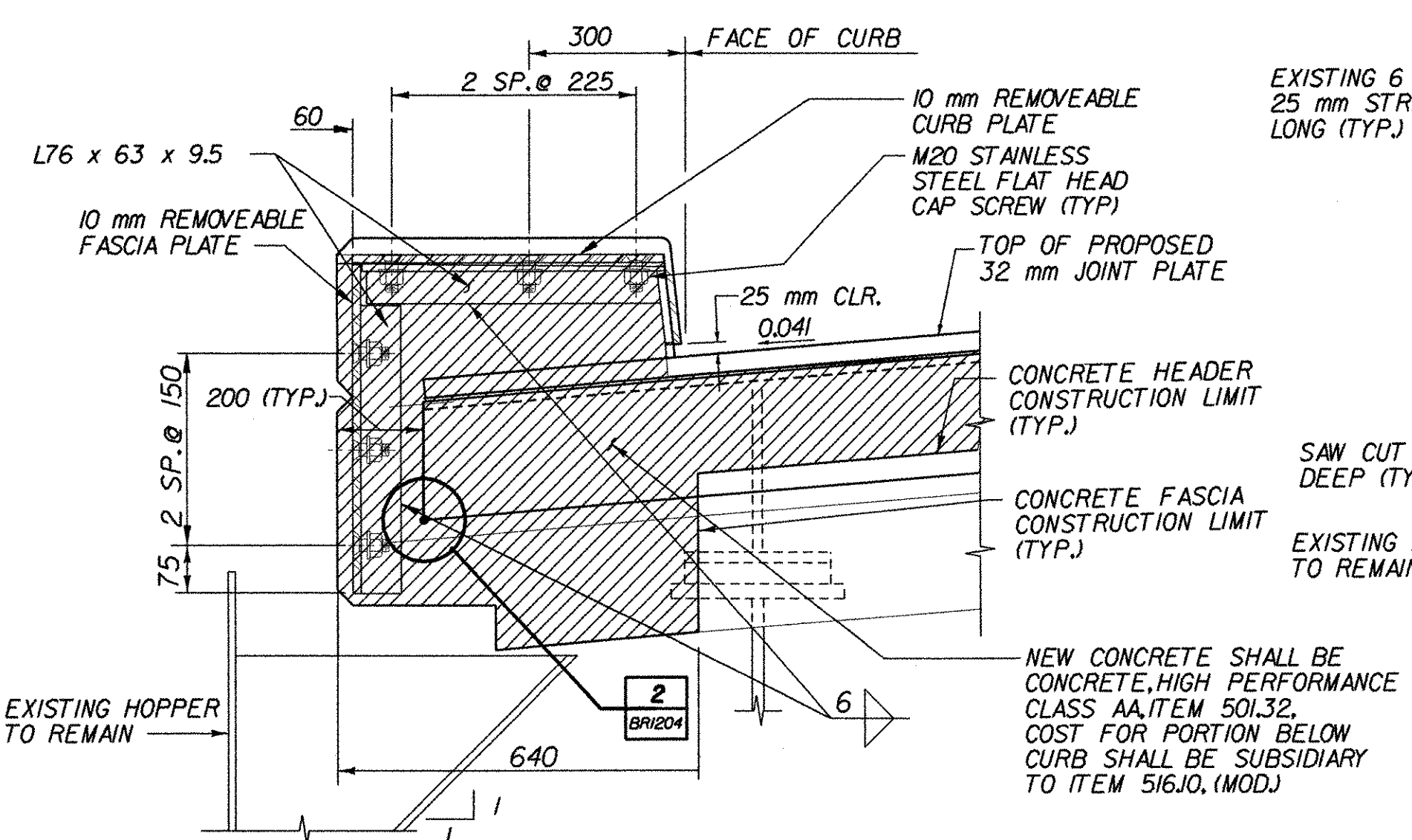
B EXISTING SECTION
BRI204 N.T.S.



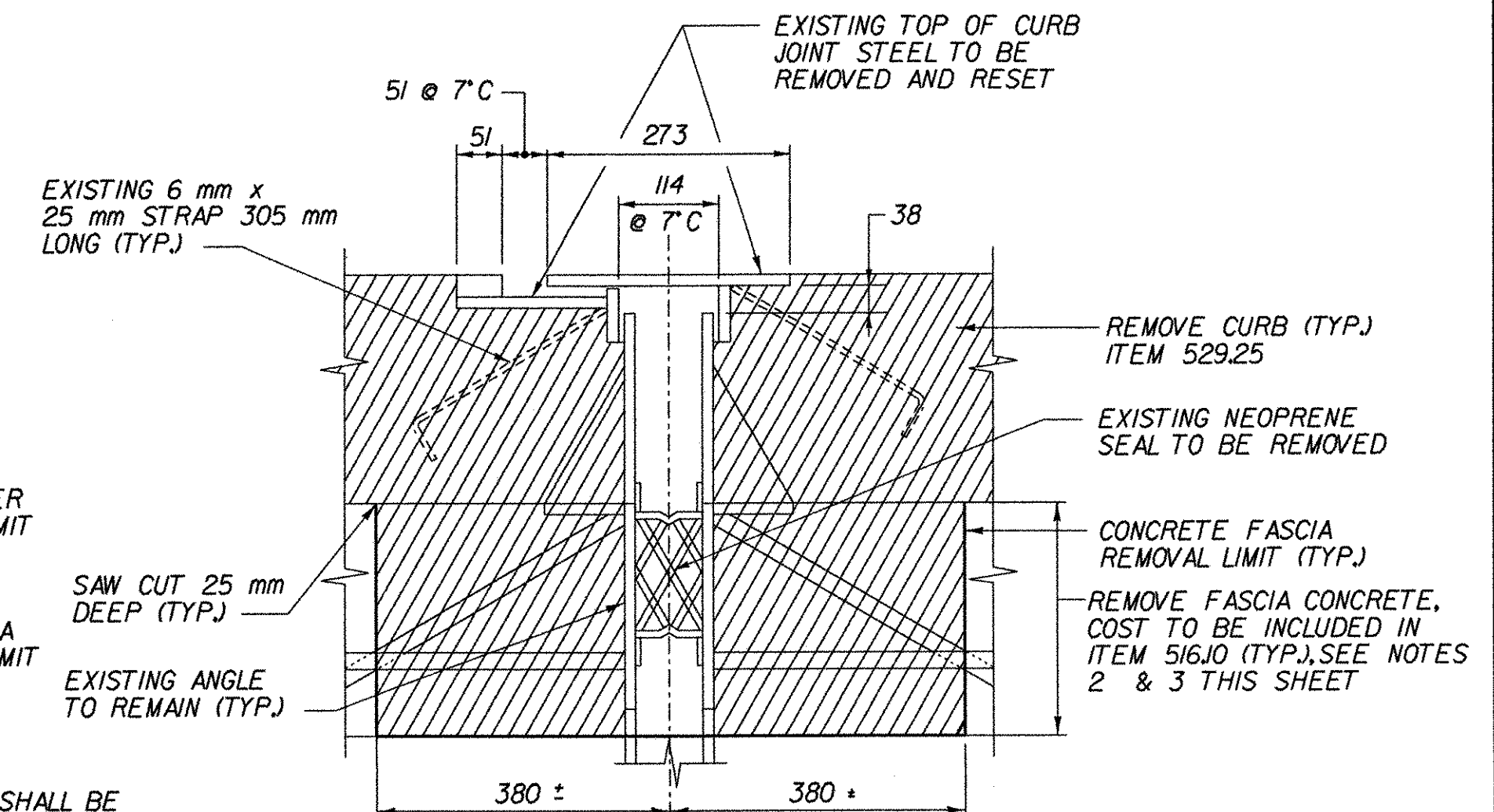
B PROPOSED SECTION
BRI204 N.T.S.



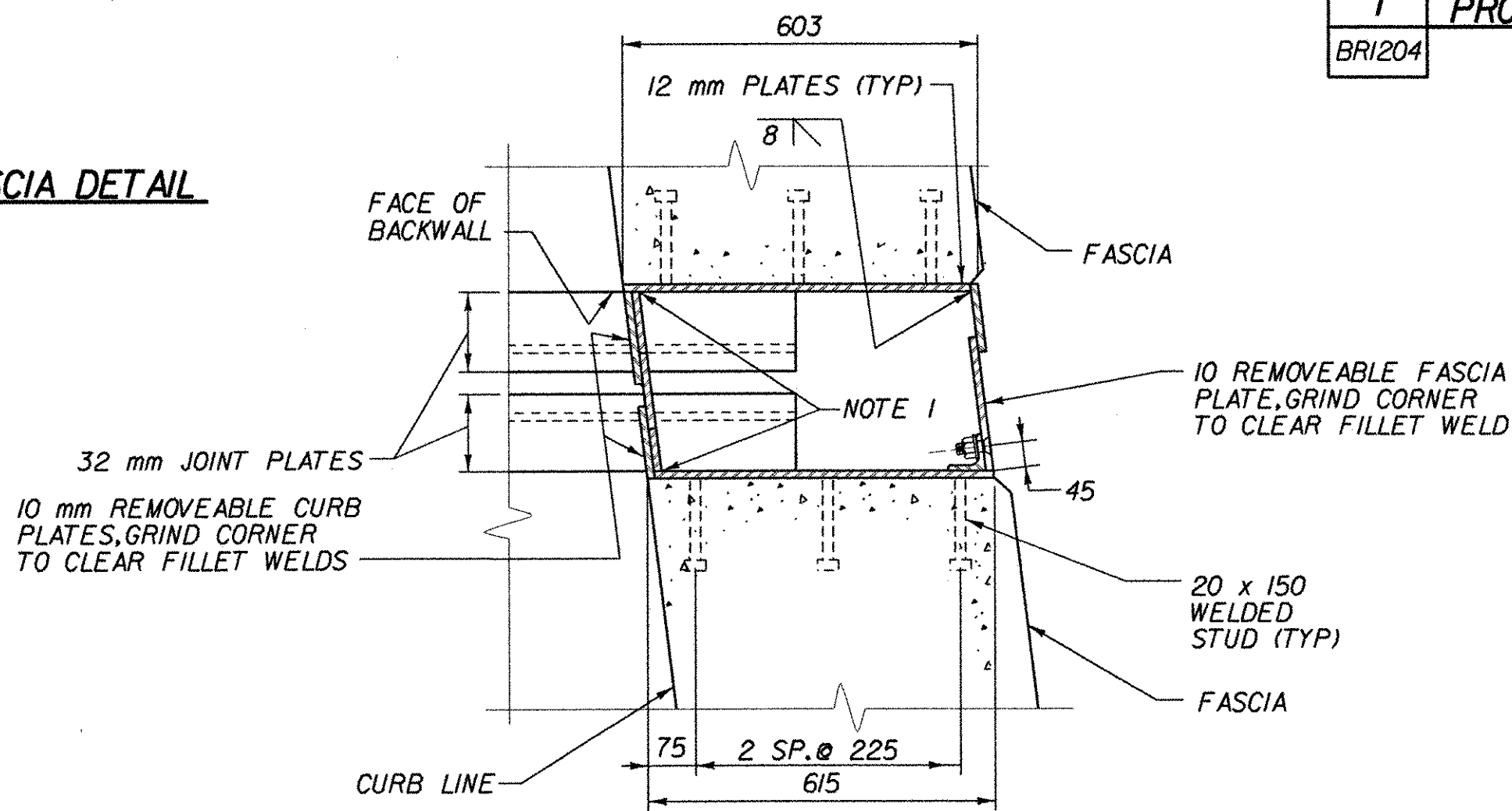
D EXISTING JOINT SECTION AT CURB
BRI205 N.T.S.



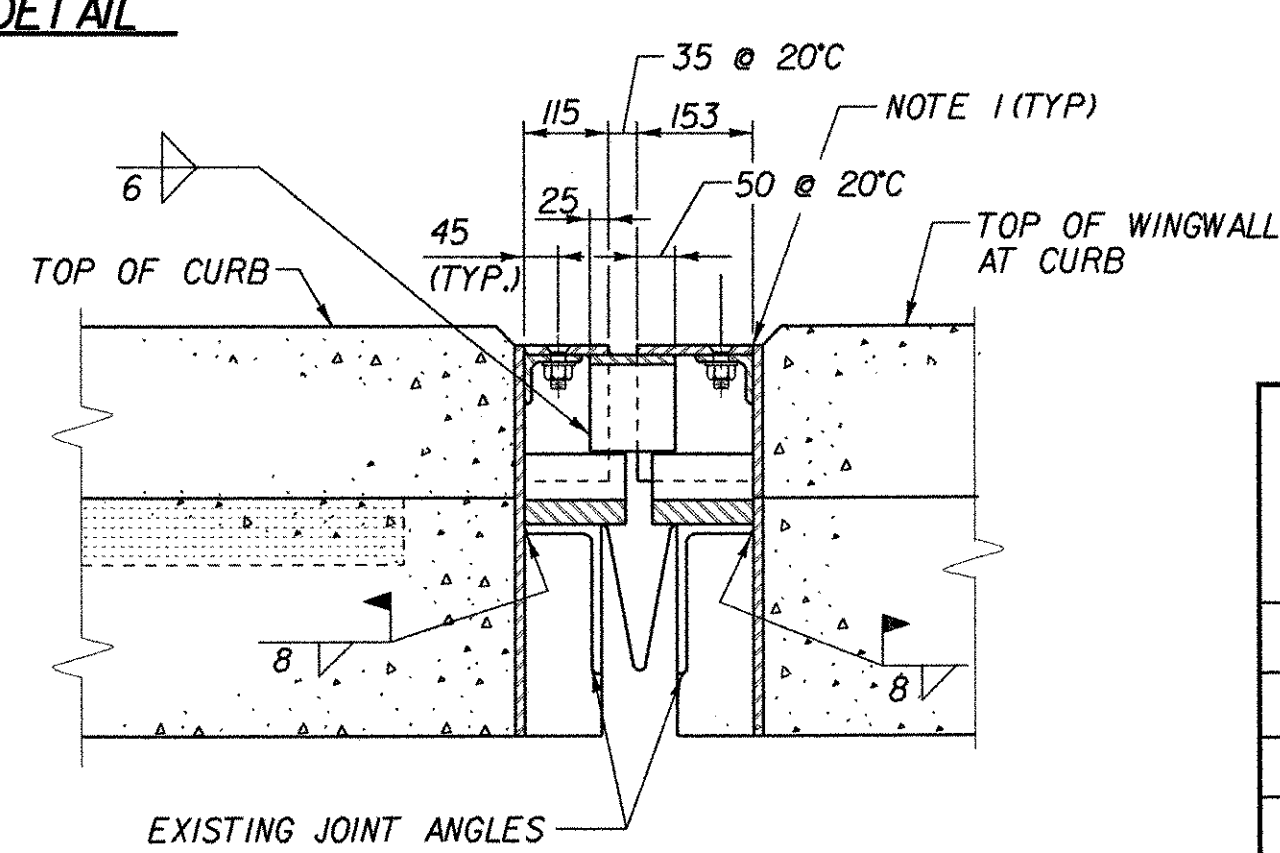
I PROPOSED FASCIA DETAIL
BRI204 N.T.S.



I EXISTING FASCIA DETAIL
BRI204 N.T.S.



E PROPOSED PARTIAL JOINT PLAN
BRI204 N.T.S.



F PROPOSED JOINT SECTION AT CURB
BRI204 N.T.S.

- NOTES:**
1. SEAL JOINTS BETWEEN PLATES WITH SILICONE SEALANT, COST TO BE INCLUDED IN ITEM 516JO, (MOD).
 2. CONTRACTOR SHALL USE CARE NOT TO DAMAGE THE EXISTING JOINT COMPONENTS DURING CONCRETE HEADER REMOVAL OPERATIONS.
 3. THE MAXIMUM SIZE AIR HAMMER USED TO REMOVE JOINT HEADER CONCRETE SHALL BE 7 kg.

**STATE OF VERMONT
AGENCY OF TRANSPORTATION**

Town of	BENNINGTON	Bridge No.	BRI200
Highway No.	VT. RTE. 279	Log Sta.	
		Surv. Sta.	17+853
VT. RTE. 279 OVER HISTORIC VT. ROUTE 7A			
JOINT DETAILS			
Designed By	D. STECIAK	Drawn by	K. RAPELLO/B. WEATHERBY
Checked By	M. W. OLSTAD	Date	02/04
		Bridge Design Supervisor	M. W. OLSTAD
		Date	02/04
PROJECT	BENNINGTON-HOOSICK	PROJECT NO.	D.P.I. 0146(1) C/6
I.G.C. Info.			
Bridge Sheet No.	BRI205	Sheet	80 OF 83

FILE NAME = u:\12502\WSTN\FINAL\7a\brg\jntsh2.plt
DATE/TIME = 2/17/2004
USER = 2225