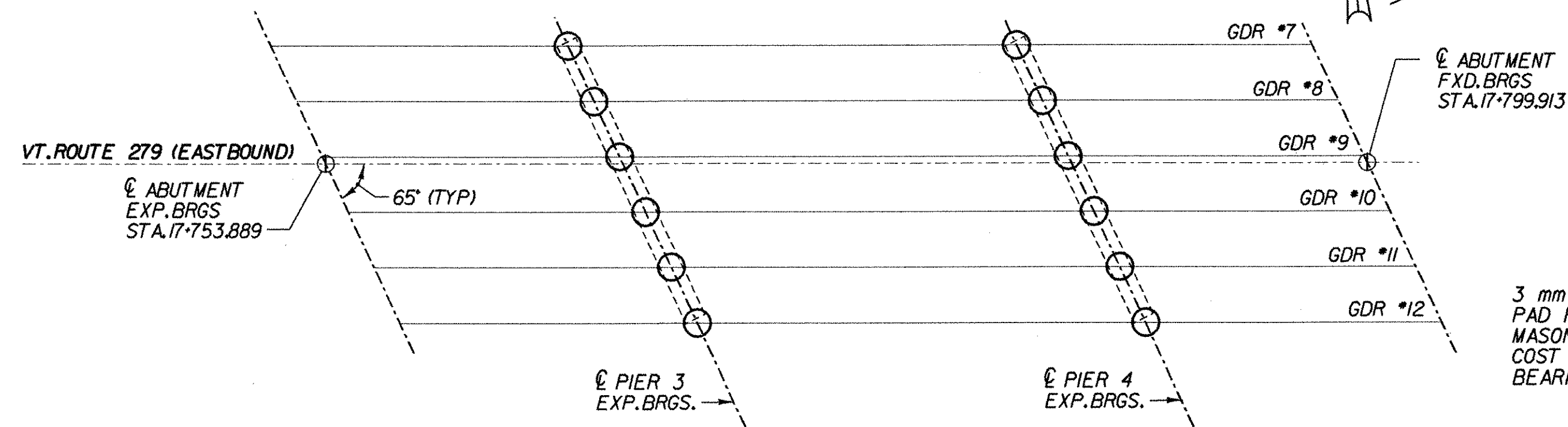
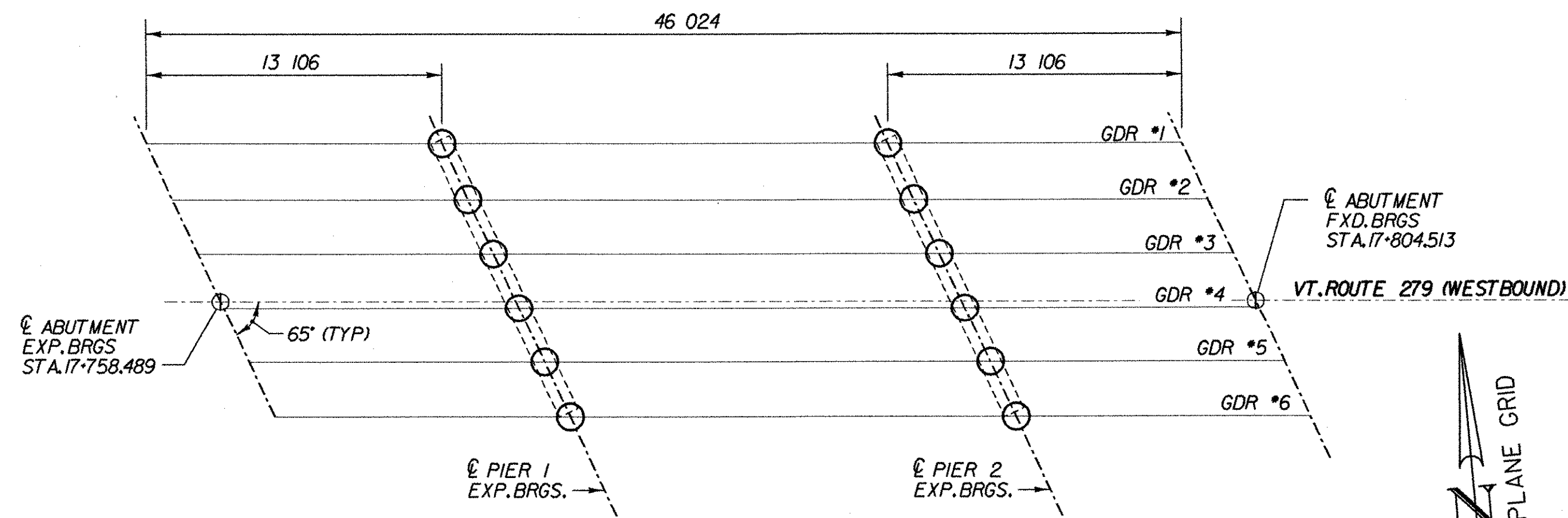
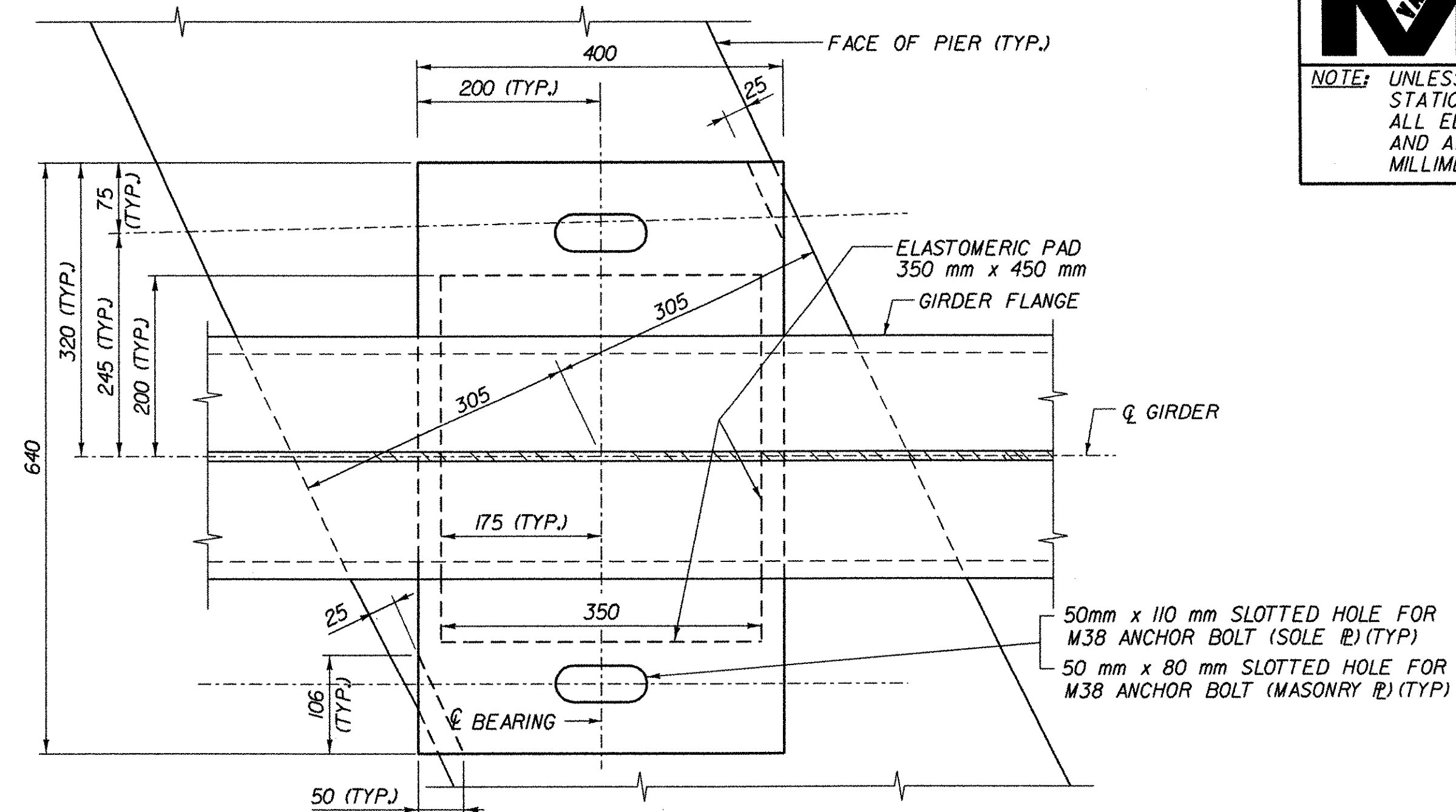


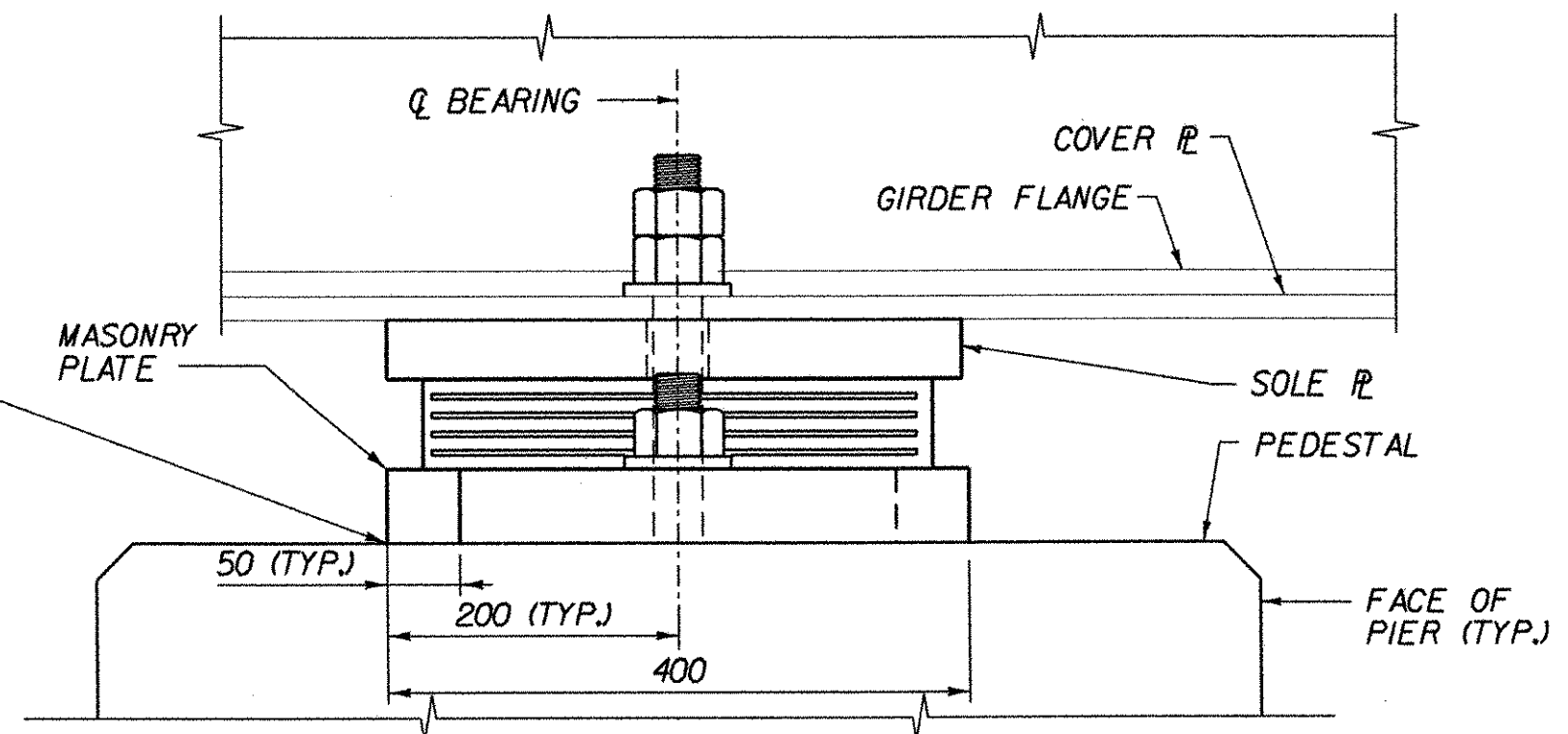
NOTE: UNLESS NOTED OTHERWISE, ALL STATIONS ARE IN KILOMETERS, ALL ELEVATIONS ARE IN METERS, AND ALL DIMENSIONS ARE IN MILLIMETERS.



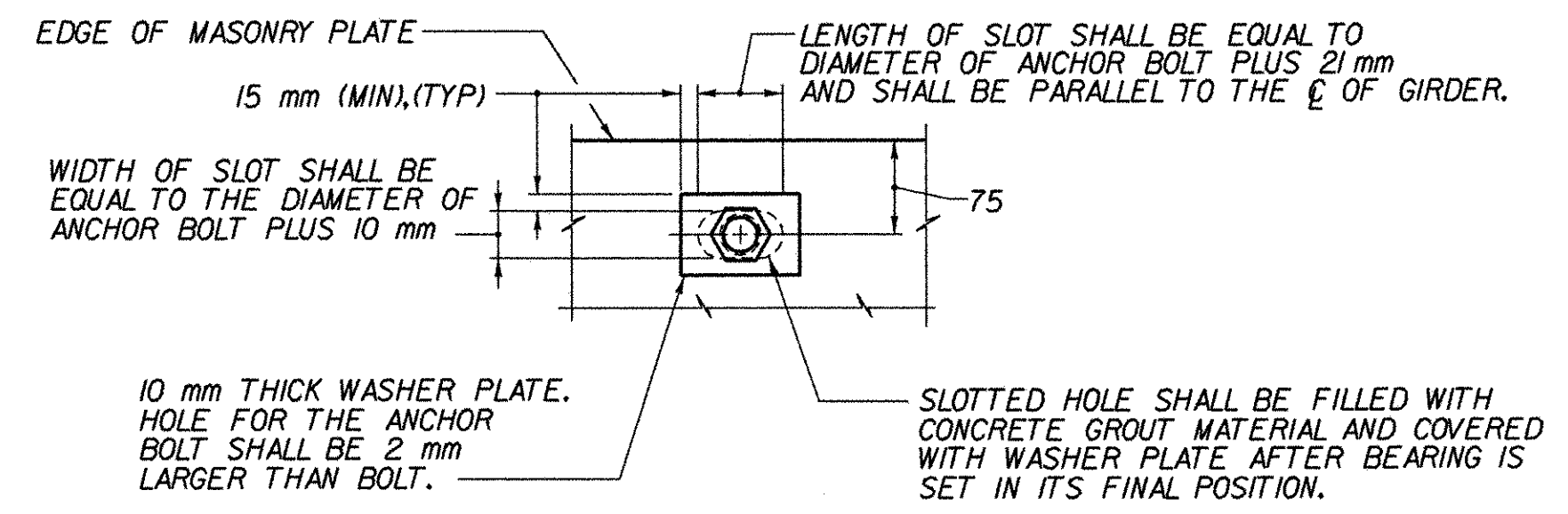
LEGEND
 ○ - LOCATION OF BEARING REPLACEMENT AND PEDESTAL WORK



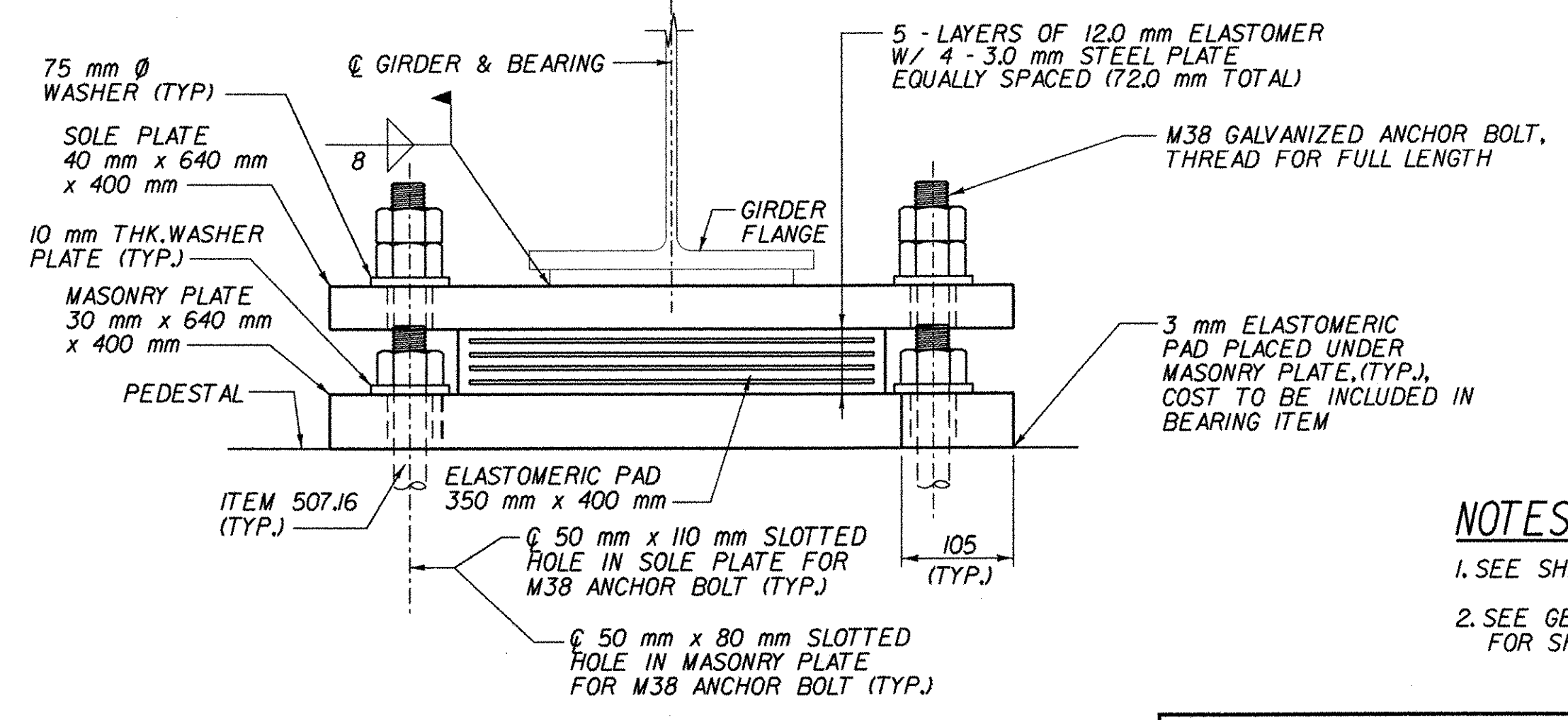
PLAN VIEW



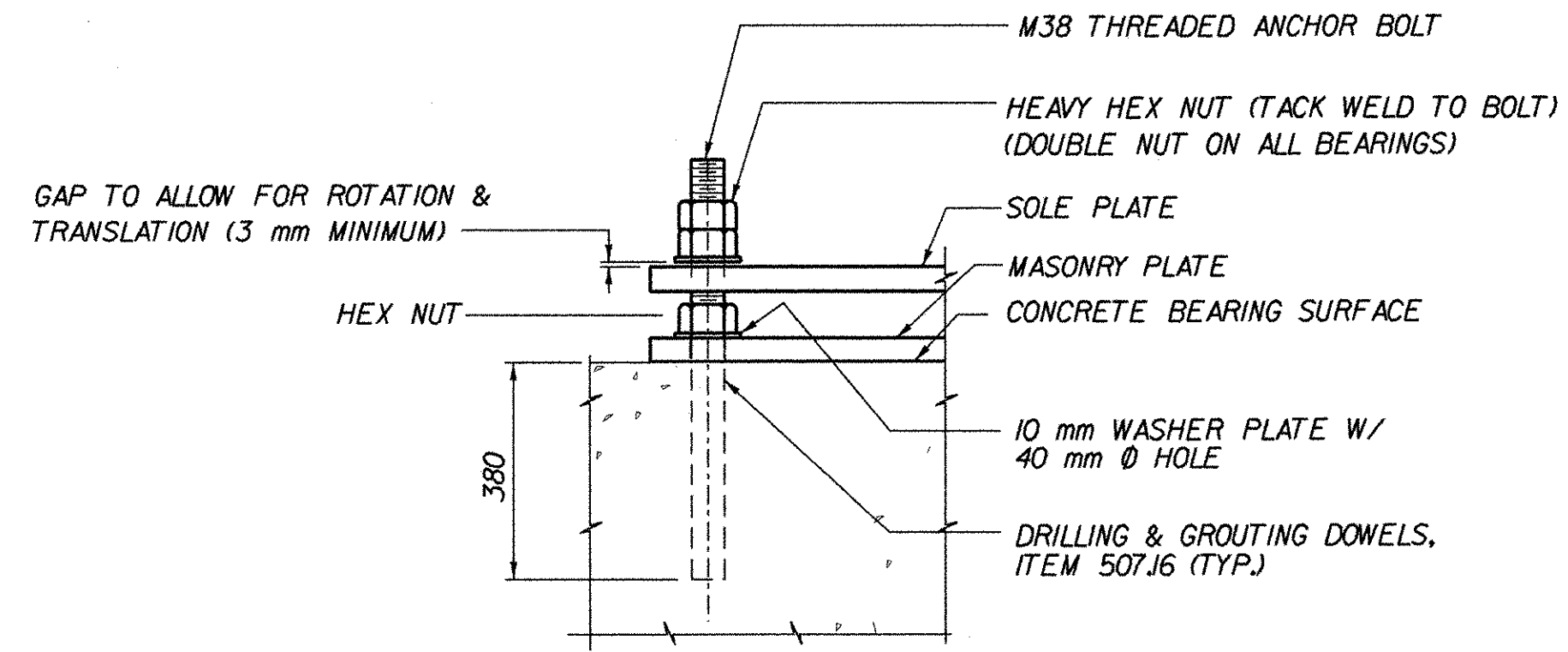
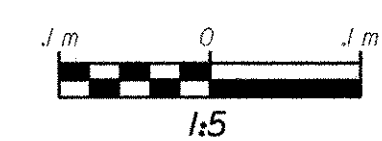
ELEVATION



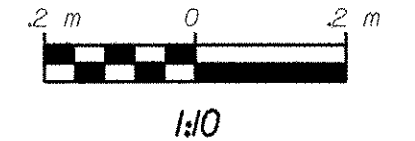
TYPICAL ANCHOR BOLT DETAIL FOR MASONRY PLATE



EXPANSION BEARING AT PIERS (FRONT VIEW) BEARING DETAILS



TYPICAL ANCHOR BOLT DETAIL



BEARING TABLE						
LOCATION	TYPE	ITEM NO.	QUANTITY REQUIRED	CAPACITY (KN)	SHAPE FACTOR	MAX. REACTION (KN)
PIERS	EXP.	53110	24	674	7.35	633

NOTE:
 THE DEAD LOAD JACKING FORCE IS APPROXIMATELY 396 KN PER BEARING.

NOTES:
 1. SEE SHEET NO. BRI FOR BEARING NOTES.
 2. SEE GENERAL NOTE 13 ON SHEET NO. BRI FOR SHOP DRAWING DISTRIBUTION LIST.

STATE OF VERMONT AGENCY OF TRANSPORTATION			
Town of	BENNINGTON	Bridge No. BR1100	
Highway No.	VT. RTE. 279	Log Sta. 17+780	
VT. RTE. 279 OVER VT. RAILWAY			
BEARING LAYOUT PLAN AND DETAILS			
Designed By	D. STECIAK	Drawn by K. RAPELLO/B. WEATHERY	
Checked By	M.W. OLSTAD	Date	02/04
PROJECT		PROJECT NO.	
BENNINGTON-HOOSICK		D.P.I. 0146(I) C/6	
I.G.C. Info.			
Bridge Sheet No. BR1106		Sheet 73 OF 83	

CHA CLOUGH, HARBOUR & ASSOCIATES LLP
 ENGINEERS, SURVEYORS, PLANNERS & LANDSCAPE ARCHITECTS
 111 WINNERS CIRCLE - ALBANY, NEW YORK 12205
 518-453-4500

FILE NAME = ut\12502\mstn\final\vr\brg\brgsht.plt
 DATE / TIME = 2/17/2004
 USER = 2225