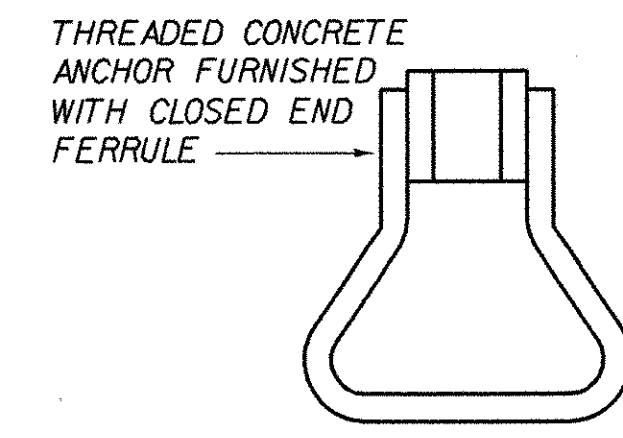
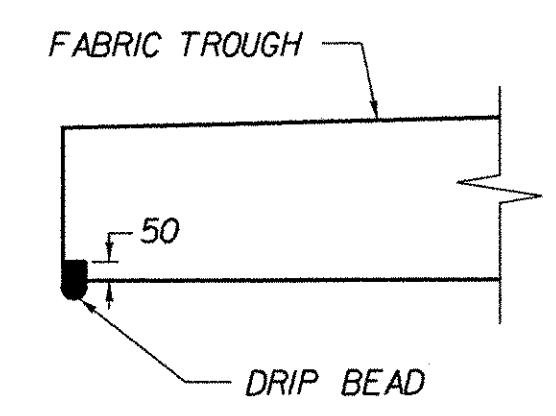


NOTE: UNLESS NOTED OTHERWISE, ALL STATIONS ARE IN KILOMETERS, ALL ELEVATIONS ARE IN METERS, AND ALL DIMENSIONS ARE IN MILLIMETERS.



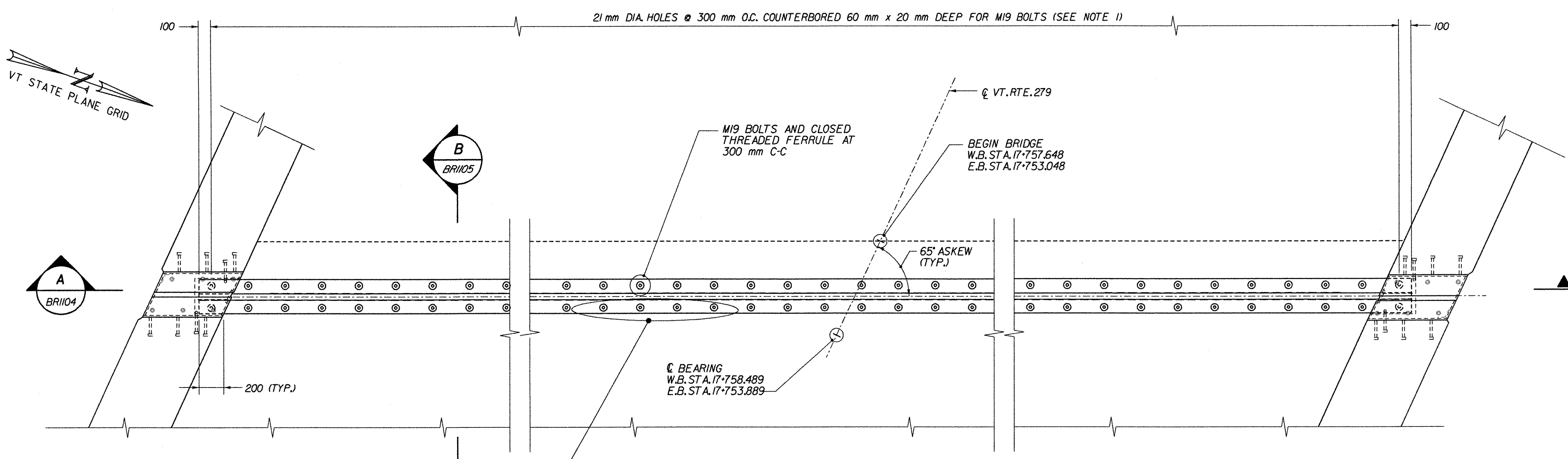
NOTE: THREADED CONCRETE ANCHORS MAY BE SUBSTITUTED FOR CLOSED THREADED FERRULES. CLOSED THREADED FERRULES MUST BE TACK WELDED TO JOINT ANGLE.

ANCHOR FERRULE DETAIL
N.T.S.

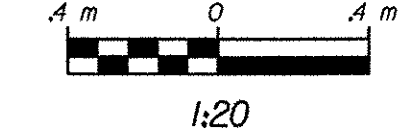


A DRIP BEAD, FABRICATED FROM PREFORMED MATERIAL IS TO BE MADE ON THE UNDERSIDE OF THE FABRIC TROUGH AS SHOWN WITH THE COST TO BE SUBSIDIARY TO ITEM 516J0 'BRIDGE EXPANSION JOINT' (VERMONT TYPE) (MOD.)

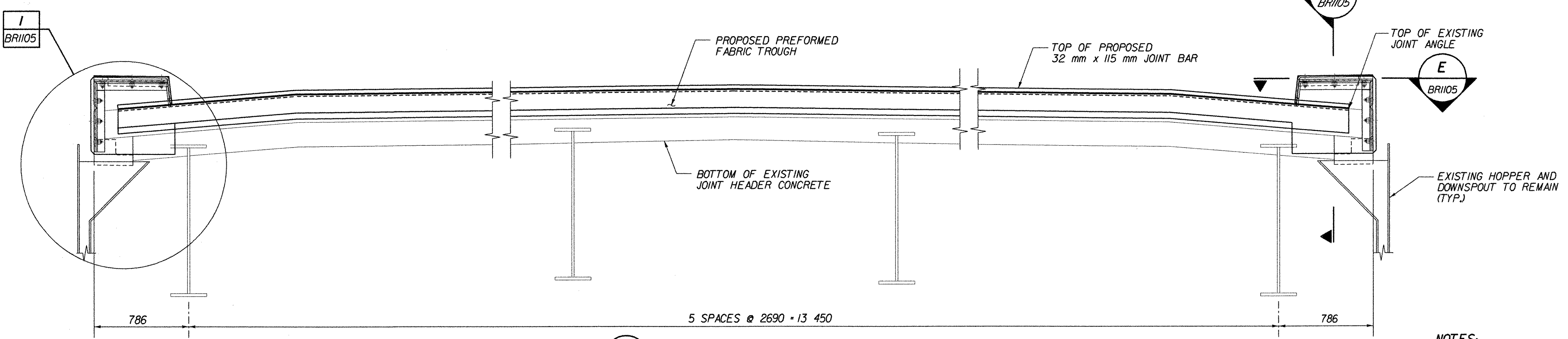
2 DRIP BEAD DETAIL
BRI105
N.T.S.



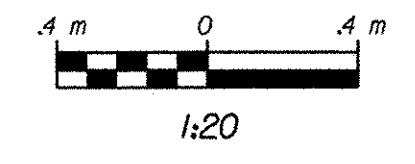
BRIDGE EXPANSION JOINT AT ABUTMENTS 1 & 3



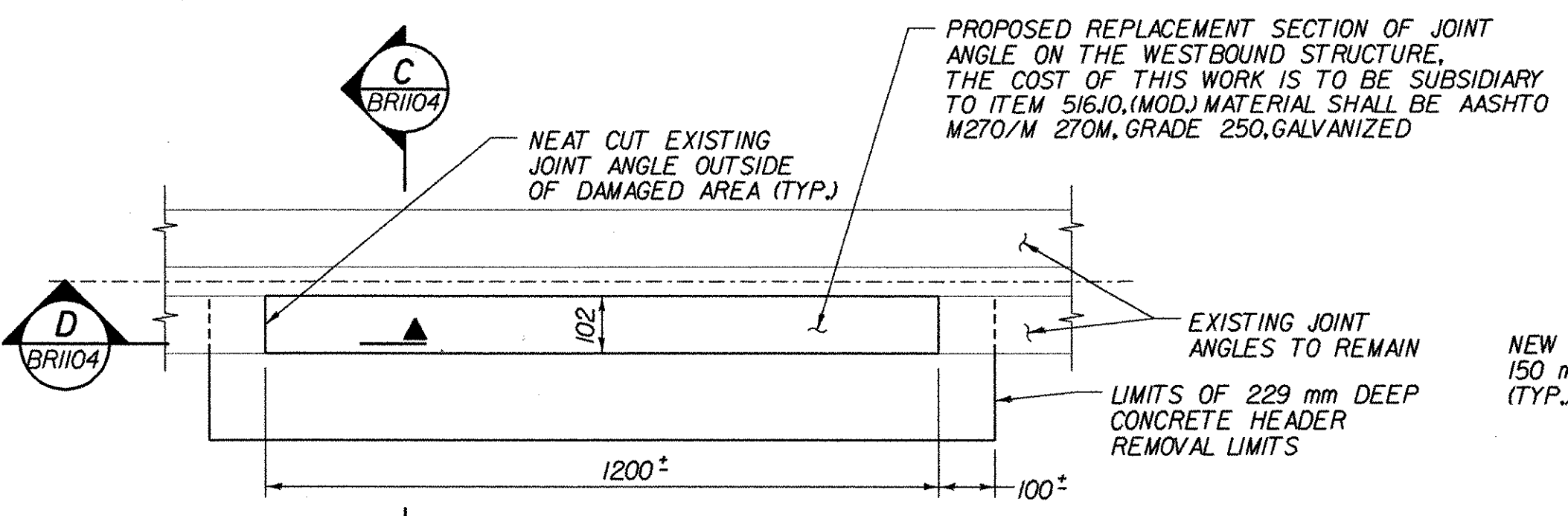
APPROXIMATE LOCATION OF DAMAGED JOINT ON WESTBOUND BRIDGE, SEE BELOW FOR REPAIR DETAILS. THE COST TO REPAIR THE DAMAGED JOINT SHALL BE SUBSIDIARY TO ITEM 516J0 (MOD.)



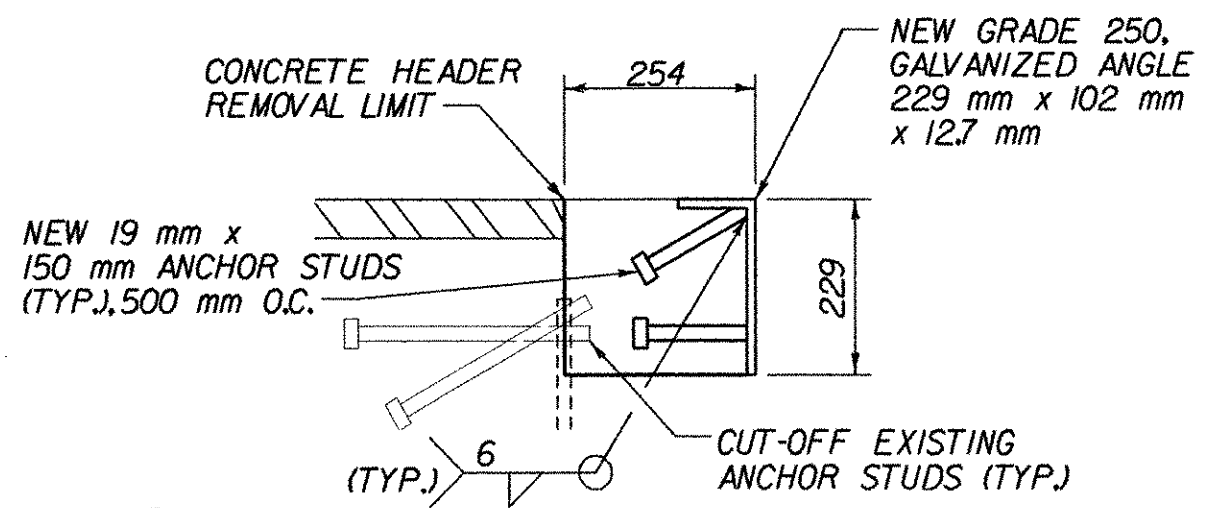
A BRIDGE SECTION AT JOINT
BRI104



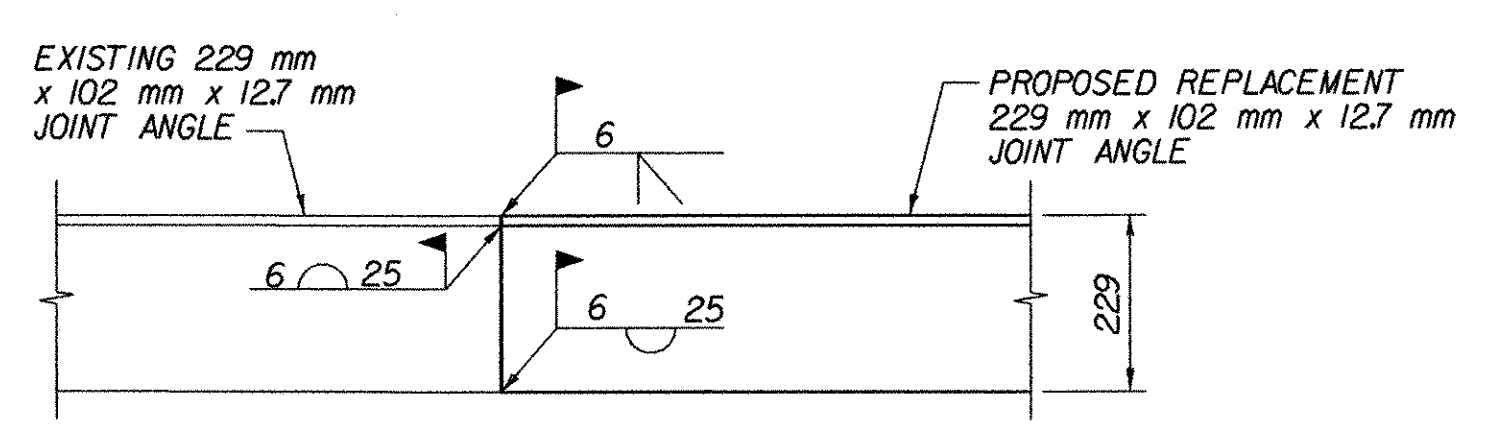
- NOTES:
- ADJUST SPACING OF 21 mm DIA. HOLES, WELDED STUDS, AND CLOSED THREADED FERRULES FOR CLEARANCE IN AREAS OF EXISTING BRACKETS AND ANCHOR STUDS.
 - ALL WORK REQUIRED TO PERFORM THE MODIFICATION OF THE EXPANSION JOINTS SHALL BE INCLUDED IN ITEM 516J0 BRIDGE EXPANSION (VERMONT TYPE) (MOD.).



JOINT REPAIR DETAIL PLAN
N.T.S.



C PROPOSED REPLACEMENT SECTION OF ANGLE
BRI104
N.T.S.



D PROPOSED ANGLE WELDS
BRI104
N.T.S.

STATE OF VERMONT
AGENCY OF TRANSPORTATION

Town of	BENNINGTON	Bridge No.	BRI100
Highway No.	VT. RTE. 279	Log Sta.	
		Surv. Sta.	17+780
VT. RTE. 279 OVER VT. RAILWAY			
EXPANSION JOINTS AT WEST ABUTMENTS			
Designed By	D. STECIAK	Drawn by	K. RAPELLO/B. WEATHERBY
Checked By	M.W. OLSTAD	Date	02/04
		Bridge Design Supervisor	M.W. OLSTAD
PROJECT	BENNINGTON-HOOSICK	PROJECT NO.	D.P.I. 0146(I) C/6
I.G.C. Info.			
Bridge Sheet No.	BRI104	Sheet	71 OF 83

FILE NAME = u:\12502\MSTN\FINAL\RR\brg\jntsh.tl.plt
DATE/TIME = 2/17/2004
USER = z225