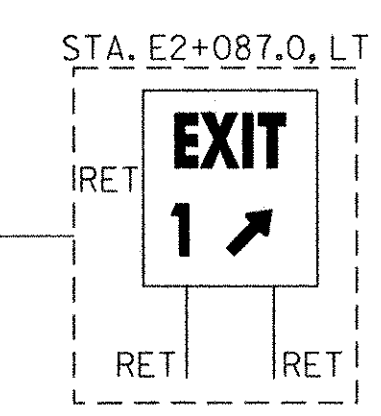
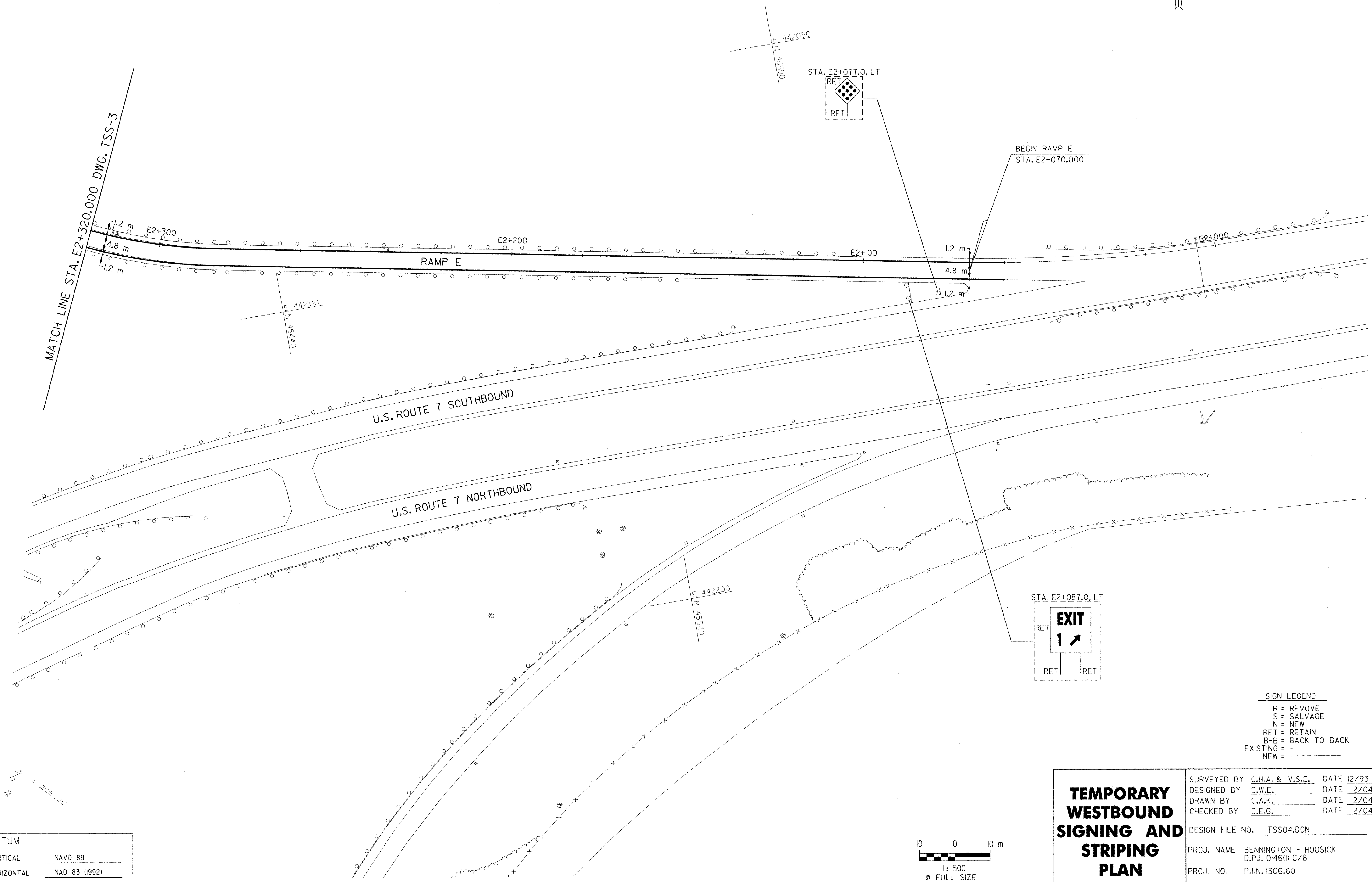


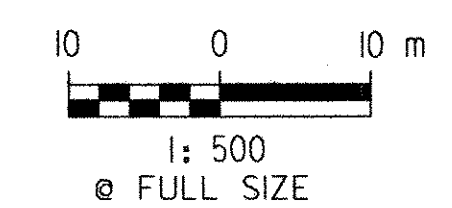
646.614 TEMPORARY 150 mm WHITE LINE (TYPE II TAPE)
 STA. E2+070.000 - STA. E2+320.000 SOLID RT (EDGE LINE)
 646.615 TEMPORARY 150 mm YELLOW LINE (TYPE II TAPE)
 STA. E2+070.000 - STA. E2+320.000 SOLID LT (EDGE LINE)



MATCH LINE STA. E2+320.000 DWG. TSS-3



SIGN LEGEND
 R = REMOVE
 S = SALVAGE
 N = NEW
 RET = RETAIN
 B-B = BACK TO BACK
 EXISTING = - - - - -
 NEW = _____



FILE NAME = u:\5116\vaot\contract6\tss04.dgn
 DATE/TIME = 2/16/2004
 USER = 2225

DATUM	
VERTICAL	NAVD 88
HORIZONTAL	NAD 83 (1992)

TEMPORARY WESTBOUND SIGNING AND STRIPING PLAN	SURVEYED BY	C.H.A. & V.S.E.	DATE	12/93
	DESIGNED BY	D.W.E.	DATE	2/04
	DRAWN BY	C.A.K.	DATE	2/04
	CHECKED BY	D.E.G.	DATE	2/04
DESIGN FILE NO.	TSS04.DGN			
PROJ. NAME	BENNINGTON - HOOSICK D.P.I. 0146(1) C/6			
PROJ. NO.	P.I.N. 1306.60			
DWG NO.	TSP-4	SHEET		39 OF 83