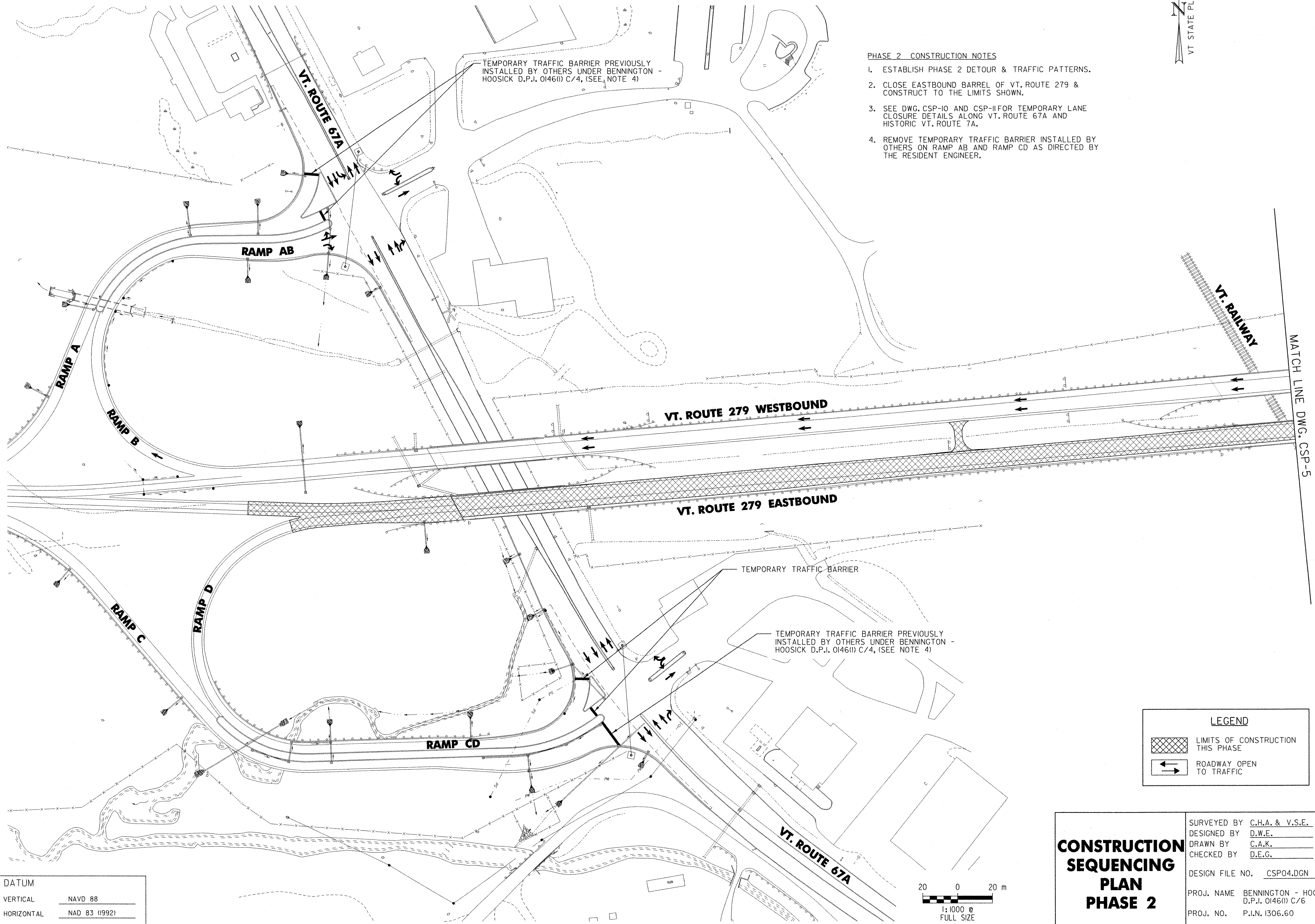
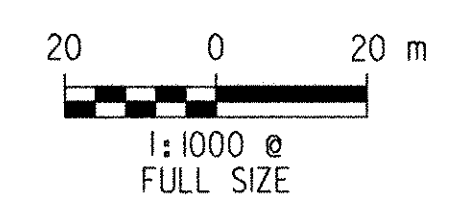


- PHASE 2 CONSTRUCTION NOTES**
1. ESTABLISH PHASE 2 DETOUR & TRAFFIC PATTERNS.
 2. CLOSE EASTBOUND BARREL OF VT. ROUTE 279 & CONSTRUCT TO THE LIMITS SHOWN.
 3. SEE DWG. CSP-10 AND CSP-11 FOR TEMPORARY LANE CLOSURE DETAILS, ALONG VT. ROUTE 67A AND HISTORIC VT. ROUTE 7A.
 4. REMOVE TEMPORARY TRAFFIC BARRIER INSTALLED BY OTHERS ON RAMP AB AND RAMP CD AS DIRECTED BY THE RESIDENT ENGINEER.



FILE NAME = ur:\5116\svoot\contract5\csp04.dgn
 DATE/TIME = 5/16/2004
 USER = 2225

DATUM	
VERTICAL	NAVD 88
HORIZONTAL	NAD 83 (1992)



LEGEND	
	LIMITS OF CONSTRUCTION THIS PHASE
	ROADWAY OPEN TO TRAFFIC

CONSTRUCTION SEQUENCING PLAN PHASE 2	SURVEYED BY	C.H.A. & V.S.E.	DATE	12/93
	DESIGNED BY	D.W.E.	DATE	2/04
	DRAWN BY	C.A.K.	DATE	2/04
	CHECKED BY	D.E.G.	DATE	2/04
DESIGN FILE NO.		CSP04.DGN		
PROJ. NAME	BENNINGTON - HOOSICK D.P.I. 0146(1) C/6			
PROJ. NO.	P.I.N. 1306.60			
DWG NO.	CSP-5	SHEET		28 OF 83