

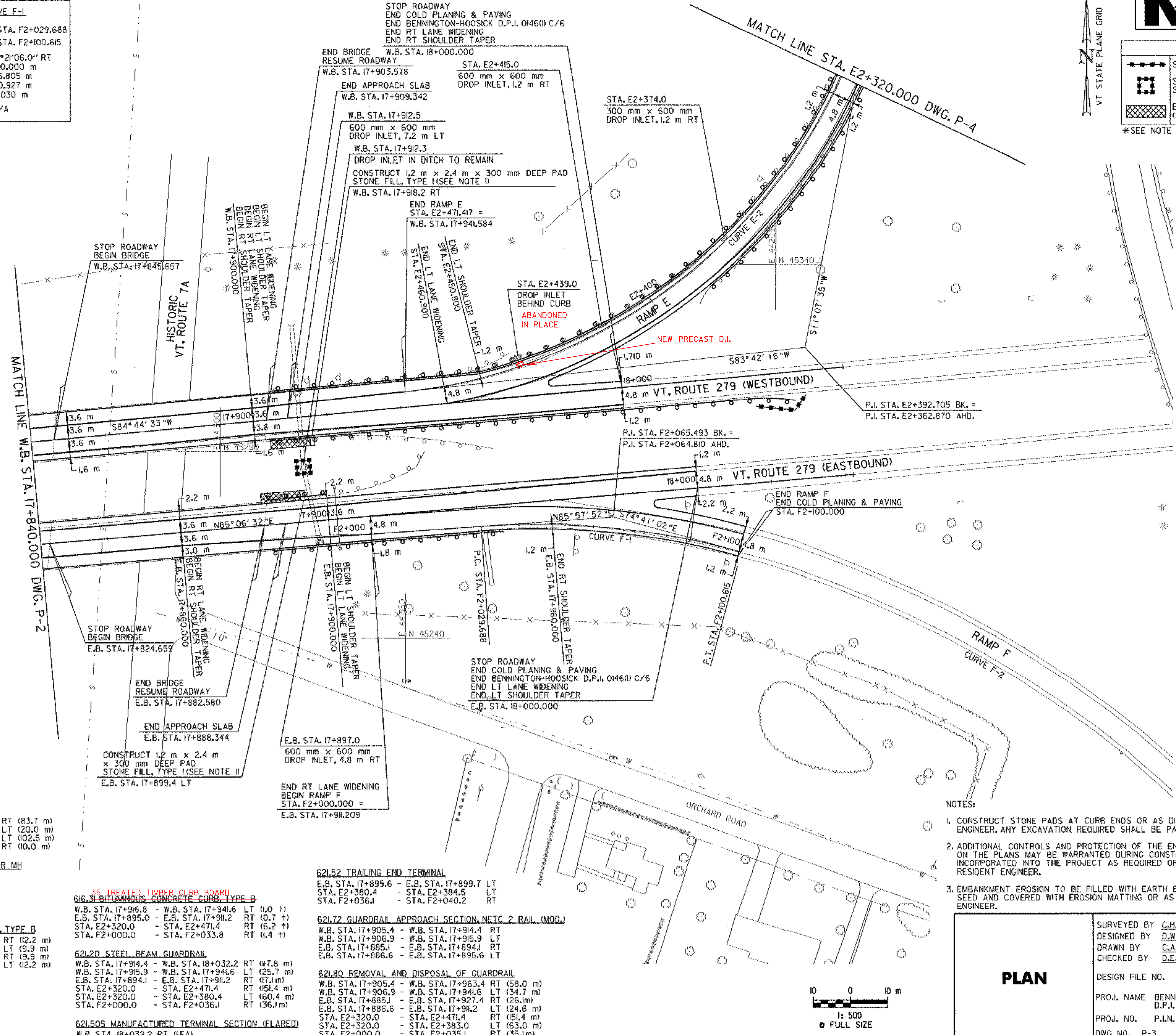


**LEGEND**

- SILT FENCE
- SILT FENCE FOR DRAINAGE STRUCTURE PROTECTION
- EROSION MATTING, (SEE NOTE 3)

\*SEE NOTE 2

CURVE E-2		CURVE E-1	
P.C.= STA. E2+284.58	P.T.= STA. E2+471.417	P.C.= STA. F2+029.688	P.T.= STA. F2+100.615
Δ= 72°34'42.0" RT	R=147.828 m	Δ= 19°21'06.0" RT	R= 210.000 m
T=108.547 m	L=187.258 m	T=35.805 m	L= 70.927 m
E=35.572 m	max=N/A	E=3.030 m	max=N/A



- 213.10 MILLED RUMBLE STRIPS**  
 W.B. STA. 17+916.3 - W.B. STA. 18+000.0 RT (83.7 m)  
 W.B. STA. 17+980.0 - W.B. STA. 18+000.0 LT (20.0 m)  
 E.B. STA. 17+897.5 - E.B. STA. 18+000.0 LT (102.5 m)  
 E.B. STA. 17+990.0 - E.B. STA. 18+000.0 RT (10.0 m)
- 604.40 CHANGE ELEVATION OF DI, CB OR MH**  
 W.B. STA. 17+912.5 LT  
 E.B. STA. 17+897.0 RT  
 STA. E2+374.0 RT  
 STA. E2+415.0 RT  
 STA. E2+439.0 RT
- 616.28 CAST-IN-PLACE CONCRETE CURB, TYPE B**  
 W.B. STA. 17+905.4 - W.B. STA. 17+917.6 RT (12.2 m)  
 W.B. STA. 17+906.9 - W.B. STA. 17+916.8 LT (9.9 m)  
 E.B. STA. 17+885.1 - E.B. STA. 17+895.0 RT (9.9 m)  
 E.B. STA. 17+886.6 - E.B. STA. 17+898.8 LT (12.2 m)

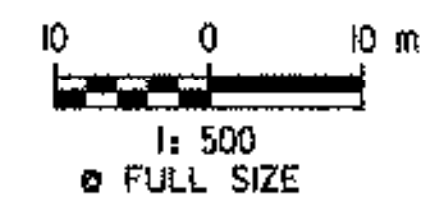
- 35 TREATED TIMBER CURB BOARD**  
**616.31 BITUMINOUS CONCRETE CURB, TYPE B**  
 W.B. STA. 17+916.8 - W.B. STA. 17+941.6 LT (14.0 m)  
 E.B. STA. 17+895.0 - E.B. STA. 17+911.2 RT (10.7 m)  
 STA. E2+320.0 - STA. E2+471.4 RT (16.2 m)  
 STA. F2+000.0 - STA. F2+033.8 RT (11.4 m)
- 621.20 STEEL BEAM GUARDRAIL**  
 W.B. STA. 17+914.4 - W.B. STA. 18+032.2 RT (117.8 m)  
 W.B. STA. 17+915.9 - W.B. STA. 17+941.6 LT (25.7 m)  
 E.B. STA. 17+894.1 - E.B. STA. 17+911.2 RT (17.1 m)  
 STA. E2+320.0 - STA. E2+471.4 RT (151.4 m)  
 STA. E2+320.0 - STA. E2+380.4 LT (60.4 m)  
 STA. F2+000.0 - STA. F2+036.1 RT (36.1 m)
- 621.505 MANUFACTURED TERMINAL SECTION (FLARED)**  
 W.B. STA. 18+032.2 RT (EA)

- 621.52 TRAILING END TERMINAL**  
 E.B. STA. 17+895.6 - E.B. STA. 17+899.7 LT  
 STA. E2+380.4 - STA. E2+384.5 LT  
 STA. F2+036.1 - STA. F2+040.2 RT
- 621.72 GUARDRAIL APPROACH SECTION, NETC 2 RAIL (MOD.)**  
 W.B. STA. 17+905.4 - W.B. STA. 17+914.4 RT  
 W.B. STA. 17+906.9 - W.B. STA. 17+915.9 LT  
 E.B. STA. 17+885.1 - E.B. STA. 17+894.1 RT  
 E.B. STA. 17+886.6 - E.B. STA. 17+895.6 LT
- 621.80 REMOVAL AND DISPOSAL OF GUARDRAIL**  
 W.B. STA. 17+905.4 - W.B. STA. 17+963.4 RT (58.0 m)  
 W.B. STA. 17+906.9 - W.B. STA. 17+941.6 LT (34.7 m)  
 E.B. STA. 17+885.1 - E.B. STA. 17+927.4 RT (26.1 m)  
 E.B. STA. 17+886.6 - E.B. STA. 17+911.2 LT (24.6 m)  
 STA. E2+320.0 - STA. E2+471.4 RT (151.4 m)  
 STA. E2+320.0 - STA. E2+383.0 LT (63.0 m)  
 STA. F2+000.0 - STA. F2+035.1 RT (35.1 m)

- NOTES:**
- CONSTRUCT STONE PADS AT CURB ENDS OR AS DIRECTED BY THE RESIDENT ENGINEER. ANY EXCAVATION REQUIRED SHALL BE PAID FOR UNDER ITEM 608.25.
  - ADDITIONAL CONTROLS AND PROTECTION OF THE ENVIRONMENT NOT SHOWN ON THE PLANS MAY BE WARRANTED DURING CONSTRUCTION AND SHALL BE INCORPORATED INTO THE PROJECT AS REQUIRED OR AS DIRECTED BY THE RESIDENT ENGINEER.
  - EMBANKMENT EROSION TO BE FILLED WITH EARTH BORROW, TOPSOIL AND SEED AND COVERED WITH EROSION MATTING OR AS DIRECTED BY THE RESIDENT ENGINEER.

**DATUM**

VERTICAL	NAVD 88
HORIZONTAL	NA D 83 (1992)



**PLAN**

SURVEYED BY	C.H.A. & V.S.E.	DATE	12/93
DESIGNED BY	D.W.E.	DATE	2/04
DRAWN BY	C.A.K.	DATE	2/04
CHECKED BY	D.E.G.	DATE	2/04
DESIGN FILE NO.	PLAN03.DGN		
PROJ. NAME	BENNINGTON - HOOSICK D.P.I. 0146(1) C/6		
PROJ. NO.	P.I.N. 1306.60		
DWG. NO.	P-3	SHEET	22 OF 83

FILE NAME = usn5116\vaot\contract6\plan03.dgn  
 DATE/TIME = 2/18/2004  
 USER = 2225