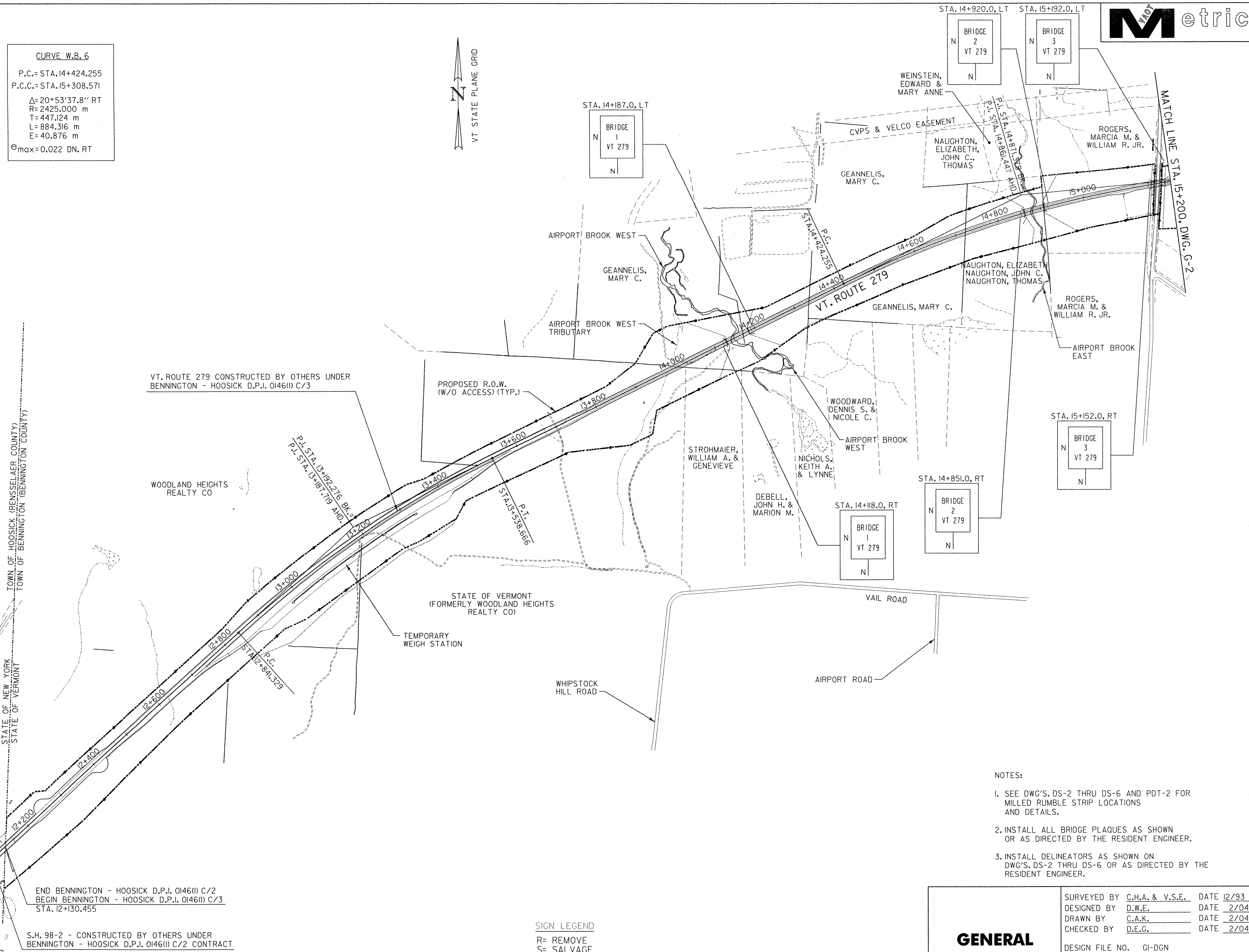
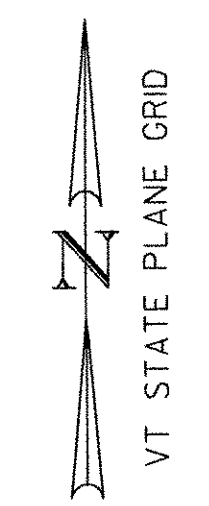


CURVE W.B. 5
 P.C.= STA.12+841.329
 P.T.= STA.13+538.666
 Δ=15°58'54.5" RT
 R=2500.000 m
 T=350.947 m
 L=697.337 m
 E=24.513 m
 e_{max}=0.021 DN, RT

CURVE W.B. 6
 P.C.= STA.14+424.255
 P.C.C.= STA.15+308.571
 Δ=20°53'37.8" RT
 R=2425.000 m
 T=447.124 m
 L=884.316 m
 E=40.876 m
 e_{max}=0.022 DN, RT



VT. ROUTE 279 CONSTRUCTED BY OTHERS UNDER BENNINGTON - HOOSICK D.P.I. 0146(I) C/3

PROPOSED R.O.W. (W/O ACCESS) (TYP.)

WOODLAND HEIGHTS REALTY CO

STATE OF VERMONT (FORMERLY WOODLAND HEIGHTS REALTY CO)

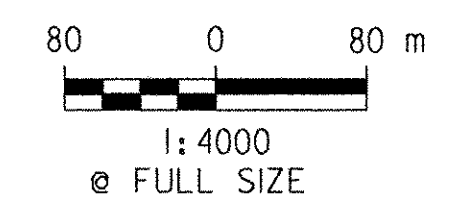
TEMPORARY WEIGH STATION

WHIPSTOCK HILL ROAD

AIRPORT ROAD

- NOTES:
- SEE DWG'S, DS-2 THRU DS-6 AND PDT-2 FOR MILLED RUMBLE STRIP LOCATIONS AND DETAILS.
 - INSTALL ALL BRIDGE PLAQUES AS SHOWN OR AS DIRECTED BY THE RESIDENT ENGINEER.
 - INSTALL DELINEATORS AS SHOWN ON DWG'S, DS-2 THRU DS-6 OR AS DIRECTED BY THE RESIDENT ENGINEER.

SIGN LEGEND
 R= REMOVE
 S= SALVAGE
 N= NEW
 RET= RETAIN
 B-B= BACK TO BACK
 EXISTING= _____
 NEW= _____



GENERAL PLAN

SURVEYED BY	C.H.A. & V.S.E.	DATE	12/93
DESIGNED BY	D.W.E.	DATE	2/04
DRAWN BY	C.A.K.	DATE	2/04
CHECKED BY	D.E.G.	DATE	2/04
DESIGN FILE NO.	GI-DGN		
PROJ. NAME	BENNINGTON - HOOSICK D.P.I. 0146(I) C/6		
PROJ. NO.	P.I.N. 1306.60		
DWG NO.	G-1	SHEET 18 OF 83	

DATUM

VERTICAL	NAVD 88
HORIZONTAL	NAD 83 (1992)

FILE NAME = u:\5116\svoot\contr-ect6\gl.dgn
 DATE/TIME = 2/16/2004
 USER = ZZZZ