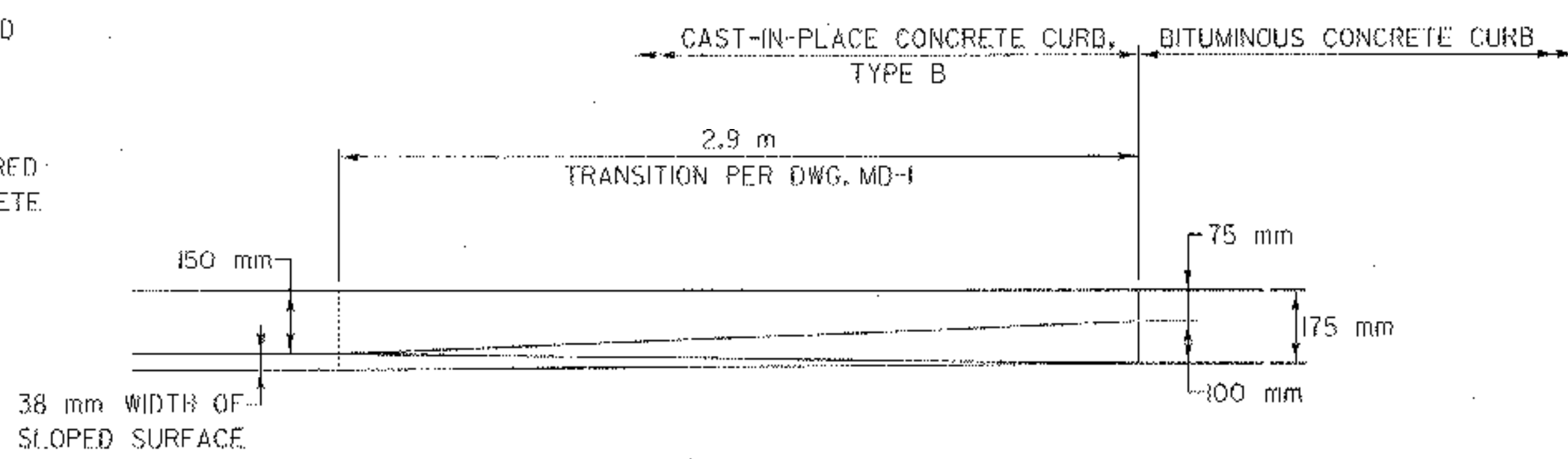


- NOTES:
1. BITUMINOUS CONCRETE CURB IS TO BE PLACED PRIOR TO THE INSTALLATION OF GUARDRAIL AND THE PLACEMENT OF THE WEARING COURSE OR AS DIRECTED BY THE RESIDENT ENGINEER.
 2. THE CROSS HATCHED AREA SHALL BE CONSIDERED SUBSIDIARY TO ITEM 616.28 BITUMINOUS CONCRETE CURB, TYPE B.
 3. MATCH 30 mm FACE TO WEARING COURSE.

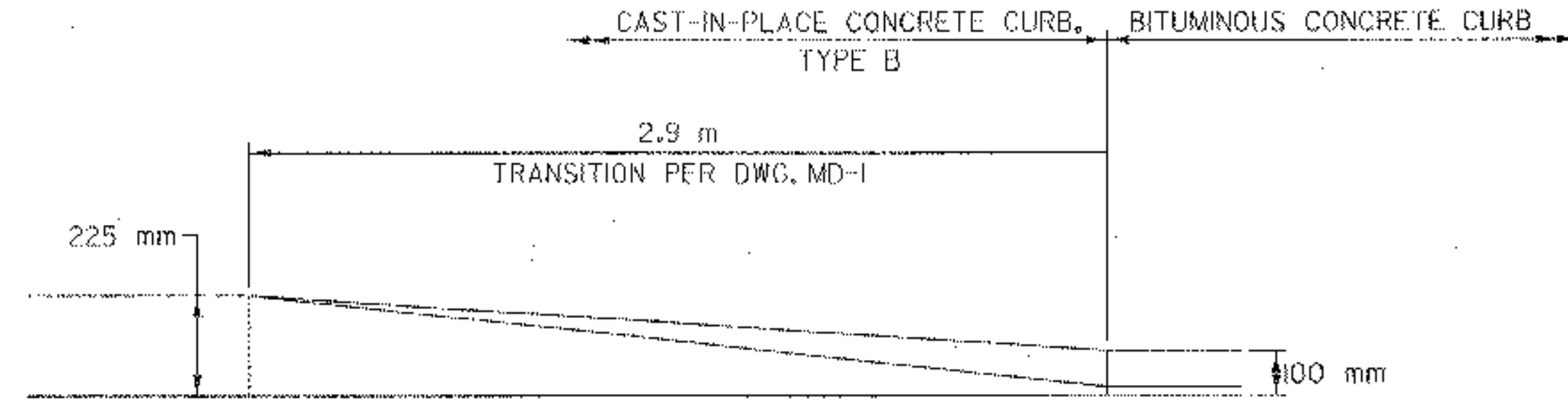
BITUMINOUS CONCRETE CURB, TYPE B DETAIL

N.T.S.

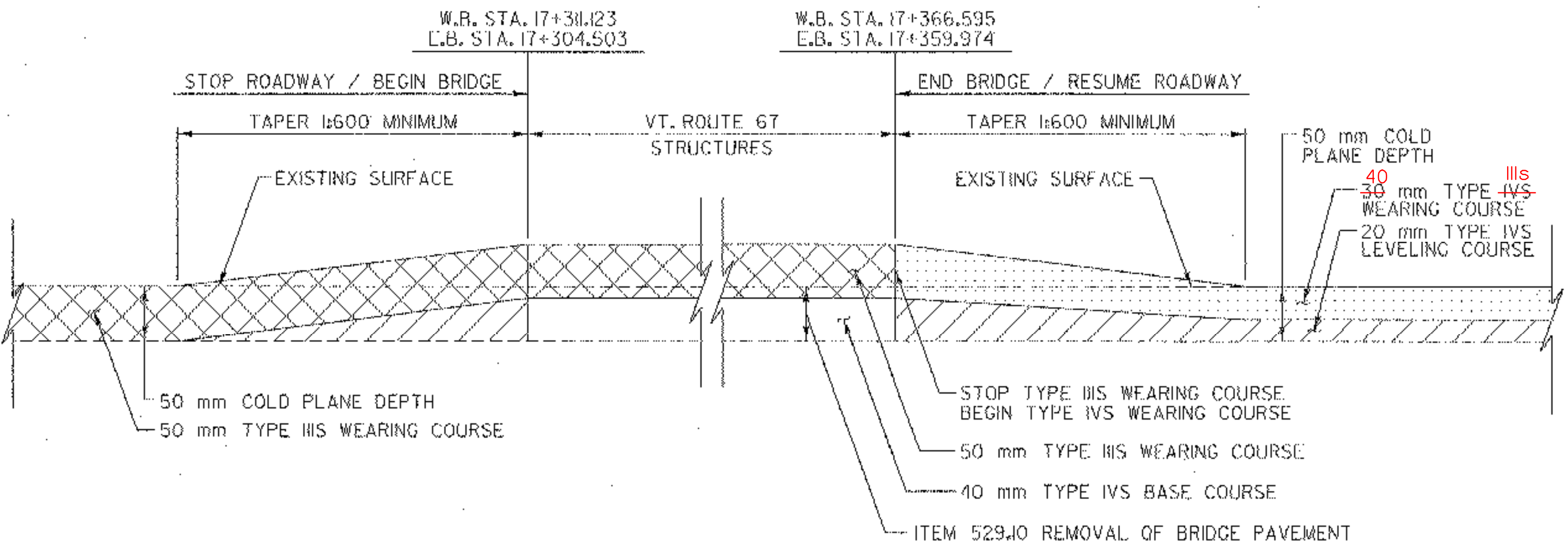
SUBSTITUTED TREATED TIMBER CURB



PLAN

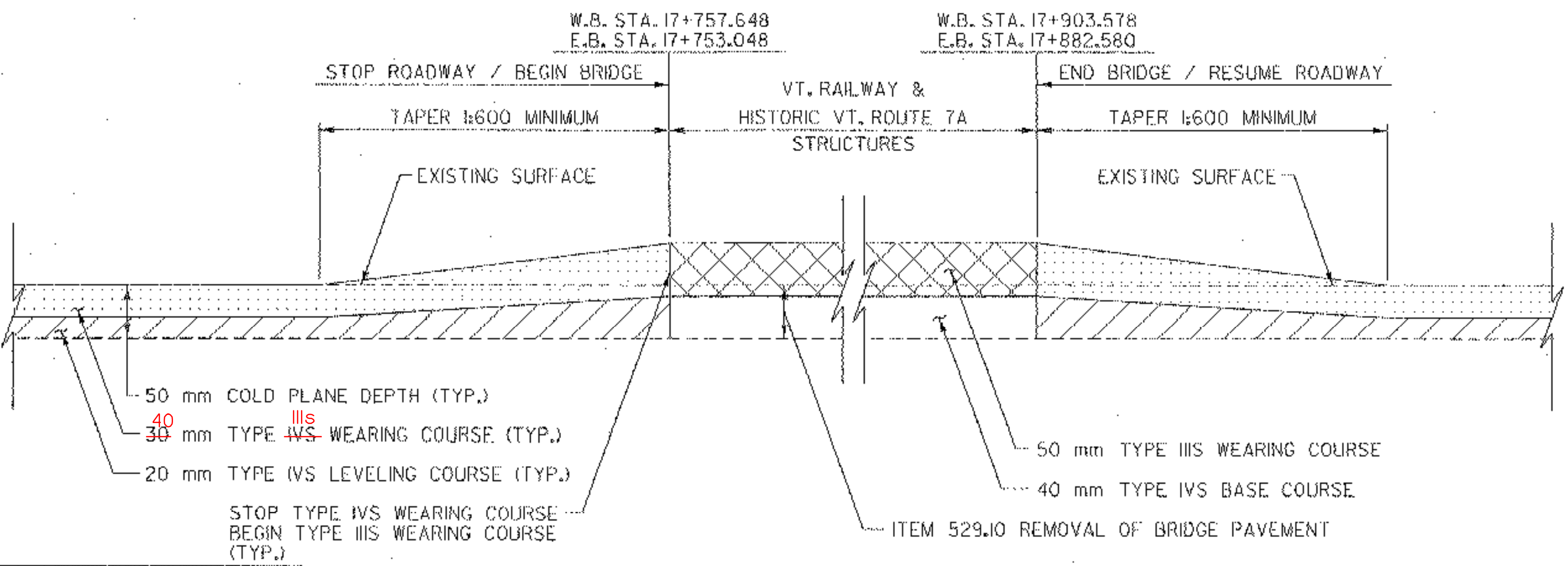


ELEVATION



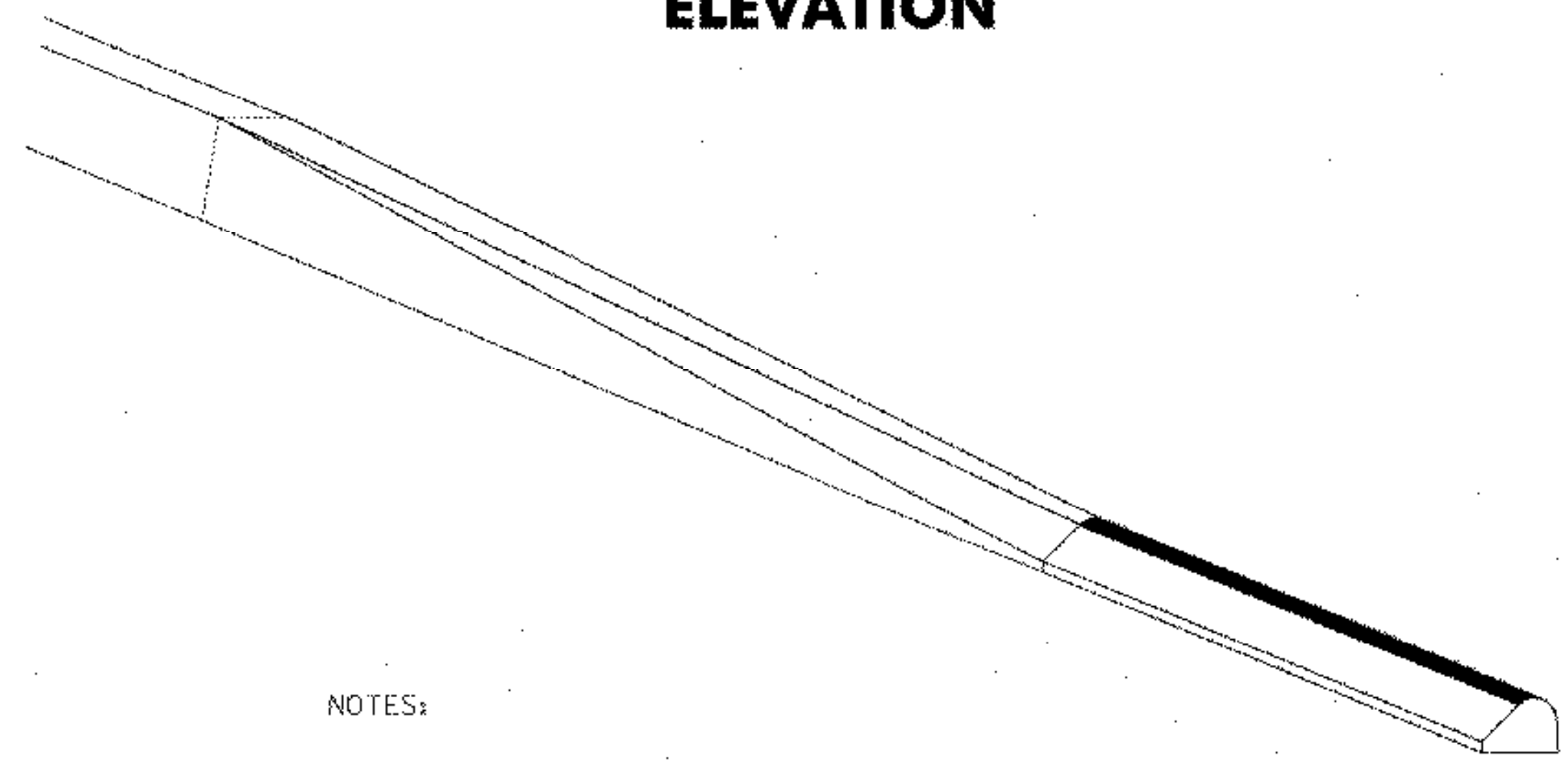
BRIDGE APPROACH TRANSITION DETAIL VT. ROUTE 67A

N.T.S.



BRIDGE APPROACH TRANSITION DETAIL VT. RAILWAY AND HISTORIC VT. ROUTE 7A

N.T.S.



- NOTES:
1. SEE VAOT STANDARD SHEET C-1M AND THE BITUMINOUS CONCRETE CURB, TYPE B DETAIL ON THIS SHEET FOR DETAILS ON THE TWO TYPES OF CURBS.
 2. SEE DWG'S MD-1 & MD-2 FOR BRIDGE APPROACH CURB DETAILS.

TREATED TIMBER CONCRETE CURB TO BITUMINOUS CURB TRANSITION DETAIL

N.T.S.

FILE NAME = u:\1115\work\contrans6\std_01.dgn DATE/TIME = 2/16/2004 USER = 2225

DATUM	
VERTICAL	NAVD 88
HORIZONTAL	NAD 83 (1992)

PAVING DETAILS SHEET	SURVEYED BY	C.H.A. & V.S.E.	DATE	12/93
	DESIGNED BY	D.W.E.	DATE	2/04
	DRAWN BY	C.A.K.	DATE	2/04
	CHECKED BY	D.F.G.	DATE	2/04
DESIGN FILE NO. PTD_01DGN				
PROJ. NAME BENNINGTON - HOOSICK D.P.L. 0146(1) C/6				
PROJ. NO. P.L.N. 1306.60				
DWG NO. PDT-1 SHEET 4 OF 83				