

STATE OF VERMONT AGENCY OF TRANSPORTATION



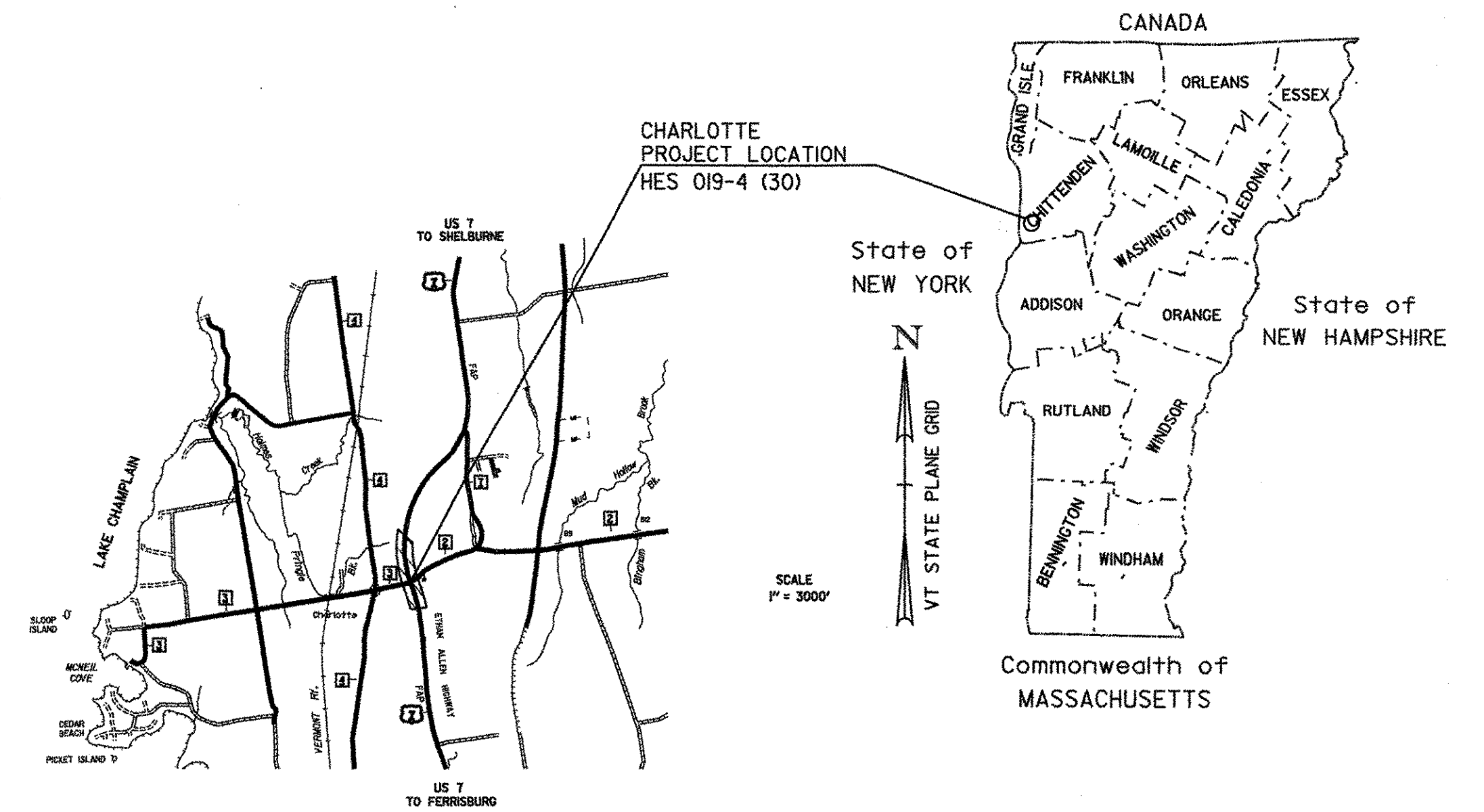
PROPOSED IMPROVEMENT TOWN OF CHARLOTTE COUNTY OF CHITTENDEN U.S. ROUTE 7

PROJECT LOCATION

BEGINNING AT A POINT ON U.S. 7 APPROXIMATELY 3.390 MILES
NORTHERLY OF THE FERRISBURGH-CHARLOTTE TOWN LINE AND
EXTENDING NORTHERLY 1100 FEET TO MM 3.598.

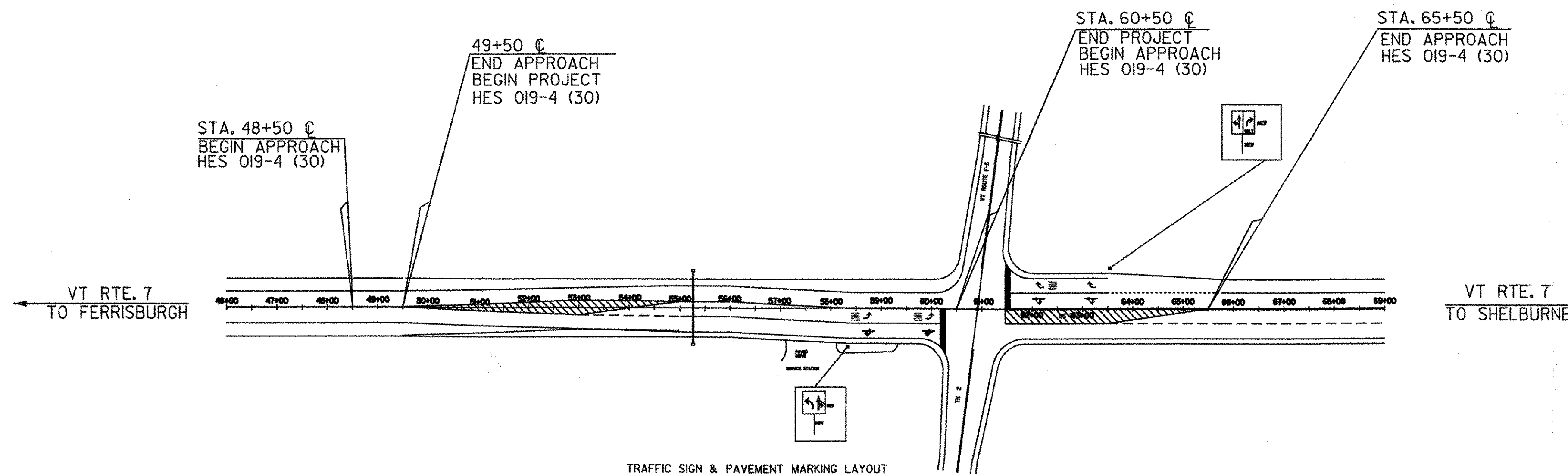
PROJECT DESCRIPTION

WORK TO BE PERFORMED UNDER THIS PROJECT INCLUDE IMPROVEMENTS TO THE
US 7/F-5 INTERSECTION IN CHARLOTTE, INCLUDING ADDITION OF A LEFT - TURN
LANE ON US 7 AND ADJUSTMENTS TO THE SIGNAL.



1. TITLE SHEET
2. TYPICAL SECTION
3. SUMMARY OF QUANTITIES
4. CONSTRUCTION APPROACH SIGNING
- 5-6. TRAFFIC & PAVEMENT LAYOUTS

E-100 CONSTRUCTION APPROACH SIGNS	01-02-04
E-102 CONSTRUCTION SIGN DETAILS	06-30-03
E-102A CONSTRUCTION SIGN DETAILS	08-08-95
E-106 TRAFFIC CONTROL - MISCELLANEOUS DETAILS	03-01-04
E-110 MAJOR MAINTENANCE OPERATION LANE CLOSURE	08-08-95
E-111 MINIOR MAINTENANCE OPERATION	03-11-97
E-119 UTILITY WORK ZONE	03-01-04
E-120 STANDARD SIGN PLACEMENT-EXPRESSWAY & FREEWAY	08-08-95
E-121 STANDARD SIGN PLACEMENT-CONVENTIONAL ROAD	08-08-95
E-127 ROUTE MARKINGS AT RURAL INTERSECTION	08-08-95
E-131 GUIDE SIGN DETAILS	08-08-95
E-145A REGULATORY SIGN DETAILS-LANE USE	
CONTROL SIGNS	12-23-94
E-164 SQUARE STEEL SIGN POST	05-20-99
E-171A TRAFFIC CONTROL SIGNALS GENERAL	
NOTES & DETAILS	08/9/95
E-171B TRAFFIC CONTROL SIGNALS MISC. DETAILS	08/9/95
E-191 PAVEMENT MARKING DETAILS	02/1/99
E-172 VEHICLE DETECTOR LOOP DETAILS	08/9/95
E-192 PAVEMENT MARKING DETAILS	10/12/00



TRAFFIC DATA

2004 ADT = 12,000 - 12,000
 2004 DHV = 1070 - 1200
 D = 51%
 T = 7%
 V = 50 mph

RECORD PLANS

CONTRACTOR: F.W. WHITCOMB CONSTRUCTION - WALPOLE, NH
 RESIDENT ENGINEER: I. JENIKE
 CONSTRUCTION BEGAN: MAY 5, 2005
 CONSTRUCTION COMPLETE: JUNE 3, 2005
 RECORD PLANS BY: I. JENIKE

I HEREBY CERTIFY THAT ALL THE CONSTRUCTION REQUIRED BY THIS SET OF DRAWINGS HAS BEEN ACCOMPLISHED AS INDICATED HEREIN.

BY: *[Signature]* RESIDENT ENGINEER
 DATE: 2/10/06

NOTE: Any further information concerning final quantities, amounts or other details relative to this project may be found at Central Files in the electronic archives.

CONVENTIONAL SYMBOLS

COUNTY LINE	
TOWN LINE	
LIMITS OF ACCESS	
POINT OF ACCESS	
FENCE LINE	
STONE WALL	
TRAVELED WAY	
GUARD RAIL	
RAILROAD	
SURVEY LINE	
CULVERT	
POWER POLE	
TELEPHONE POLE	
TREES	
CONTROL OF ACCESS	
PROPERTY LINE	
R.O.W. TAKING LINE	
SLOPE RIGHTS	
TOP OF CUT	
TOE OF SLOPE	

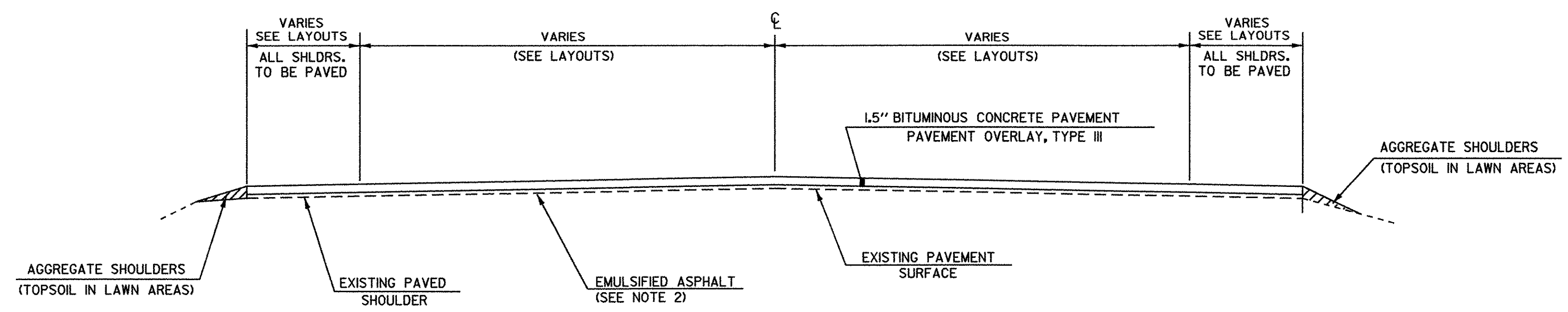
SURVEYED BY :
 SURVEYED DATE :

DATUM
 VERTICAL N/A
 HORIZONTAL N/A

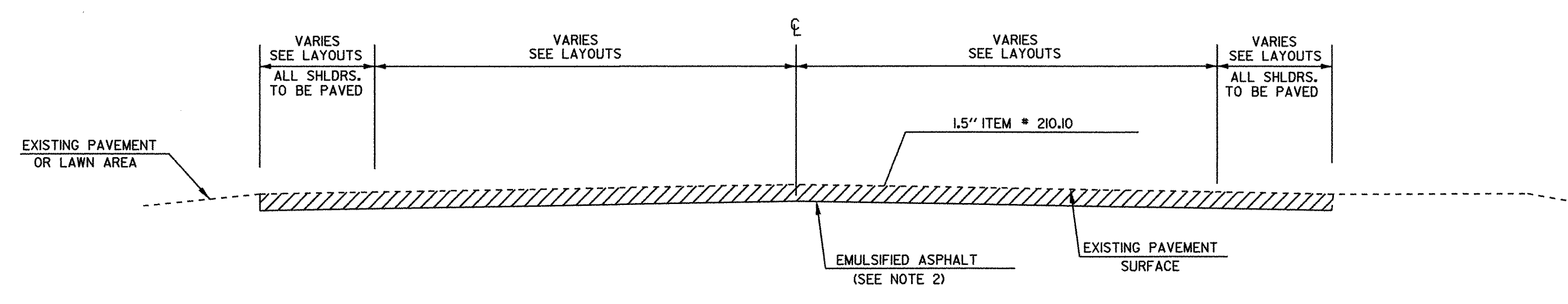
THESE PLANS ARE SUBJECT TO SUCH ENGINEERING CHANGES AS MAY BE REQUIRED BY THE FEDERAL HIGHWAY ADMINISTRATION OR THE DIRECTOR OF PROGRAM DEVELOPMENT.

CONSTRUCTION IS TO BE CARRIED ON IN ACCORDANCE WITH THESE PLANS AND THE STANDARD SPECIFICATIONS FOR CONSTRUCTION DATED 2001, AS APPROVED BY THE FEDERAL HIGHWAY ADMINISTRATION ON JANUARY 4, 2001 FOR USE ON THIS PROJECT, INCLUDING ALL SUBSEQUENT REVISIONS AND SUCH REVISED SPECIFICATIONS AND SPECIAL PROVISIONS AS ARE INCORPORATED IN THESE PLANS.

DIRECTOR OF PROGRAM DEVELOPMENT	
APPROVED <i>[Signature]</i>	DATE 2/27/06
PROJECT MANAGER : AMY GAMBLE	
PROJECT NAME : CHARLOTTE	
PROJECT NUMBER : HES 019-4 (30)	
SHEET 1 OF 6 SHEETS	



OVERLAY TYPICAL SECTION
STA. 48+50 TO STA. 65+50



COLD PLANED TYPICAL SECTION

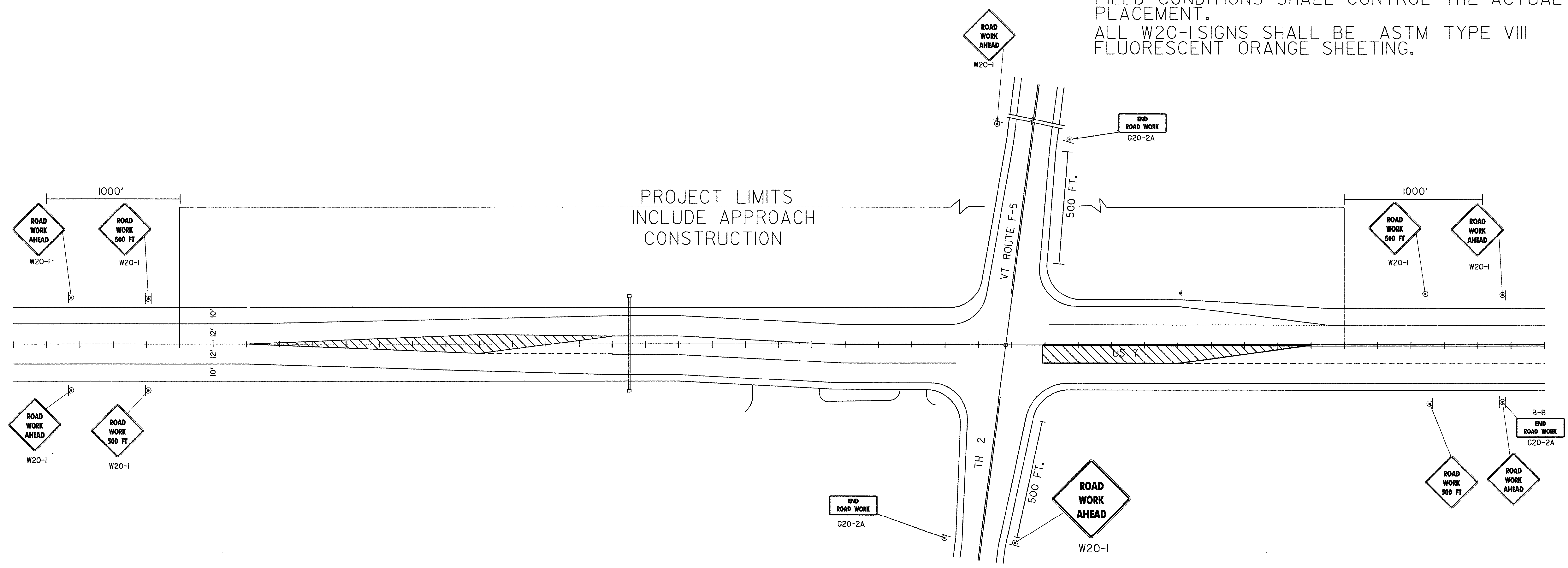
STA. 48+50 TO STA. 49+00
STA. 65+00 TO STA. 65+50

NOTES

1. THE PAVEMENT WEARING COURSE SHALL BE TYPE III. THE LEVELING COURSE SHALL BE TYPE IV UNLESS OTHERWISE DIRECTED BY THE RESIDENT ENGINEER. LEVELING HAS BEEN INCLUDED TO RESHAPE THE ROADWAY PRIOR TO PAVING THE TOP COURSE ALONG THE OVERLAY AND COLD PLANE TYPICAL SECTIONS. AN ESTIMATED THICKNESS OF .5" OF ITEM 406.25 HAS BEEN INCLUDED TO COVER THIS PROVISION. ALL ASPHALT CEMENT USED IN THE BITUMINOUS CONCRETE PAVEMENT SHALL BE PG 64-28.
2. EMULSIFIED ASPHALT SHALL BE APPLIED ON EXISTING PAVEMENT SURFACES, BETWEEN ALL COURSES OF PAVEMENT AT THE RATE OF 0.015 G/SY OR AS DIRECTED BY THE RESIDENT ENGINEER.
3. BITUMINOUS CONCRETE PAVEMENT TOLERANCE = +/- .25 Inches (TOTAL THICKNESS EXCLUDING LEVELING).
6. COLD PLANING TO BE COMPLETED ACCORDING TO THE TYPICAL OR AS NOTED OTHERWISE ON THE PLANS. A FULL DEPTH BUTT JOINT SHALL BE CONSTRUCTED AT THE PROJECT BEGINNING/END AND AT ALL SIDE ROAD APPROACHES AS DENOTED ON THE PROJECT PLANS OR AS OTHERWISE DIRECTED BY THE RESIDENT ENGINEER.
8. ALL DRIVES SHALL RECEIVE A PAVED APRON AS DIRECTED BY THE RESIDENT ENGINEER. ANY AND ALL REQUIRED EXCAVATION IN DRIVE AREAS SHALL BE AS DIRECTED AND WILL BE PAID FOR UNDER THE APPLICABLE RENTAL ITEM(S). IF REQUIRED, A NEW DRIVEWAY SUBBASE SHALL BE CONSTRUCTED AND WILL BE PAID FOR UNDER ITEM 301.29, SUBBASE OF CRUSHED GRAVEL (FINE GRADED). A NEW BITUMINOUS SURFACE SHALL BE CONSTRUCTED AS DIRECTED AND WILL BE PAID FOR UNDER ITEM 406.25. ESTIMATED QUANTITIES OF THE ABOVE ITEMS HAVE BEEN INCLUDED TO PAY FOR THIS WORK.
10. BITUMINOUS CONCRETE PAVEMENT WORK, WHICH COULD INVOLVE SOME HAND-WORK (SUCH AS DRIVE AND SIDEROAD APPROACHES AND AROUND DRAINAGE/UTILITY STRUCTURES), SHALL BE PAID FOR AT THE CONTRACT UNIT PRICE FOR ITEM 406.25, BITUMINOUS CONCRETE PAVEMENT.
11. ALL EDGES OF PAVEMENT SHALL BE BACKED UP FULL HEIGHT WITH AGGREGATE SHOULDER MATERIAL, OR AS DIRECTED BY THE RESIDENT ENGINEER AND WILL BE PAID FOR UNDER ITEM 402.12, AGGREGATE SHOULDERS.
12. GRASS GROWING ADJACENT TO PAVEMENT, OR THROUGH CRACKS IN THE PAVEMENT, WHICH MAY HAMPER THE PLACEMENT OF NEW BITUMINOUS CONCRETE, SHALL BE REMOVED BY THE CONTRACTOR, AS DIRECTED BY THE ENGINEER. PAYMENT FOR THIS WORK WILL NOT BE MADE DIRECTLY, BUT WILL BE CONSIDERED INCIDENTAL TO ITEM 406.25 BITUMINOUS CONCRETE PAVEMENT.

PROJECT NAME:	CHARLOTTE
PROJECT NUMBER:	HES 019-4 (30)
PROJECT MANAGER:	AMY GAMBLE
DESIGNED BY:	AL JONES
PW/Wilmington NH tsig(5)s/traffic/87b203	PLOT DATE: 27-JUL-2004
SHEET 2 OF 6	

TYPICAL APPROACH SIGNING
 (SIGNS NOT SHOWN FOR OPPOSITE DIRECTION)
 ALL DISTANCES ARE DESIRABLE MINIMUMS.
 FIELD CONDITIONS SHALL CONTROL THE ACTUAL
 PLACEMENT.
 ALL W20-1 SIGNS SHALL BE ASTM TYPE VIII
 FLUORESCENT ORANGE SHEETING.



CONSTRUCTION APPROACH SIGNS

SEE STANDARD E-100

NOT TO SCALE

DATUM
 VERTICAL _____
 HORIZONTAL _____

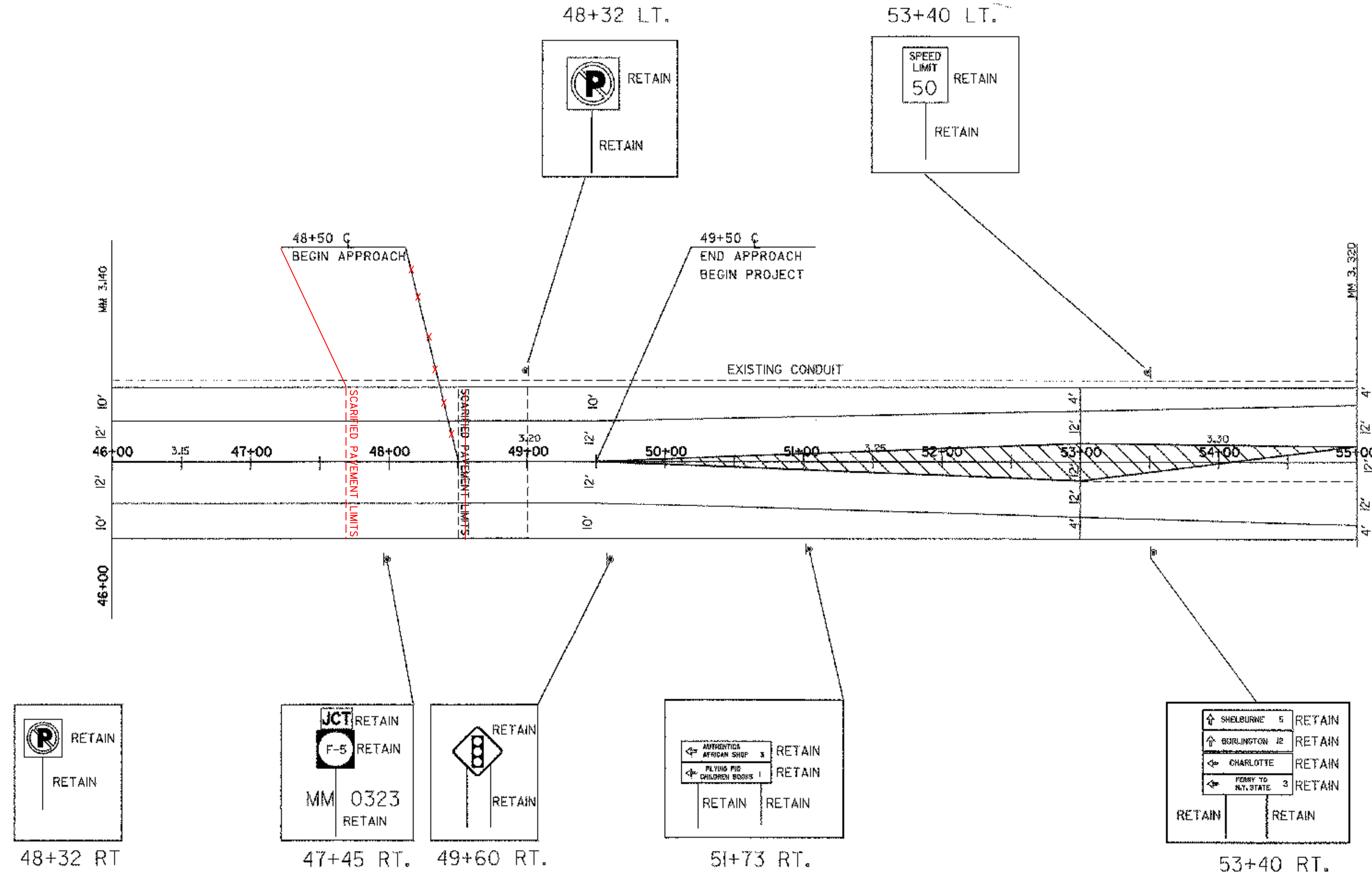
PREPARED BY AL JONES DATE 3-4-04
 CHECKED BY _____ DATE _____
 PROJECT MANAGER _____
 PROJ. CHARLOTTE
 HES 019-4 (30)
 SHEET 4 OF 6 SHEETS

BEGIN PAINTED ISLAND
 49+50 CL AND PAINTED ISLAND 55+00 CL

DURABLE 4" WHITE LINE
 STA. 48+50 RT. ~ STA. 49+00 RT
 STA. 48+50 LT. ~ STA. 49+00 LT

BEGIN SCARIFIED PAVEMENT
 STA. 48+50 CL ~ STA. 49+00 CL

DURABLE DOTTED LINE WHITE LINE
 STA. 53+00 RT. ~ STA. 55+00 RT



TRAFFIC SIGN & PAVEMENT MARKING LAYOUT
 STA. 46+00 - STA. 55+00

NOT TO SCALE

LEGEND

SCARIFIED PAVEMENT LIMITS -----

PREPARED BY _____ DATE _____
 CHECKED BY _____ DATE _____
 PROJECT MANAGER _____
 PROJ. CHARLOTTE
 HES 019-4 (30)
 SHEET 5 OF 6 SHEETS

BEGIN PAINTED ISLAND
 STA. 61+46 C AND PAINTED ISLAND STA. 65+50 C

DURABLE 4" WHITE LINE
 55+00 LT. ~ SL 12+75 LT.
 SL 12+75 RT. ~ 65+50 LT.
 55+00 RT. ~ SL 15+15 RT.
 SL 15+15 LT. ~ 65+50 RT.

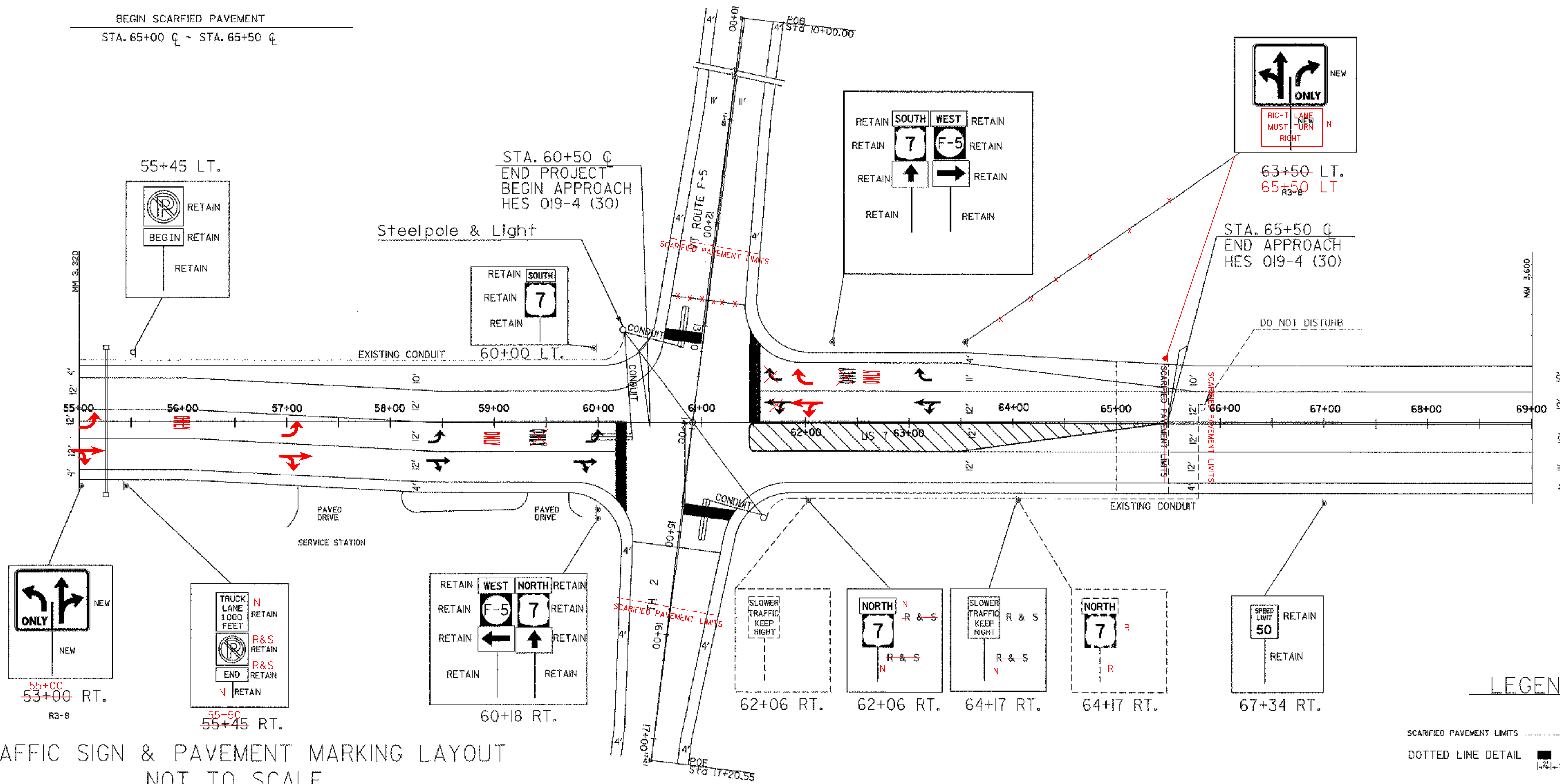
DURABLE DOTTED LINE WHITE LINE
 63+50 LT. ~ 65+50 LT.
 63+50 RT. ~ 65+50 RT.

DURABLE ARROW MARKINGS
 2 @ STA. 58+35 RT
 2 @ STA. 59+88 RT
 2 @ STA. 61+60 LT
 2 @ STA. 63+05 LT

DURABLE 24" STOPBAR
 STA. 60+17 RT
 STA. 61+46 LT
 TH. 2 STA. 60+84 77 RT
 RTE F5 STA. 61+64 80 LT

DURABLE LETTER WORD MARKING
 STA. 59+42 RT (ONLY)
 STA. 62+33 LT (ONLY)

BEGIN SCARIFIED PAVEMENT
 STA. 65+00 C ~ STA. 65+50 C



TRAFFIC SIGN & PAVEMENT MARKING LAYOUT
 NOT TO SCALE

LEGEND

SCARIFIED PAVEMENT LIMITS
 DOTTED LINE DETAIL

DATUM
 VERTICAL _____
 HORIZONTAL _____

PREPARED BY AL JONES DATE 06/23/04
 CHECKED BY AL JONES DATE 06/23/04
 PROJECT MANAGER AMY GAMBLE DATE 06/23/04
 PROJ. CHARLOTTE
 HES 019-4 (30)
 SHEET 5 OF 6 SHEETS