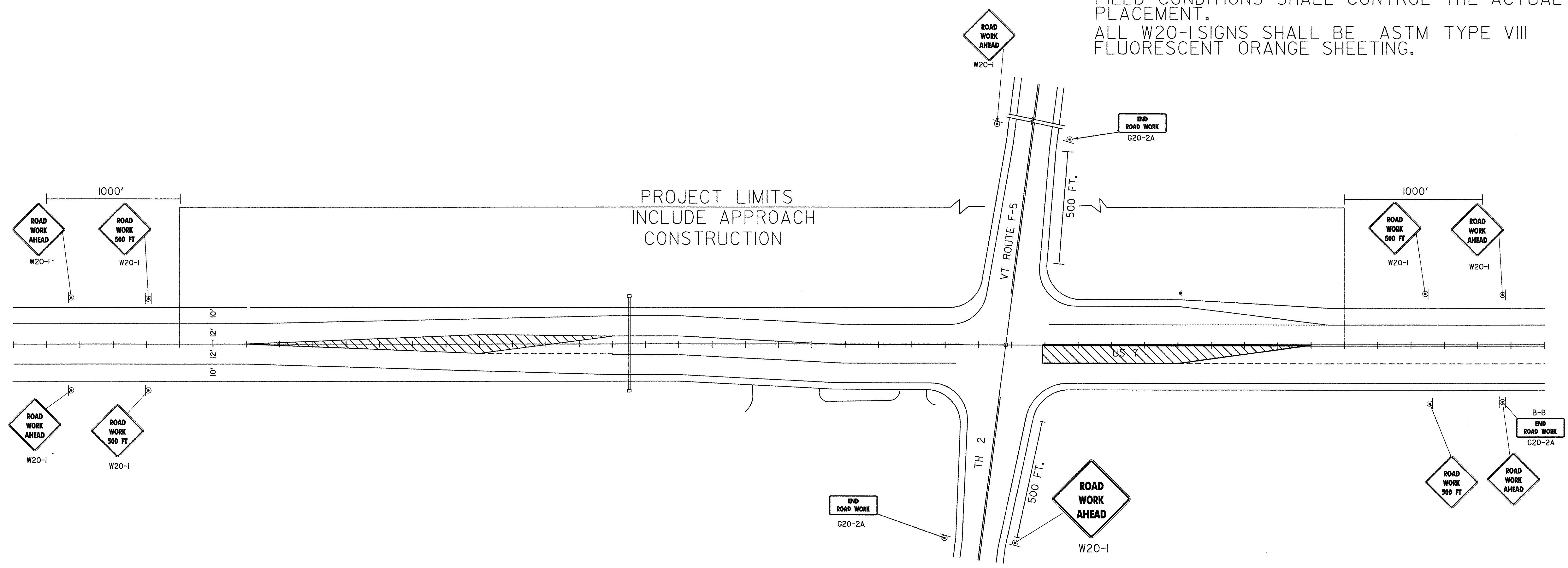


TYPICAL APPROACH SIGNING
 (SIGNS NOT SHOWN FOR OPPOSITE DIRECTION)
 ALL DISTANCES ARE DESIRABLE MINIMUMS.
 FIELD CONDITIONS SHALL CONTROL THE ACTUAL
 PLACEMENT.
 ALL W20-1 SIGNS SHALL BE ASTM TYPE VIII
 FLUORESCENT ORANGE SHEETING.



CONSTRUCTION APPROACH SIGNS

SEE STANDARD E-100

NOT TO SCALE

DATUM
 VERTICAL _____
 HORIZONTAL _____

PREPARED BY AL JONES DATE 3-4-04
 CHECKED BY _____ DATE _____
 PROJECT MANAGER _____
 PROJ. CHARLOTTE
 HES 019-4 (30)
 SHEET 4 OF 6 SHEETS