

203.16 Solid Rock Exc.

-2.7	188.1	-2.7	188.1	191
-2.7	188.33	-3.0	188.022	190
-4.26	190.19	-3.9	188.038	189
-5.41	191.10	-4.1	187.671	188
-6.44	191.08	-6.1	187.673	187
-7.85	190.8	0	187.817	186
-7.2	187.946	2.0	187.397	185
-6.98	187.073	1.0	187.535	
-6.1	187.073	0	187.90	
-6.1	187.671	-1.5	188.0	
-3.9	188.038	-2.07	188.59	
-3.0	188.022	-2.2	188.10	
-2.7	188.1			

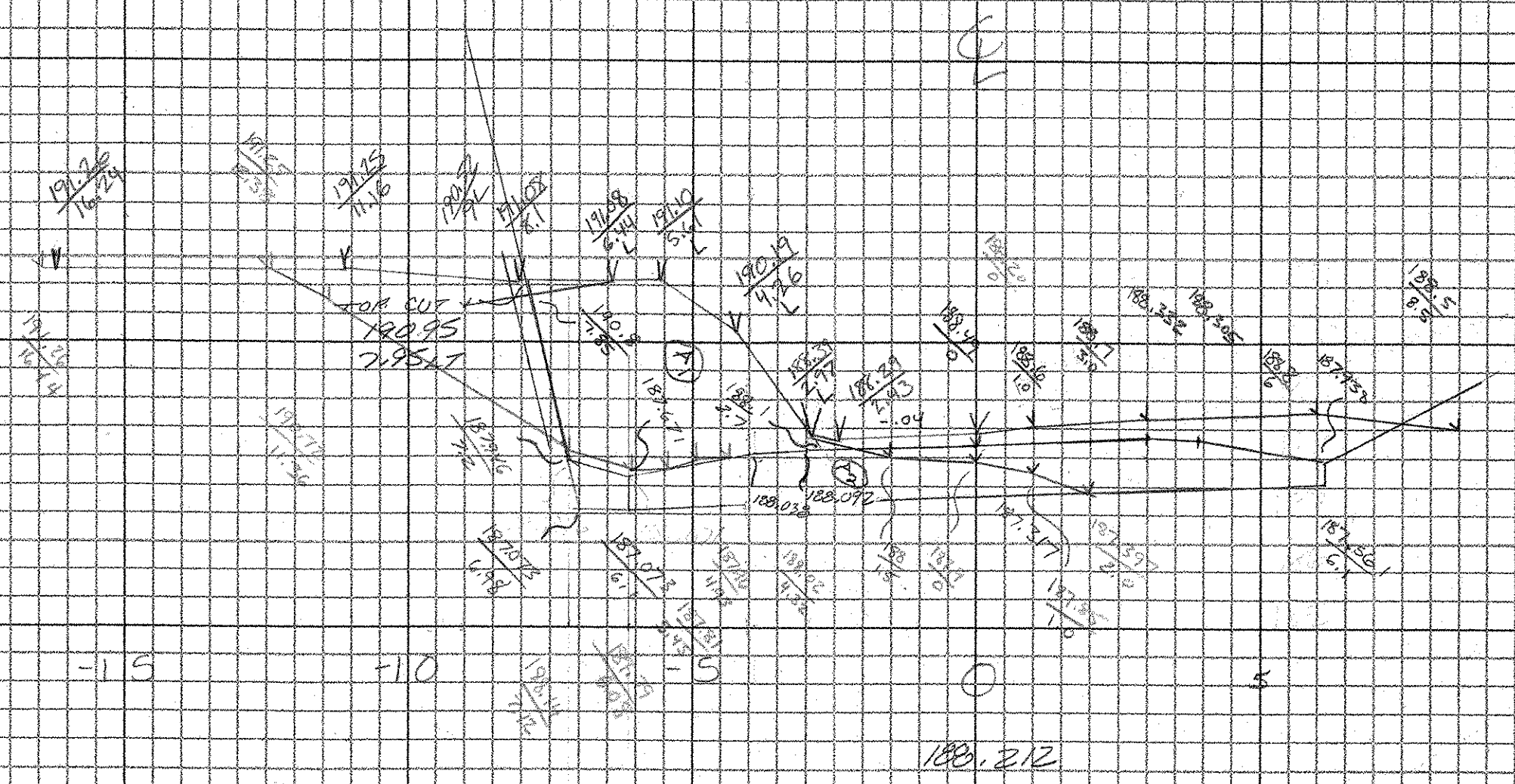
AREA = 12.275 sqm

AREA = 5.608 sqm

* 2000 Ledge For Area
@ 107667

EXTRA CUT AUTHORIZED BY D. BRECK

0.3m x 2.2m = 0.66 sqm



203.16 Solid Rock Exc.

-2.29	187.67	0	187.27	191
-2.0	187.645	-1.5	187.1	190
-1.9	187.591	-2.27	187.67	189
-6.1	187.224	-3	187.645	188
-6.1	187.662	-3.9	187.591	187
-6.79	187.605	-6.1	187.627	186
-7.2	187.477	-6.1	187.662	185
-8	187.074	0	186.836	
-6.9	187.84	4.5	187.0	
-6.55	187.32	5.5	187.1	
-3.95	187.27	2.0	187.2	
-2.88	187.85	1.0	187.53	
-2.08	187.86	0	187.27	
-2.29	187.67			

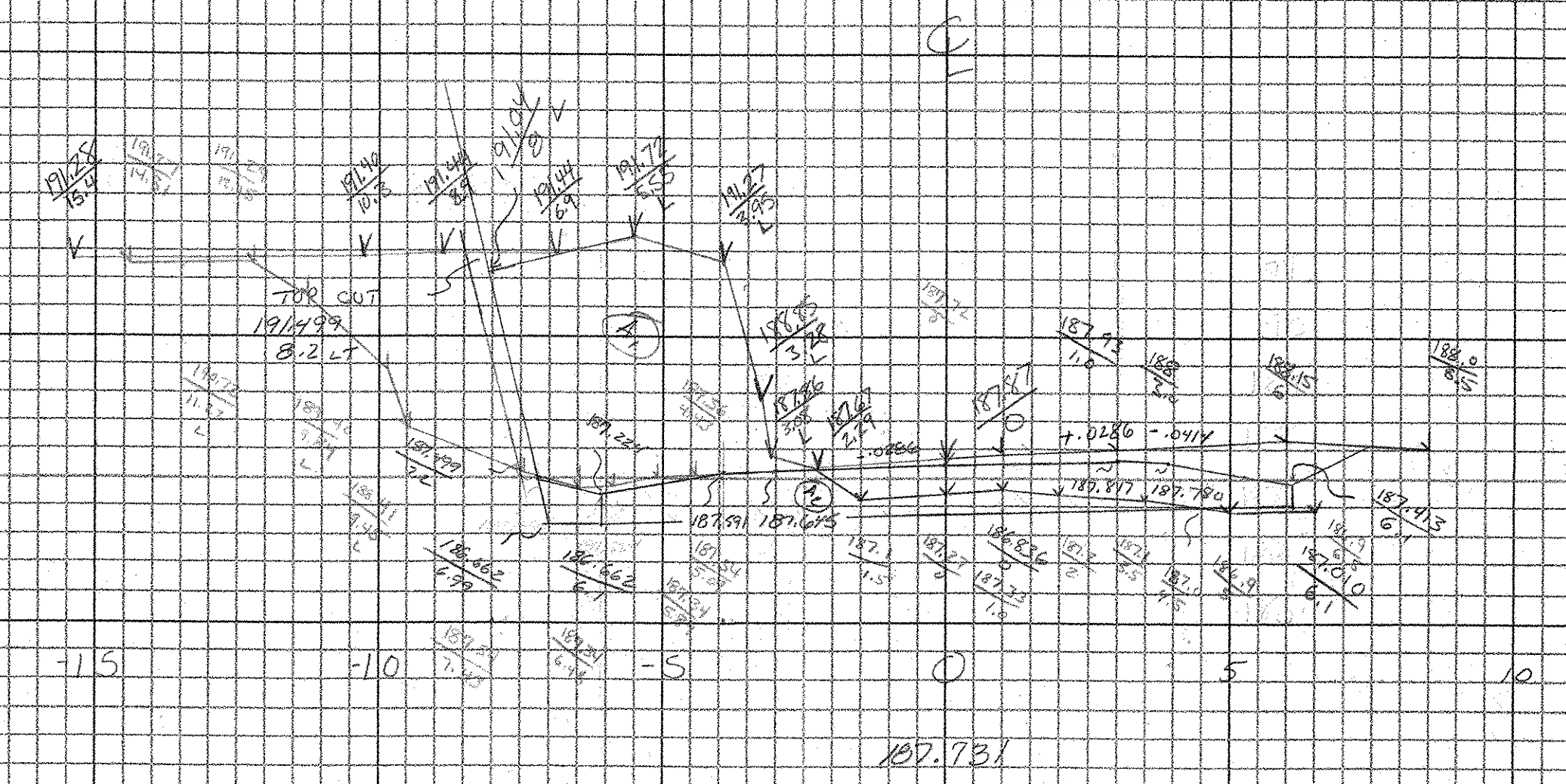
AREA = 17.513 sqm

AREA = 5.241 sqm

CHK
10/1/01

EXTRA CUT AUTHORIZED BY D. BRECK

0.3m x 4.0m = 1.2 sqm



Scale 1:100



CROSS SECTION SHEET

PROJECT NAME: Grafton - Rockingham
 PROJECT NUMBER: STP 0126(4) 1/2
 FILE NAME: Ledge (small cut) PLOT DATE: 07-JUN-2000 13:51
 PROJECT LEADER: _____ DRAWN BY: J. Smith
 DESIGNED BY: _____ CHECKED BY: SMITH
 const: g:/common/cadd/m-xsection.dgn SHEET 3 OF 4