

Drainage System # 25 IS

* USE 48.8 m = 160 FT
OF 600 mm RCP

122280 m RT

122280, 40m RT N 12040, 18m RT

204.20 TRENCH EXCAVATION OF EARTH

CATCH BASIN: SEC # 25A	PIPE
(Above 1.5m)	(Below 1.5m)
2.75 173.728	2.75 172.0
2.75 172.228	5.0 172.0
4.75 172.326	6.75 172.326
5.0 172.0	8.75 172.228
5.25 172.0	8.75 172.0
5.25 172.0	
4.25 172.025	
2.75 172.728	
$A_1 = 3.741 \text{ m} \times 2.5 \text{ m}$	$A_2 = 2.831 \text{ m} \times 1.5 \text{ m}$
$\text{Vol}_1 = 9.353 \text{ m}^3$	$\text{Vol}_2 = 4.247 \text{ m}^3$

STATION	ELEVATION OF PIPE	SUBGRADE	DEPTH	DISTANCE	(Above 1.5m)	(Below 1.5m)
(East) 0+000	172.228	172.728	1.50m	15.75m	25.625m	5.426m
0+000	170.9	173.025	2.125m	10	15.025m	4.025m
0+050	170.0	172.611	1.611m	10	13.425m	0.555m
(East) 0+040	169.1	172.352	1.252m	19.45m	14.081m	2.830m
(West) 1+040	168.19	172.126	1.936m	46.8m	66.784m	12.311m x 1.15m = 18.467m

204.21 TRENCH EXCAVATION OF RCP

600mm PRECAST REIN CONC CATCH BASIN

2.0m x 1.5m x 1.5m = 4.50 m³

2.0m x 1.5m x 1.2m = 3.60 m³

0.7m x 1.5m x 3.0m = 3.15 m³

6.15 m³

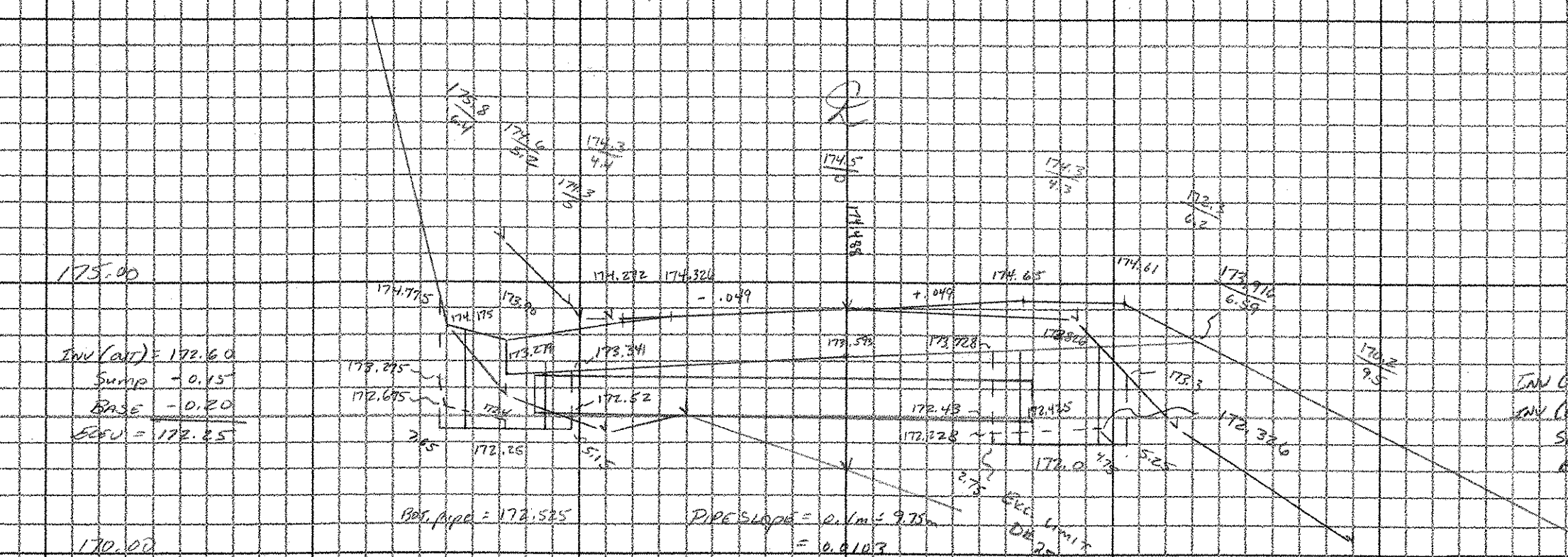
600mm PRECAST REIN CONC CATCH BASIN

204.20 TRENCH EXCAVATION OF EARTH

CATCH BASIN	PIPE
(Above 1.5m)	(Below 1.5m)
-2.75 174.725	-2.65 172.225
-2.65 172.225	-2.65 172.225
-2.5 172.225	-4.7 172.225
-4.7 172.4	-4.7 172.4
-4.7 172.25	-7.5 172.025
-5.15 172.25	-7.65 172.225
-5.15 172.5	
-5.4 172.9	
-2.5 174.725	
-2.65 174.725	
$A_1 = 1.888 \text{ m} \times 2.5 \text{ m}$	$A_2 = 1.425 \text{ m} \times 1.5 \text{ m} \times 2.5 \text{ m}$
$\text{Vol}_1 = 4.72 \text{ m}^3$	$\text{Vol}_2 = 1.574 \text{ m}^3$
TOTAL RCP = 6.314 m	

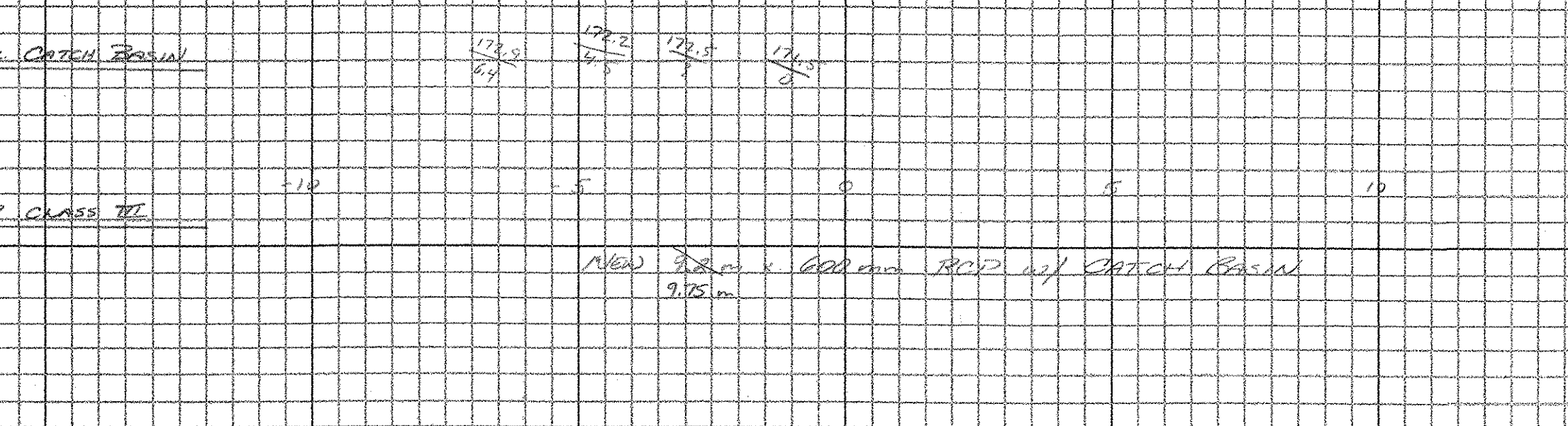
Drainage System # 25 IA

122280, 40m RT



204.20 TRENCH EXCAVATION OF EARTH

CATCH BASIN	PIPE
(Above 1.5m)	(Below 1.5m)
-2.5 174.175	-5.15 172.52
-4.4 172.90	-2.75 172.43
-5.15 172.50	-2.75 172.28
-5.15 172.341	0 172.593
-5.4 172.279	-5.15 172.341
-4.4 172.90	-5.15 172.52
-2.5 174.175	
$A_1 = 1.313 \text{ m} \times 2.5 \text{ m}$	$A_2 = 8.281 \text{ m} \times 1.75 \text{ m}$
$\text{Vol}_1 = 3.283 \text{ m}^3$	$\text{Vol}_2 = 14.49 \text{ m}^3$
TOTAL EARTH = 17.773 m	



CROSS SECTION SHEET

PROJECT NAME: GRAFTON - ROCKINGHAM
 PROJECT NUMBER: STP 0126 4(3) 0/2
 FILE NAME: DRAINAGE PLOT DATE: 07-JUN-2000 13:
 PROJECT LEADER: _____ DRAWN BY: C. GREENWOOD
 DESIGNED BY: _____ CHECKED BY: D. BRISER
 const: g:/common/cadd/m-xsection.dgn SHEET 20 OF 23