

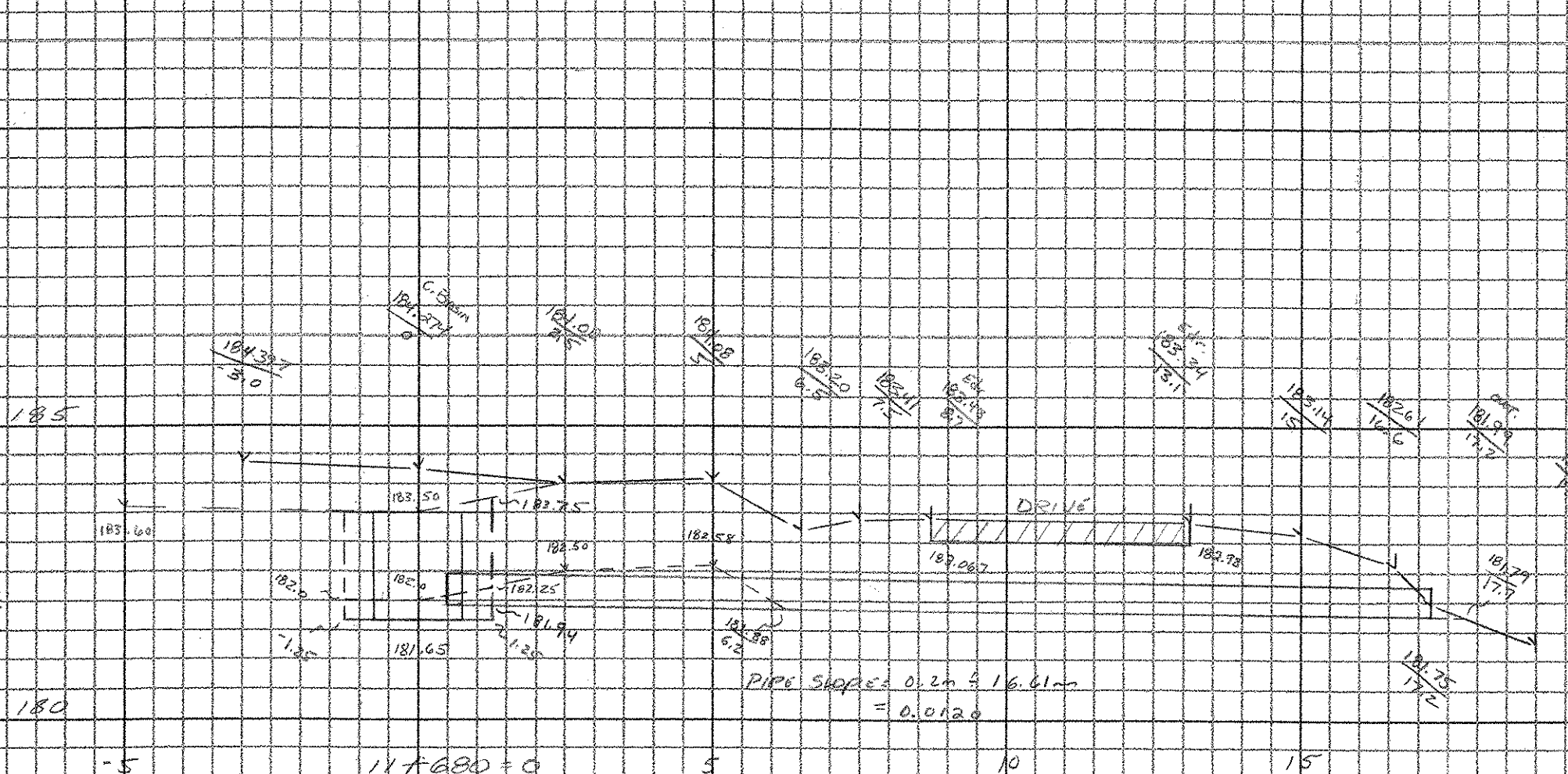
DRAINAGE SYSTEM #18

11+680, 6.5m LT ~ 11+697, 7.5m LT

204.20 TRENCH EXCAVATION OF FOOTING

CATCH BASIN (Above 1.5m)		PIPE (Above 1.5m)		Below 1.5m	
-1.25	182.00	-1.25	182.00	1.25	182.25
0	182.00	-1.25	182.00	1.25	182.25
1.25	182.00	1.25	182.00	1.25	182.25
2.5	182.00	2.5	182.00	1.25	182.25
3.75	182.00	3.75	182.00	1.25	182.25
5.0	182.00	5.0	182.00	1.25	182.25
6.25	182.00	6.25	182.00	1.25	182.25
7.5	182.00	7.5	182.00	1.25	182.25
8.75	182.00	8.75	182.00	1.25	182.25
10.0	182.00	10.0	182.00	1.25	182.25
11.25	182.00	11.25	182.00	1.25	182.25
12.5	182.00	12.5	182.00	1.25	182.25
13.75	182.00	13.75	182.00	1.25	182.25
15.0	182.00	15.0	182.00	1.25	182.25
16.25	182.00	16.25	182.00	1.25	182.25
17.5	182.00	17.5	182.00	1.25	182.25
18.75	182.00	18.75	182.00	1.25	182.25
20.0	182.00	20.0	182.00	1.25	182.25

CATCH BASIN (Below 1.5m)		PIPE (Below 1.5m)	
-1.25	182.00	1.25	182.25
0	182.00	1.25	182.25
1.25	182.00	1.25	182.25
2.5	182.00	1.25	182.25
3.75	182.00	1.25	182.25
5.0	182.00	1.25	182.25
6.25	182.00	1.25	182.25
7.5	182.00	1.25	182.25
8.75	182.00	1.25	182.25
10.0	182.00	1.25	182.25
11.25	182.00	1.25	182.25
12.5	182.00	1.25	182.25
13.75	182.00	1.25	182.25
15.0	182.00	1.25	182.25
16.25	182.00	1.25	182.25
17.5	182.00	1.25	182.25
18.75	182.00	1.25	182.25
20.0	182.00	1.25	182.25



601.0810 375mm RCP CLASS III
14.6/m (CENT IN FIELD)
10% 17.0m

204.20 PRECAST CONCRETE CATCH BASIN
1.50m

NEW 18" dia x 375mm RCP w/ PRECAST CATCH BASIN
17.0

DRAINAGE SYSTEM #19

11+688, 20m LT ~ 11+699, 24m LT

204.20 TRENCH EXCAVATION OF FOOTING

Above 1.5m		PIPE (Above 1.5m)		Below 1.5m	
-2.8	180.90	-5.8	179.21	8.2	179.25
-6.5	180.90	-5.8	179.21	8.2	179.25
-10.2	180.90	-5.8	179.21	8.2	179.25
-13.9	180.90	-5.8	179.21	8.2	179.25
-17.6	180.90	-5.8	179.21	8.2	179.25
-21.3	180.90	-5.8	179.21	8.2	179.25
-25.0	180.90	-5.8	179.21	8.2	179.25
-28.7	180.90	-5.8	179.21	8.2	179.25
-32.4	180.90	-5.8	179.21	8.2	179.25
-36.1	180.90	-5.8	179.21	8.2	179.25
-39.8	180.90	-5.8	179.21	8.2	179.25
-43.5	180.90	-5.8	179.21	8.2	179.25
-47.2	180.90	-5.8	179.21	8.2	179.25
-50.9	180.90	-5.8	179.21	8.2	179.25
-54.6	180.90	-5.8	179.21	8.2	179.25
-58.3	180.90	-5.8	179.21	8.2	179.25
-62.0	180.90	-5.8	179.21	8.2	179.25
-65.7	180.90	-5.8	179.21	8.2	179.25
-69.4	180.90	-5.8	179.21	8.2	179.25
-73.1	180.90	-5.8	179.21	8.2	179.25
-76.8	180.90	-5.8	179.21	8.2	179.25
-80.5	180.90	-5.8	179.21	8.2	179.25
-84.2	180.90	-5.8	179.21	8.2	179.25
-87.9	180.90	-5.8	179.21	8.2	179.25
-91.6	180.90	-5.8	179.21	8.2	179.25
-95.3	180.90	-5.8	179.21	8.2	179.25
-99.0	180.90	-5.8	179.21	8.2	179.25
-102.7	180.90	-5.8	179.21	8.2	179.25
-106.4	180.90	-5.8	179.21	8.2	179.25
-110.1	180.90	-5.8	179.21	8.2	179.25
-113.8	180.90	-5.8	179.21	8.2	179.25
-117.5	180.90	-5.8	179.21	8.2	179.25
-121.2	180.90	-5.8	179.21	8.2	179.25
-124.9	180.90	-5.8	179.21	8.2	179.25
-128.6	180.90	-5.8	179.21	8.2	179.25
-132.3	180.90	-5.8	179.21	8.2	179.25
-136.0	180.90	-5.8	179.21	8.2	179.25
-139.7	180.90	-5.8	179.21	8.2	179.25
-143.4	180.90	-5.8	179.21	8.2	179.25
-147.1	180.90	-5.8	179.21	8.2	179.25
-150.8	180.90	-5.8	179.21	8.2	179.25
-154.5	180.90	-5.8	179.21	8.2	179.25
-158.2	180.90	-5.8	179.21	8.2	179.25
-161.9	180.90	-5.8	179.21	8.2	179.25
-165.6	180.90	-5.8	179.21	8.2	179.25
-169.3	180.90	-5.8	179.21	8.2	179.25
-173.0	180.90	-5.8	179.21	8.2	179.25
-176.7	180.90	-5.8	179.21	8.2	179.25
-180.4	180.90	-5.8	179.21	8.2	179.25
-184.1	180.90	-5.8	179.21	8.2	179.25
-187.8	180.90	-5.8	179.21	8.2	179.25
-191.5	180.90	-5.8	179.21	8.2	179.25
-195.2	180.90	-5.8	179.21	8.2	179.25
-198.9	180.90	-5.8	179.21	8.2	179.25
-202.6	180.90	-5.8	179.21	8.2	179.25
-206.3	180.90	-5.8	179.21	8.2	179.25
-210.0	180.90	-5.8	179.21	8.2	179.25
-213.7	180.90	-5.8	179.21	8.2	179.25
-217.4	180.90	-5.8	179.21	8.2	179.25
-221.1	180.90	-5.8	179.21	8.2	179.25
-224.8	180.90	-5.8	179.21	8.2	179.25
-228.5	180.90	-5.8	179.21	8.2	179.25
-232.2	180.90	-5.8	179.21	8.2	179.25
-235.9	180.90	-5.8	179.21	8.2	179.25
-239.6	180.90	-5.8	179.21	8.2	179.25
-243.3	180.90	-5.8	179.21	8.2	179.25
-247.0	180.90	-5.8	179.21	8.2	179.25
-250.7	180.90	-5.8	179.21	8.2	179.25
-254.4	180.90	-5.8	179.21	8.2	179.25
-258.1	180.90	-5.8	179.21	8.2	179.25
-261.8	180.90	-5.8	179.21	8.2	179.25
-265.5	180.90	-5.8	179.21	8.2	179.25
-269.2	180.90	-5.8	179.21	8.2	179.25
-272.9	180.90	-5.8	179.21	8.2	179.25
-276.6	180.90	-5.8	179.21	8.2	179.25
-280.3	180.90	-5.8	179.21	8.2	179.25
-284.0	180.90	-5.8	179.21	8.2	179.25
-287.7	180.90	-5.8	179.21	8.2	179.25
-291.4	180.90	-5.8	179.21	8.2	179.25
-295.1	180.90	-5.8	179.21	8.2	179.25
-298.8	180.90	-5.8	179.21	8.2	179.25
-302.5	180.90	-5.8	179.21	8.2	179.25
-306.2	180.90	-5.8	179.21	8.2	179.25
-309.9	180.90	-5.8	179.21	8.2	179.25
-313.6	180.90	-5.8	179.21	8.2	179.25
-317.3	180.90	-5.8	179.21	8.2	179.25
-321.0	180.90	-5.8	179.21	8.2	179.25
-324.7	180.90	-5.8	179.21	8.2	179.25
-328.4	180.90	-5.8	179.21	8.2	179.25
-332.1	180.90	-5.8	179.21	8.2	179.25
-335.8	180.90	-5.8	179.21	8.2	179.25
-339.5	180.90	-5.8	179.21	8.2	179.25
-343.2	180.90	-5.8	179.21	8.2	179.25
-346.9	180.90	-5.8	179.21	8.2	179.25
-350.6	180.90	-5.8	179.21	8.2	179.25
-354.3	180.90	-5.8	179.21	8.2	179.25
-358.0	180.90	-5.8	179.21	8.2	179.25
-361.7	180.90	-5.8	179.21	8.2	179.25
-365.4	180.90	-5.8	179.21	8.2	179.25
-369.1	180.90	-5.8	179.21	8.2	179.25
-372.8	180.90	-5.8	179.21	8.2	179.25
-376.5	180.90	-5.8	179.21	8.2	179.25
-380.2	180.90	-5.8	179.21	8.2	179.25
-383.9	180.90	-5.8	179.21	8.2	179.25
-387.6	180.90	-5.8	179.21	8.2	179.25
-391.3	180.90	-5.8	179.21	8.2	179.25
-395.0	180.90	-5.8	179.21	8.2	179.25
-398.7	180.90	-5.8	179.21	8.2	179.25
-402.4	180.90	-5.8	179.21	8.2	179.25
-406.1	180.90	-5.8	179.21	8.2	179.25
-409.8	180.90	-5.8	179.21	8.2	179.25
-413.5	180.90	-5.8	179.21	8.2	179.25
-417.2	180.90	-5.8	179.21	8.2	179.25
-420.9	180.90	-5.8	179.21	8.2	179.25
-424.6	180.90	-5.8	179.21	8.2	179.25
-428.3	180.90	-5.8	179.21	8.2	179.25
-432.0	180.90	-5.8	179.21	8.2	179.25
-435.7	180.90	-5.8	179.21	8.2	179.25
-439.4	180.90	-5.8	179.21	8.2	179.25
-443.1	180.90	-5.8	179.21	8.2	179.25
-446.8	180.90	-5.8	179.21	8.2	179.25
-450.5	180.90	-5.8	179.21	8.2	179.25
-454.2	180.90	-5.8	179.21	8.2	179.25
-457.9	180.90	-5.8	179.21	8.2	179.25
-461.6	180.90	-5.8	179.21	8.2	179.25
-465.3	180.90	-5.8	179.21	8.2	179.25
-469.0	180.90	-5.8	179.21	8.2	179.25
-472.7	180.90	-5.8	179.21	8.2	179.25
-476.4	180.90	-5.8	179.21	8.2	179.25
-480.1	180.90	-5.8	179.21	8.2	179.25
-483.8	180.90	-5.8	179.21	8.2	179.25
-487.5	180.90	-5.8	179.21	8.2	179.25
-491.2	180.90	-5.8	179.21	8.2	179.25
-494.9	180.90	-5.8	179.21	8.2	179.25
-498.6	180.90	-5.8	179.21	8.2	179.25
-502.3	180.90	-5.8	179.21	8.2	179.25
-506.0	180.90	-5.8	179.21	8.2	179.25
-509.7	180.90	-5.8	179.21	8.2	179.25
-513.4	180.90	-5.8	179.21	8.2	179.25
-517.1	180.90	-5.8	179.21	8.2	179.25
-520.8	180.90	-5.8	179.21	8.2	179.25
-524.5	180.90	-5.8	179.21	8.2	179.25
-528.2	180.90	-5.8	179.21	8.2	179.25
-531.9	180.90	-5.8	179.21	8.2	179.25
-535.6	180.90	-5.8	179.21	8.2	179.25
-539.3	180.90	-5.8	179.21	8.2	179.25
-543.0	180.90	-5.8	179.21	8.2	179.25
-546.7	180.90	-5.8	179.21	8.2	179.25
-550.4	180.90	-5.8	179.21	8.2	179.25
-554.1	180.90				