

601.2620 600 mm CRCP (SL)

18.6m

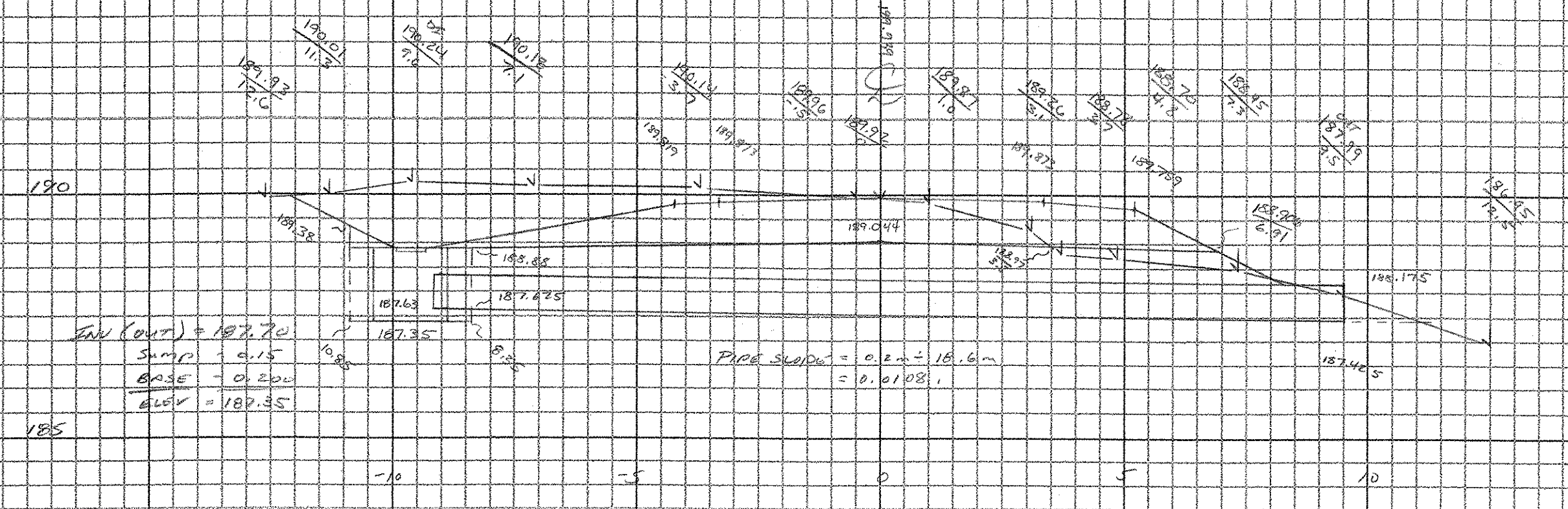
204.25 TRENCH EXCAVATION OF EAST

CATCH BASIN:		PIPE:	
-10.85	187.85	-9.25	187.85
-8.35	187.85	7.5	187.485
-6.35	188.185	9.5	187.99
-4.9	188.190	7.3	188.45
-10.85	189.138	4.8	188.90
-10.85	187.35	3.7	188.98
		3.5	188.97
		0	189.044
		-2.35	188.88
		-2.5	187.65

$A_1 = 4.088 \text{ m}$
 $A_2 = 22.946 \text{ m}$
 $Vol_1 = 4.088 \times 2.5 \text{ m} = 10.22 \text{ m}^3$
 $Vol_2 = 22.946 \times 1.75 \text{ m} = 40.156 \text{ m}^3$
TOTAL = 50.376 m³
 $11.85 \text{ m} \times 7.20 \text{ m} = 85.32 \text{ m}^2$
 38.52 m^2

DRAINAGE SYSTEM #15

117320, 2.6m RT ~ 117370, 9.5m RT



204.21 TRENCH EXCAVATION OF ROAD

(10.8m + 1.5m) x 2.2m x 1.0m = 11.85 m³

604.20 PRECAST RUM CONC CATCH BASIN

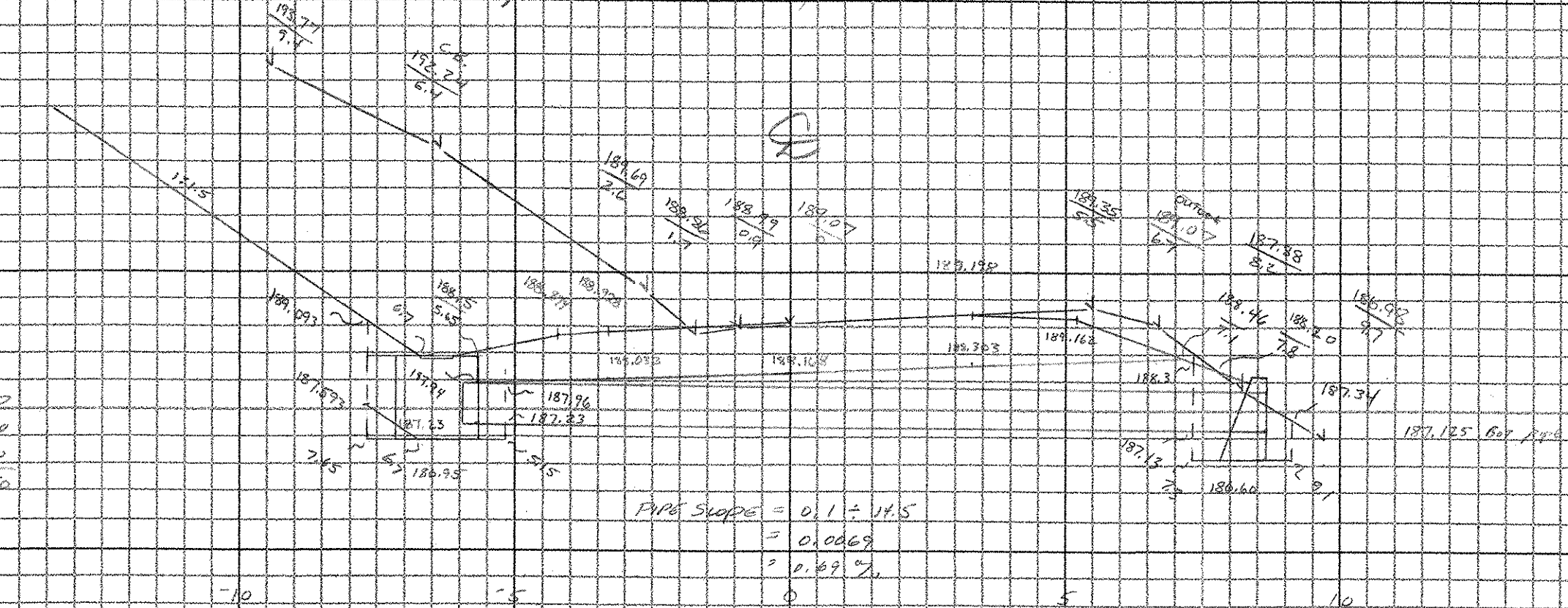
18.6m

DRAINAGE SYSTEM #16A

117552, 6.7m RT ~ 117572, 6.7m RT

CATCH BASIN:		PIPE:		H.W.:	
-7.65	187.573	-5.15	187.83	7.5	188.60
-6.7	186.95	7.5	187.13	9.1	188.60
-5.15	186.95	7.3	188.3	9.1	187.37
-5.15	182.96	-6.7	186.95	8.2	187.88
-5.15	182.96	0	186.165	7.8	188.20
-5.15	187.94	-5.15	187.96	7.3	188.3
-5.65	187.55	-5.15	187.23	7.3	186.16
-6.1	188.46				
-6.7	188.46				
-2.65	188.623				
-2.65	182.592				

$A_1 = 3.524 \text{ m}$
 $A_2 = 2.31 \text{ m}$
 $Vol_1 = 3.524 \times 2.5 \text{ m} = 8.81 \text{ m}^3$
 $Vol_2 = 2.31 \times 2.8 \text{ m} = 6.468 \text{ m}^3$
TOTAL = 15.278 m³
 $12.84 \text{ m} \times 1.75 \text{ m} = 22.47 \text{ m}^2$
 $2.31 \text{ m} \times 2.8 \text{ m} = 6.468 \text{ m}^2$
 $12.84 \text{ m} \times 2.2 \text{ m} = 28.248 \text{ m}^2$
 $2.31 \text{ m} \times 2.8 \text{ m} = 6.468 \text{ m}^2$
 $12.84 \text{ m} \times 2.2 \text{ m} = 28.248 \text{ m}^2$
 $2.31 \text{ m} \times 2.8 \text{ m} = 6.468 \text{ m}^2$



601.2620 600 mm CRCP (SL)

14.5m

604.20 PRECAST RUM CONC CATCH BASIN

18.6m

501.55 CONCRETE, CLASS 18

20 cm

501.55 REIN. STEEL

4# 21m = 84m x 1.535 kg/m = 128.66 kg



CROSS SECTION SHEET

PROJECT NAME: GRAFTON - ROCKINGHAM
 PROJECT NUMBER: STP 0126 4(a) C12
 FILE NAME: _____ PLOT DATE: 07-JUN-2000 13:
 PROJECT LEADER: _____ DRAWN BY: C. GREENWOOD
 DESIGNED BY: _____ CHECKED BY: D. BREER
 const: g:/common/cadd/m-xsection.dgn SHEET 13 OF 23