

**604.00 TRENCH EXCAVATION OF GRENTH**

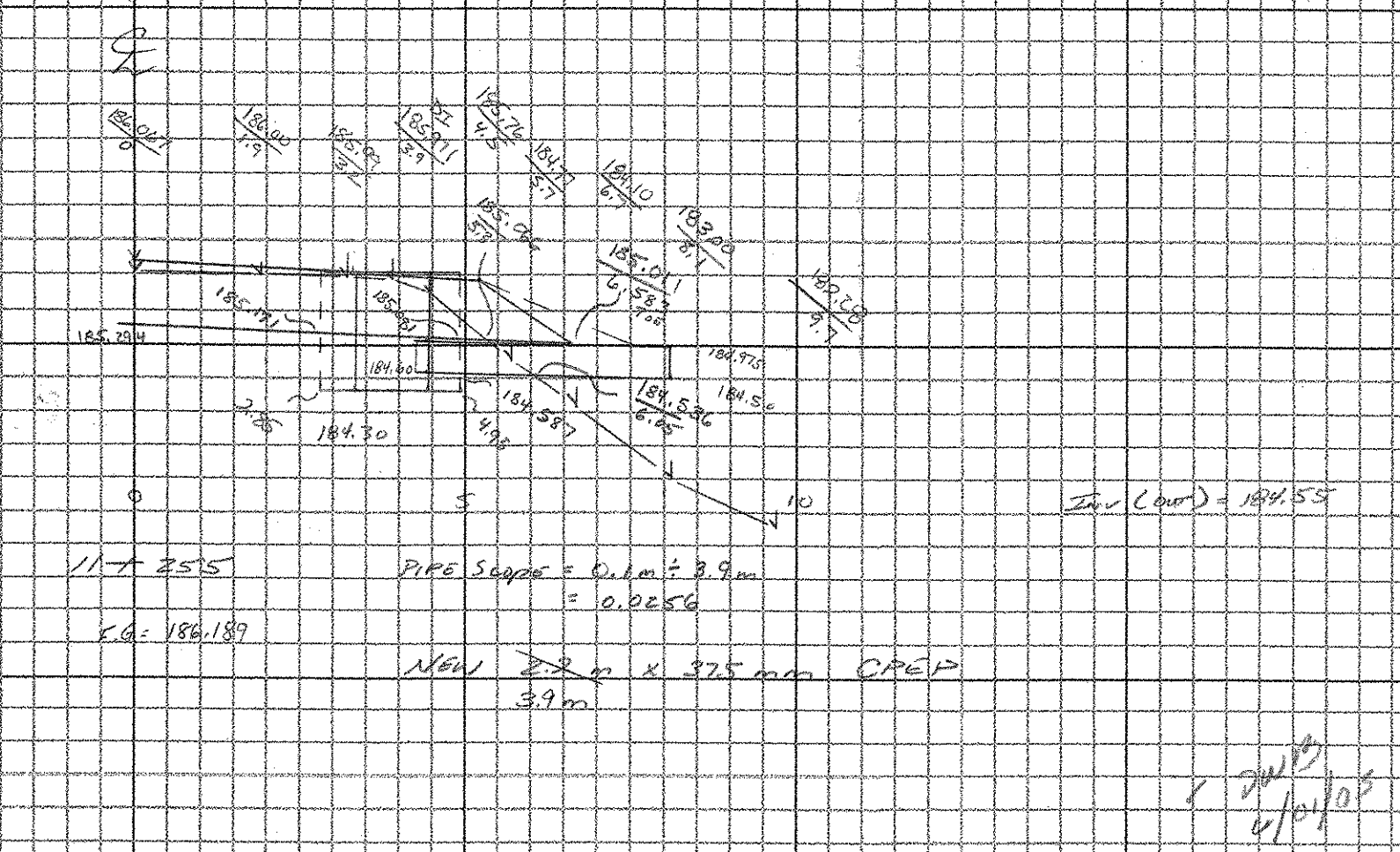
DE	TIME
2.85 184.30	4.95 184.567
4.95 184.30	6.05 184.536
4.95 185.081	5.7 184.77
2.85 185.171	5.8 185.066
2.85 184.30	4.95 185.081
4.95 184.567	4.95 184.567

$A_1 = 1.735 \text{ m}^2$   
 $A_2 = 0.357 \text{ m}^2$   
 $V_1 = 1.735 \text{ m} \times 2.1 = 3.644 \text{ m}^3$   
 $V_2 = 0.357 \text{ m} \times 1.47 \text{ m} = 0.525 \text{ m}^3$   
**TOTAL = 4.169 m<sup>3</sup>**

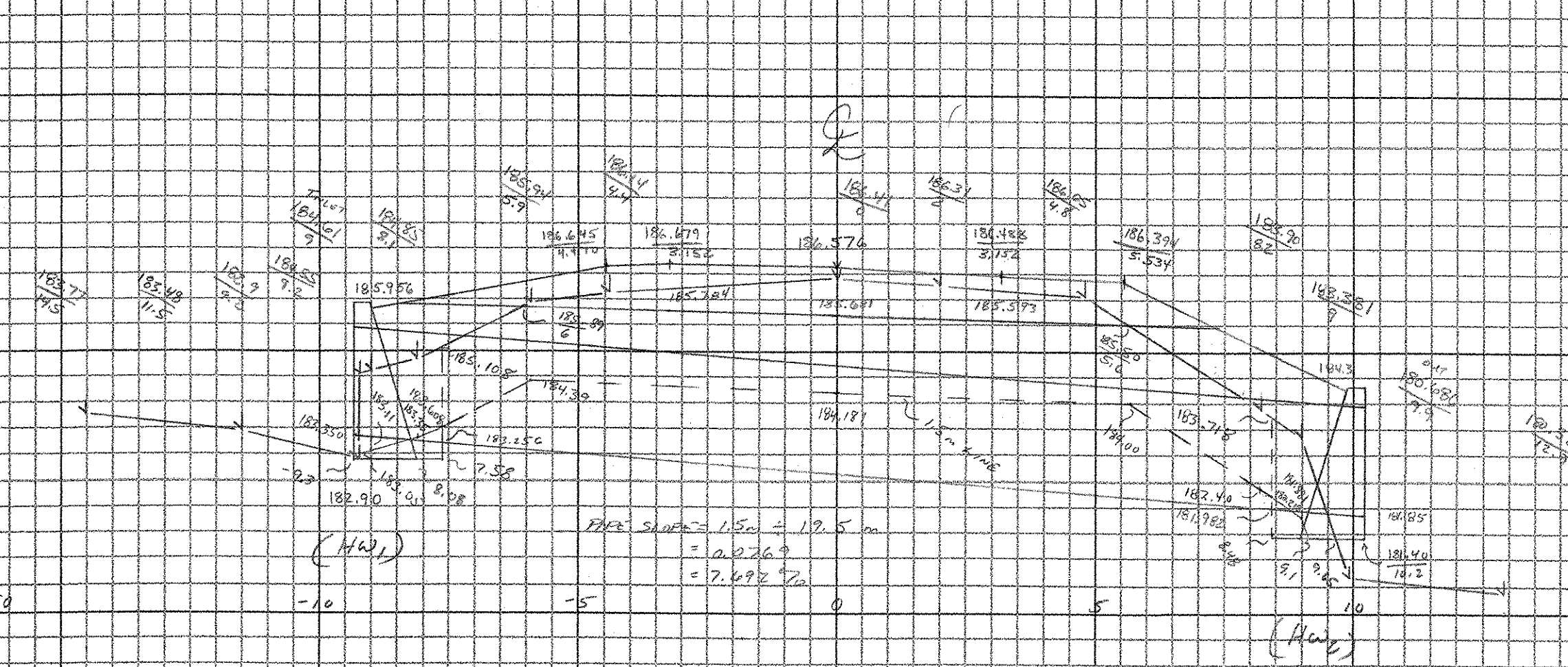
**601.2610 375 mm COPD (S.S.)**  
 3.9 m

**604.25 AND DRAIN DROP INLET**  
 1.6m

**DRAINAGE SYSTEM #14A**  
 11+255 3.9 RT ~ 11+255 6.7 m RT



**DRAINAGE SYSTEM #14**  
 11+277 8.5 RT ~ 11+285.5 9.3 RT



613.10 STONE FILL TYPE I  
 1.0m BY C. GREENWOOD

619.31 G.O. UNDER STONE

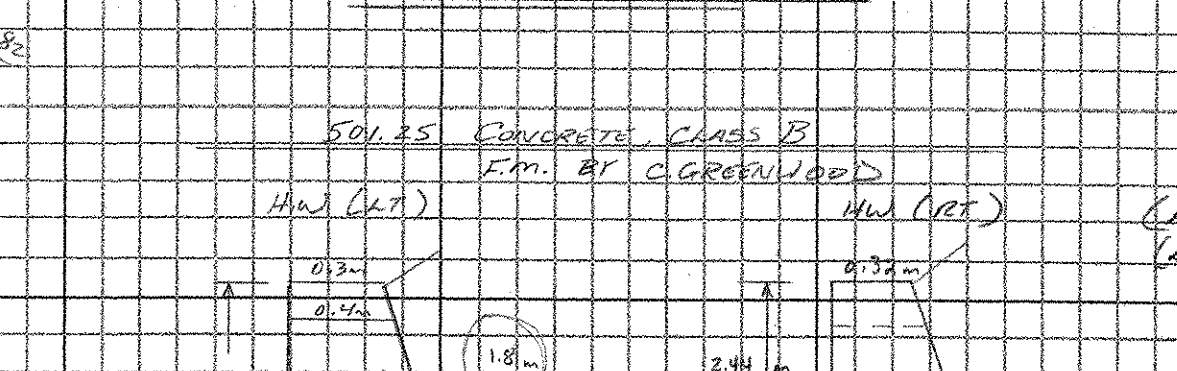
1.5m x 5.5m = 8.25 m<sup>2</sup>

TAN 69.881 = 3.3 x <sub>1</sub> = 1.262 m	TAN 69.881 = 4.2 x <sub>2</sub> = 1.534 m
SIN 69.881 = 3.3 y <sub>1</sub> = 2.512 m	SIN 69.881 = 4.2 y <sub>2</sub> = 4.470 m
TAN 69.981 = 3.3 x <sub>3</sub> = 1.295 m	
SIN 69.981 = 5.2 x <sub>3</sub> = 5.534 m	

**601.087.0 1800 mm RCP, CLASS III**  
 19.5 m

DEPTH	TIME
-0.2 182.90	-0.1 182.55
-2.58 182.90	-0.1 182.11
-2.88 182.68	-0.1 181.35
-5.1 183.55	-2.58 181.60
-7 183.11	-2.58 181.10
-9.2 184.05	-0.1 180.25
-9.2 182.90	-7 180.11
	-9.2 180.25
	-9.2 183.05

$A_1 = 0.624 \text{ m}^2$   
 $A_2 = 2.430 \text{ m}^2$   
 $V_1 = 0.624 \text{ m} \times 8.3 = 5.189 \text{ m}^3$   
 $V_2 = 2.430 \text{ m} \times 8.2 = 19.926 \text{ m}^3$   
**TOTAL = 25.115 m<sup>3</sup>**



**SOLES CONCRETE CLASS B**  
 1.0m BY C. GREENWOOD

$(0.3m \times 1.2m) \times 2.7m \times 2.31m = 14.803 \text{ m}^3$   
 $0.38m \times 1.2m \times 7.31m = 3.375 \text{ m}^3$   
**TOTAL = 18.178 m<sup>3</sup>**

**SOLES FORM STEEL**  
 1.0m BY C. GREENWOOD  
 (RT) 2.7m x 1.53m x 2.31m = 9.42 m<sup>2</sup>  
 (LT) 2.7m x 1.53m x 2.31m = 9.42 m<sup>2</sup>  
**TOTAL = 18.84 m<sup>2</sup>**

**613.11 STONE FILL TYPE I**  
 1.0m BY C. GREENWOOD  
 (RT) 2.7m x 2.6m x 2.31m = 16.2 m<sup>3</sup>  
 (LT) 2.7m x 2.6m x 2.31m = 16.2 m<sup>3</sup>  
**TOTAL = 32.4 m<sup>3</sup>**

**619.31 G.O. UNDER STONE FILL**  
 (RT) 2.7m x 2.6m x 2.31m = 16.2 m<sup>3</sup>  
 (LT) 2.7m x 2.6m x 2.31m = 16.2 m<sup>3</sup>  
**TOTAL = 32.4 m<sup>3</sup>**



**CROSS SECTION SHEET**

PROJECT NAME: GRAFTON - ROCKINGHAM  
 PROJECT NUMBER: STP 0126 4(S) 0/2  
 FILE NAME: \_\_\_\_\_ PLOT DATE: 07-JUN-2000 13:  
 PROJECT LEADER: \_\_\_\_\_ DRAWN BY: C. GREENWOOD  
 DESIGNED BY: \_\_\_\_\_ CHECKED BY: D. BEECH  
 const: g:/common/cadd/m-xsection.dgn SHEET 12 OF 23