

DRAINAGE SYSTEM # 5

10+459, 3.6m RT ~ 10+476, 3.6m RT

604.20 PRECAST CONC. CATCH BASIN

1.6m

204.20 TRENCH EXCAVATION OF EARTH

CRACK BASIN	PIPE
-1.4 178.23	1.4 178.618
1.4 178.23	15.75 178.522
1.4 178.475	15.75 178.467
0 178.476	1.4 178.475
-1.4 178.486	1.4 178.618
-1.4 178.230	

$A_1 = 8.495 \text{ m}^2$   
 $V_{A1} = 8.495 \text{ m} \times 2.8 \text{ m} = 23.786 \text{ m}^3$   
 $A_2 = 12.642 \text{ m}^2 \times 1.54 \text{ m}$   
 $V_{A2} = 19.468 \text{ m}^3$   
**TOTAL = 29.255 m<sup>3</sup>**

SW (cont) 178.88  
 Sump = 0.150  
 BSS = 0.300  
 BSL = 178.830

10+459 = 0  
 3.6m RT

Pave slope: 0.00m ± 16.0m  
 = 0.00375%  
 = 0.075 Pa

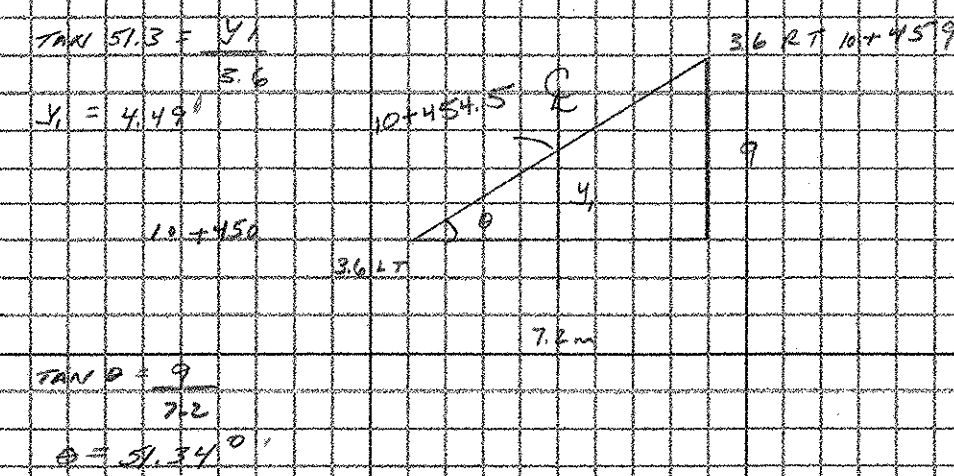
10+476 = 17  
 3.6m RT

SW (cont) 178.53  
 Sump = 0.150  
 BSS = 0.240  
 BSL = 178.18

601.0815 450 mm RCP, CLASS III

1.6.0m

NEW TRENCH 450 mm RCP w/ PRECAST CONCR. BASIN 16.0m



DRAINAGE SYSTEM # 5A

10+450, 3.6m LT ~ 10+457, 3.6m RT

204.20 TRENCH EXCAVATION OF EARTH

CRACK BASIN	PIPE
-7.61 178.45	4.51 178.784
-4.51 178.45	4.51 178.786
-4.51 178.593	4.51 178.787
-5.76 178.596	0 178.581
-7.61 178.599	-4.51 178.593
-7.01 178.45	-4.51 178.734

$A_1 = 2.864 \text{ m}^2$   
 $V_{A1} = 2.864 \text{ m} \times 2.5 \text{ m} = 7.163 \text{ m}^3$   
 $A_2 = 7.608 \text{ m}^2$   
 $V_{A2} = 7.608 \text{ m} \times 1.54 \text{ m} = 11.716 \text{ m}^3$   
**TOTAL = 20.945 m<sup>3</sup>**

204.30 GRANULAR BACKFILL FOR STRUCTURE 1

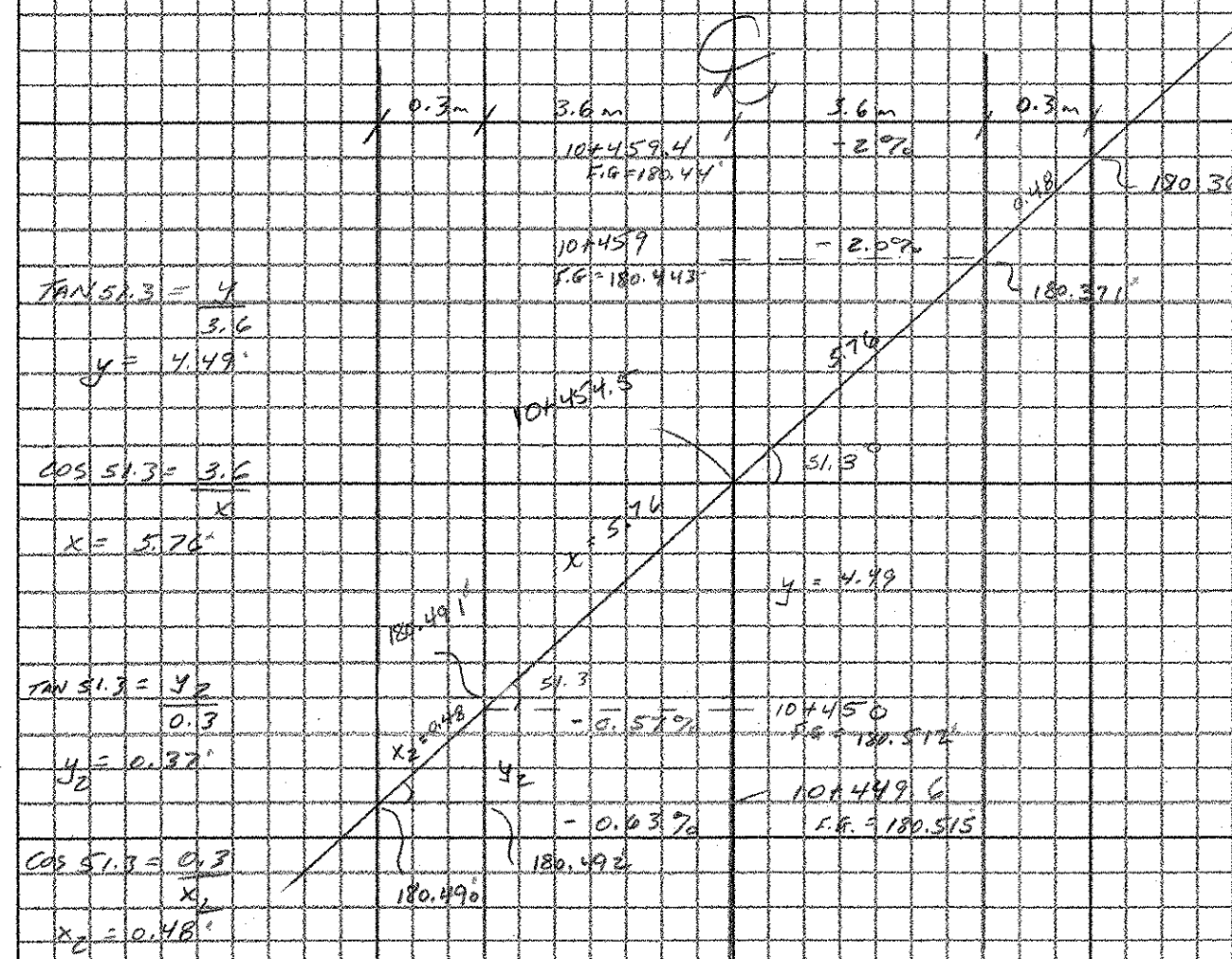
1.6m x 1.6m x 1.45m = 3.68 m<sup>3</sup>  
 601.0815 450 mm RCP, CLASS III  
 11.0m

604.20 PRECAST CONCRETE CATCH BASIN

1.6m

SW BY C. GREENWOOD (UNDERLAIN)  
 (0.15m x 91.5m x 1.45m) = 2.066 m<sup>3</sup>

TOTAL = 20.945 m<sup>3</sup>



SW (cont) 178.80  
 Sump = 0.15  
 BSS = 0.20  
 BSL = 178.45

NEW TRENCH 450 mm RCP 11.0m

Date 1/20/02  
 H-26109



CROSS SECTION SHEET

PROJECT NAME: GRAFTON - ROCKINGHAM  
 PROJECT NUMBER: STP 0126 4(S) 2/2  
 FILE NAME: \_\_\_\_\_ PLOT DATE: 07-JUN-2000 13:  
 PROJECT LEADER: \_\_\_\_\_ DRAWN BY: C. GREENWOOD  
 DESIGNED BY: \_\_\_\_\_ CHECKED BY: \_\_\_\_\_  
 const: g:/common/cadd/m-xsection.dgn SHEET 6 OF 23

127 DRAW