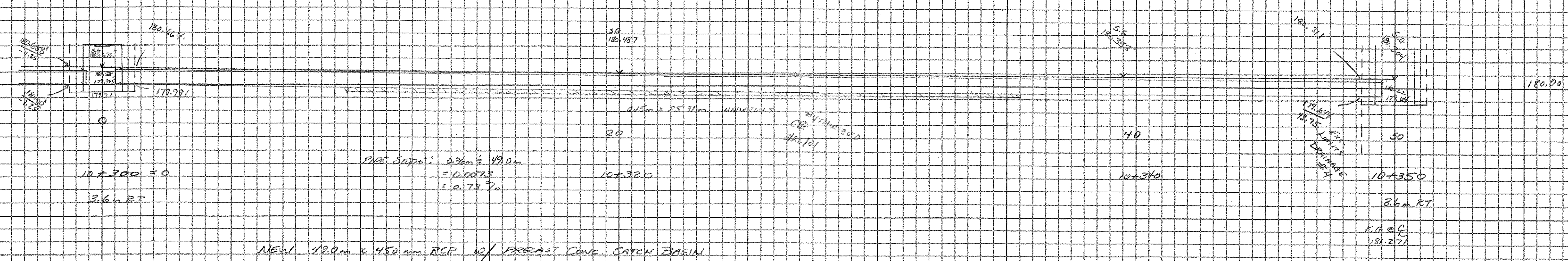


**DRAINAGE SYSTEM # 5**  
 10+300, 3.6m RT ~ 10+350, 5.6m RT

**20+20 TRENCH EXCAVATION OF EARTH**

CATCH BASIN		FILES	
0	179.71	1.25	179.71
1.25	179.71	2.5	179.644
2.5	180.676	3.75	180.311
3.75	180.676	5.0	180.387
5.0	180.676	6.25	180.664
6.25	179.71	7.5	179.71

$A_1 = 23.15 \text{ m}^2$       $A_2 = 30.830 \text{ m}^2$   
 $Vol_1 = 2.415 \text{ m} \times 2.5 \text{ m} = 6.038 \text{ m}^3$   
 $Vol_2 = 30.830 \text{ m} \times 1.54 \text{ m} = 47.487 \text{ m}^3$   
 TOTAL = 53.525 m<sup>3</sup>



**20+20 GRANULAR BACKFILL FOR STRUCTURES**

CATCH BASIN		FILES	
0	179.71	1.25	179.71
1.25	179.71	2.5	179.644
2.5	180.676	3.75	180.311
3.75	180.676	5.0	180.387
5.0	180.676	6.25	180.664
6.25	179.71	7.5	179.71

$A_1 = 23.15 \text{ m}^2$       $A_2 = 30.830 \text{ m}^2$   
 $Vol_1 = 2.415 \text{ m} \times 2.5 \text{ m} = 6.038 \text{ m}^3$   
 $Vol_2 = 30.830 \text{ m} \times 1.54 \text{ m} = 47.487 \text{ m}^3$   
 TOTAL = 53.525 m<sup>3</sup>

**60+02.5 450mm RCP CLASS III**

79.0m

**60+20 PRECAST CONCRETE CATCH BASIN**

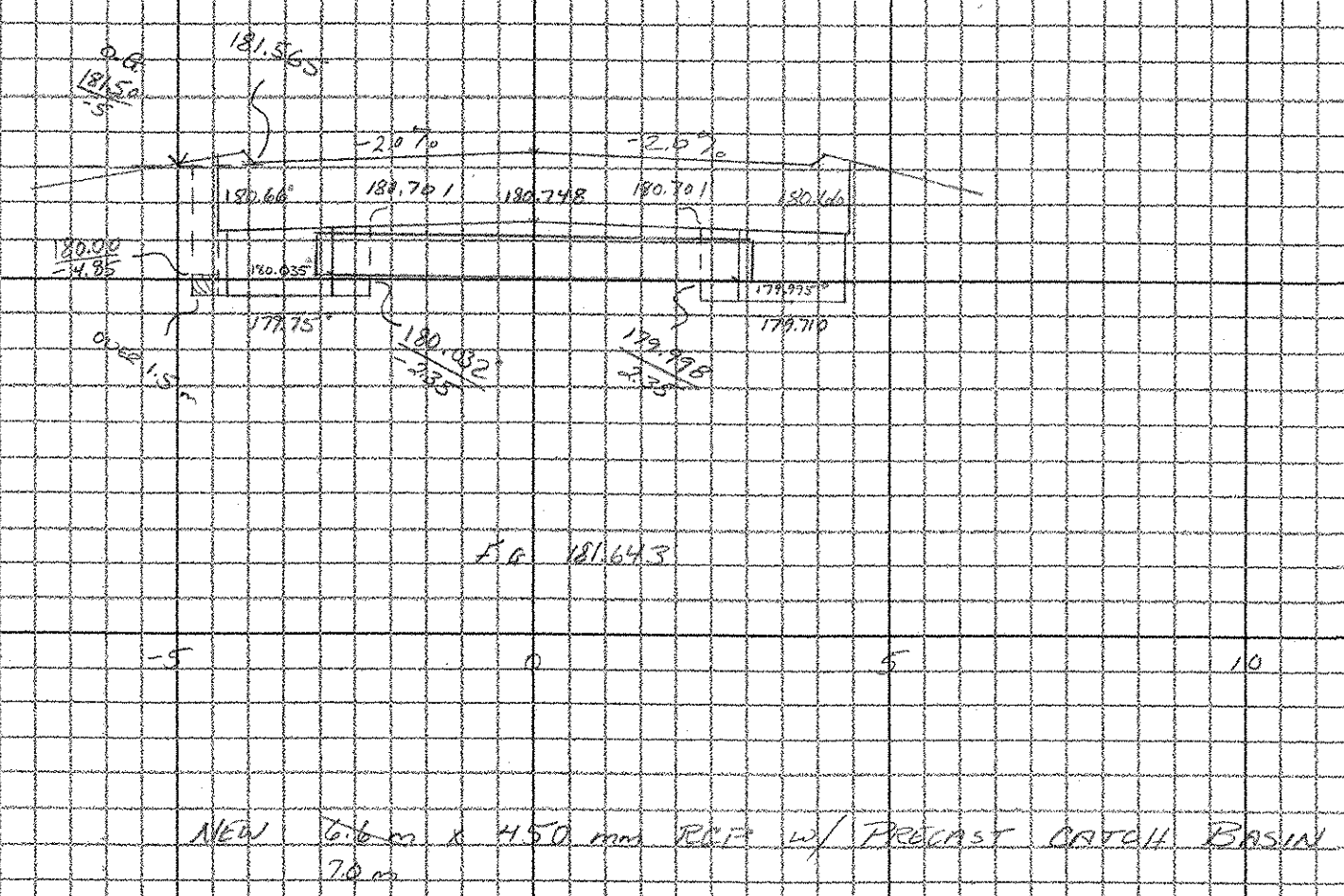
1.0m

**DRAINAGE SYSTEM # 2**  
 10+300, 3.6m RT ~ 10+300, 3.6m RT

**20+20 TRENCH EXCAVATION OF EARTH**

CATCH BASIN		FILES	
0	179.75	2.35	180.034
2.35	180.034	3.35	179.794
3.35	180.701	4.4	180.701
4.4	180.676	5.4	180.748
5.4	181.510	6.35	180.741
6.35	180.010	7.35	180.032
7.35	180.010	8.4	179.75
8.4	179.75	9.4	179.75
9.4	179.75	10.4	179.75

$A_1 = 2.55 \text{ m}^2$       $A_2 = 2.406 \text{ m}^2$   
 $Vol_1 = 2.335 \text{ m} \times 1.54 \text{ m} = 3.596 \text{ m}^3$   
 $Vol_2 = 2.55 \text{ m} \times 1.54 \text{ m} = 3.927 \text{ m}^3$   
 TOTAL = 7.523 m<sup>3</sup>



**60+20 PRECAST CONCRETE CATCH BASIN**

1.0m

**60+20 PRECAST CONCRETE CATCH BASIN**

1.0m



# CROSS SECTION SHEET

PROJECT NAME: GREYTON - ROCKINGHAM  
 PROJECT NUMBER: STP 0126 4(S) 9/2  
 FILE NAME: \_\_\_\_\_ PLOT DATE: 07-JUN-2000 13:  
 PROJECT LEADER: \_\_\_\_\_ DRAWN BY: C. GREENWOOD  
 DESIGNED BY: \_\_\_\_\_ CHECKED BY: \_\_\_\_\_  
 const: g:/common/cadd/m-xsection.dgn SHEET 3 OF 23

124 02/07