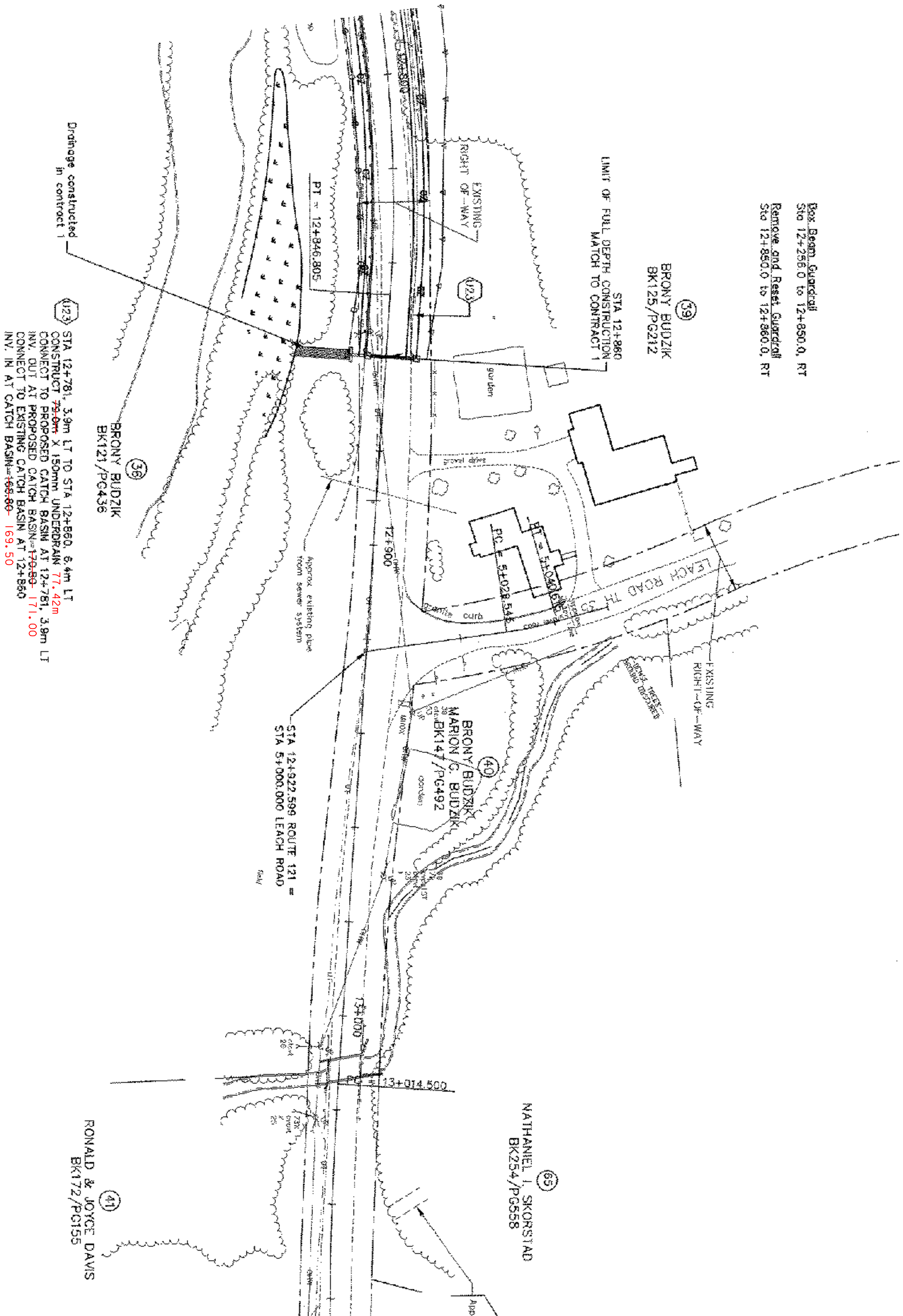


Box Beam Guardrail  
Sta 12+256.0 to 12+850.0, RT  
Remove and Reset Guardrail  
Sta 12+850.0 to 12+860.0, RT



Drainage constructed in contract 1

(123) STA 12+781, 3.8m LT TO STA 12+860, 6.4m LT  
CONSTRUCT 750mm X 150mm UNDERDRAIN 171.42m  
CONNECT TO PROPOSED CATCH BASIN AT 12+781, 3.8m LT  
INV. OUT AT PROPOSED CATCH BASIN=179.99-171.00  
CONNECT TO EXISTING CATCH BASIN AT 12+860  
INV. IN AT CATCH BASIN=165.80-169.50

GRAPHIC SCALE



NOTE:  
THE RELOCATION OF UTILITIES (POLES, ANCHORS, ETC.) WILL BE PERFORMED BY THE UTILITY COMPANY; THE EXISTING UNDERGROUND TELEPHONE LINES WILL BE ABANDONED IN PLACE. REMOVAL AND DISPOSAL OF LINES WILL BE THE CONTRACTOR'S RESPONSIBILITY.

DATUM  
VERTICAL NAD 1929  
HORIZONTAL NAD 1927

V: /1281 /CAD/PLANS/PLAN-02.DWG

THE LOUIS BERGER GROUP, INC.

ROUTE 121 LAYOUT PLAN - 100% DESIGN	
PROJECT:	PROJECT NO.:
GRAFTON-ROCKINGHAM, ROUTE 121	STP 0128(4)S
DESIGN FILE NAME:	PLOT DATE: 12/08/03
IPARM FILE NAME:	SURVEY DATE:
SURVEYED BY:	DRAWN BY:
SQUAD LEADERS:	SHEET: 18 OF 116