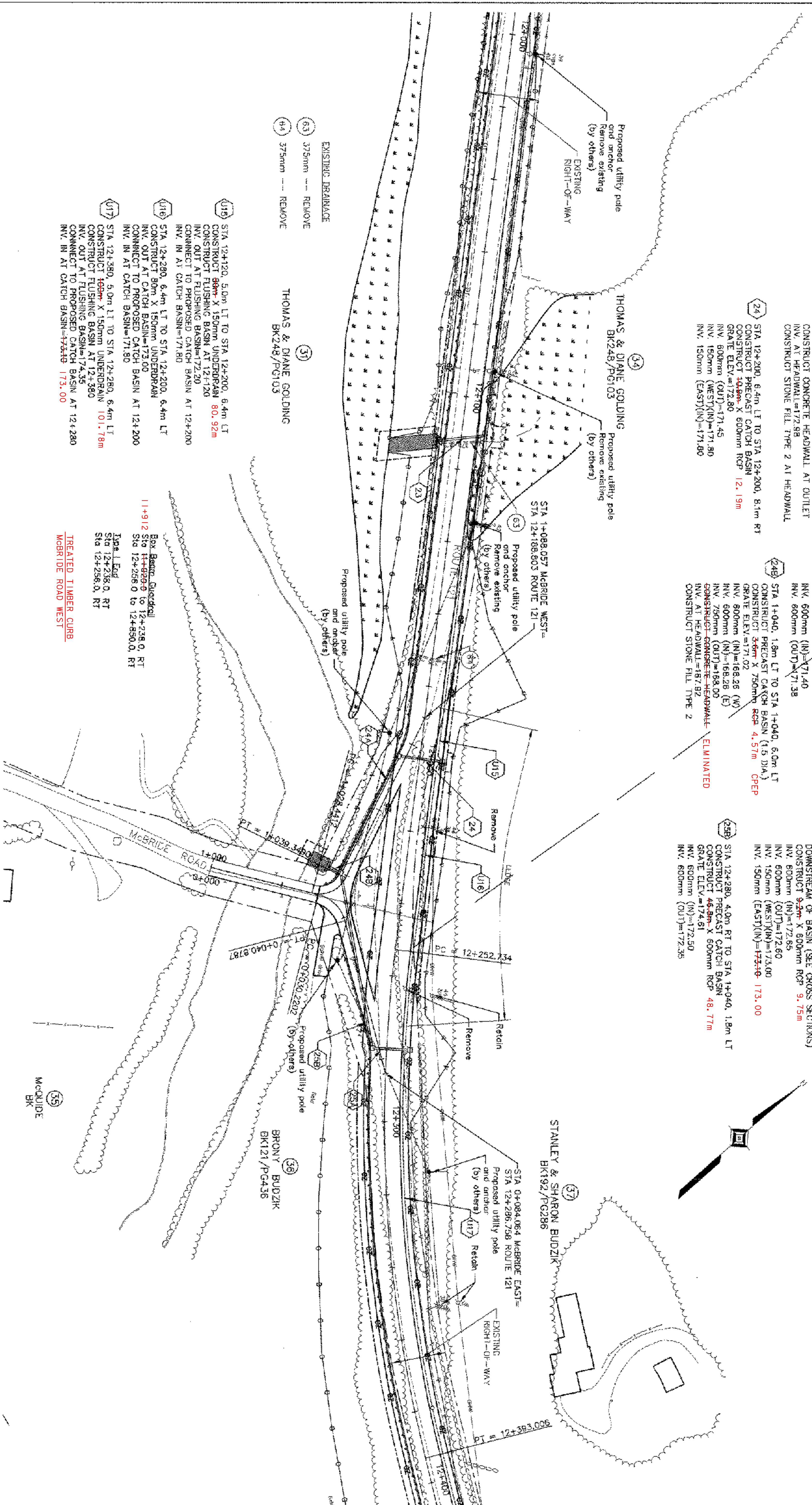


NEW DRAINAGE

- 23 STA 12+110, 6.4m LT TO STA 12+113, 6.8m RT
CONSTRUCT CONCRETE HEADWALL AT INLET
INV. AT HEADWALL=173.40
CONSTRUCT CONCRETE HEADWALL AT OUTLET
INV. AT HEADWALL=172.98
CONSTRUCT STONE FILL TYPE 2 AT HEADWALL
- 24 STA 12+290, 6.4m LT TO STA 12+200, 8.1m RT
CONSTRUCT PRECAST CATCH BASIN
GRATE ELEV.=172.80
INV. 600mm (OUT)=171.45
INV. 150mm (WEST)(IN)=171.80
INV. 150mm (EAST)(IN)=171.80
- 24B STA 1+040, 1.8m LT TO STA 1+040, 6.0m LT
CONSTRUCT PRECAST CATCH BASIN (1.5 DIA.)
GRATE ELEV.=171.02
INV. 800mm (IN)=168.26 (N)
INV. 600mm (IN)=168.26 (E)
INV. 750mm (OUT)=168.00
CONSTRUCT CONCRETE HEADWALL
INV. AT HEADWALL=187.92
CONSTRUCT STONE FILL TYPE 2
- 24A STA 12+200, 5.76m RT TO STA 1+040, 1.8m LT
CONSTRUCT PRECAST CATCH BASIN
GRATE ELEV.=173.38
INV. 600mm (IN)=171.40
INV. 800mm (OUT)=171.38
- 25A STA 12+280, 6.4m LT TO STA 12+280, 4.0m RT
CONSTRUCT PRECAST CATCH BASIN
GRATE ELEV.=173.85
CONSTRUCT 0.3m HIGH X 1m WIDE BERM IN DITCH
DOWNSTREAM OF BASIN (SEE CROSS SECTIONS)
CONSTRUCT 9.2m X 600mm RCP 9.75m
INV. 600mm (IN)=172.85
INV. 600mm (OUT)=172.60
INV. 150mm (WEST)(IN)=173.00
INV. 150mm (EAST)(IN)=173.00
- 25B STA 12+280, 4.0m RT TO STA 1+040, 1.8m LT
CONSTRUCT PRECAST CATCH BASIN
GRATE ELEV.=174.61
INV. 600mm (IN)=172.50
INV. 600mm (OUT)=172.35

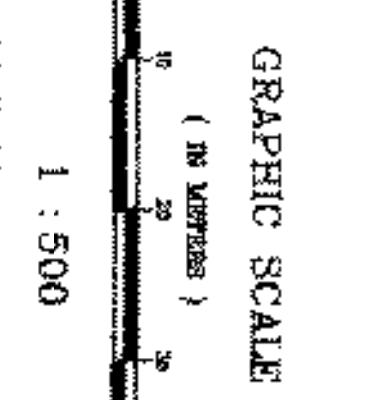
- EXISTING DRAINAGE**
- 63 375mm --- REMOVE
 - 64 375mm --- REMOVE
 - 31 THOMAS & DIANE GOLDING BK248/PG103
 - 35 BRONTY BUDZIK BK121/PG436
 - 35 McQUIDE BK
- NEW DRAINAGE**
- U15 STA 12+120, 5.0m LT TO STA 12+200, 6.4m LT
CONSTRUCT 88mm X 150mm UNDERDRAIN 80.92m
INV. OUT AT FLUSHING BASIN AT 12+120
CONNECT TO PROPOSED CATCH BASIN AT 12+200
INV. IN AT CATCH BASIN=171.80
 - U16 STA 12+280, 6.4m LT TO STA 12+200, 6.4m LT
CONSTRUCT 80m X 150mm UNDERDRAIN
INV. OUT AT CATCH BASIN=173.00
CONNECT TO PROPOSED CATCH BASIN AT 12+200
INV. IN AT CATCH BASIN=171.80
 - U17 STA 12+380, 5.0m LT TO STA 12+280, 6.4m LT
CONSTRUCT 169mm X 150mm UNDERDRAIN 101.78m
CONSTRUCT FLUSHING BASIN AT 12+380
INV. OUT AT FLUSHING BASIN=174.35
CONNECT TO PROPOSED CATCH BASIN AT 12+280
INV. IN AT CATCH BASIN=173.40

Box Bedding: Gravel
Sta 12+238.0 to 12+238.0, RT
Sta 12+256.0 to 12+256.0, RT
Type L End
Sta 12+238.0, RT
Sta 12+256.0, RT
TREATED TIMBER CURB
McBRIDE ROAD WEST



DATE:	NOV 1929
VERTICAL:	NAD 1927
HORIZONTAL:	NAD 1927

NOTE:
THE RELOCATION OF UTILITIES (POLES, ANCHORS, ETC.) WILL BE PERFORMED BY THE UTILITY COMPANY. THE EXISTING UNDERGROUND TELEPHONE LINE WILL BE ABANDONED IN PLACE. REMOVAL AND DISPOSAL OF LINES WILL BE THE CONTRACTORS RESPONSIBILITY.



THE LOUIS BERGER GROUP, INC.

ROUTE 121 LAYOUT PLAN - 100% DESIGN	
PROJECT:	PROJECT NO.:
GRAFTON-ROCKINGHAM, ROUTE 121	STP 0126(4)5
DESIGN FILE NAME:	PLOT DATE: 12/08/03
IPARM FILE NAME:	SURVEY DATE:
SURVEYED BY:	DRAWN BY:
SOUND LEADER:	SHEET: 16 OF 116