

CONSTRUCT DRIVE	
LEFT	RIGHT
11+690	11+918
11+710	

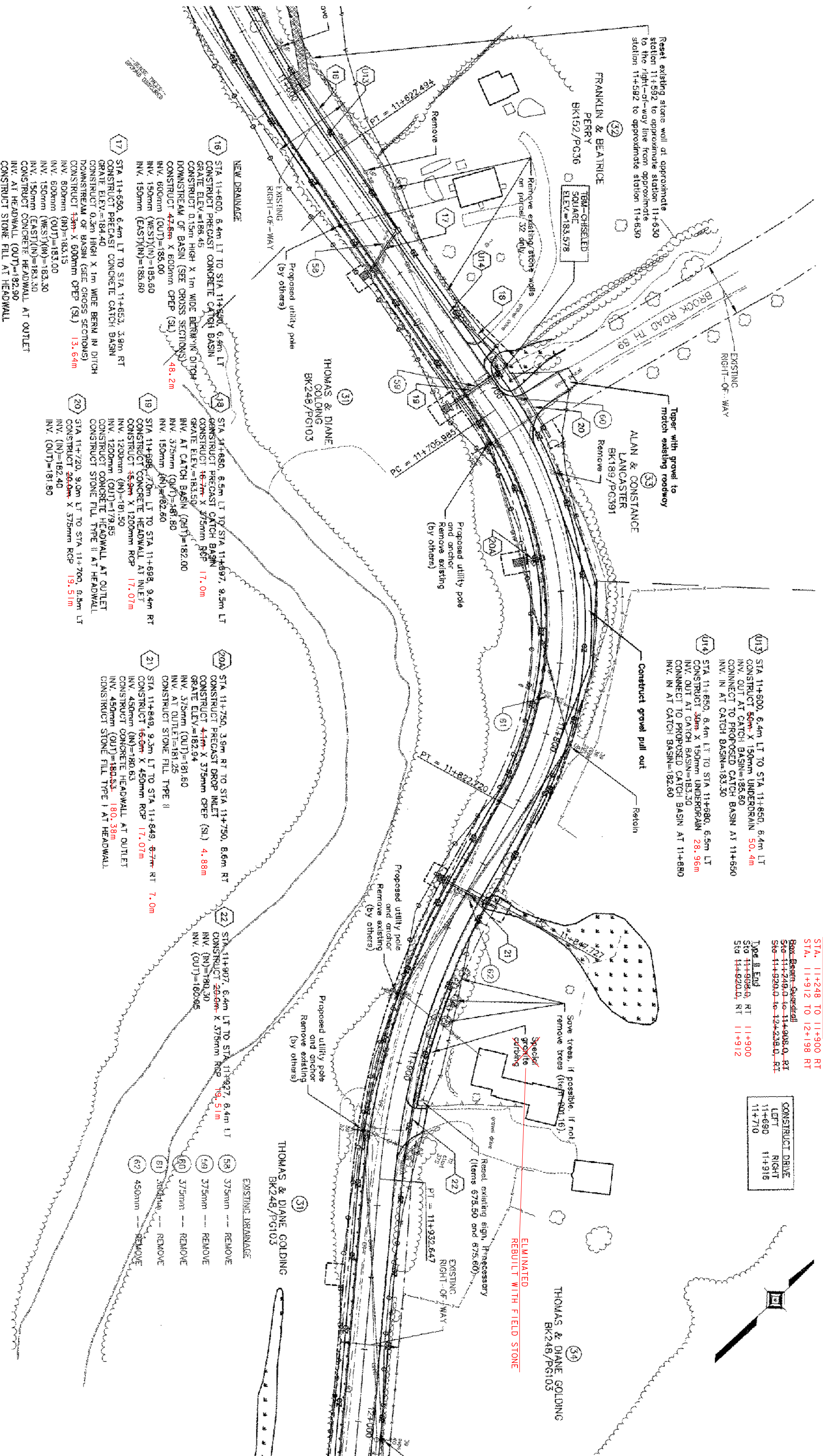
BOX BEAM GUARDRAIL
 STA. 11+248 TO 11+900 RT
 STA. 11+912 TO 12+198 RT
~~Box Beam Guardrail~~
~~Sta 11+248.0 to 11+908.0 RT~~
~~Sta 11+920.0 to 12+235.0 RT~~

U13 STA 11+800, 6.4m LT TO STA 11+650, 6.4m LT
 CONSTRUCT 50m X 150mm UNDERDRAIN 50.4m
 INV. OUT AT CATCH BASIN=183.50
 CONNECT TO PROPOSED CATCH BASIN AT 11+650
 INV. IN AT CATCH BASIN=183.30

U14 STA 11+850, 6.4m LT TO STA 11+680, 6.5m LT
 CONSTRUCT 30m X 150mm UNDERDRAIN 28.96m
 INV. OUT AT CATCH BASIN=183.30
 CONNECT TO PROPOSED CATCH BASIN AT 11+680
 INV. IN AT CATCH BASIN=182.80

Type # End
 Sta 11+908.0 RT 11+900
 Sta 11+920.0 RT 11+912

Reset existing stone wall at approximate station 11+592 to approximate station 11+630 to the right-of-way line from approximate station 11+592 to approximate station 11+630



- NEW DRAINAGE**
- 16 STA 11+600, 6.4m LT TO STA 11+590, 6.4m LT
 CONSTRUCT PRECAST CONCRETE CATCH BASIN
 GRATE ELEV.=184.45
 CONSTRUCT 0.15m HIGH X 1m WIDE BENTONITE DITCH
 DOWNSTREAM OF BASIN (SEE CROSS SECTIONS)
 CONSTRUCT 47.6m X 600mm CPEP (SL) 48.2m
 INV. 600mm (OUT)=185.00
 INV. 150mm (WEST)(IN)=185.50
 INV. 150mm (EAST)(IN)=185.80
 - 17 STA 11+650, 6.4m LT TO STA 11+653, 3.9m RT
 CONSTRUCT PRECAST CONCRETE CATCH BASIN
 GRATE ELEV.=184.40
 CONSTRUCT 0.3m HIGH X 1m WIDE BERM IN DITCH
 DOWNSTREAM OF BASIN (SEE CROSS SECTIONS)
 CONSTRUCT 15m X 600mm CPEP (SL) 13.64m
 INV. 600mm (OUT)=183.15
 INV. 600mm (OUT)=183.00
 INV. 150mm (WEST)(IN)=183.30
 INV. 150mm (EAST)(IN)=183.30
 CONSTRUCT CONCRETE HEADWALL AT OUTLET
 INV. AT HEADWALL (OUT)=182.90
 CONSTRUCT STONE FILL AT HEADWALL
 - 18 STA 11+680, 6.5m LT TO STA 11+697, 9.5m LT
 CONSTRUCT PRECAST CONCRETE CATCH BASIN
 GRATE ELEV.=183.50
 INV. AT CATCH BASIN (IN)=182.00
 INV. 375mm (OUT)=181.50
 INV. 150mm (IN)=182.50
 - 19 STA 11+698, 7.0m LT TO STA 11+698, 9.4m RT
 CONSTRUCT CONCRETE HEADWALL AT INLET
 CONSTRUCT 15m X 1200mm RCP 17.07m
 INV. 1200mm (IN)=181.50
 CONSTRUCT CONCRETE HEADWALL AT OUTLET
 CONSTRUCT STONE FILL TYPE II AT HEADWALL
 STA 11+720, 9.0m LT TO STA 11+700, 9.5m LT
 CONSTRUCT 240m X 375mm RCP 19.51m
 INV. (IN)=182.40
 INV. (OUT)=181.80
 - 20 STA 11+750, 3.9m RT TO STA 11+750, 8.6m RT
 CONSTRUCT PRECAST DROP INLET
 CONSTRUCT 4.1m X 375mm RCP (SL) 4.88m
 INV. 375mm (OUT)=182.94
 INV. AT OUTLET=181.25
 CONSTRUCT STONE FILL TYPE II
 - 21 STA 11+849, 9.5m LT TO STA 11+849, 8.7m RT 7.0m
 CONSTRUCT 16.5m X 450mm RCP 17.07m
 INV. 450mm (IN)=180.85
 CONSTRUCT CONCRETE HEADWALL AT OUTLET
 INV. 450mm (OUT)=180.53 180.38m
 CONSTRUCT STONE FILL TYPE I AT HEADWALL

20A STA 11+750, 3.9m RT TO STA 11+750, 8.6m RT
 CONSTRUCT PRECAST DROP INLET
 CONSTRUCT 4.1m X 375mm RCP (SL) 4.88m
 INV. 375mm (OUT)=182.94
 INV. AT OUTLET=181.25
 CONSTRUCT STONE FILL TYPE II

22 STA 11+907, 6.4m LT TO STA 11+907, 6.4m LT
 CONSTRUCT 20.0m X 375mm RCP 19.51m
 INV. (IN)=180.30
 INV. (OUT)=180.85

EXISTING DRAINAGE

- 58 375mm -- REMOVE
- 59 375mm -- REMOVE
- 60 375mm -- REMOVE
- 61 375mm -- REMOVE
- 62 450mm -- REMOVE

DATUM
 VERTICAL NGVD 1928
 HORIZONTAL NAD 1987

NOTE:
 THE RELOCATION OF UTILITIES (POLES, ANCHORS, ETC.) WILL BE PERFORMED BY THE UTILITY COMPANY. THE EXISTING UNDERGROUND TELEPHONE LINES WILL BE ABANDONED IN PLACE. REMOVAL AND DISPOSAL OF LINES WILL BE THE CONTRACTORS RESPONSIBILITY.



THE LOUIS BERGER GROUP, INC.

ROUTE 121 LAYOUT PLAN - 100% DESIGN	
PROJECT:	PROJECT NO.:
GRAFTON-ROCKINGHAM, ROUTE 121	STP 0126(4)S
DESIGN FILE NAME:	PLOT DATE: 12/08/03
PLANNING FILE NAME:	SURVEY DATE:
SURVEYED BY:	DRAWN BY:
SQUAD LEADER:	SHEET: 15 OF 116