



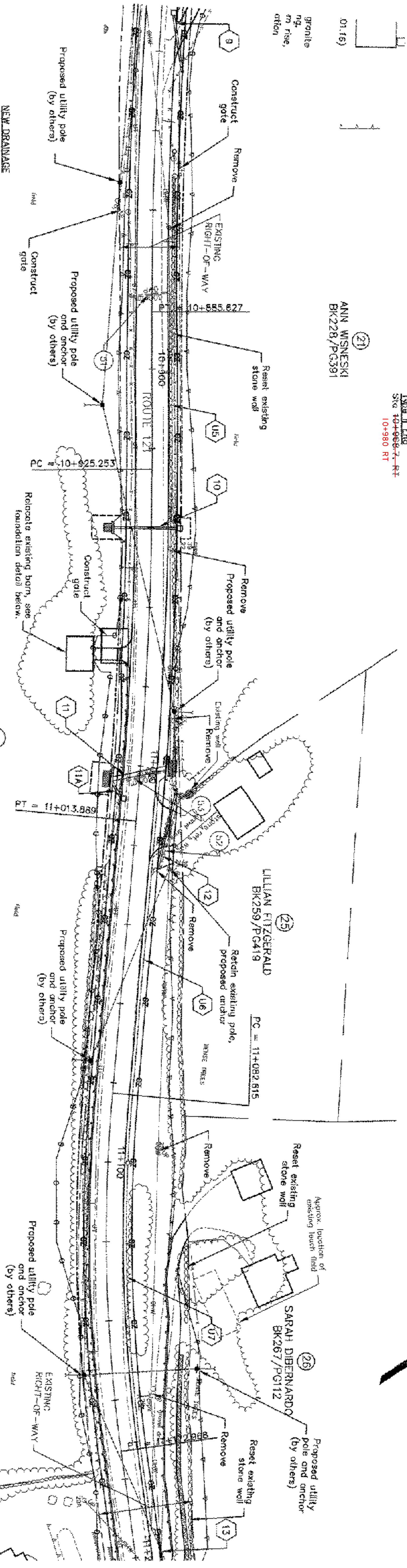
CONSTRUCT DRIVE
LEFT
RIGHT

Box Beam Structural
Sta 10+980.7 to 11+220.2, RT
Dhermardo Driveway, LT
Top Level
2 - Dhermardo Driveway, LT
Top Level
Sta 10+980.7-RT
10+980 RT

ANN WISNESKI
BK228/PG391

LILLIAN FITZGERALD
BK259/PG419
PC = 11+082.615

SARAH DIBERNARD
BK267/PG112



NEW DRAINAGE

- 9 STA 10+810, 3.6m LT TO STA 10+825, 6.1m LT
CONSTRUCT PRECAST CATCH BASIN
CONSTRUCT 15m X 375mm CPEP (SL)
GRATE ELEV.=187.92
INV. 150mm (IN)=186.80
INV. 375mm (OUT)=186.65
INV. @ END OF PIPE=186.60
- 10 STA 10+940, 7.2m LT TO STA 10+940, 10.5m RT
CONSTRUCT PRECAST CATCH BASIN
CONSTRUCT 17.2m X 600mm CPEP (SL) 17.22m
GRATE ELEV.=184.95
INV. 600mm (OUT)=183.6
INV. 150mm (IN)=184.0
CONSTRUCT CONCRETE HEADWALL AT OUTLET
INV. AT HEADWALL=183.6
CONSTRUCT STONE FILL TYPE I AT HEADWALL
- 11 STA 11+000, 7.0m LT TO STA 11+004, 7.2m RT
CONSTRUCT CONCRETE HEADWALL AT INLET
CONSTRUCT 17.8m X 1200mm RCP 14.63m
INV. 1200mm (IN)=183.40
INV. 150mm (IN)=183.50
CONSTRUCT CONCRETE HEADWALL AT OUTLET
INV. 1200mm (OUT)=183.26
CONSTRUCT STONE FILL TYPE II
- 11A STA 11+009, 3.9m RT TO STA 11+004, 7.2m RT
CONSTRUCT DROP INLET
CONSTRUCT 4.9m X 375mm RCP 4.88m
GRATE ELEV.=183.32
INV. 375mm (OUT)=183.85
CONNECT TO HEADWALL
INV. AT HEADWALL=183.70
CONSTRUCT STONE FILL TYPE II AT HEADWALL
- 12 STA 11+025, 6.5m LT TO STA 11+006, 9.5m LT
CONSTRUCT 57m X 375mm CPEP (SL) 22.55m
INV. 375mm (IN)=184.65
INV. 375mm (OUT)=184.00

EXISTING DRAINAGE

- S1 300mm --- REMOVE
- S2 300mm --- REMOVE
- S3 300mm --- REMOVE
- U5 STA 10+845, 5.0m LT TO STA 10+940, 7.2m LT
CONSTRUCT 94.8m X 150mm UNDERDRAIN 95.37m
CONSTRUCT FLUSHING BASIN AT 10+845
INV. OUT AT FLUSHING BASIN=184.80
CONNECT TO PROPOSED CATCH BASIN AT 10+940
INV. AT CATCH BASIN=184.00
- U6 STA 11+100, 5.0m LT TO STA 11+009, 7.0m LT
CONSTRUCT 46m X 150mm UNDERDRAIN 99.34m
CONSTRUCT FLUSHING BASIN AT 11+100
CONNECT TO PROPOSED CONCRETE HEADWALL AT 11+000
INV. AT HEADWALL=183.50
- U7 STA 11+195, 5.0m LT TO STA 11+100, 5.0m LT
CONSTRUCT 98m X 150mm UNDERDRAIN 95m
CONNECT TO PROPOSED CATCH BASIN AT 11+195
CONNECT TO PROPOSED FLUSHING BASIN AT 11+100
INV. IN AT CATCH BASIN=184.90

BARRIED WIRE FENCE - ITEM 620.25
STA 10+790 - 10+965, RT ALONG RIGHT OF WAY, RETURN SOUTH ALONG DRIVEWAY TO RELOCATED BARN.
STA 10+975 - 11+175, RT FROM BARN NORTH TO RIGHT OF WAY, EAST ALONG RIGHT OF WAY TO PROPERTY LINE.
STA 10+620 - 11+005, LT ALONG RIGHT OF WAY

GATES - ITEM 620.15
STA 10+830, LT
STA 10+960, RT
STA 10+967, RT

NOTE:
THE RELOCATION OF UTILITIES (POLES, ANCHORS, ETC.) WILL BE PERFORMED BY THE UTILITY COMPANY. THE EXISTING UNDERGROUND TELEPHONE LINE WILL BE ABANDONED IN PLACE. REMOVAL AND DISPOSAL OF LINES WILL BE THE CONTRACTORS RESPONSIBILITY.

DATUM
VERTICAL NGVD 1928
HORIZONTAL NAD 1927

V: 17661 / CADW / PLANS / PLAN - C2.DWG



GRAPHIC SCALE
(IN METERS)

1 : 500

THE LOUIS BERGER GROUP, INC.

ROUTE 121 LAYOUT PLAN - 100% DESIGN	
PROJECT: GRAFTON-ROCKINGHAM, ROUTE 121	PROJECT NO.: STP 0126(4)S
DESIGN FILE NAME: P/ARMA FILE NAME:	PLOT DATE: 12/08/03
SURVEYED BY: SQUAD LEADER:	SURVEY DATE:
	DRAWN BY:
	SHEET: 13 OF 116

