

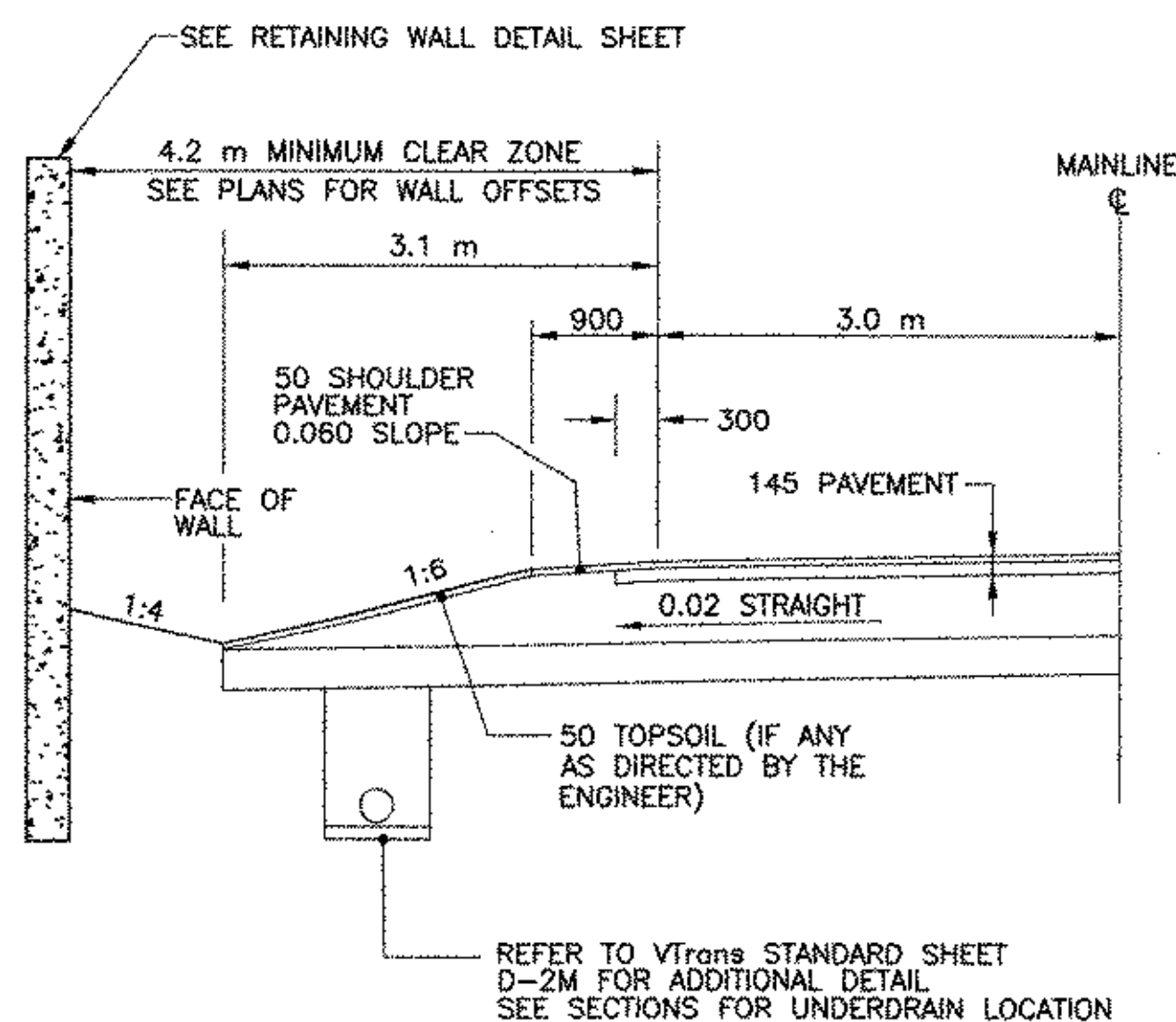
# TYPICAL SECTIONS

145 mm BITUMINOUS CONCRETE PAVEMENT  
 (PLACED IN TWO (2) LIFTS CONSISTING OF 50 mm TYPE III AND 95 mm TYPE I)  
 450 mm SUBBASE OF CRUSHED STONE  
 300 mm SAND BORROW  
 SHOULDERS: 50 mm BITUMINOUS CONCRETE PAVEMENT

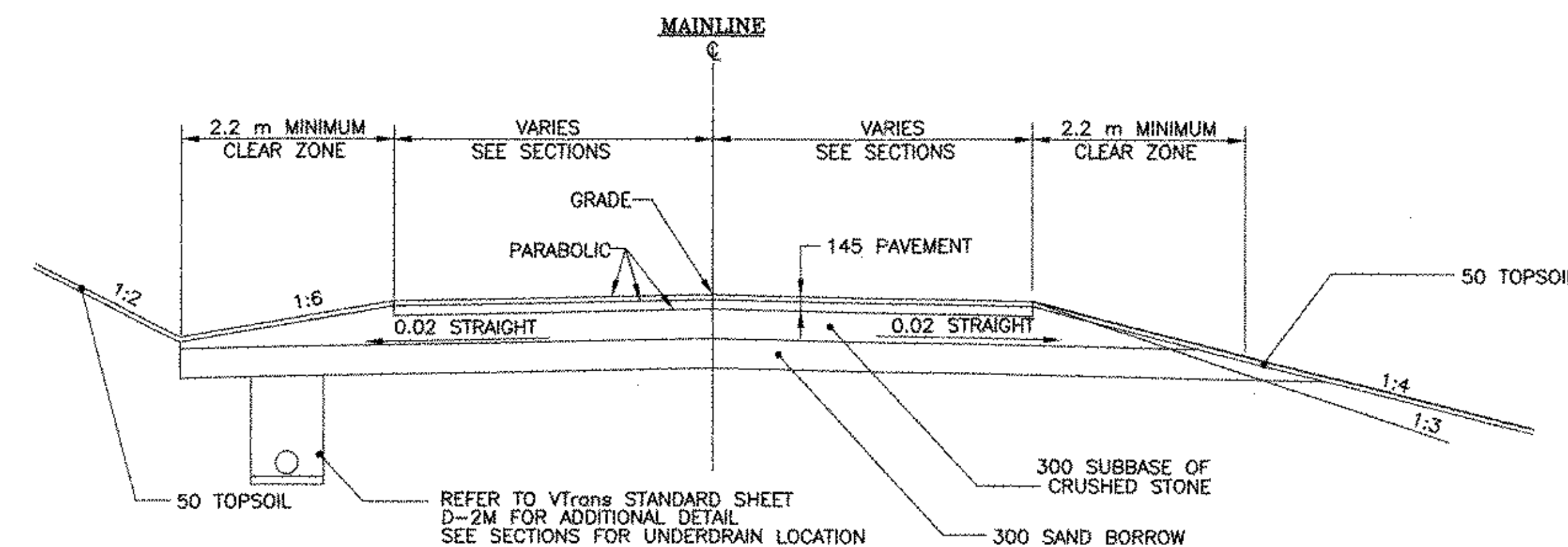
TACK COAT-EMULSIFIED ASPHALT IS TO BE APPLIED AT A RATE OF 0.07 L/m<sup>2</sup> BETWEEN SUCCESSIVE COURSES OF PAVEMENT AS DIRECTED BY THE ENGINEER.

BITUMINOUS CONCRETE PAVEMENT REQUIRES THE USE OF PERFORMANCE GRADED ASPHALT, 58-28

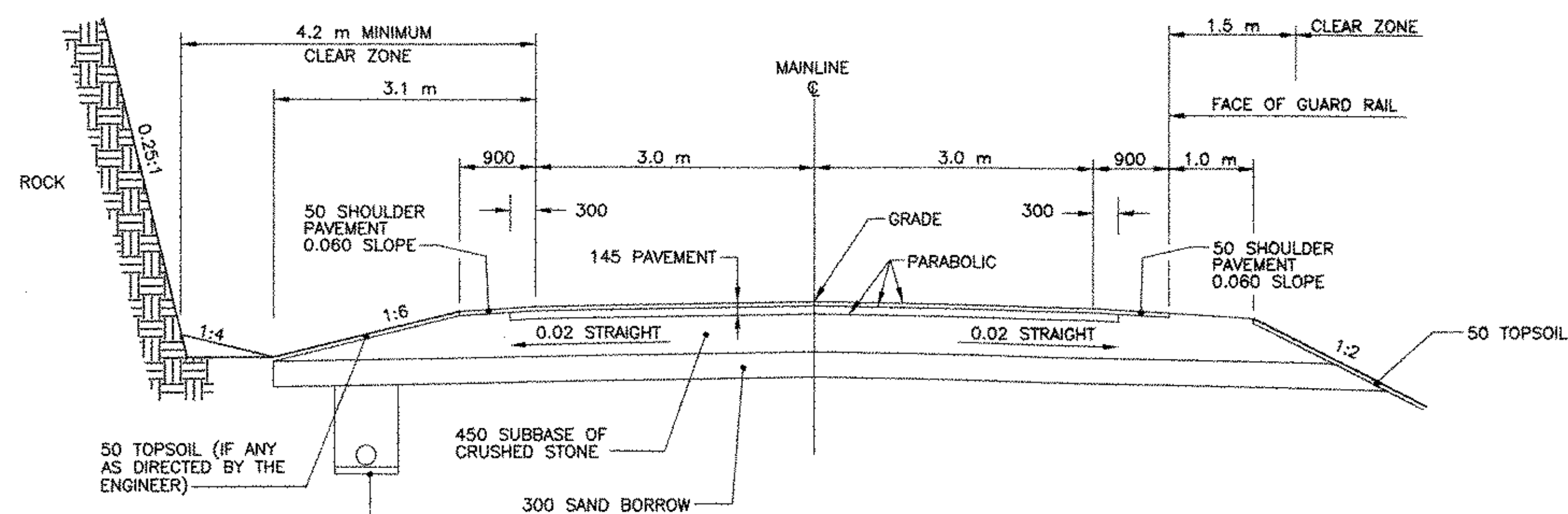
MATERIAL ITEM	THICKNESS TOLERANCE
PAVEMENT (TOTAL DEPTH)	5 mm
SUBBASE	30 mm
SAND BORROW	30 mm



**WALL SECTION**

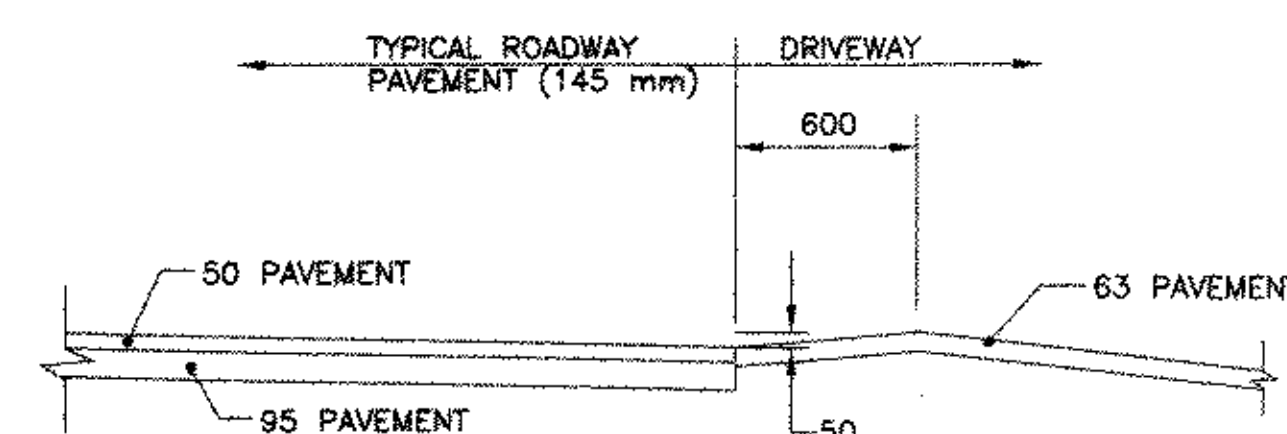


**NORMAL SECTION  
SIDE ROADS**

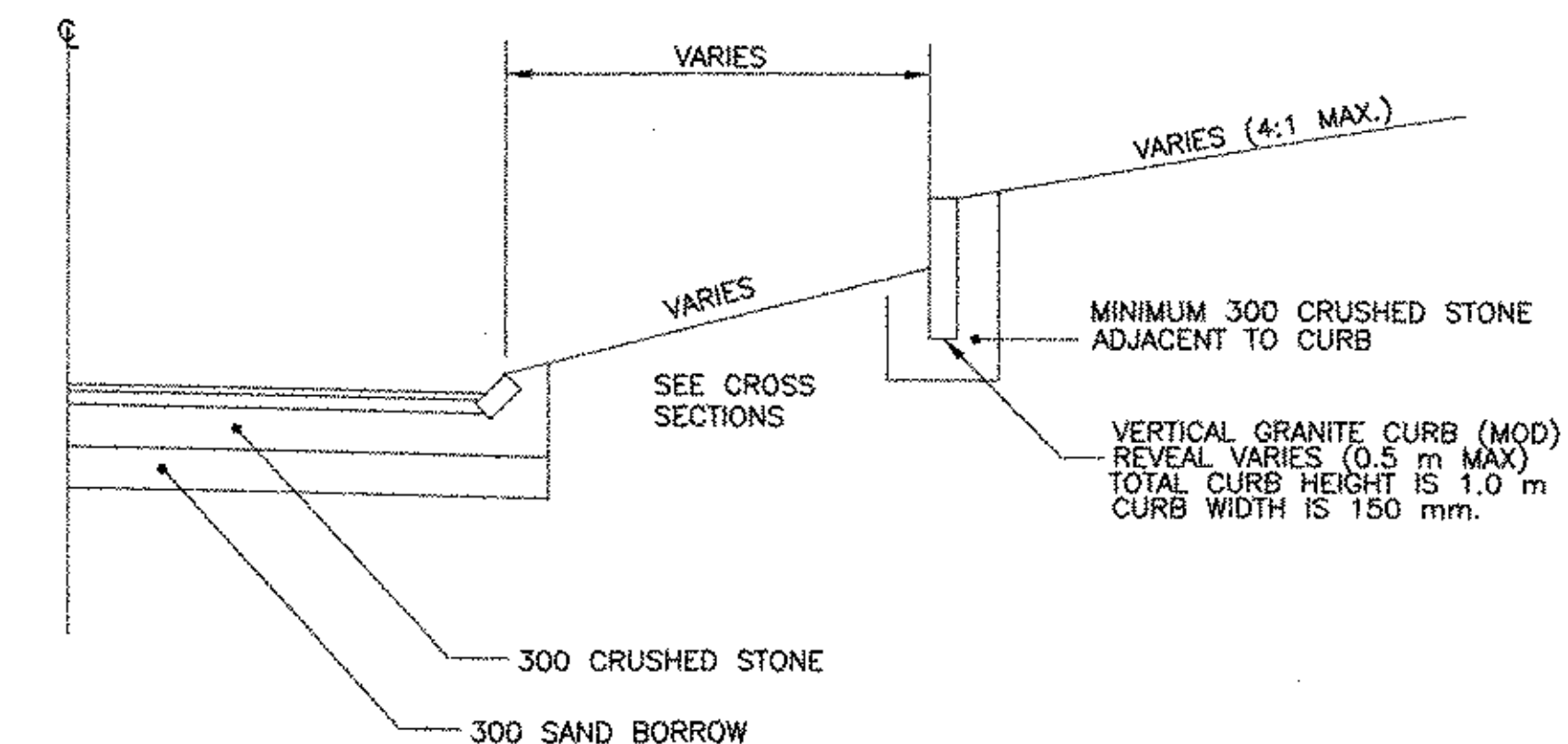


**NORMAL SECTION  
IN ROCK CUT**

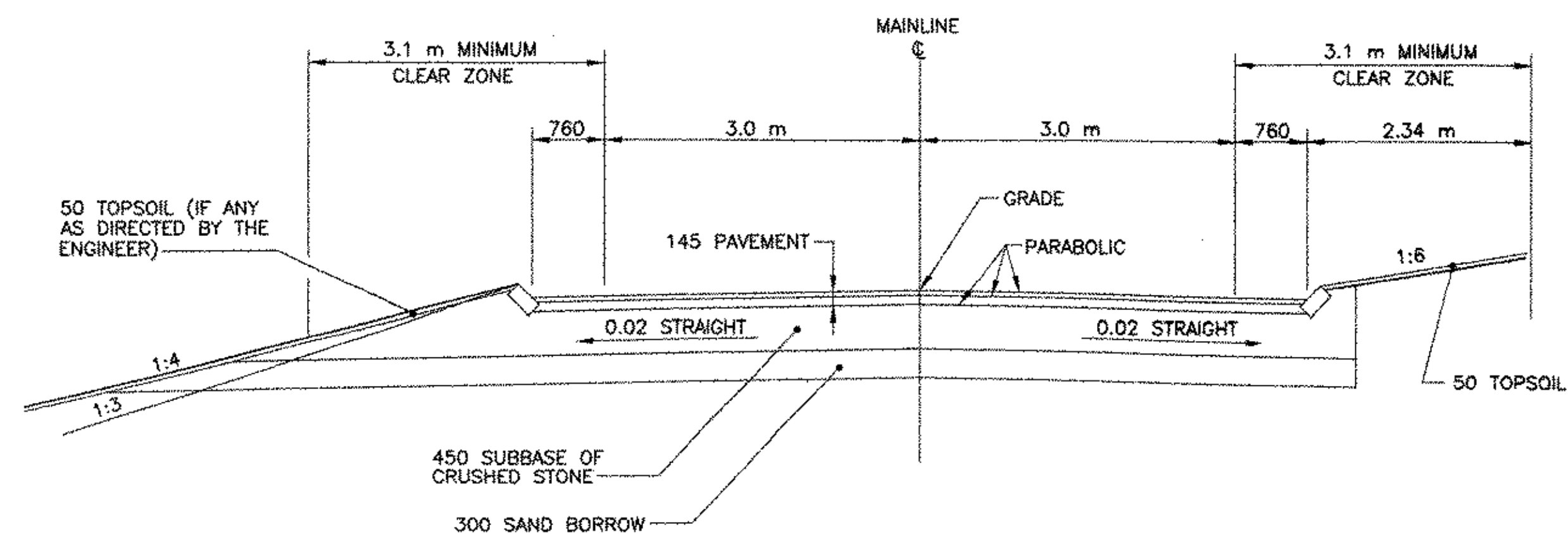
**NORMAL SECTION  
WITH GUARDRAIL**



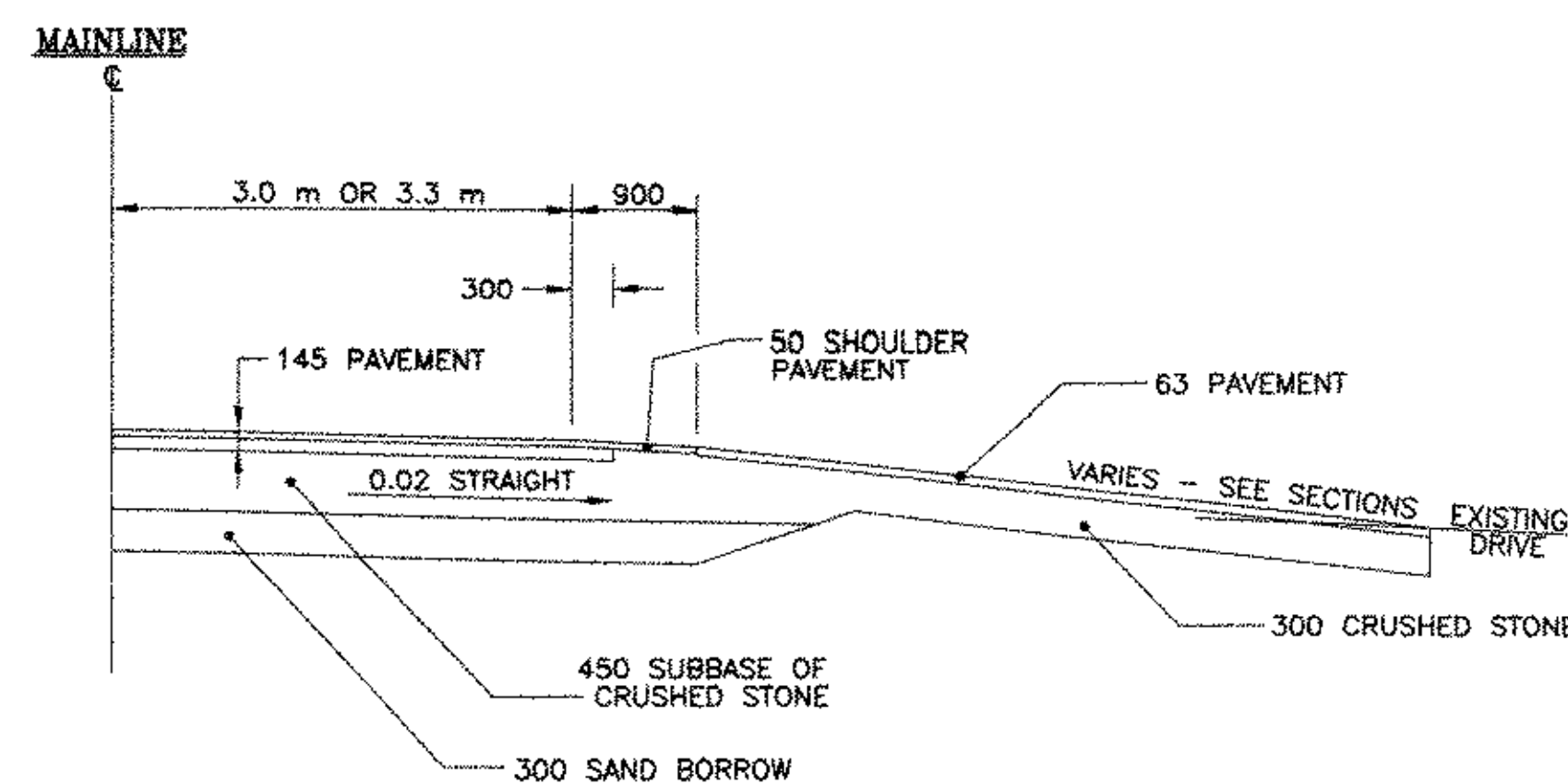
**DRIVEWAY DETAIL  
DRIVENWAYS IN AREAS  
WITH EDGING**



**VERTICAL GRANITE CURB (MOD)  
STA. 10+746 TO STA. 10+788, LT  
STA. 11+875 TO STA. 11+910, LT**



**SPECIAL SECTION WITH  
GRANITE SLOPED EDGING  
STA. 10+048 TO STA. 10+500**



**DRIVEWAY DETAIL**

NOTE: DRIVES AND SIDEROADS WILL BE PAVED TO THE LIMIT OF EXCAVATION AND TO THE WIDTHS INDICATED ON THE PLANS.

TYPICAL SECTIONS	
PROJECT: GRAFTON-ROCKINGHAM, ROUTE 121	PROJECT NO. : STP 0126(4)S
DESIGN FILE NAME: IPARM FILE NAME: SURVEYED BY: SQUAD LEADER:	PLOT DATE: 12/08/03 SURVEY DATE: DRAWN BY: SHEET: 10 OF 116

DATUM	
VERTICAL	NGVD 1929
HORIZONTAL	NAD 1927