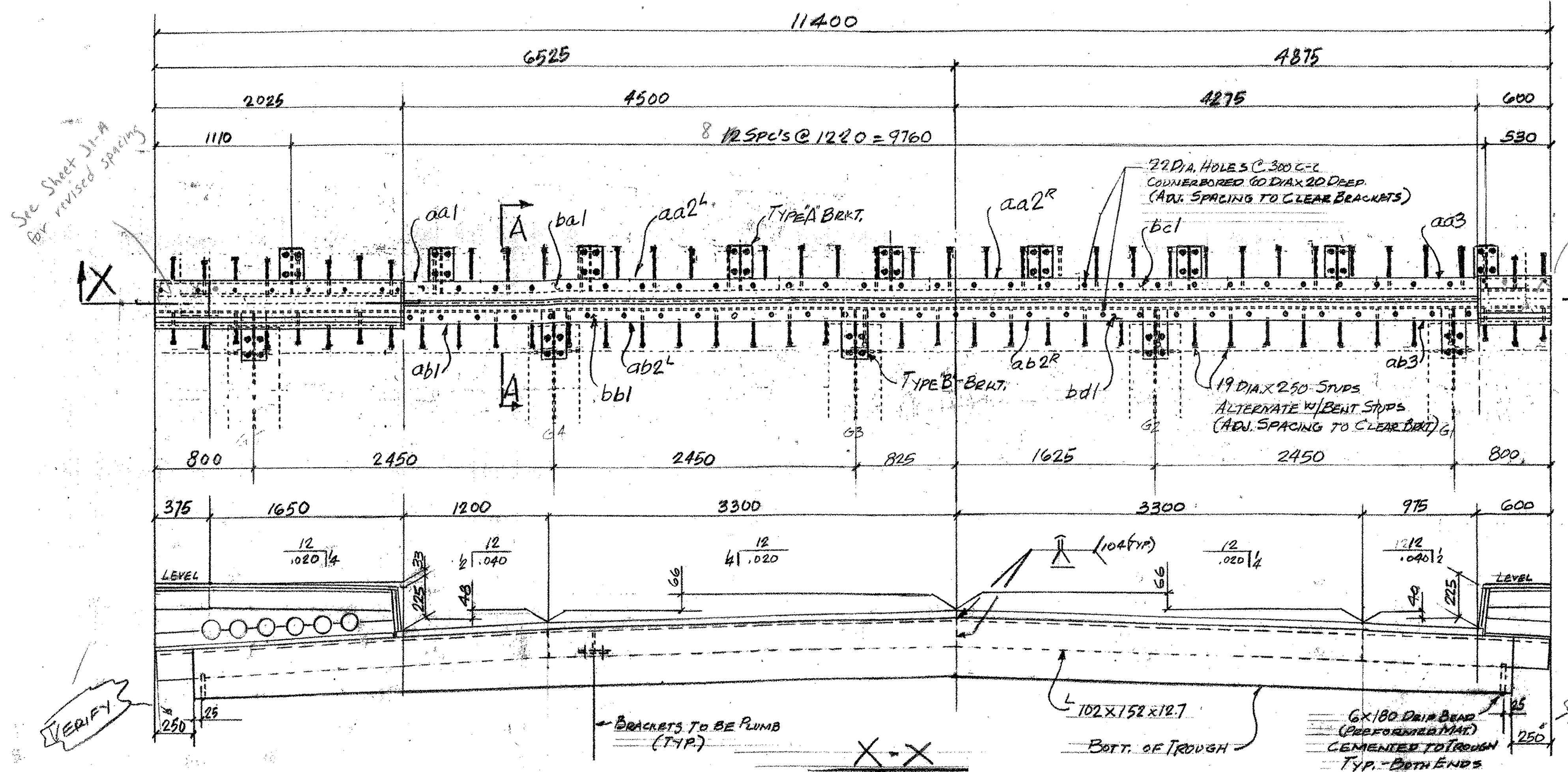


ABM INFO		SHOP BILL			JOB NO.	DRG. NO.
PAGE	LINE	NO.	DESCRIPTION	QTY	MARK	REMARKS
	1		EXP. JOINT ASBY	11400		EJ1
	2		L 152x102x12.7	3825	aa1	
	1		DO	2000	aa2	
	1		DO	1875	aa3	
	1		L 203x102x12.7	3825	ab1	
	2		DO	3000	ab2	
	1		DO	1875	ab3	
	1		BAR 32x140	4225	ba1	
	1		DO	4225	ba2	
	1		DO	4225	ba3	
	1		DO	4225	ba4	
	9		R 12x 128	3825	ba1	bfi
	9		R 12x 200	2450	ba1	bfi
	5		R 12x 200	3825	ba1	bfi
	5		R 12x 153	3825	ba1	bfi
	36		M20 HEX BOLTS	600	ma1	
	36		M20 ANCH FERRULES	600	mb1	
	76		19# ANG STUDS	2800	mc1	
	2		PREFORMED FABRIC TROUGH	11000	mf1	
	2		TYP. 16x75	11000	mg1	
	36		24# PRECISED BARS	130	ts1	
	20		DO	203	ts2	
	112		24# HEX NUTS	75	nl	
	112		R 10 x 75	75	nl	
	1		R 12x279	2000	cp1	SLIP-NOT 4000 SWIP SURFACE
	1		R 12x50	2000	cp2	
	1		L 102x102x12.7	2025	cp3	FIT
	1		R 12x340	2013	cp4	
	1		R 12x340	1998	cp5	
	2		R 12x279	210	cp6	
	2		R 12x50	210	cp7	
	2		R 12x114	190	cp8	
	1		R 12x279	575	cp9	
	1		R 12x50	575	cp10	
	1		L 102x102x12.7	600	cp11	FIT
	1		R 12x233	588	cp12	FIT
	1		R 12x233	575	cp13	FIT
	1		L 102x102x12.7	2025	cp14	FIT
	2		DO	203	cp15	FIT
	1		DO	600	cp16	FIT
	2		DO	588	cp17	FIT
	58		M20 HEX BOLTS	600	ma1	
	58		M20 ANCH FERRULES	600	mb1	
	10		M20 PRECISED BARS	75	ma1	GALV.
	18		19# ANG. STUDS	190	ma1	

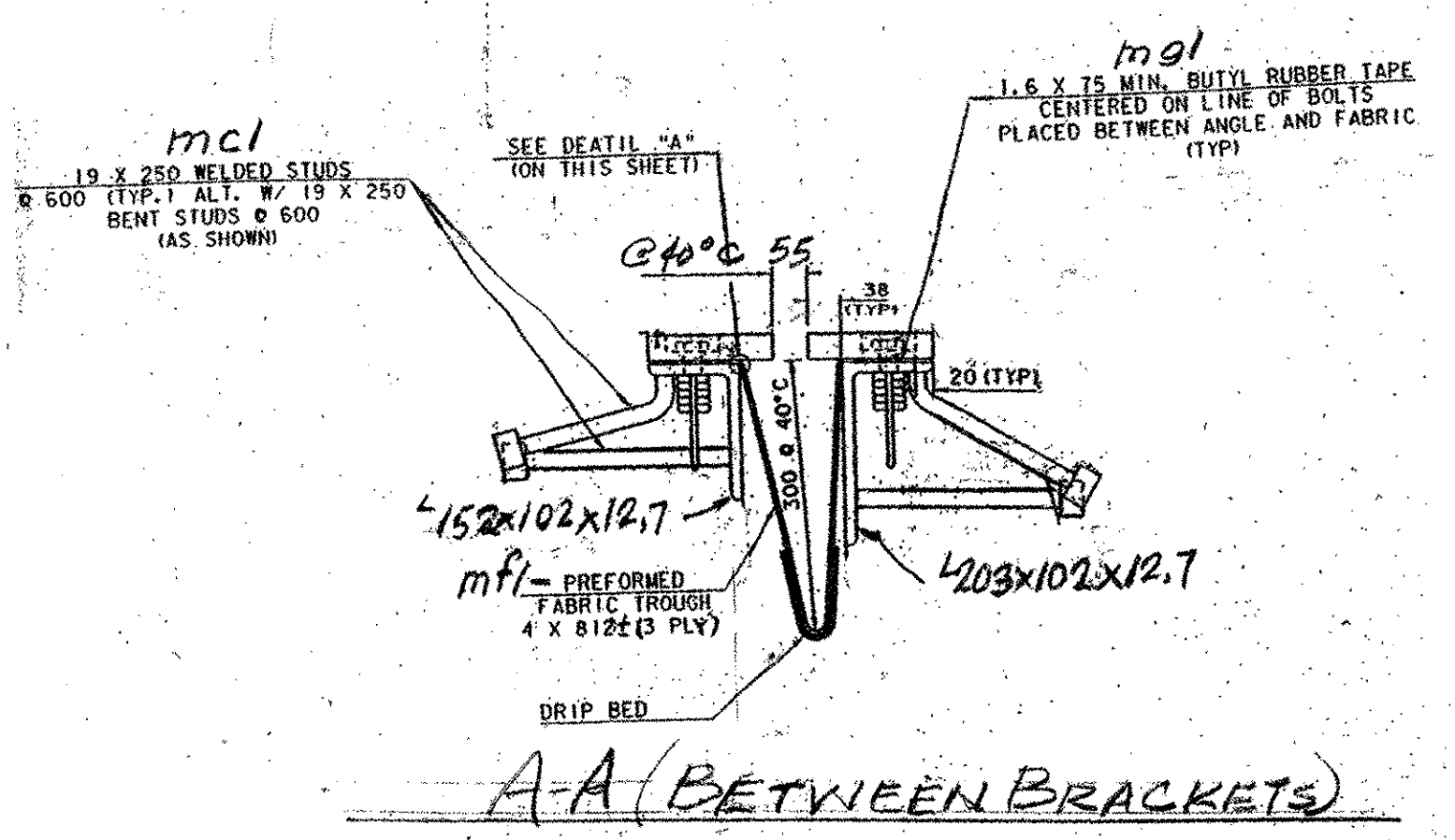
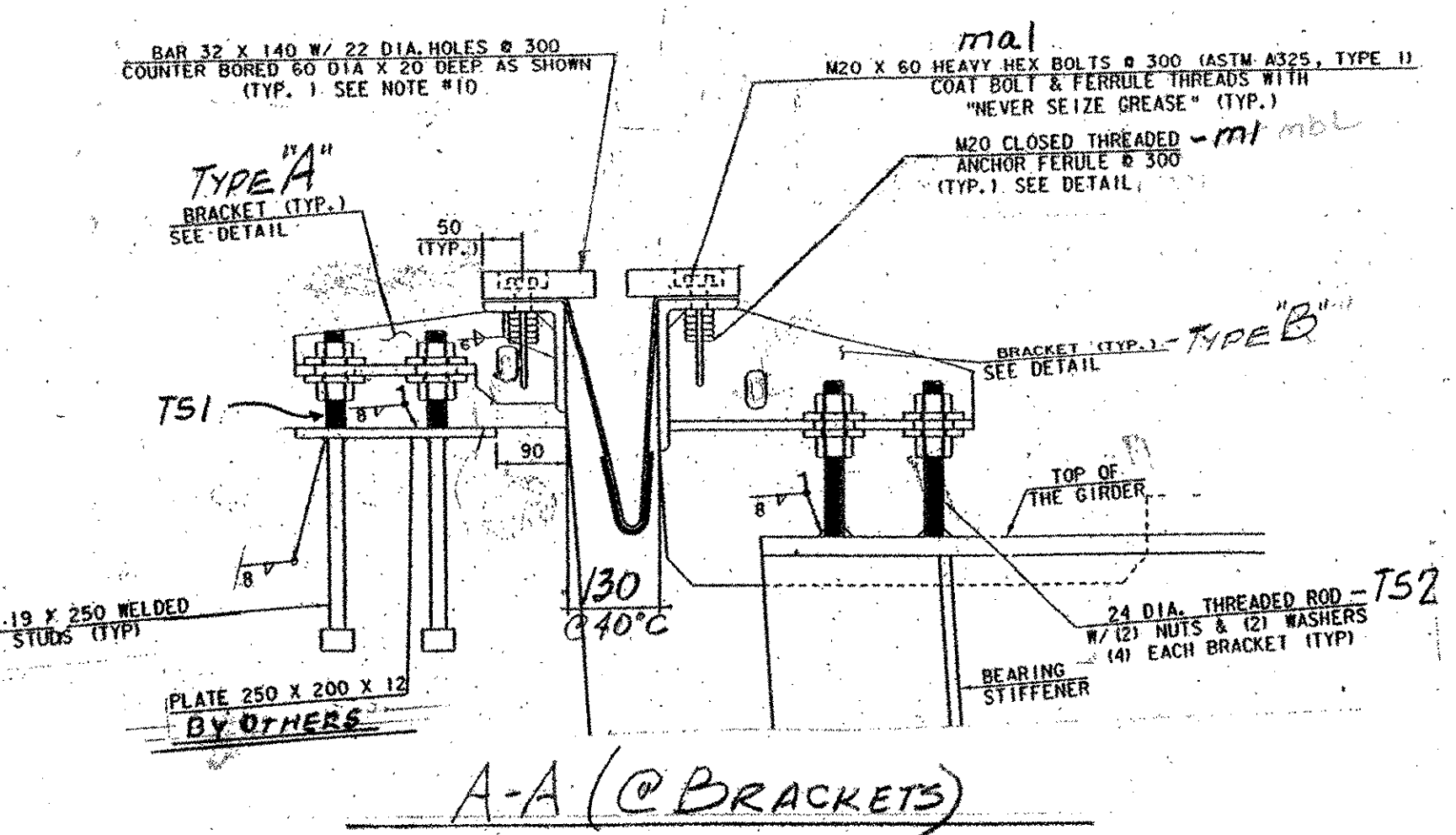
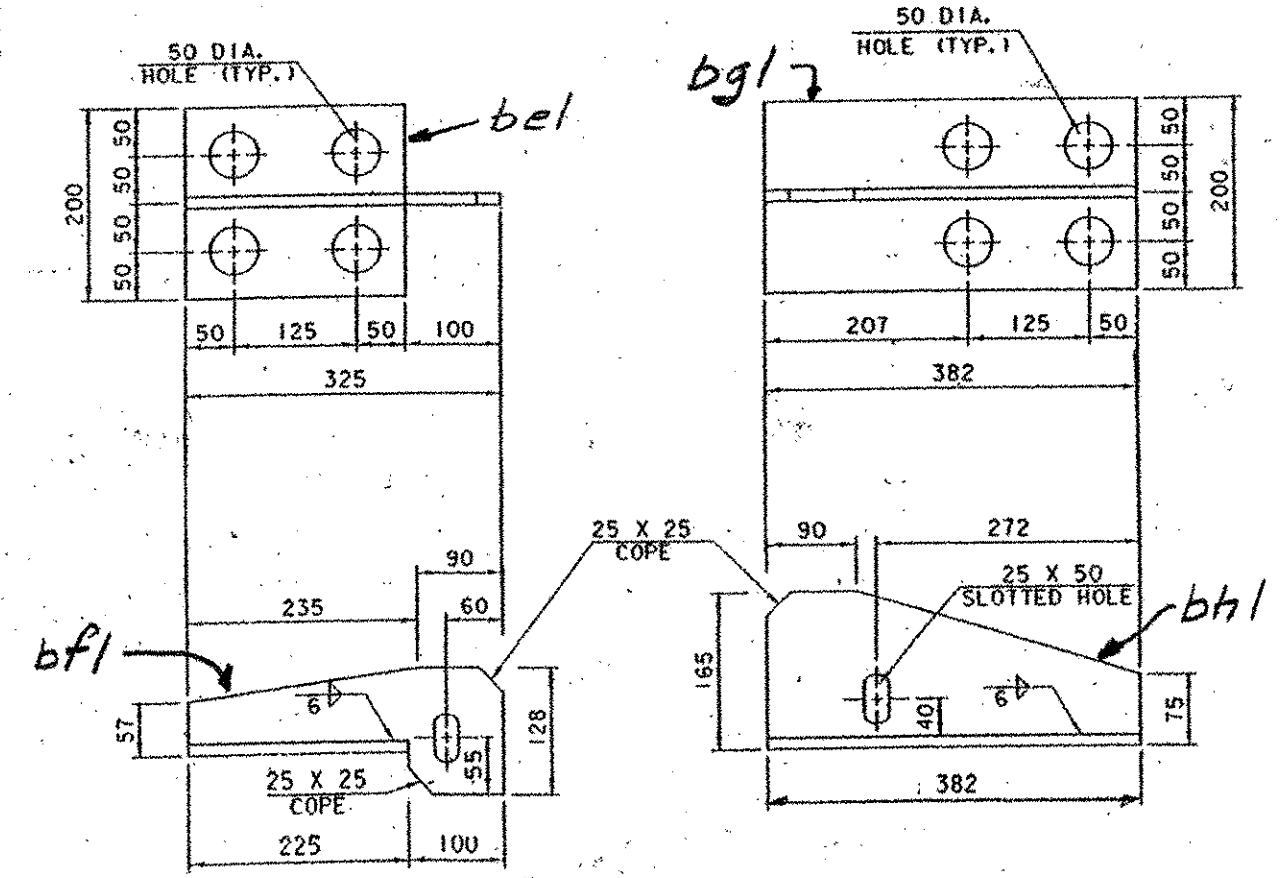
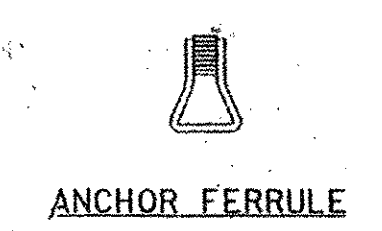
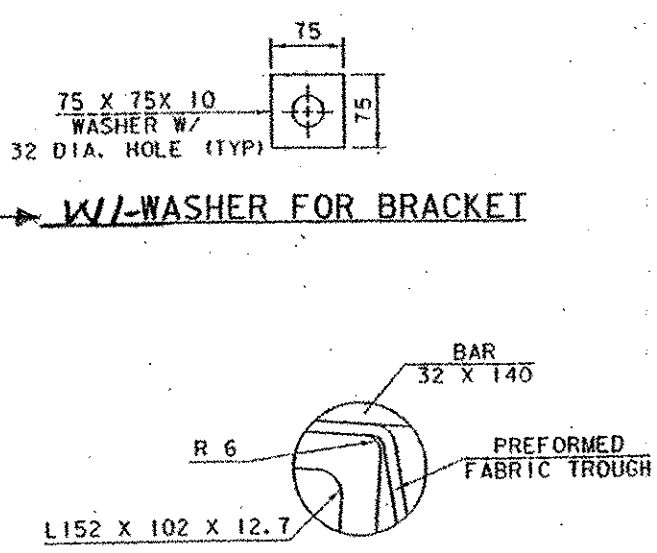
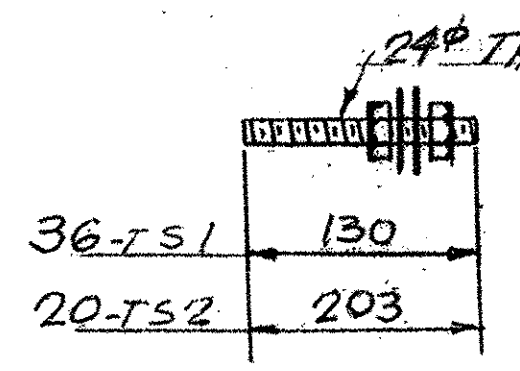
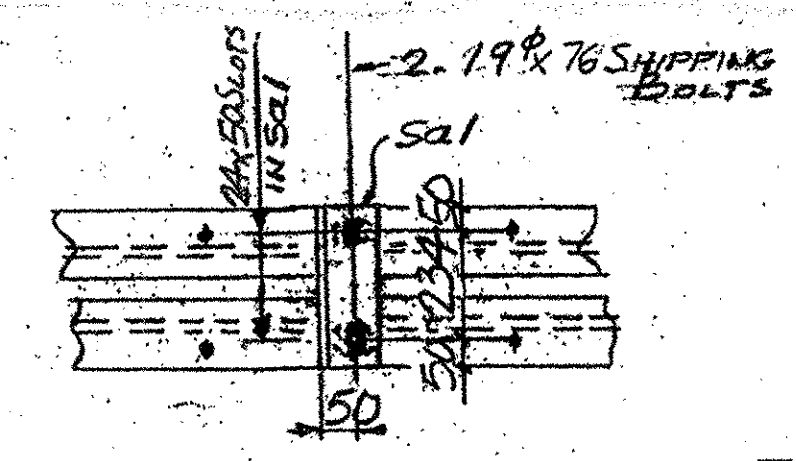


See Sheet J1-A for revised spacing cap screws

See Sheet J1-A for revised spacing

EJ-ONE REQ'D @ PIER

WORK THIS DWG. W/ DWG. J1A



RECEIVED
 MAR 2 1 2006
 RESUBMIT APPROVED AS NOTED
 BY CPW DATE 4/12/06

PLANS DRAWN USING
METRIC
 DIMENSIONS

OUT FOR APPROVAL	3-13-06
ISSUED TO SHOP	
FIELD & OFFICE	

REV.	REMARKS	DATE	DWN	CHK	APP	Q.A.	NO.	DIA.	LGT	TYPE	WASHER
	PROJECT NO. BRF-0241(33) 9/2 STATE PROJECT NO. 31										
	MATERIAL: M20 ANCH FERRULES: SEE PAGE. HOLES AS NOTED SHOP BOLTS: M20										
	SURFACE PREP. & PAINT: A325 GALV.										

GALVANIZED AFTER FAB (ASTM A325)

DESCRIPTION: EXP. JOINT @ PIER	DRAWN BY	DATE
JOB: VT. 12 OVER NEW ENGLAND GRR & 3RD BRANCH OF WHITE RIVER	JPF	2-06
BETHEL, VT.	CHKD BY	EJ
CUSTOMER: KUBRICKY CONSTR. CO.	APPROV BY	QA
CASCO BAY STEEL STRUCTURES, INC.	JOB NO.	279
75 SPRING HILL ROAD SACO, MAINE 04072	DRG. NO.	J1
PHONE (207) 282-7380 FAX. (207) 282-1179	REV.	Δ