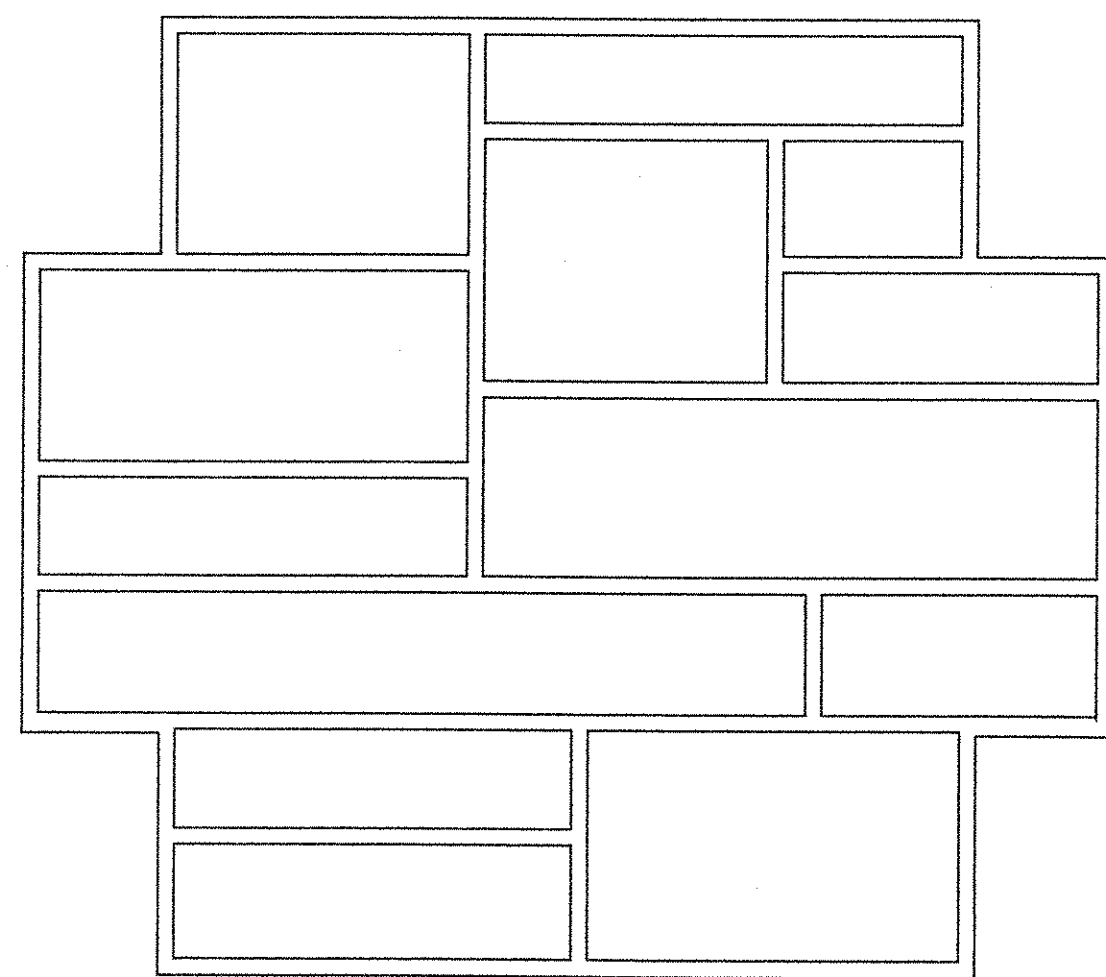
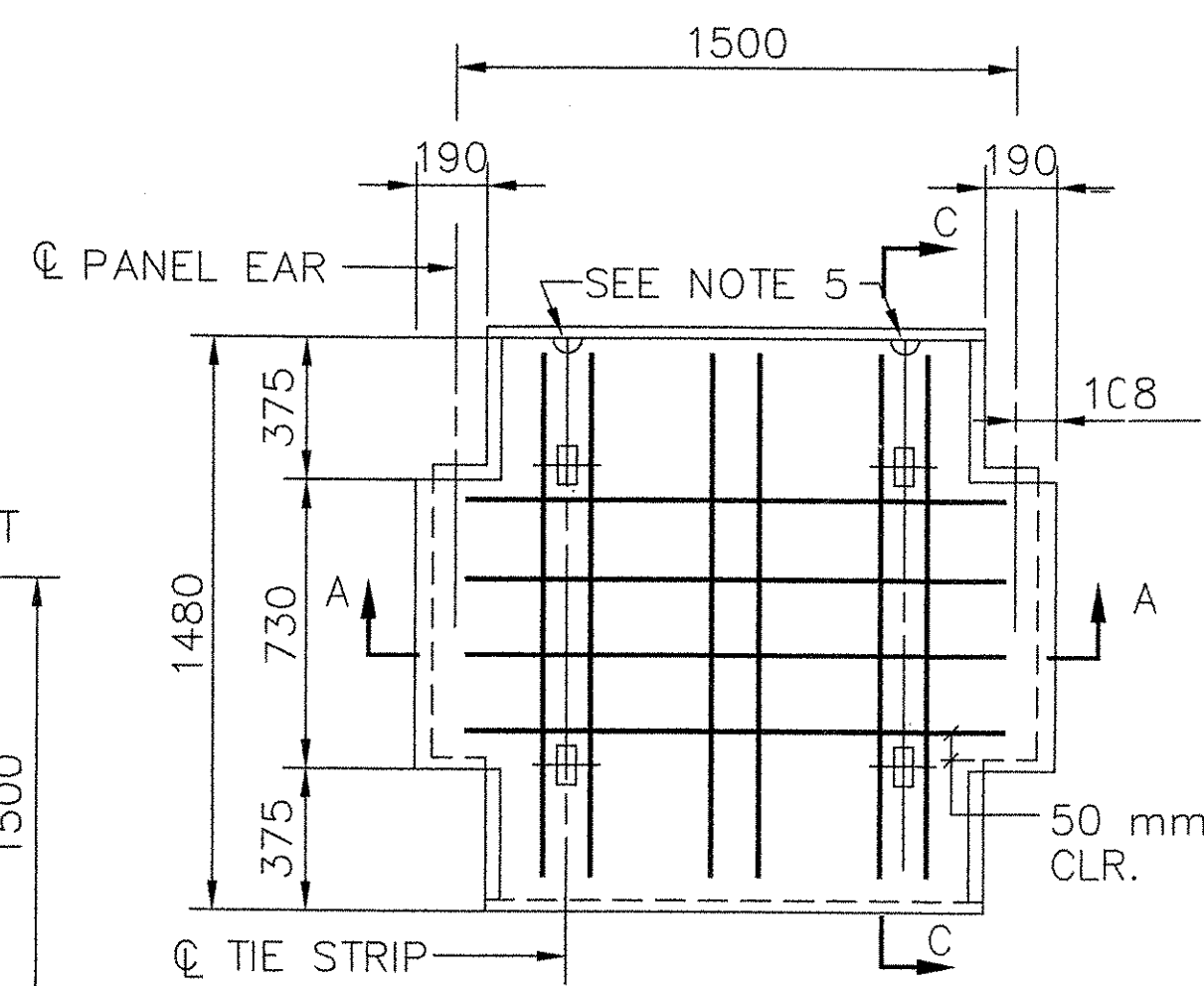


**TYPICAL PANEL LAYOUT
PARTIAL ELEVATION - FRONT FACE**
SCALE 1:25

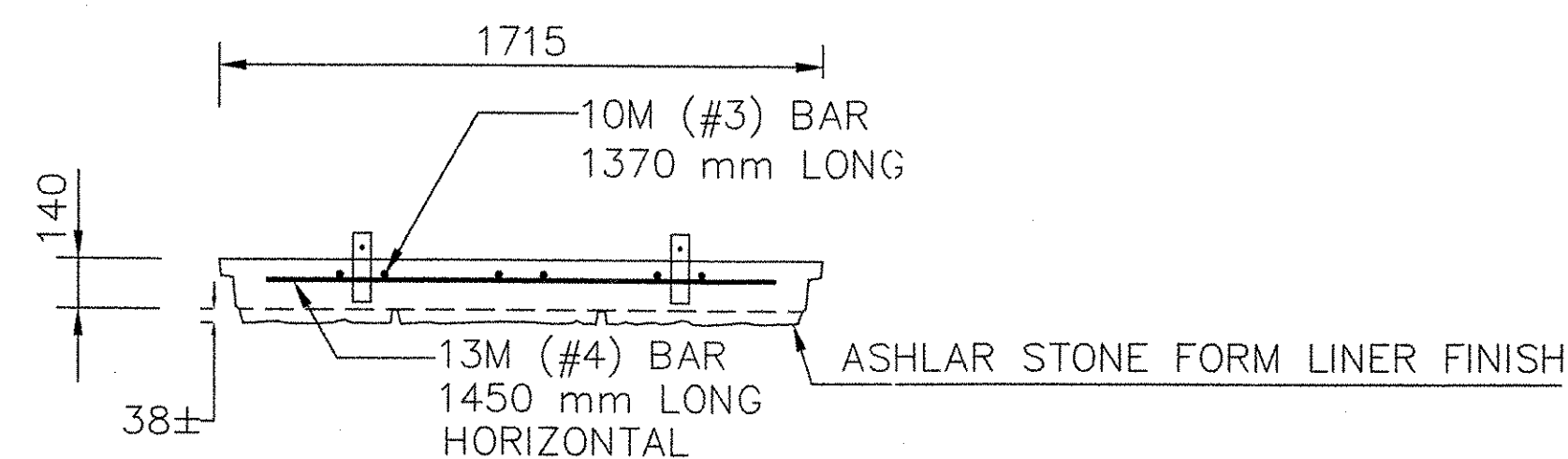


ASHLAR STONE PANEL FINISH
PANEL TYPE A
(LOOKING AT PANEL FACE)

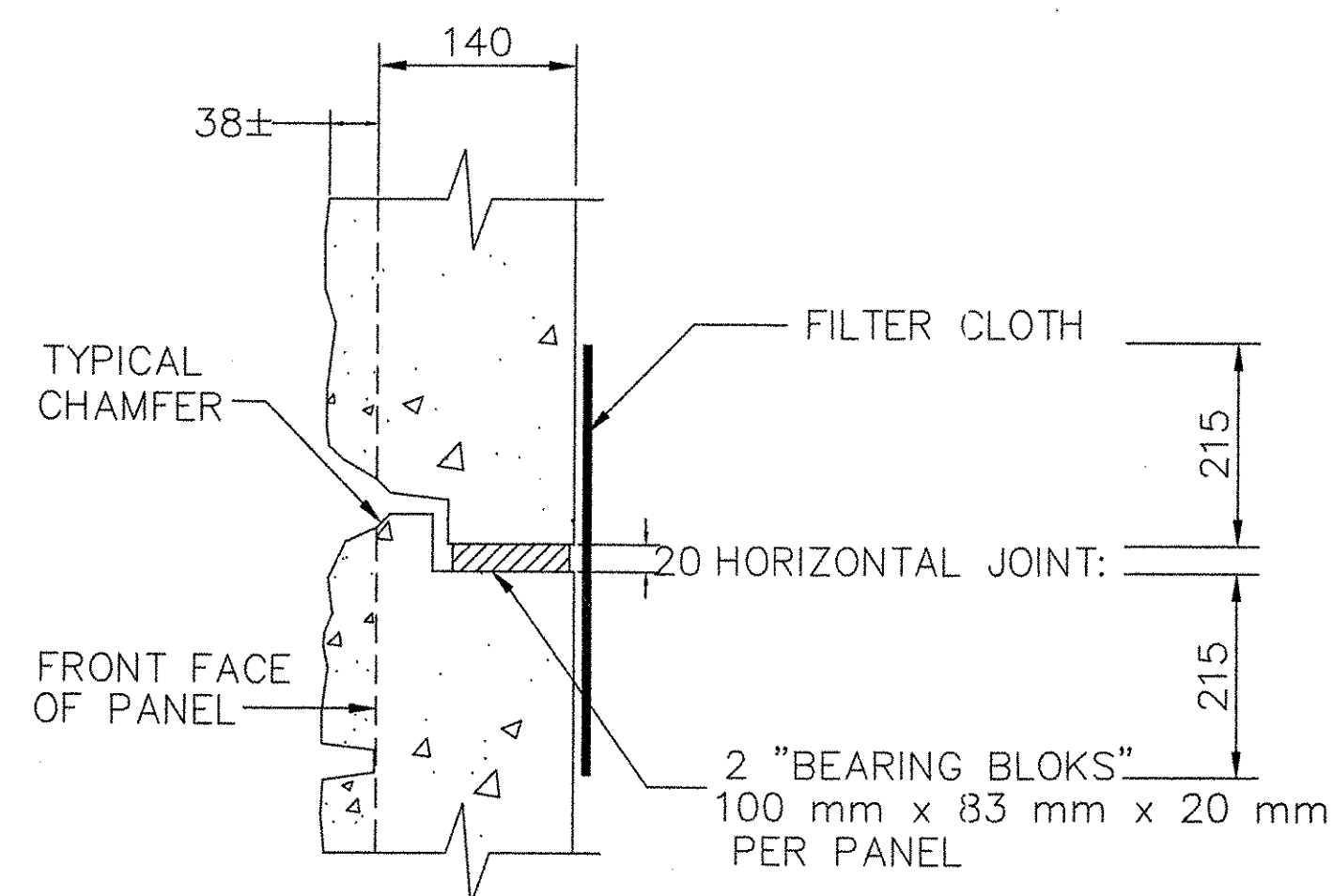
ALL DIMENSIONS ARE IN MILLIMETERS
UNLESS NOTED OTHERWISE



**PANEL TYPE "A"
WITH R6 REINFORCEMENT
BACK FACE VIEW**
SCALE 1:20

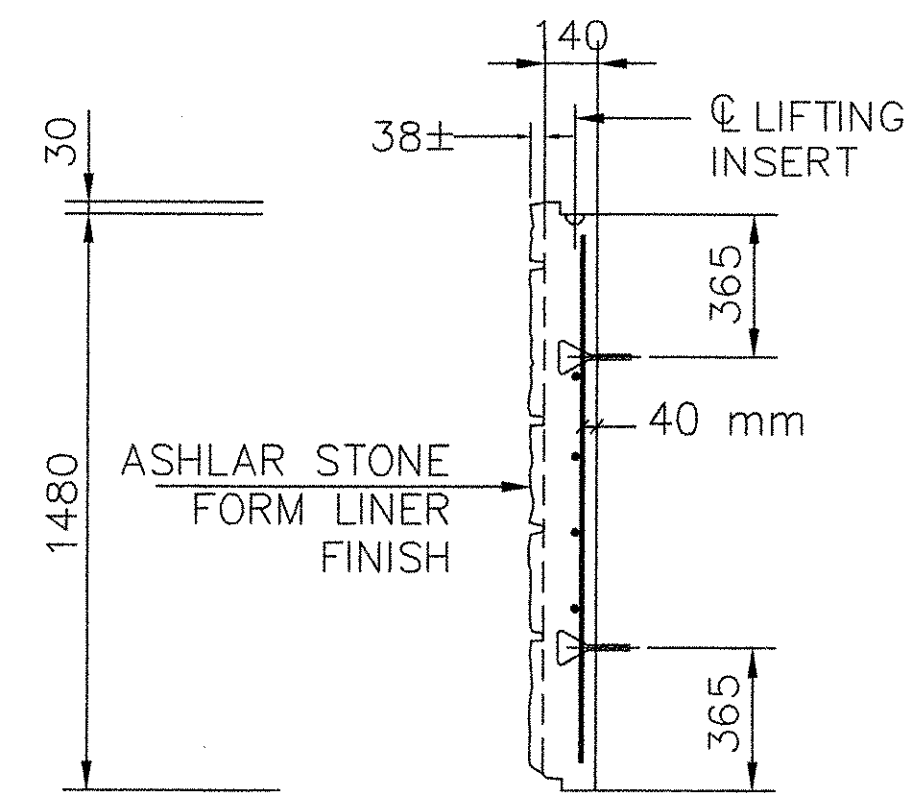


SECTION A-A
SCALE 1:20



SECTION 1-1
SCALE 1:5

ALL DIMENSIONS ARE IN MILLIMETERS
UNLESS NOTED OTHERWISE

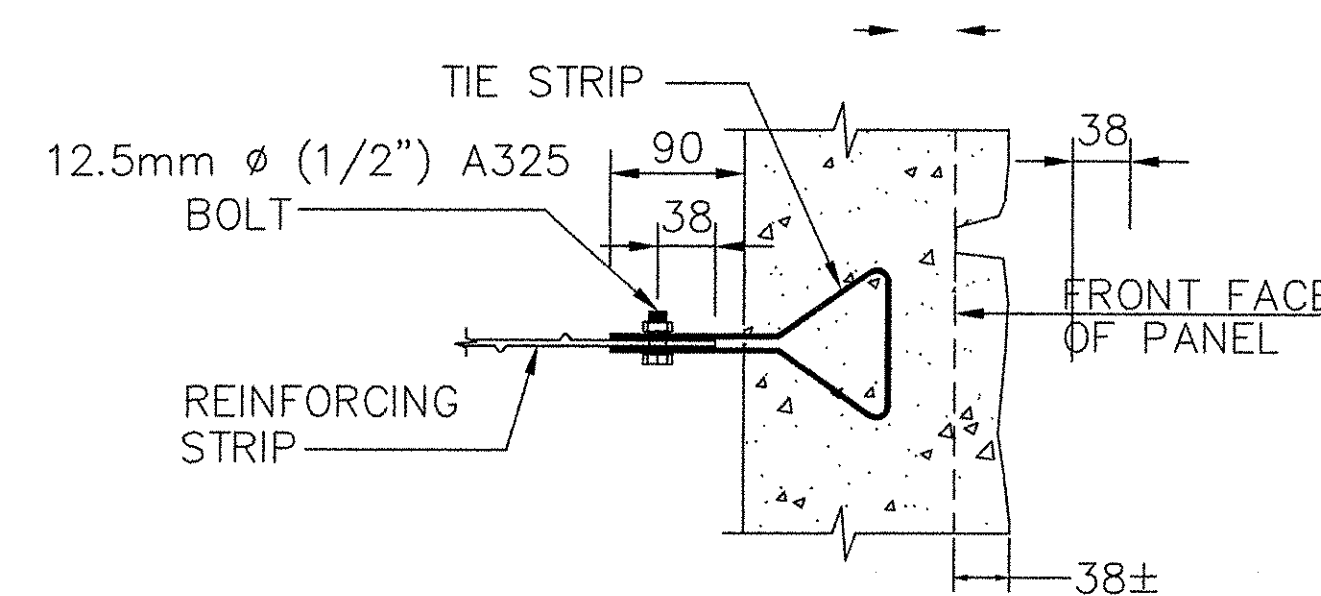


SECTION C-C
SCALE 1:20

PANEL THICKNESS	REINFORCEMENT DESIGNATION	PANEL REINFORCEMENT	MAXIMUM ALLOWABLE HORIZONTAL STRESS AT FACING (KPa)
140+38	R6	6-10M(#3) Ø VERT. 4-13M(#4) Ø HORIZ.	77 kPa

NOTES:

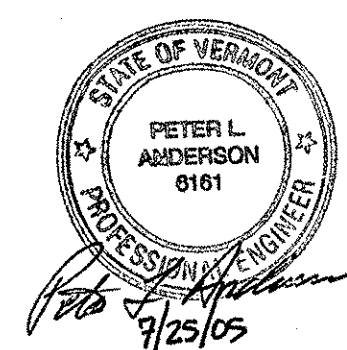
- REINFORCING STEEL TO BE A615 GRADE 420. EPOXY COATED
- 28 DAY COMPRESSIVE STRENGTH OF CONCRETE = 27.6 MPa
- 10 mm x 10 mm CHAMFER SHALL BE PROVIDED ON ALL EXPOSED EDGES (FRONT FACE ONLY).
- ALL PANEL TYPES AND OTHER RELATED ELEMENTS WILL BE DETAILED ON SHOP DRAWINGS.
- ALL PANELS SHALL HAVE TWO LIFTING INSERTS OF ONE TON CAPACITY EACH.
- FACING PANEL FINISH SHALL BE AN ASHLAR STONE FORM LINER FINISH. THE CONCRETE SHALL BE FIELD STAINED WITH APPROVED DYE.
- PANEL DESIGN THICKNESS IS 140 mm.
- BEARING BLOKS SHALL BE EPDM RUBBER PADS WITH DUROMETER HARDNESS OF 80±5, CONFORMING TO ASTM D2000.
- SHIMS SHALL BE EPDM RUBBER PADS WITH DUROMETER HARDNESS OF 80±5, CONFORMING TO ASTM D2000. NOMINAL DIMENSION OF SHIM IS 50mm X 85mm X 5mm THICK.
- SEE CONSTRUCTION MANUAL FOR ADDITIONAL INFORMATION.



CONNECTION DETAIL
SCALE 1:5

RECEIVED
OK'D BY *KMH* OK'D BY *AG*
JUL 28 2005
RESUBMIT APPROVED
BY *CPW* DATE *8/3/05*

CERTIFIED WITH RESPECT TO THE INTERNAL STABILITY OF REINFORCED EARTH STRUCTURES ONLY



VT AOT PROJ. NO. BRO 1446(26)

This drawing contains information proprietary to The Reinforced Earth Company, and is being furnished for the use of VT AOT only in connection with this project, and the information contained herein is not to be transmitted to any other organization unless specifically authorized in writing by The Reinforced Earth Company. The Reinforced Earth Company is exclusive licensee in the United States under patents issued to Henri Vidal, and the furnishing of this drawing does not constitute an expressed or implied license under the Vidal patents.

The design contained on these drawings is based on information provided by the owner. On the basis of this information, The Reinforced Earth Company has designed, and is responsible for the internal stability of the structure only. External stability, including foundation and slope stability, is the responsibility of the owner.

The Reinforced Earth Company
8614 Westwood Center Drive Suite 110C, Vienna, Virginia 22182 (703) 821-1175

"REINFORCED EARTH" is the registered trademark of The Reinforced Earth Company.

DESIGNED BY: JMJC		PROJECT NAME BRIDGE IMPROVEMENT VT 12 OVER NEW ENGLAND CENTRAL RAILROAD	DATE 7/21/2005
PROJECT ENGR: JMJC		LOCATION BETHEL VERMONT	CONTRACT NO. 11843
CHECKED BY: KPB		OWNER VT AOT	DRAWING NO. 5 OF 5
ENG. MANAGER REV. DATE		DRAWING COVERS STANDARD PANELS	SCALE AS SHOWN

C:\PROJ\NE\11843\11843 STANDARD PANELS.DWG