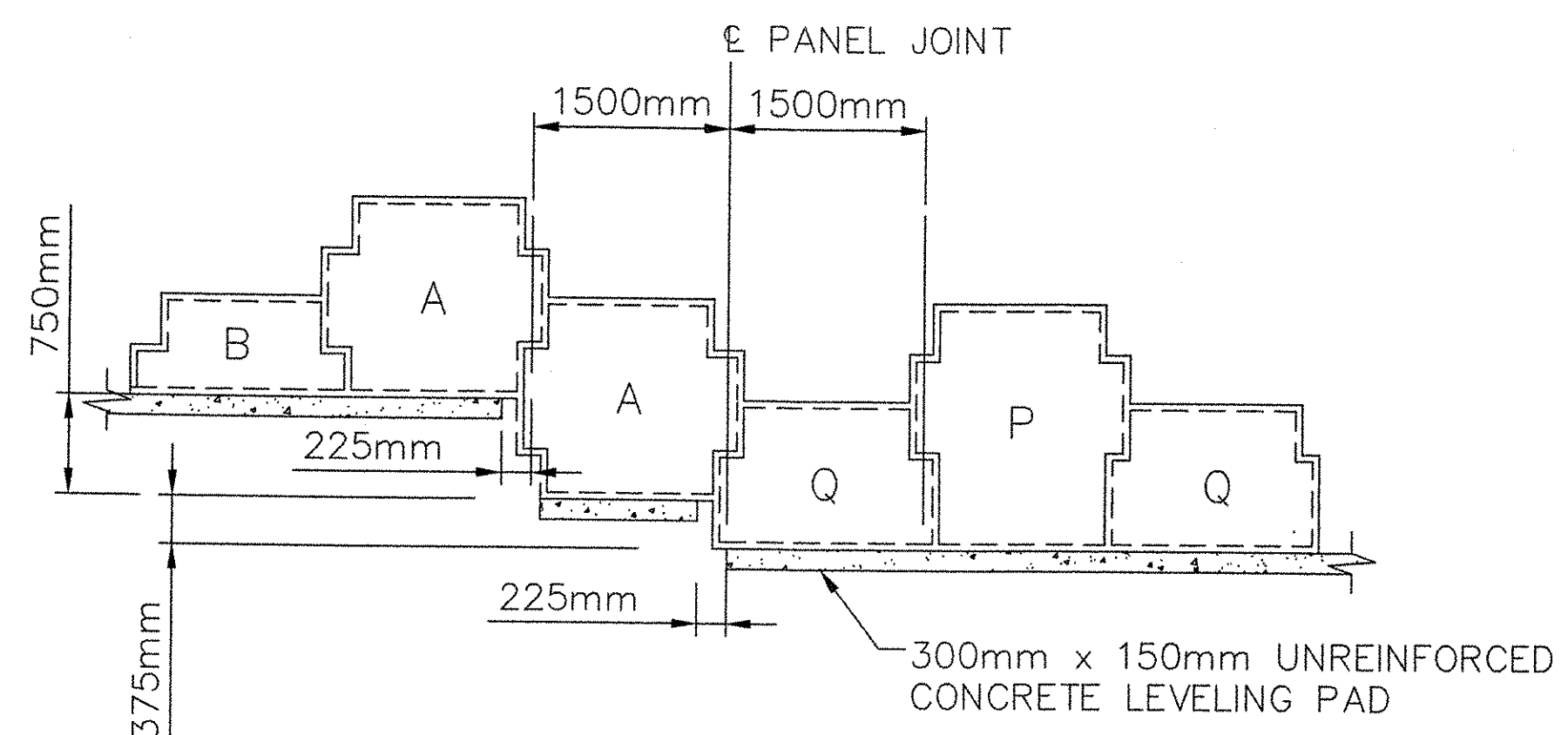


NOTES:

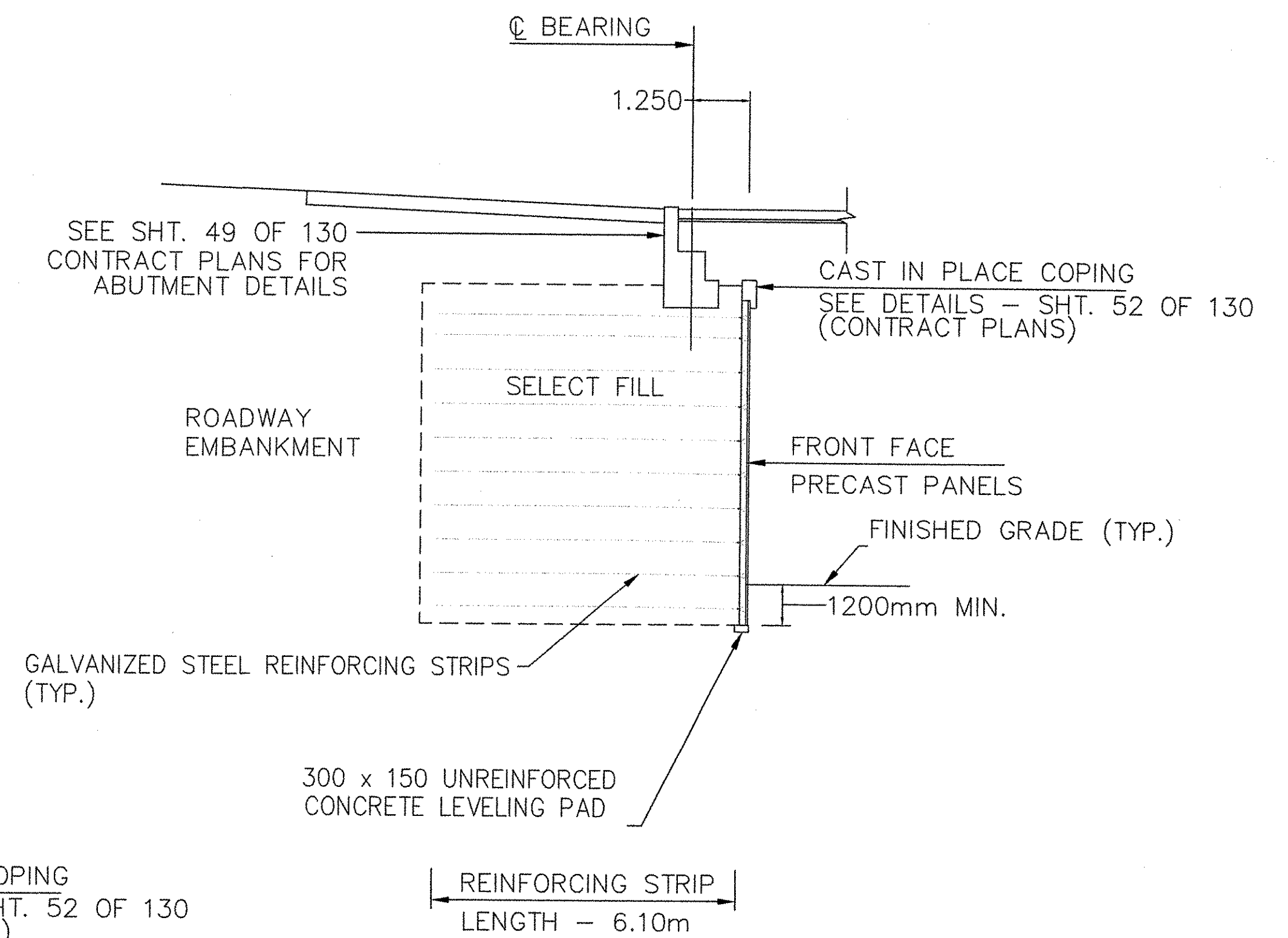
1. STRIPS OF FILTER CLOTH SHALL BE PLACED ON BACK FACE OF PANEL, OVER PANEL JOINTS. FILTER CLOTH SHALL BE ADHERED TO BACK FACE OF PANELS USING AN ADHESIVE COMPOUND SUPPLIED BY THE REINFORCED EARTH COMPANY.
2. THE CONTRACTOR SHALL PROVIDE THE RESIDENT ENGINEER WITH THE MANUFACTURERS TECHNICAL DATA SHEET AND APPLICATION INSTRUCTIONS FOR THE ADHESIVE COMPOUND.

**FILTER CLOTH DETAIL
PARTIAL ELEVATION - BACK FACE**

SCALE 1:50

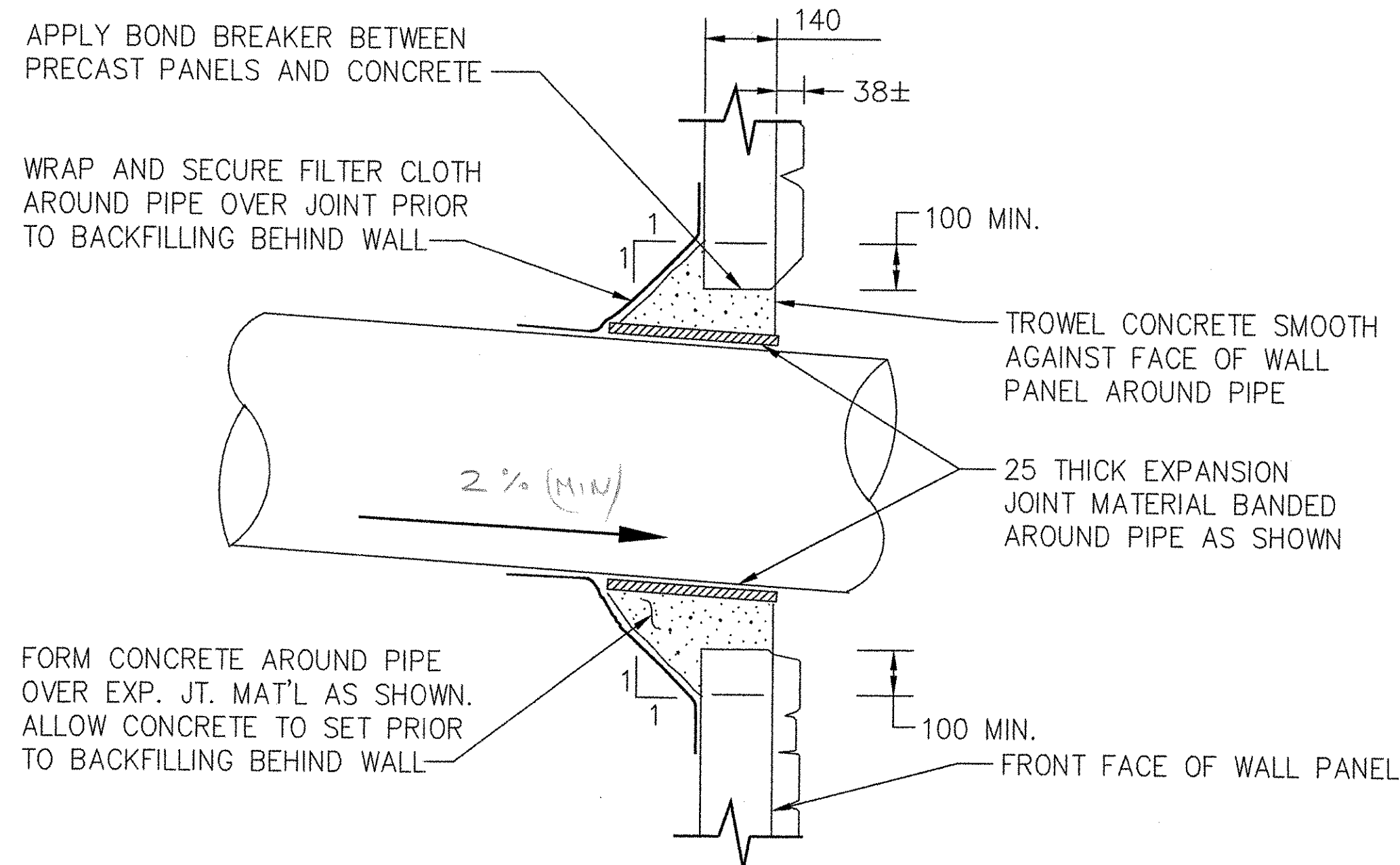


TYPICAL LEVELING PAD STEP DETAIL



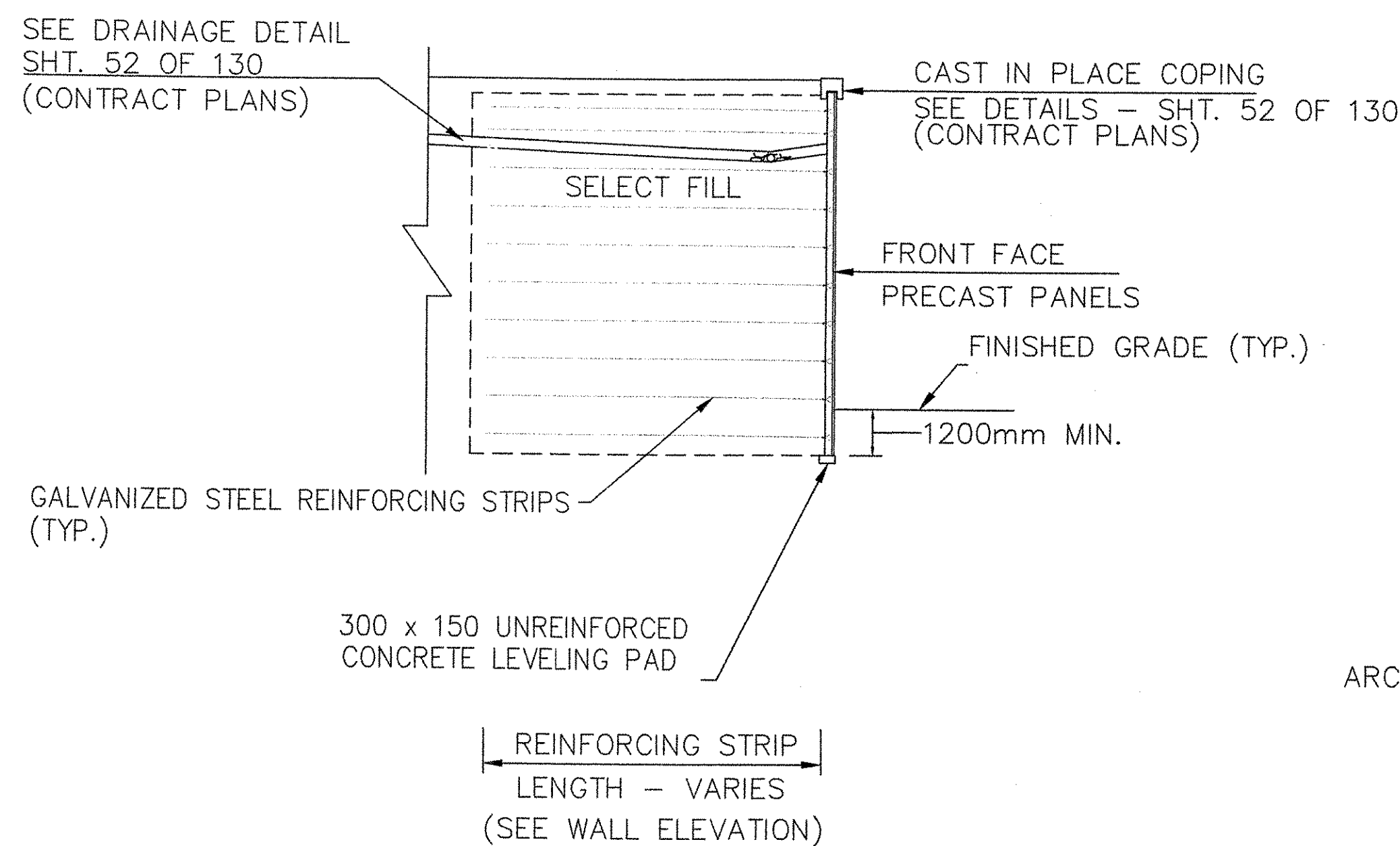
**TYPICAL SECTION
AT ABUTMENT**

SCALE: 1 : 100



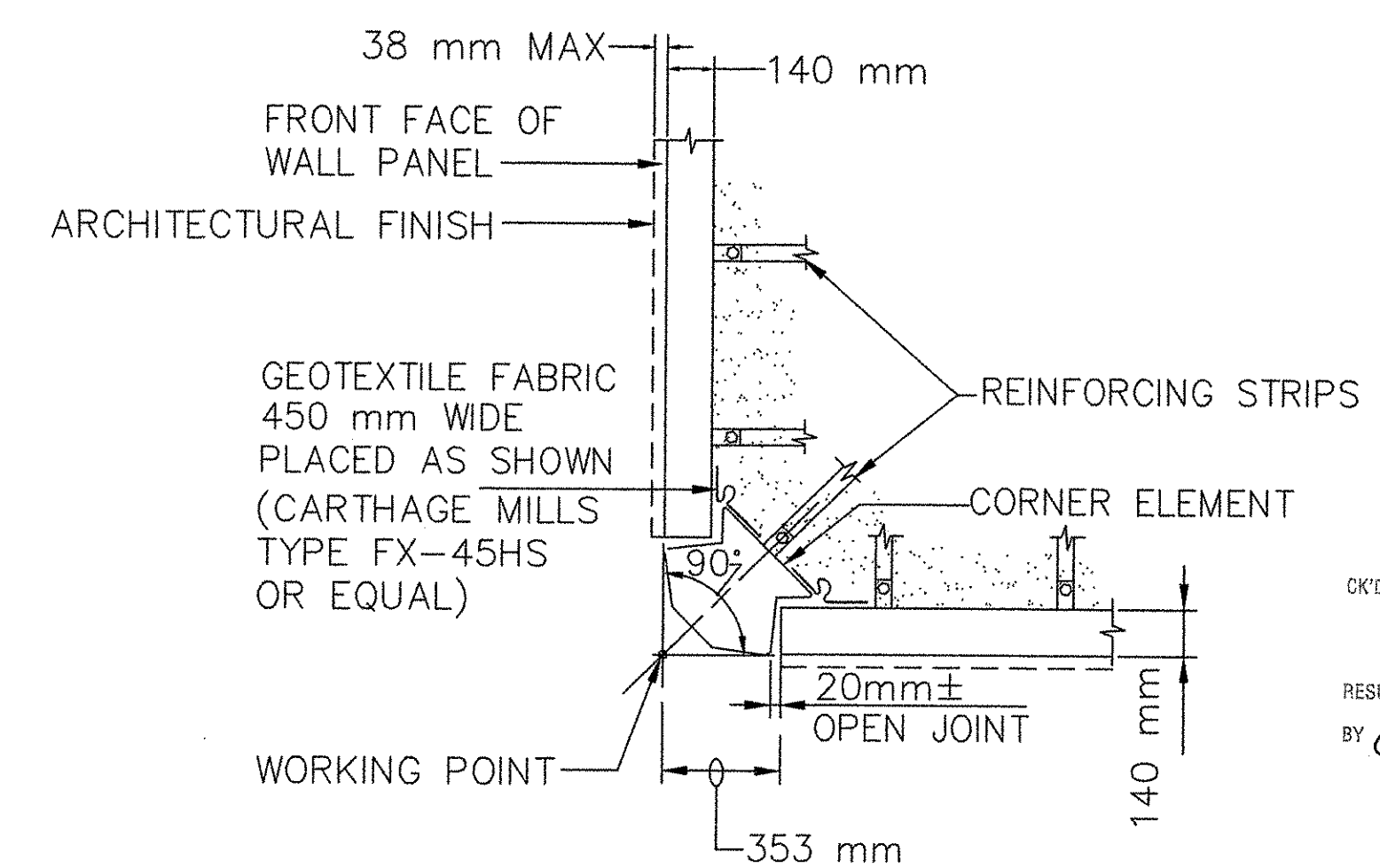
PIPE PENETRATION AT WALL FACE DETAIL

SCALE: 1 : 100



**TYPICAL SECTION
AT WINGWALLS**

SCALE: 1 : 100

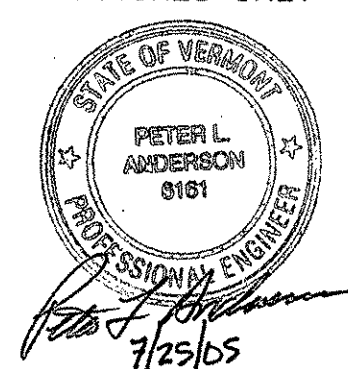


90° CORNER ELEMENT DETAIL

SCALE 1:20

RECEIVED
OK'D BY *K.M.H.* OK'D BY *A.G.*
JUL 28 2005
RESUBMIT APPROVED
BY *CPW* DATE *8/31/05*

CERTIFIED WITH
RESPECT TO THE
INTERNAL STABILITY
OF REINFORCED EARTH
STRUCTURES ONLY



NOTE:
SEE SHEET 52 OF 130 IN THE CONTRACT PLANS
FOR C.I.P. COPING DETAILS

C:\PROJ\NET\11843\11843.TYP SECT.DWG

This drawing contains information proprietary to The Reinforced Earth Company, and is being furnished for the use of VT AOT only in connection with this project, and the information contained herein is not to be transmitted to any other organization unless specifically authorized in writing by The Reinforced Earth Company. The Reinforced Earth Company is exclusive licensee in the United States under patents issued to Henri Vidal, and the furnishing of this drawing does not constitute an expressed or implied license under the Vidal patents.

The design contained on these drawings is based on information provided by the owner. On the basis of this information, The Reinforced Earth Company has designed, and is responsible for the internal stability of the structure only. External stability, including foundation and slope stability, is the responsibility of the owner.

The Reinforced Earth Company
8614 Westwood Center Drive Suite 1100, Vienna, Virginia 22182 (703) 821-1175

"REINFORCED EARTH" is the registered trademark of The Reinforced Earth Company.

DESIGNED BY: JMJC		PROJECT NAME	BRIDGE IMPROVEMENT VT 12 OVER NEW ENGLAND CENTRAL RAILROAD	DATE	7/21/2005
PROJECT ENGR: JMJC		LOCATION	BETHEL VERMONT	CONTRACT NO.	11843
CHECKED BY: KPB		OWNER	VT AOT	DRAWING NO.	3 OF 5
ENG. MANAGER	REV. DATE	DESCRIPTION	DRAWING COVERS	SCALE	AS SHOWN