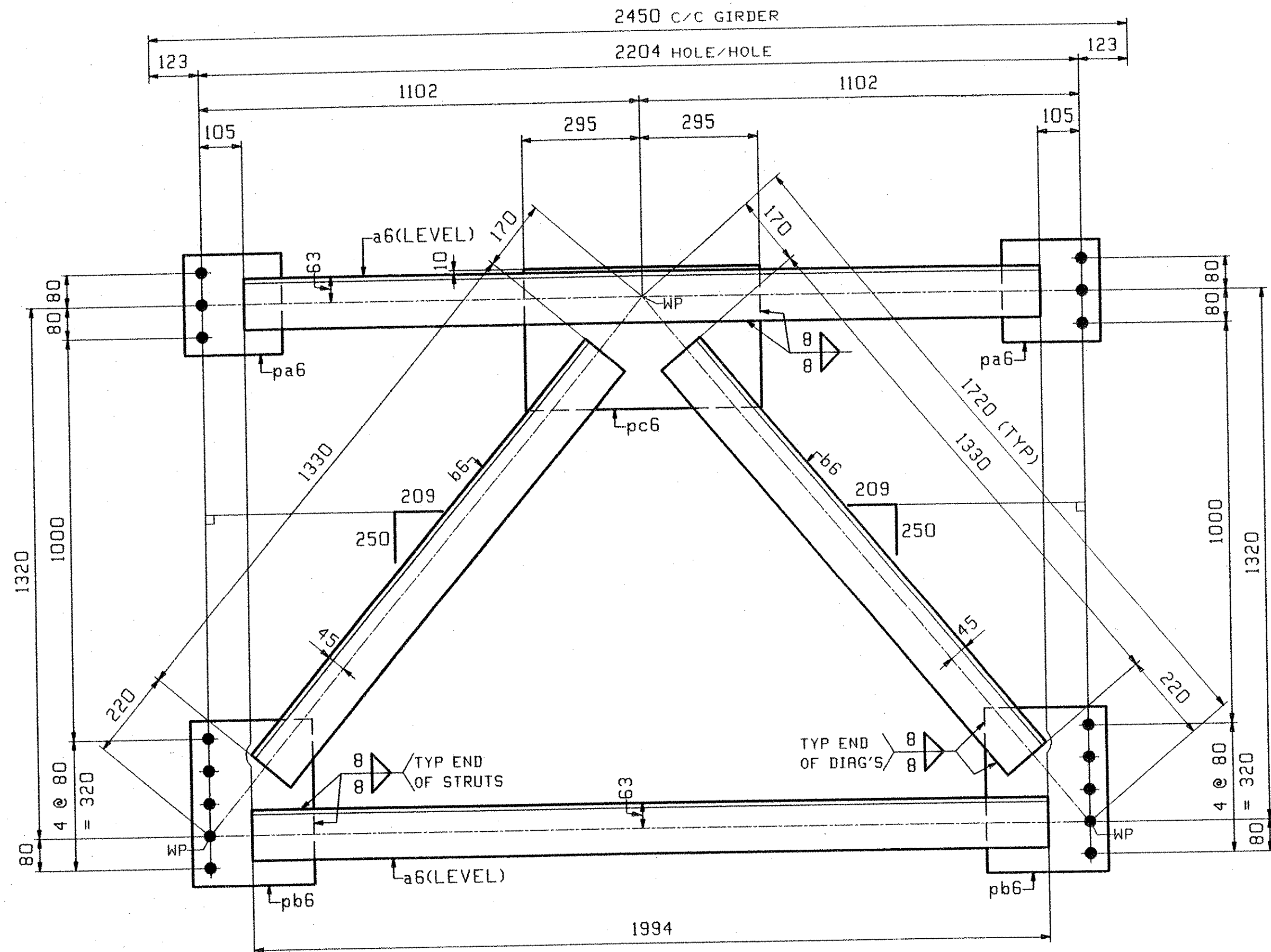
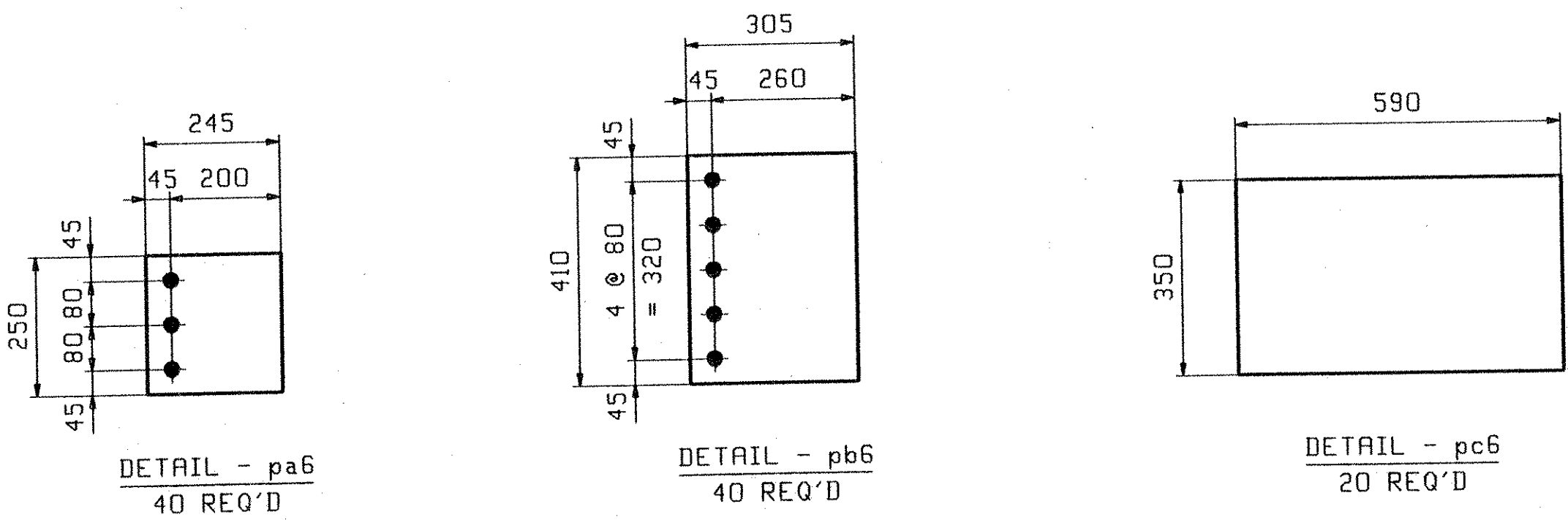


JOB NO.		DRAWING NO.		REV.						
		6								
PAGE	LINE	MARK	QTY	MARK	MATERIAL	LENGTH		REMARKS	WT	PROCUREMENT NOTES
						m	mm			
		BCF1	20		INT CROSSFRAMES				224 kg 492 lbs	
2	J		40	a6	L 127x127x12.7	1	994			
2	K		40	b6	L 127x127x12.7	1	330			
2	L		40	pa6	PL 14x245	0	250			
2	M		40	pb6	PL 14x305	0	410			
2	N		20	pc6	PL 14x350	0	590			



20 ~ CROSSFRAMES ~ 6CF1



OUT FOR APPROVAL	7-5-05										
OUT FOR APPROVAL											
ISSUED TO SHOP											
FIELD & OFFICE											
REV.	REMARKS	DATE	DWN	CHK	APP	Q.A.	NO.	DIA.	LGT	TYPE	WASHER
	MATERIAL:	ELECTRODES:									
	M270M GR 345W										NONE
	SURFACE PREP. & PAINT:										
	SEE DRAWING GNI										
DESCRIPTION:		INT. CROSSFRAMES				DRAWN BY		DATE			
JOB:		VT ROUTE 12 BRIDGE OVER WHITE RIVER				JTB		05/28			
		BRIDGE NO: 31 (SPAN #2)				CHKD BY					
		TOWN OF BETHEL, VERMONT				TJB		06/22			
		COUNTY OF WINDSOR				APPROV BY					
		CONTRACTOR: KUBRICKY CONST CORP.				SUPERVISOR		W. J. GATTI			
PROJ NO.		BRF0241(33) C/2				Q.A.					
CUSTOMER:		VERMONT AOT									
		CASCO BAY STEEL STRUCTURES, INC.				JOB NO.		DRG. 1			
		75 SPRING HILL ROAD				SACO, MAINE 04072		270		6	
		PHONE (207) 282-7360				FAX (207) 282-1179		14355		REV. 1	

RECEIVED
 JUL 14 2005
 BY CPW DATE 7/28/05