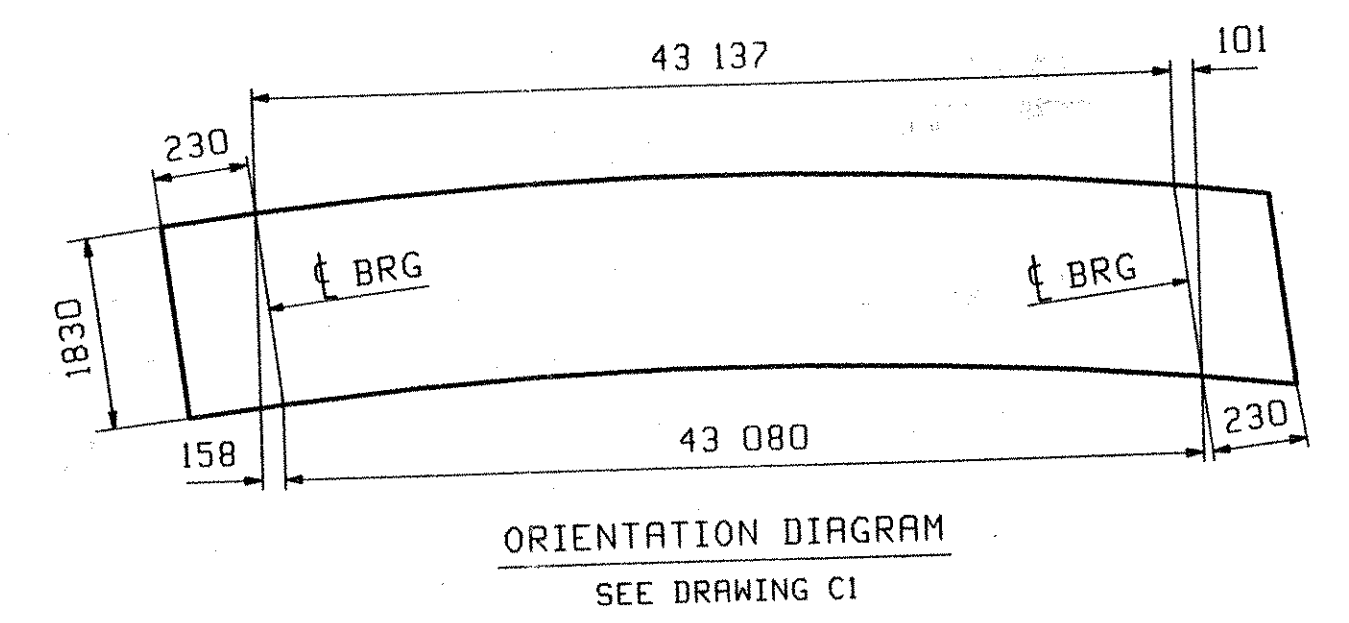
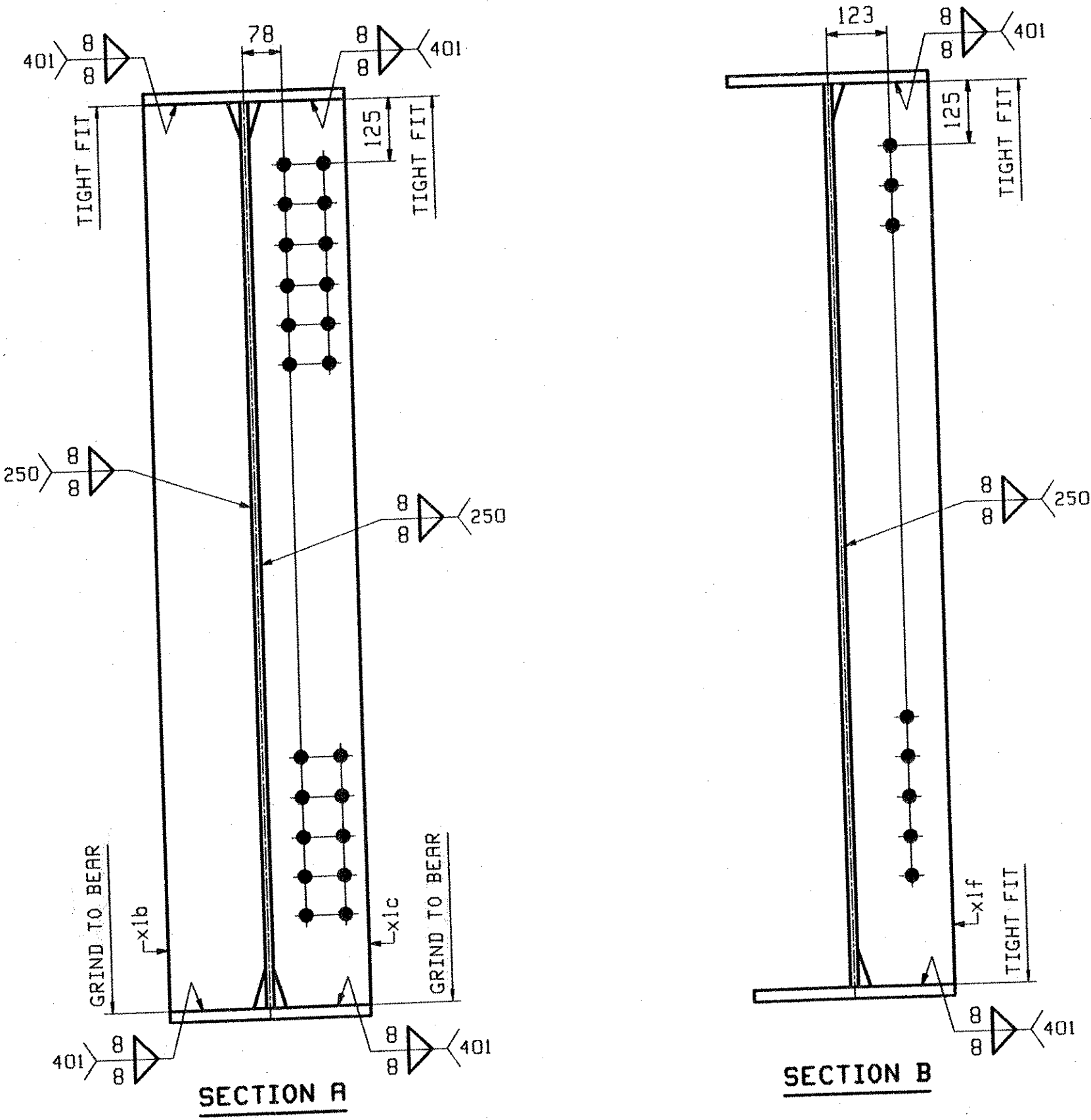
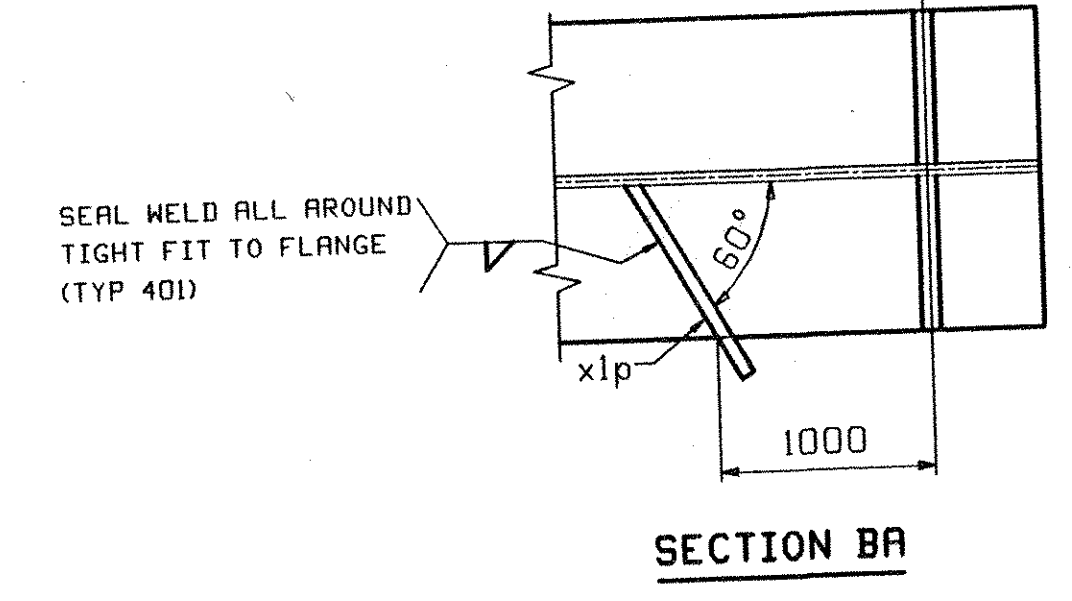


ABM INFO		SHIP		BILL OF MATERIAL				JOB NO.	DRAWING NO.	REV.
PAGE	LINE	MARK	QTY	MARK	MATERIAL	LENGTH		REMARKS	WT	PROCUREMENT NOTES
						m	mm			
		5G5	1		GIRDER				10054 kg 28824 lb	
1	E		1	wa	PL 16x1830	22	409	(M270M-345WT2)	(H2-3)	
1	G		1	wb	PL 16x1830	21	312	(M270M-345WT2)	(H2-3)	
1	L		1	ta	PL 22x406	21	336			
1	J		1	tb	PL 22x406	22	261			
1	C		1	ba	PL 22x406	9	040	(M270M-345WT2)	(H2-3)	
1	A		1	bb	PL 40x406	25	460	(M270M-345WT2)	(H2-3)	
1	C		1	bc	PL 22x406	9	040	(M270M-345WT2)	(H2-3)	
2	B		2	x1b	PL 22x195	1	836	MIE		
2	B		2	x1c	PL 22x195	1	836	MIE		
2	C		5	x1f	PL 14x195	1	830			
2	D		1	x1p	PL 6x72	0	279			



**ONE - GIRDER - 5G5**

FOR GIRDER STANDARD DETAILS SEE DRAWING X1.  
 FOR CAMBER DIAGRAM SEE DRAWING C1.  
 FOR GENERAL NOTES SEE DRAWING GNI.  
 H2-3 DENOTES MATERIAL SUBJECT TO CHARPY V-NOTCH TESTING.



OUT FOR APPROVAL	7-5-05											
OUT FOR APPROVAL												
ISSUED TO SHOP												
FIELD & OFFICE												
REV.	REMARKS	DATE	DWN	CHK	APP	Q.A.	NO.	DIA.	LGT	TYPE	WASHEL	
MATERIAL:	M270M GR 345W	ELECTRODES:		HOLES:	15 16	24mm				SHOP BOLTS:	NONE	
SURFACE PREP. & PAINT:												
SEE DRAWING GNI												
DESCRIPTION:	GIRDER - 5G5									DRAWN BY	DF E	
JOB:	VT ROUTE 12 BRIDGE OVER WHITE RIVER									JTB	05 31	
	BRIDGE NO: 31 (SPAN #2)									CHKD BY		
	TOWN OF BETHEL, VERMONT									TJB	06 22	
	COUNTY OF WINDSOR									APPROV BY		
	CONTRACTOR: KUBRICKY CONST CORP.									SUPERVISOR	M. J. GAT	
PROJ NO.	BRF0241(33) C/2									Q.A.		
CUSTOMER: VERMONT ROT												
<b>CASCO BAY STEEL STRUCTURES, INC.</b>												
75 SPRING HILL ROAD						SACO, MAINE 04072			JOB NO.	270	DRG NO.	5
PHONE (207) 282-7360						FAX (207) 282-1179			14255	REV.	△	

RECEIVED  
 JUL 14 2005  
 BY CPW DATE 7/28/05