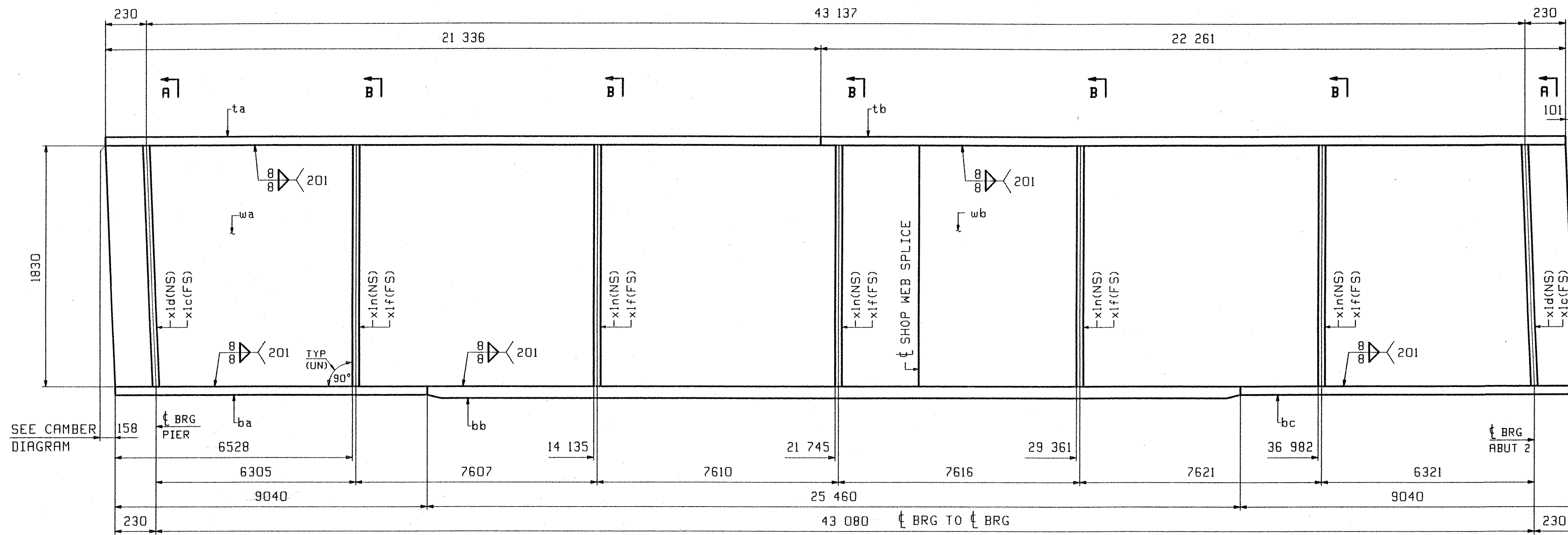
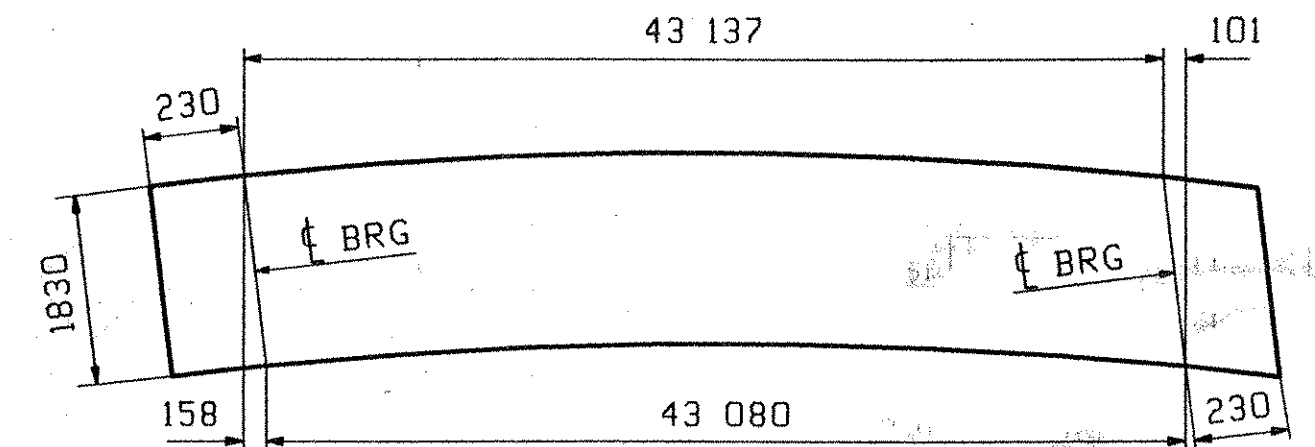


ABM INFO		SHIP		BILL OF MATERIAL		JOB NO.	DRAWING NO.	REV.	
PAGE	LINE	MARK	QTY	MARK	MATERIAL	LENGTH	REMARKS	WT	PROCUREMENT NOTES
						m	mm		
		4G4	1		GIRDER			1259 kg	40251 lb
1	E		1	wa	PL 16x1830	22	409		(H2-3)
1	G		1	wb	PL 16x1830	21	312		(H2-3)
1	L		1	ta	PL 22x406	21	336		
1	J		1	tb	PL 22x406	22	261		
1	C		1	ba	PL 22x406	9	040		(H2-3)
1	A		1	bb	PL 40x406	25	460		(H2-3)
1	C		1	bc	PL 22x406	9	040		(H2-3)
2	B		2	xlc	PL 22x195	1	836		MIF
2	B		2	xld	PL 22x195	1	836		MIF
2	C		5	xlf	PL 14x195	1	830		
2	C		5	xln	PL 14x195	1	830		



SEE CAMBER DIAGRAM

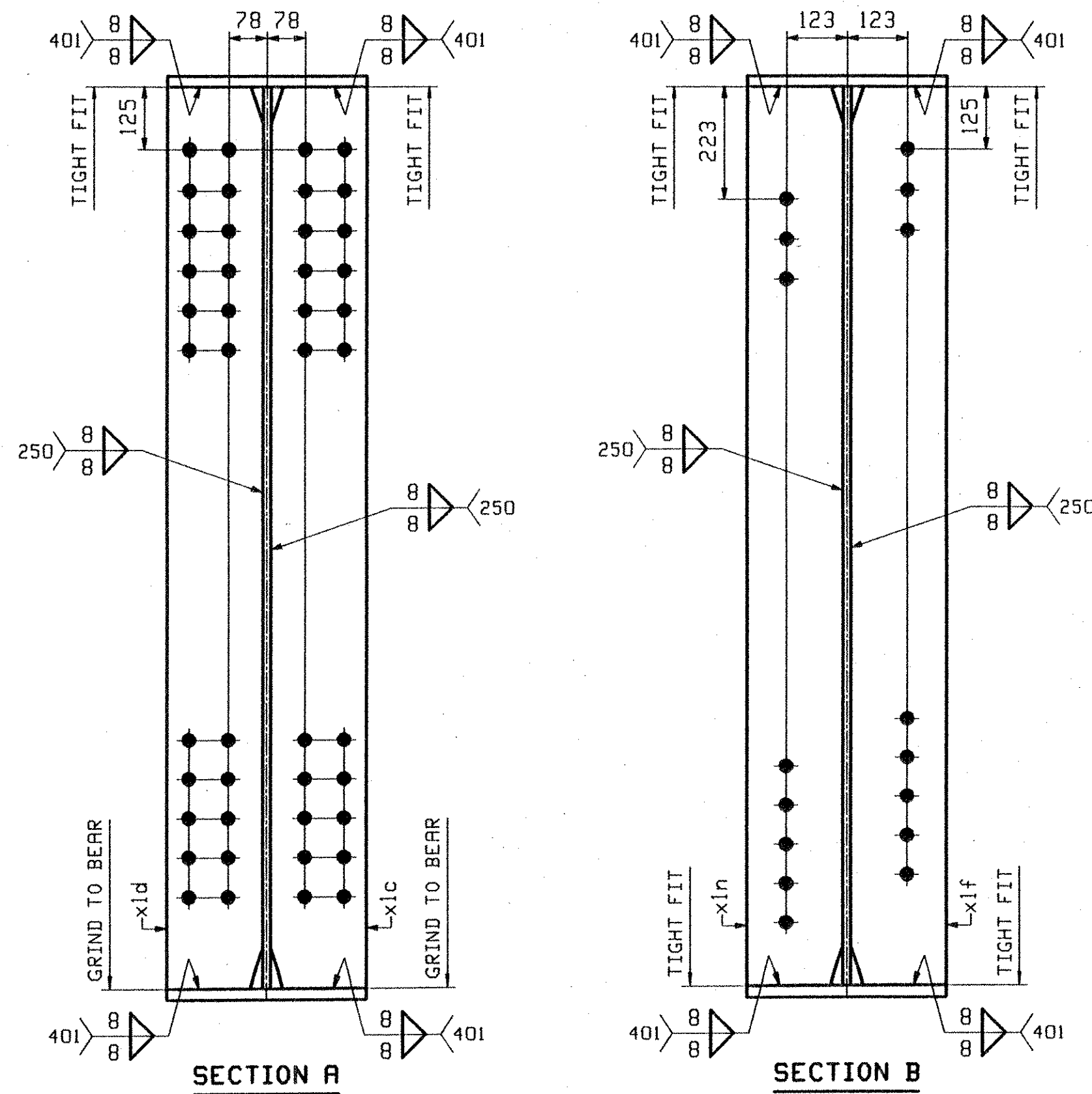
SEE CAMBER DIAGRAM



ORIENTATION DIAGRAM  
SEE DRAWING C1

**ONE - GIRDER - 4G4**

FOR GIRDER STANDARD DETAILS SEE DRAWING XI.  
FOR CAMBER DIAGRAM SEE DRAWING C1.  
FOR GENERAL NOTES SEE DRAWING GNI.  
H2-3 DENOTES MATERIAL SUBJECT TO CHARPY V-NOTCH TESTING.



OUT FOR APPROVAL	7-5-05											
OUT FOR APPROVAL												
ISSUED TO SHOP												
FIELD & OFFICE												
REV.	REMARKS	DATE	DWN	CHK	APP	Q.A.	NO.	DIA.	LGT	TYPE	WASH	R
MATERIAL:	M270M GR 345k	ELECTRODES:		HOLES:	15 16	24				SHOP BOLTS:	NONE	
SURFACE PREP. & PAINT:												
SEE DRAWING GNI												
DESCRIPTION: GIRDER - 4G4										DRAWN BY		DATE
JOB: VT ROUTE 12 BRIDGE OVER WHITE RIVER										JTB		05/30
BRIDGE NO: 31 (SPAN #2)										CHKD BY		
TOWN OF BETHEL, VERMONT										TJB		06/12
COUNTY OF WINDSOR										APPROV BY		
CONTRACTOR: KUBRICKY CONST CORP.										SUPERVISOR		W. J. GHTT
PROJ NO. BRFO241(33) C/2										Q.A.		
CUSTOMER: VERMONT ROT												
<b>CASCO BAY STEEL STRUCTURES, INC.</b>										JOB NO.		DRG. NO.
75 SPRING HILL ROAD										270		4
SACO, MAINE 04072										14155		REV.
PHONE (207) 282-7360										FAX (207) 282-1179		

RECEIVED  
OK'D BY *KMY* OK'D BY *HES*  
JUL 14 2005  
RESUBMIT APPROVED *A. H. H.*  
BY *CPW* DATE 7/28/05