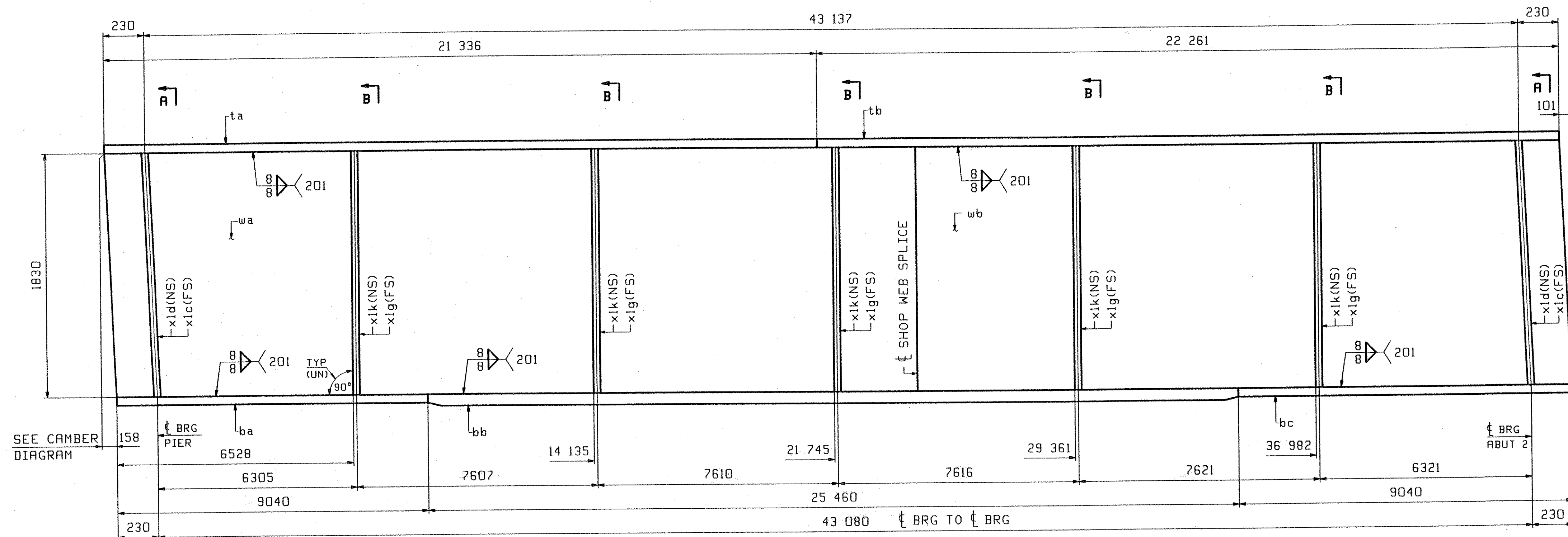
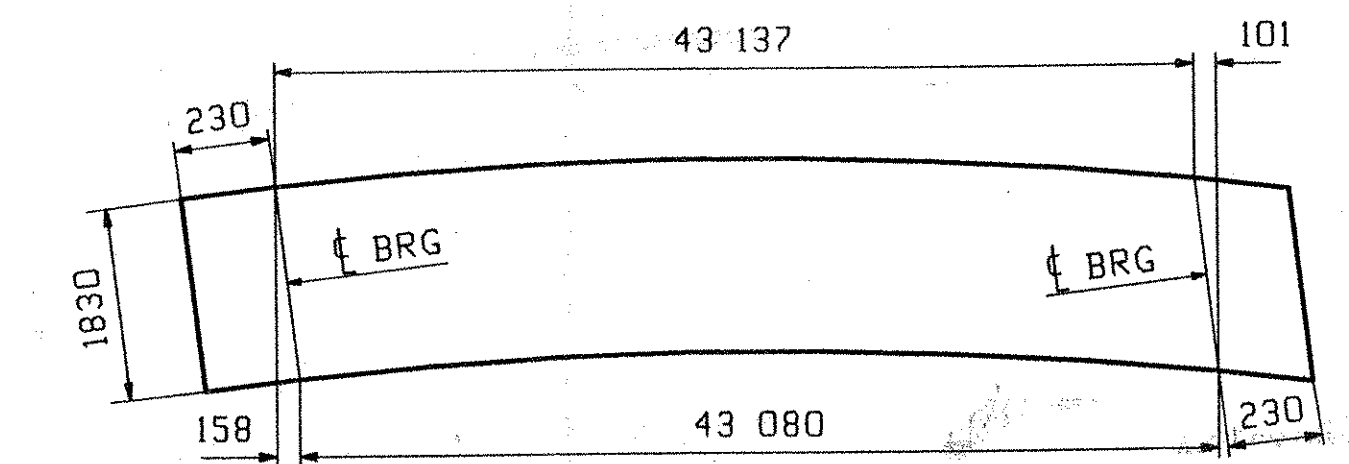


ABM INFO		SHIP	BILL OF MATERIAL				JOB NO.	DRAWING NO.	REV.
PAGE	LINE	MARK	QTY	MARK	MATERIAL	LENGTH m mm	REMARKS	WT	PROCUREMENT NOTES
		3G3	1		GIRDER				18259 kg 43264 lb
1	E		1	wa	PL 16x1830	22 409	(H270M-345HT2)	(H2-3)	
1	G		1	wb	PL 16x1830	21 312	(H270M-345HT2)	(H2-3)	
1	L		1	ta	PL 22x406	21 336			
1	J		1	tb	PL 22x406	22 261			
1	C		1	ba	PL 22x406	9 040	(H270M-345HT2)	(H2-3)	
1	A		1	bb	PL 40x406	25 460	(H270M-345HT2)	(H2-3)	
1	C		1	bc	PL 22x406	9 040	(H270M-345HT2)	(H2-3)	
2	B		2	xlc	PL 22x195	1 836	MJE		
2	B		2	xld	PL 22x195	1 836	MJE		
2	C		5	xlg	PL 14x195	1 830			
2	C		5	xlk	PL 14x195	1 830			



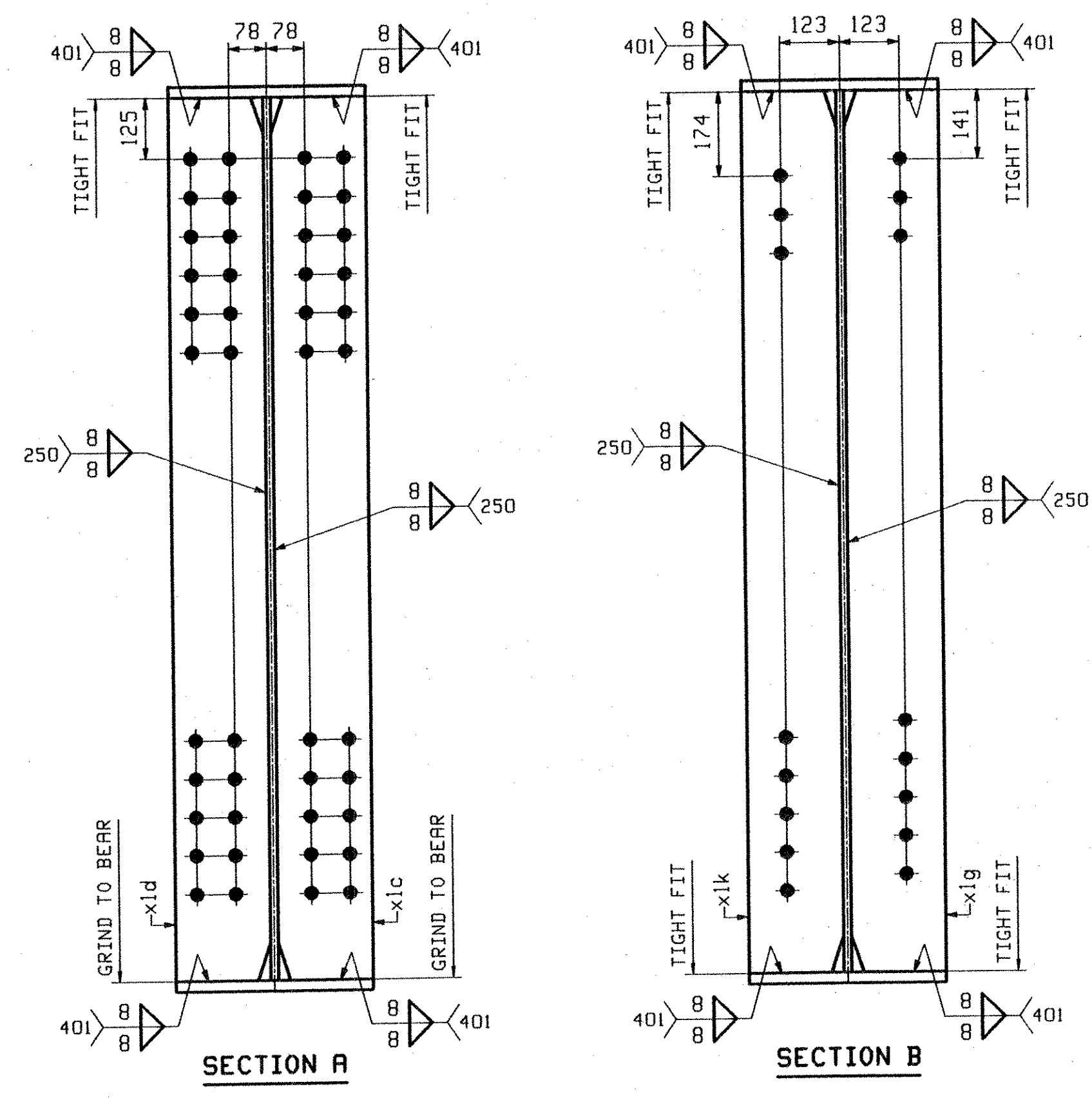
SEE CAMBER DIAGRAM



ORIENTATION DIAGRAM  
SEE DRAWING C1

**ONE - GIRDER - 3G3**

FOR GIRDER STANDARD DETAILS SEE DRAWING X1.  
FOR CAMBER DIAGRAM SEE DRAWING C1.  
FOR GENERAL NOTES SEE DRAWING GNI.  
H2-3 DENOTES MATERIAL SUBJECT TO CHARPY V-NOTCH TESTING.



OUT FOR APPROVAL	7-5-05										
OUT FOR APPROVAL											
ISSUED TO SHOP											
FIELD & OFFICE											
REV.	REMARKS	DATE	DWN	CHK	APP	Q.A.	NO.	DIA.	LGT	TYPE	WASHER
MATERIAL:	ELECTRODES:	HOLES:					15 16		29mm		SHOP BOLTS: NONE
SURFACE PREP. & PAINT: SEE DRAWING GNI											
DESCRIPTION:	GIRDER - 3G3							DRAWN BY:	DATE		
JOB:	VT ROUTE 12 BRIDGE OVER WHITE RIVER BRIDGE NO: 31 (SPAN #2)							JTB	05/09		
	TOWN OF BETHEL, VERMONT							CHKD BY:			
	COUNTY OF WINDSOR							TJB	06/22		
	CONTRACTOR: KUBRICKY CONST CORP.							APPROV BY:			
PROJ NO.	BRF0241(33) C/2							Q.A.			
CUSTOMER:	VERMONT AOT							SUPERVISOR	W. J. GATTI		
<b>CASCO BAY STEEL STRUCTURES, INC.</b>										JOB NO.	DRG. NO.
75 SPRING HILL ROAD										270	3
PHONE (207) 282-7360										14055	REV. 3
SACO, MAINE 04072											
FAX. (207) 282-1179											

RECEIVED  
OK'D BY: KMP OK'D BY: HZS  
JUL 14 2005  
RESUBMIT APPROVED BY: [Signature]  
BY: CPW DATE: 7/28/05