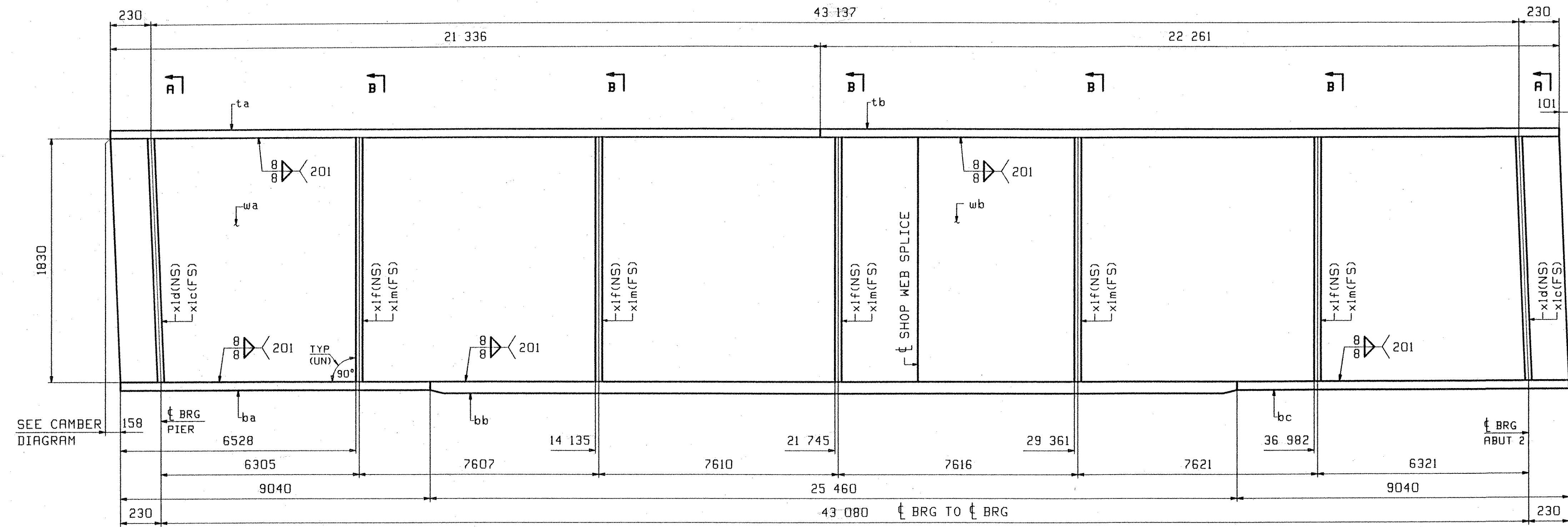
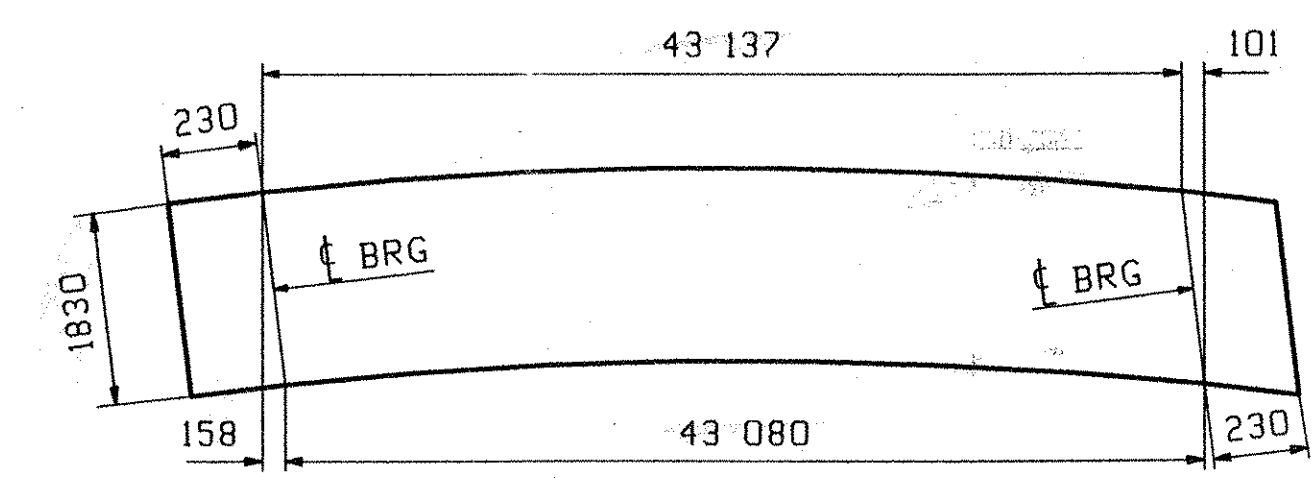


ABM INFO		BILL OF MATERIAL				JOB NO.	DRAWING NO.		
PAGE	LINE	MARK	QTY	MARK	MATERIAL	LENGTH	REMARKS	WT	PROCUREMENT NOTES
						m			
		2G2	1		GIRDER			18259 kg	
								40254 lb	
1	E		1	wa	PL 16x1830	22 409	(H270M-345HT2)	(H2-3)	
1	G		1	wb	PL 16x1830	21 312	(H270M-345HT2)	(H2-3)	
1	L		1	ta	PL 22x406	21 336			
1	J		1	tb	PL 22x406	22 261			
1	C		1	ba	PL 22x406	9 040	(H270M-345HT2)	(H2-3)	
1	A		1	bb	PL 40x406	25 460	(H270M-345HT2)	(H2-3)	
1	C		1	bc	PL 22x406	9 040	(H270M-345HT2)	(H2-3)	
2	B		2	xlc	PL 22x195	1 836		MJE	
2	B		2	xld	PL 22x195	1 836		MJE	
2	C		5	xlf	PL 14x195	1 830			
2	C		5	xlm	PL 14x195	1 830			



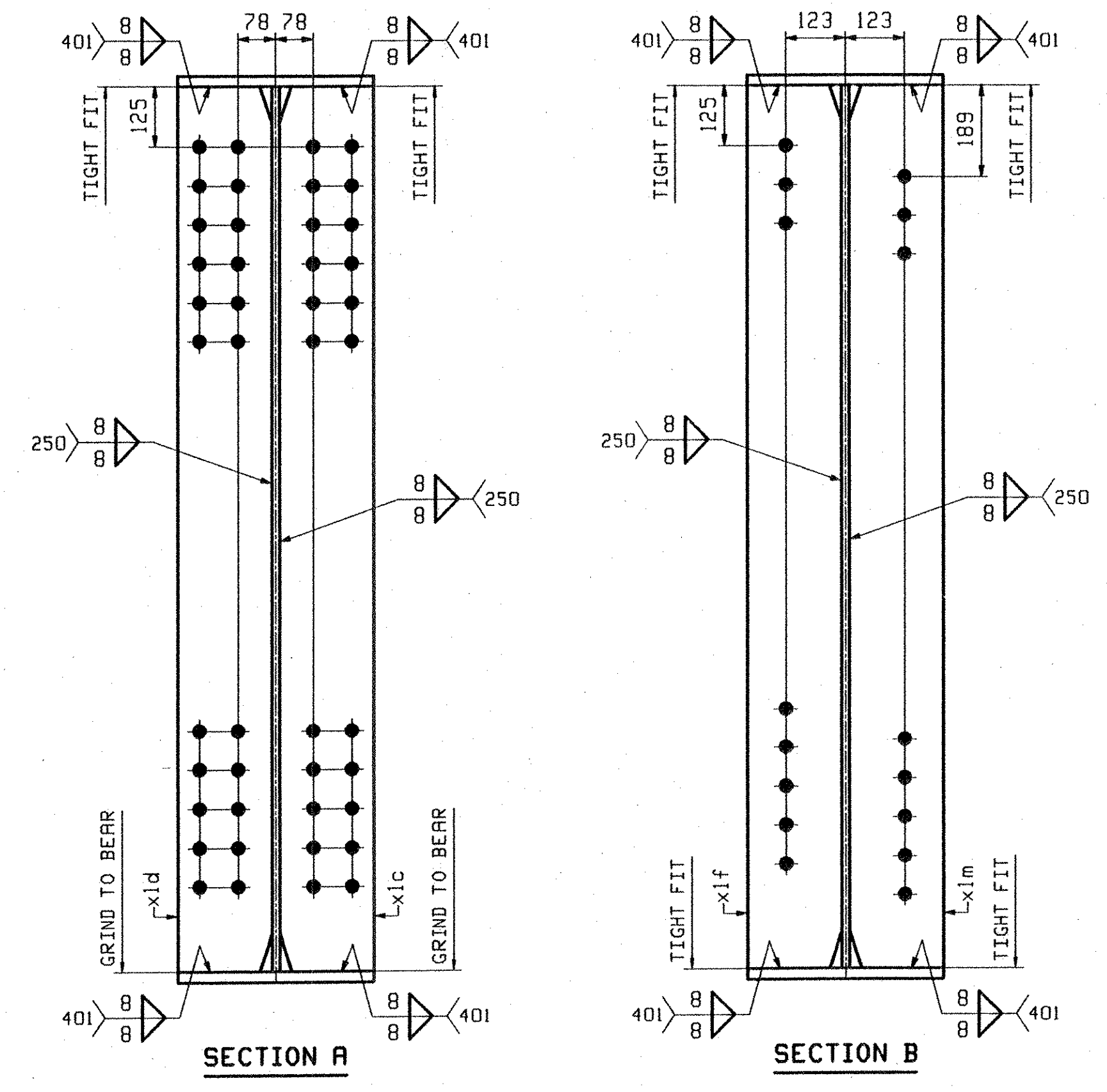
SEE CAMBER DIAGRAM



ORIENTATION DIAGRAM  
SEE DRAWING C1

**ONE - GIRDER - 2G2**

FOR GIRDER STANDARD DETAILS SEE DRAWING X1.  
FOR CAMBER DIAGRAM SEE DRAWING C1.  
FOR GENERAL NOTES SEE DRAWING GNI.  
H2-3 DENOTES MATERIAL SUBJECT TO CHARPY V-NOTCH TESTING.



OUT FOR APPROVAL	7.5.05								
OUT FOR APPROVAL									
ISSUED TO SHOP									
FIELD & OFFICE									

REV.	REMARKS	DATE	DWN	CHK	APP	Q.A.	NO.	DIA.	LGT	TYPE	WASHER
	MATERIAL:										
	M270M GR 345W						15	16	24		NONE

SURFACE PREP. & PAINT:  
SEE DRAWING GNI

DESCRIPTION:	GIRDER - 2G2	DRAWN BY	JTB	DATE	05/30
JOB:	VT ROUTE 12 BRIDGE OVER WHITE RIVER	CHKD BY	JTB		06/12
	BRIDGE NO: 31 (SPAN #2)	APPROV BY			
	TOWN OF BETHEL, VERMONT	SUPERVISOR	W. J. GH TI		
	COUNTY OF WINDSOR				
	CONTRACTOR: KUBRICKY CONST CORP.				
PROJ NO.	BRF0241(33) C/2	Q.A.			
CUSTOMER:	VERMONT AOT				

RECEIVED  
OK'D BY: RMH OK'D BY: HIC  
JUL 14 2005  
RESUBMIT: \_\_\_\_\_ APPROVED: \_\_\_\_\_  
BY: Cpw DATE: 7/23/05

<b>CASCO BAY STEEL STRUCTURES, INC.</b>		JOB NO.	DRG. NO.
75 SPRING HILL ROAD	SACO, MAINE 04072	270	2
PHONE (207) 282-7360	FAX (207) 282-1179	13955	REV. 1