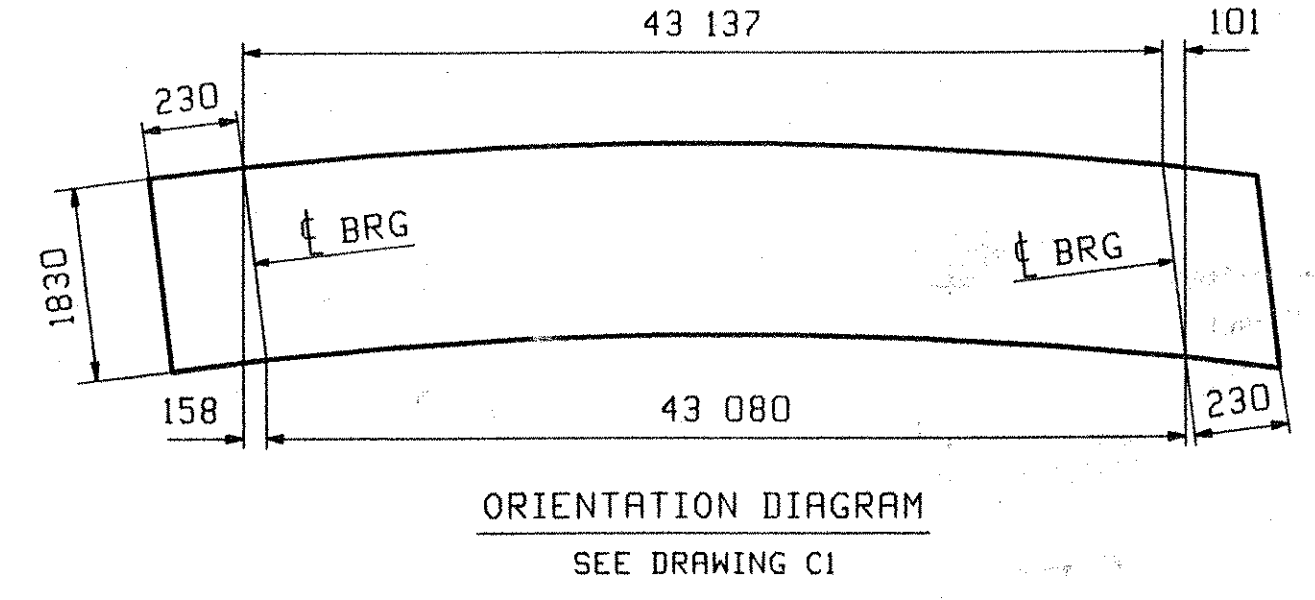
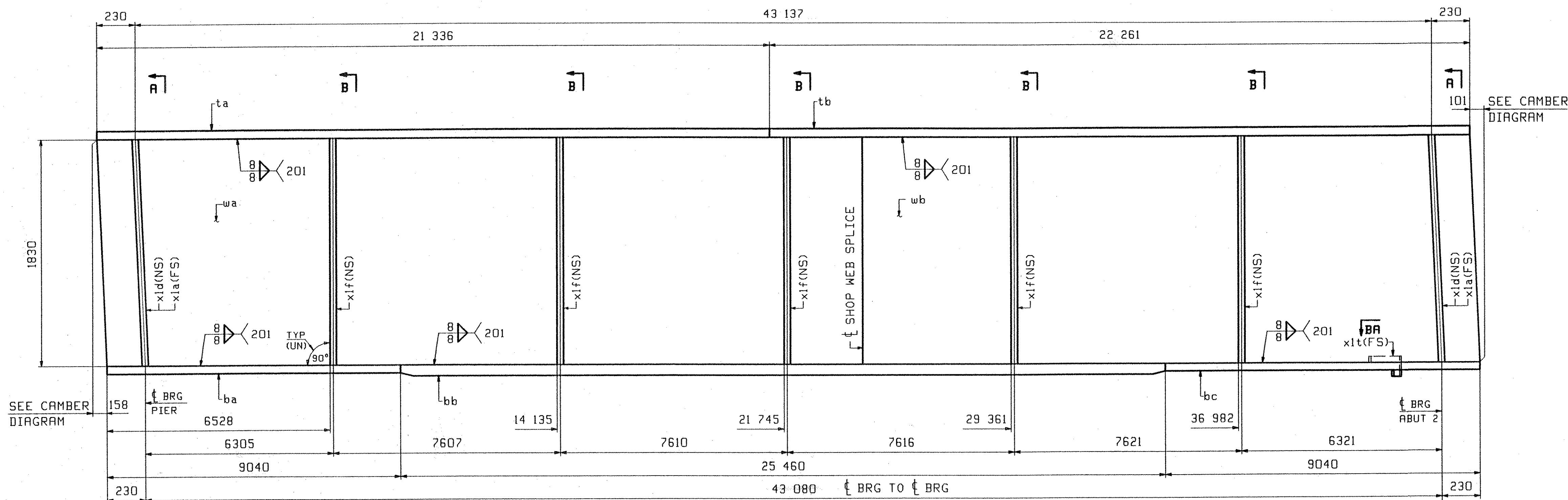
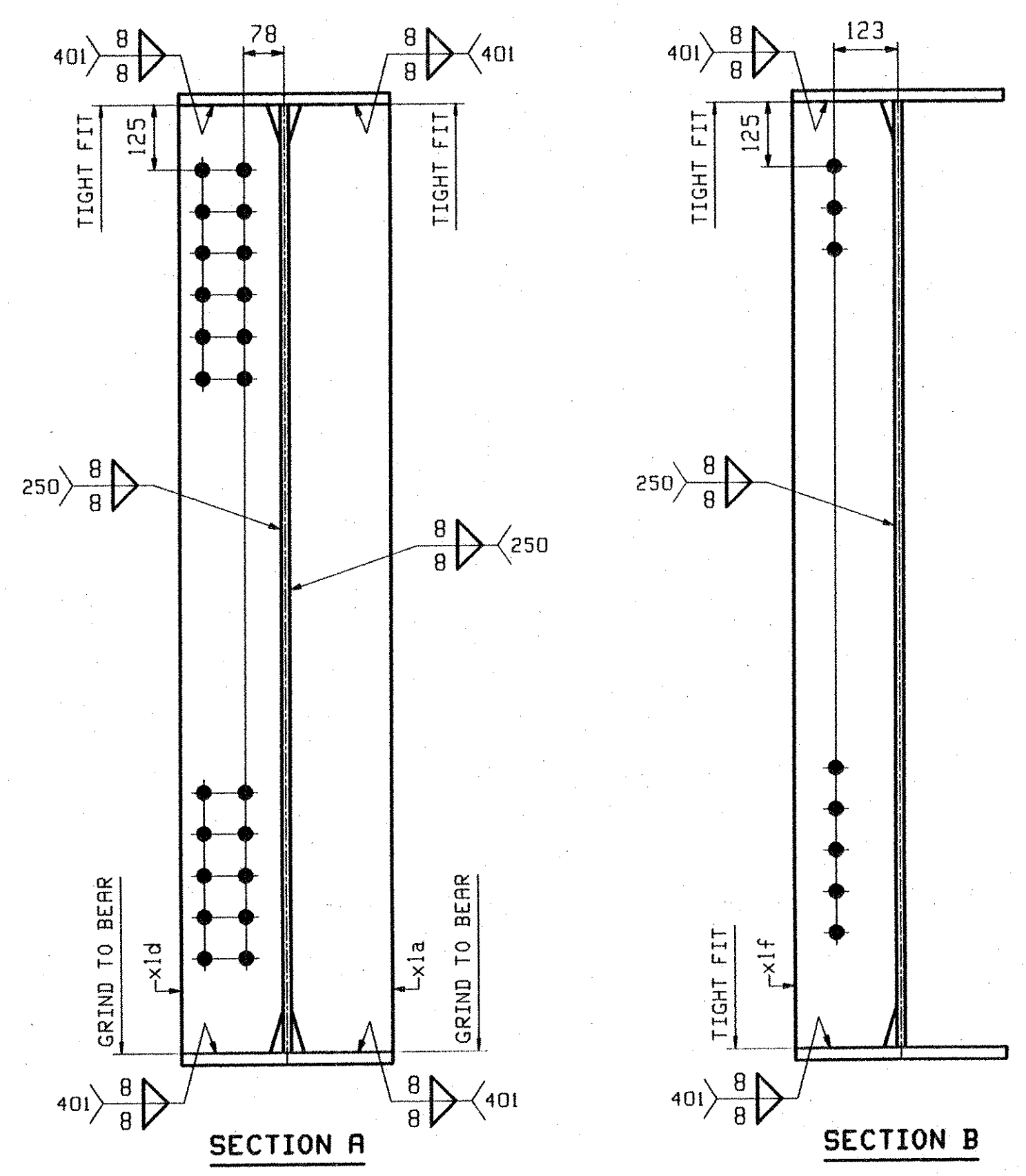
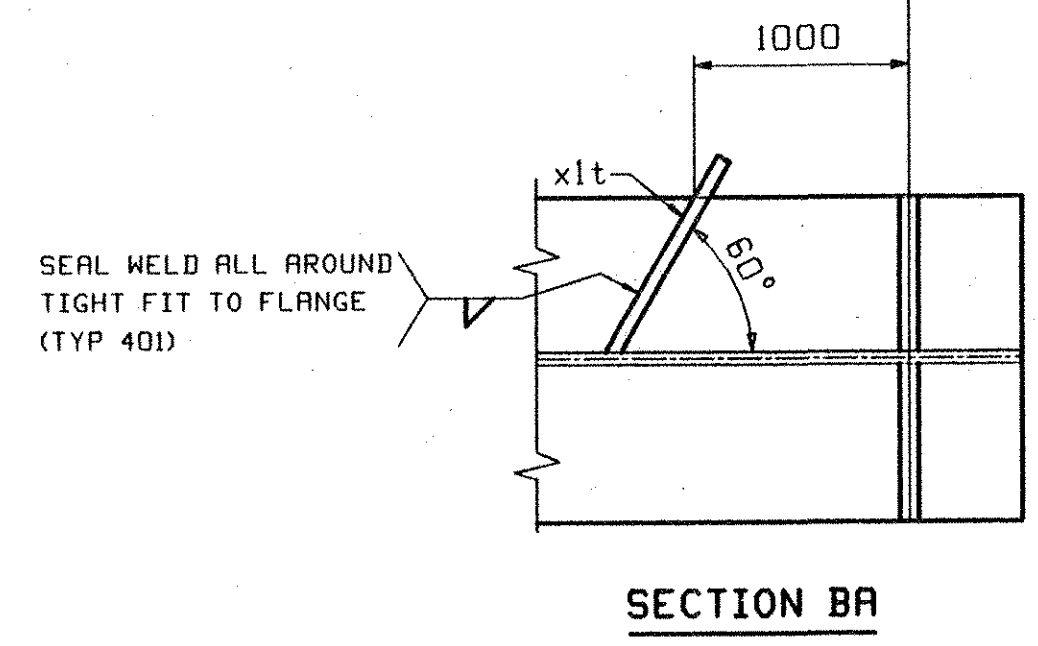


ABM INFO		SHIP	BILL OF MATERIAL				JOB NO.	DRAWING NO.	REV.
PAGE	LINE	MARK	QTY	MARK	MATERIAL	LENGTH m mm	REMARKS	WT	PROCUREMENT NOTES
		IG1	1		GIRDER			1054 kg 2824 lb	
1	E		1	wa	PL 16x1830	22 409	(M270M-345HT2)	(H2-3)	
1	G		1	wb	PL 16x1830	21 312	(M270M-345HT2)	(H2-3)	
1	L		1	ta	PL 22x406	21 336			
1	J		1	tb	PL 22x406	22 261			
1	C		1	ba	PL 22x406	9 040	(M270M-345HT2)	(H2-3)	
1	A		1	bb	PL 40x406	25 460	(M270M-345HT2)	(H2-3)	
1	C		1	bc	PL 22x406	9 040	(M270M-345HT2)	(H2-3)	
2	B		2	x1a	PL 22x195	1 836	MIF		
2	B		2	x1d	PL 22x195	1 836	MIF		
2	C		5	x1f	PL 14x195	1 830			
2	D		1	x1t	PL 6x72	0 229			



ONE - GIRDER - IG1
 FOR GIRDER STANDARD DETAILS SEE DRAWING X1.
 FOR CAMBER DIAGRAM SEE DRAWING C1.
 FOR GENERAL NOTES SEE DRAWING GNI.
 H2-3 DENOTES MATERIAL SUBJECT TO CHARPY V-NOTCH TESTING.



OUT FOR APPROVAL	7/5/05										
OUT FOR APPROVAL											
ISSUED TO SHOP											
FIELD & OFFICE											
REV.	REMARKS	DATE	DWN	CHK	APP	O.A.	NO.	DIA.	LGT	TYPE	WASHER
MATERIAL:		ELECTRODES:		HOLES:		SHOP BOLTS:					
M270M GR 345W				15 16		24mm NONE					
SURFACE PREP. & PAINT:											
SEE DRAWING GNI											
DESCRIPTION: GIRDER - IG1										DRAWN BY	DATE
JOB: VT ROUTE 12 BRIDGE OVER WHITE RIVER										JTB	05/30
BRIDGE NO: 31 (SPAN #2)										CHKD BY	
TOWN OF BETHEL, VERMONT										TJB	06/22
COUNTY OF WINDSOR										APPROV BY	
CONTRACTOR: KUBRICKY CONST CORP.										SUPERVISOR	W. J. GATTI
PROJ NO.		BRF0241(33) C/2		O.A.							
CUSTOMER: VERMONT ROT											
CASCO BAY STEEL STRUCTURES, INC.										JOB NO.	DRG. NO.
75 SPRING HILL ROAD SACO, MAINE 04072										270	1
PHONE (207) 282-7360 FAX. (207) 282-1179										1/38 55	REV. Δ

RECEIVED
 OK'D BY: *KWH* OK'D BY: *HEE*
 JUL 14 2005
 RESUBMIT: _____ APPROVED: *Hee*
 BY: *CPW* DATE: *7/28/05*