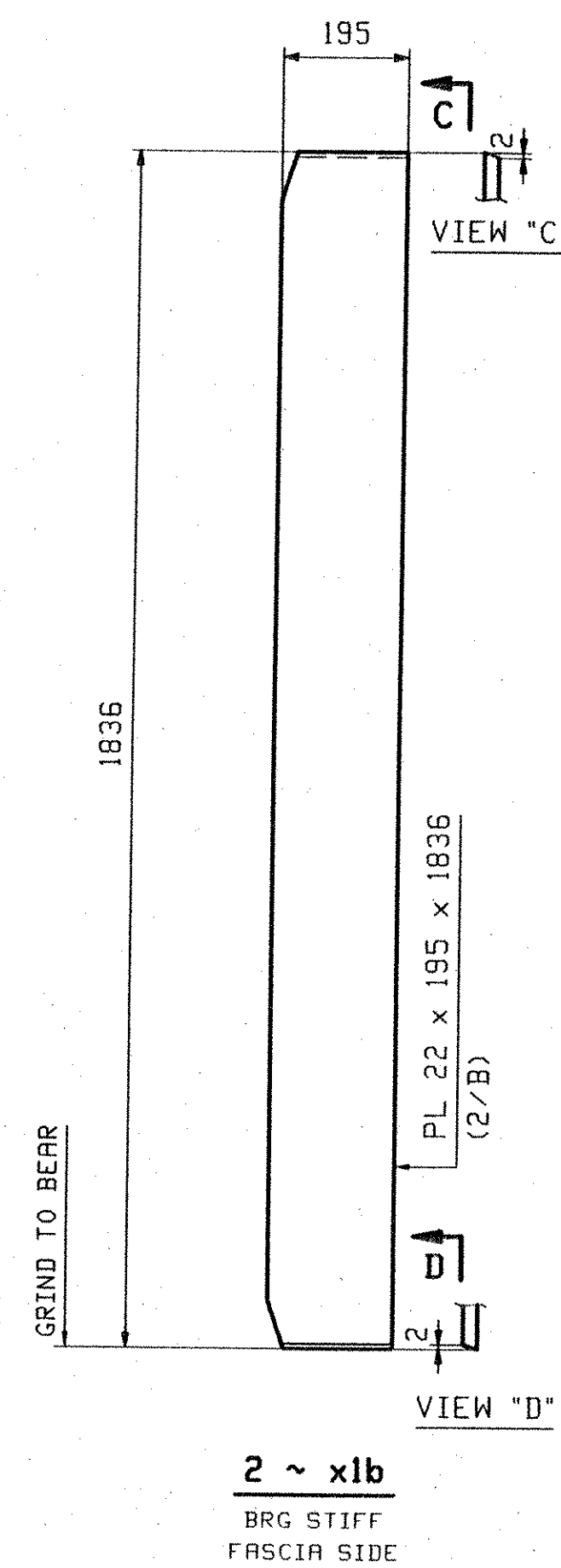
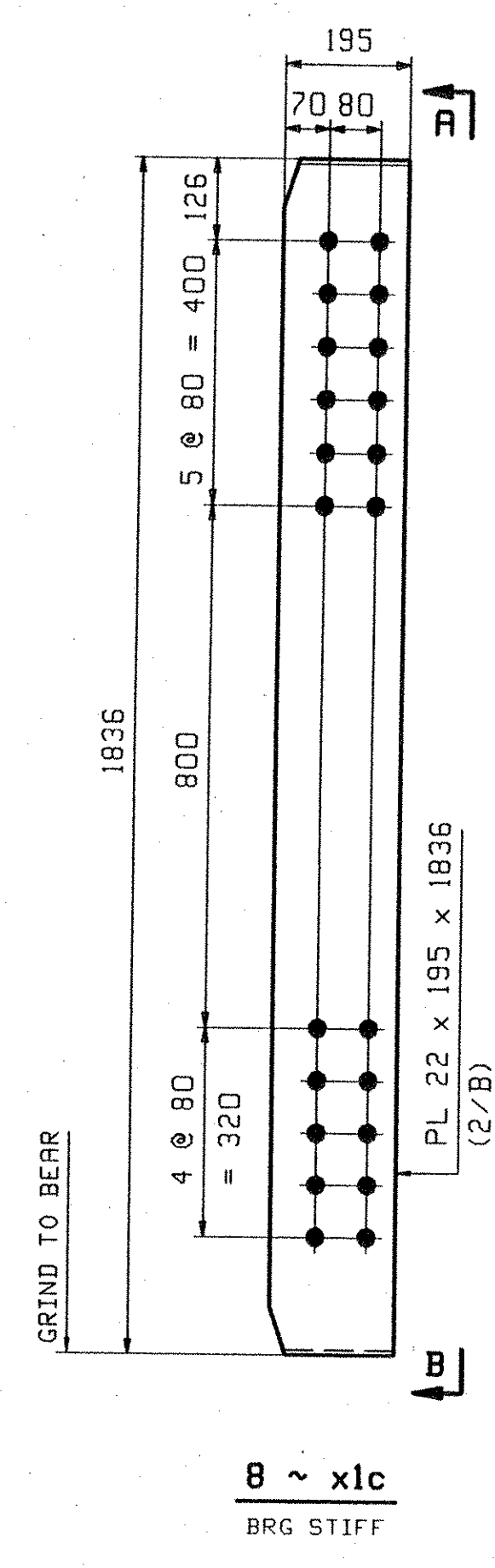


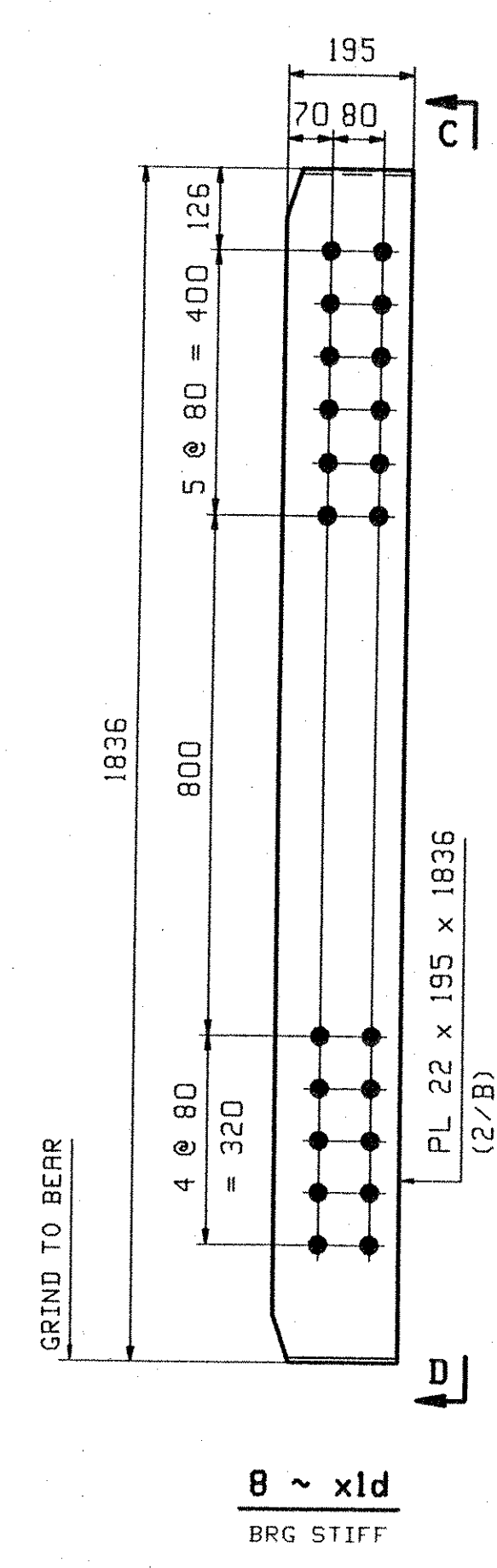
2 ~ x1a
BRG STIFF
FASCIA SIDE



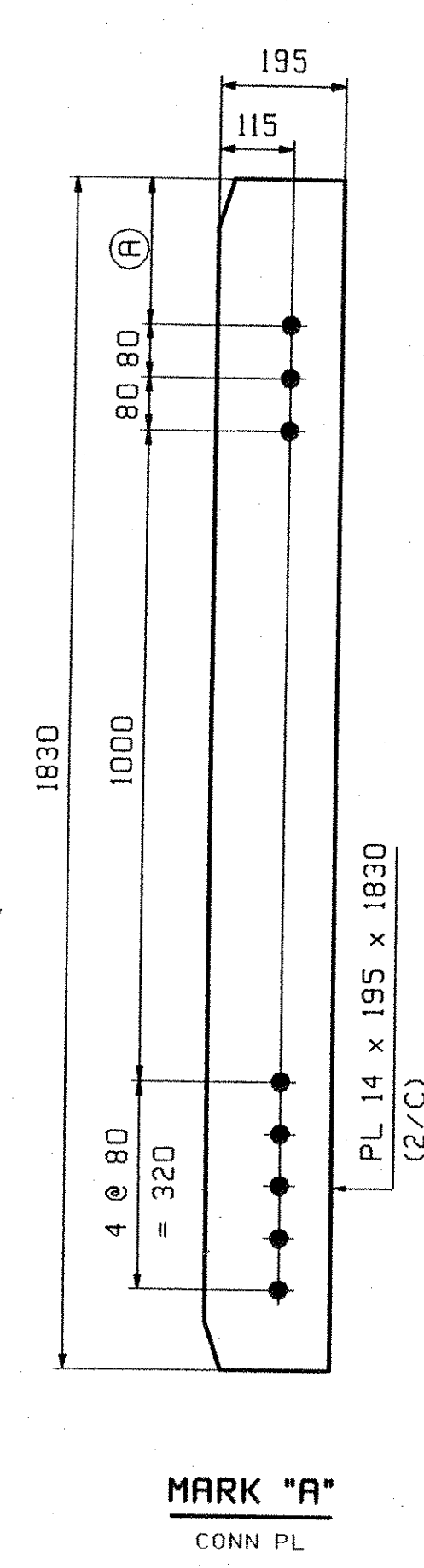
2 ~ x1b
BRG STIFF
FASCIA SIDE



8 ~ x1c
BRG STIFF

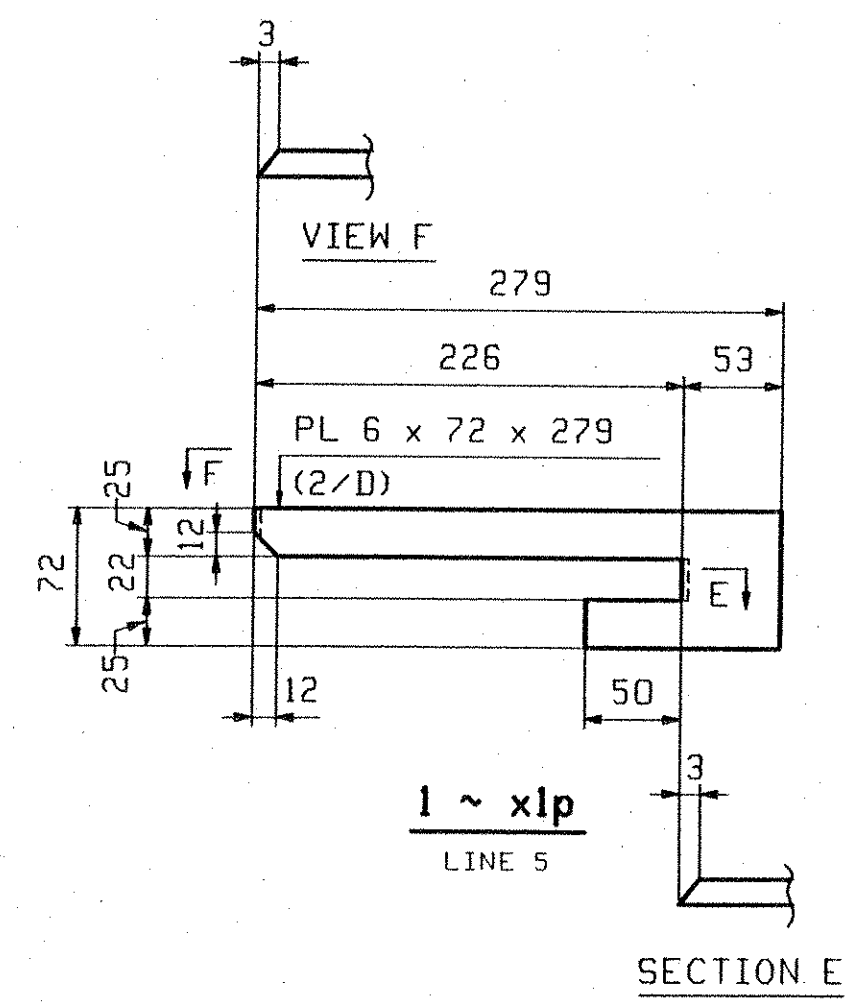


8 ~ x1d
BRG STIFF



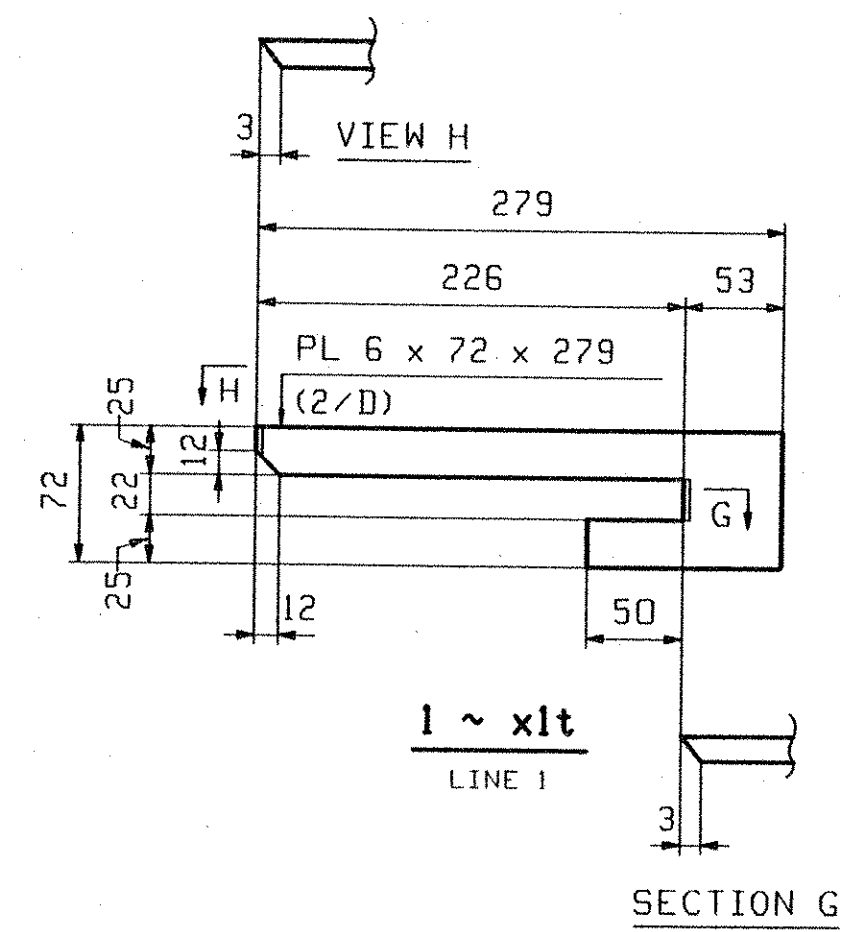
MARK "A"
CONN PL

MARK "A"	QTY	(A)	
x1f	20	125	LOW END
x1g	5	141	DROP - 16
x1k	5	174	DROP - 49
x1m	5	189	DROP - 64
x1n	5	223	DROP - 98



1 ~ x1p
LINE 5

SECTION E



1 ~ x1t
LINE 1

SECTION G

NOTES:
ALL MATERIAL SHALL BE M270M-345W.
ALL BOLT HOLES SHALL BE 15/16" Ø FOR 7/8" HSB.
FOR GENERAL NOTES SEE SHEET GNI. 24mm

OUT FOR APPROVAL	2505										
ISSUED TO SHOP											
FIELD & OFFICE											
REV.	REMARKS	DATE	DWN	CHK	APP	O.A.	NO.	DIA.	LGT	TYPE	WASHER
MATERIAL:	M270M-345W	ELECTRODES:		HOLES:	15/16" Ø	24	SHOP BOLTS:		NONE		
SURFACE PREP. & PAINT: SEE DRAWING GNI											
DESCRIPTION:	GIRDER STANDARDS										
JOB:	VT ROUTE 12 BRIDGE OVER WHITE RIVER										
	BRIDGE NO: 31 (SPAN #2)										
	TOWN OF BETHEL, VERMONT										
	COUNTY OF WINDSOR										
	CONTRACTOR: KUBRICKY CONST CORP.										
PROJ NO.	BRF0241(33) C/2										
CUSTOMER:	VERMONT AOT										
DRAWN BY:	JTB	DATE:	05/23								
CHKD BY:	TJB	DATE:	06/22								
APPROV BY:	W. J. GATTI										
REVISION:	X1										
JOB NO.	270	DRG. NO.	13755								
PHONE	(207) 282-7360	SACO, MAINE 04072	FAX. (207) 282-1179								
REV.	△										

RECEIVED
JUL 14 2005
APPROVED BY: [Signature]
DATE: 7/23/05