

GENERAL NOTES

CONSTRUCTION SPECIFICATIONS

- 1). ALL MATERIAL AND WORKMANSHIP TO BE IN ACCORDANCE WITH THE STATE OF VERMONT AGENCY OF TRANSPORTATION STANDARD SPECIFICATIONS FOR CONSTRUCTION DATED 2001 WITH LATEST REVISIONS.

DESIGN SPECIFICATIONS

- 1). AMERICAN ASSOCIATION OF STATE HIGHWAY AND TRANSPORTATION OFFICIALS (A.A.S.H.T.O) STANDARD SPECIFICATIONS FOR HIGHWAY BRIDGES, 1996 EDITION WITH LATEST REVISIONS.

MATERIAL SPECIFICATIONS

- 1). UNLESS NOTED, ALL STEEL TO BE AASHTO M270M GRADE 345W.
- 2). HIGH STRENGTH BOLTS: AASHTO M164 (ASTM A325 TYPE 3) (7/8") DIA IN UNPAINTED AREAS. AASHTO M164 (ASTM A325 TYPE 1) (7/8") DIA IN PAINTED AREAS. ALL TYPE I BOLTS SHALL BE GALVANIZED PER AASHTO M232.
- 3). GIRDER WEB & BOTTOM FLANGES SHALL BE CHARPY V NOTCH TESTED IN ACCORDANCE WITH THE REQUIREMENTS OF VERMONT STANDARD SPECIFICATIONS. DRAWINGS SHALL CALL OUT "H2-3" FOR EACH APPLICABLE ITEM IN THE BILLS OF MATERIAL.

FABRICATION

- 1). ALL HOLES SHALL BE PUNCHED OR DRILLED FULL SIZE (UN).
- 2). STUDS ARE FURNISHED AND FIELD APPLIED BY OTHERS.

WELDING

- 1). THE CONFIGURATION OF THE WELD JOINTS AND ALL WELDING PROCEDURES SHALL BE IN ACCORDANCE WITH AASHTO/AWS D1.5-02 BRIDGE WELDING CODE AND IN ADDITION TO SPECIFICATIONS SHOWN ABOVE. ALL WELDING WILL BE DETAILED TO PRE-QUALIFIED JOINTS, UNLESS PROHIBITED BY THE DESIGNER.
- 2). WELDING OF MAIN LOAD CARRYING MEMBERS AND ATTACHMENTS SHALL BE PERFORMED USING THE AUTOMATIC SUBMERGED ARC & SHIELDED METAL ARC PROCESSES. ALL WELDS ARE CONTINUOUS U.N.
- 3). NON DESTRUCTIVE TESTING OF WELDS SHALL BE IN ACCORDANCE WITH THE REFERENCED SPECIFICATION.

CLEANING:

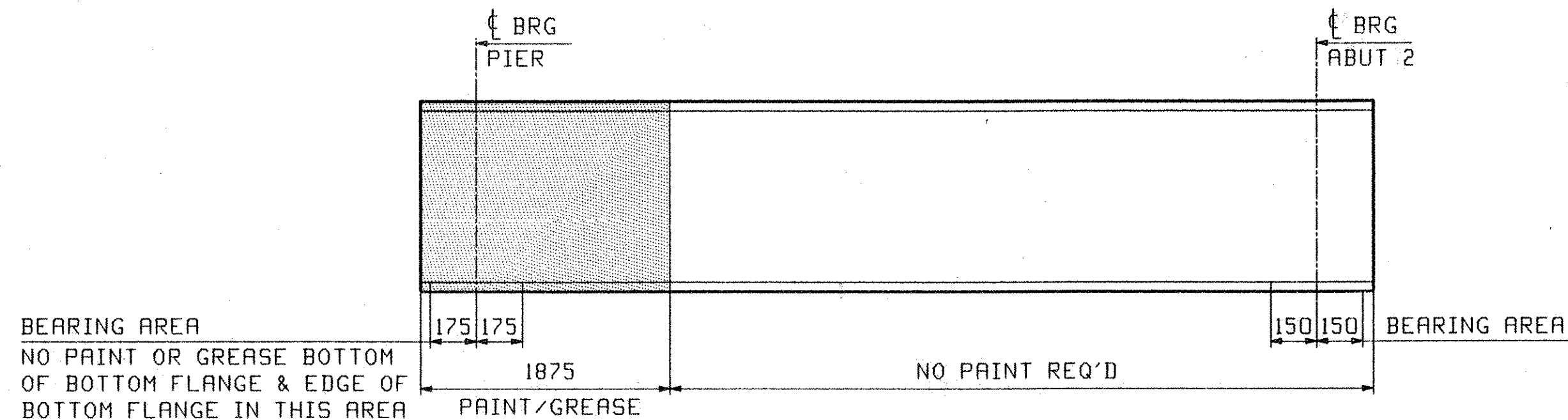
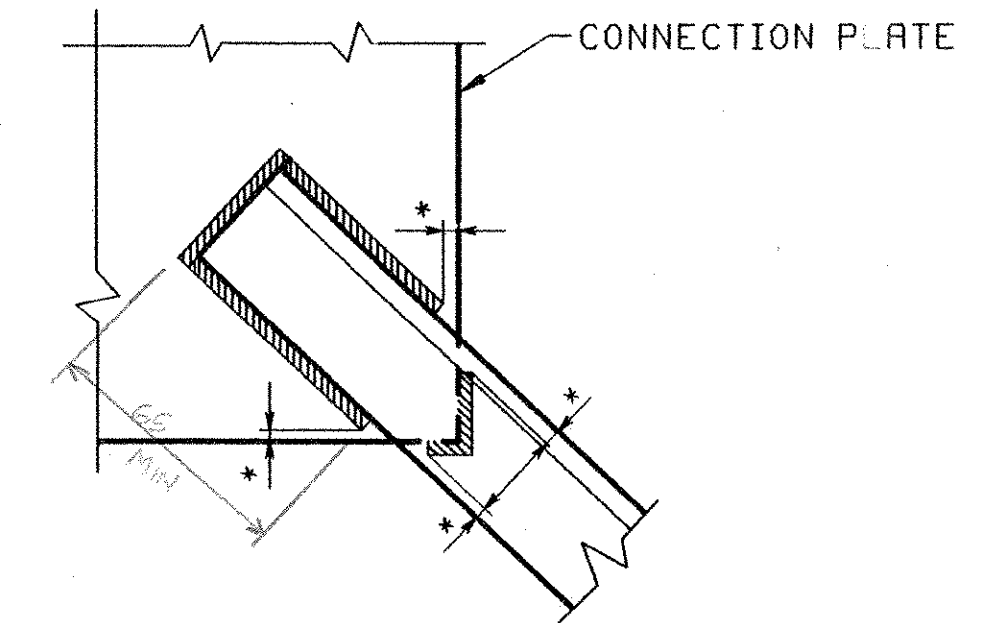
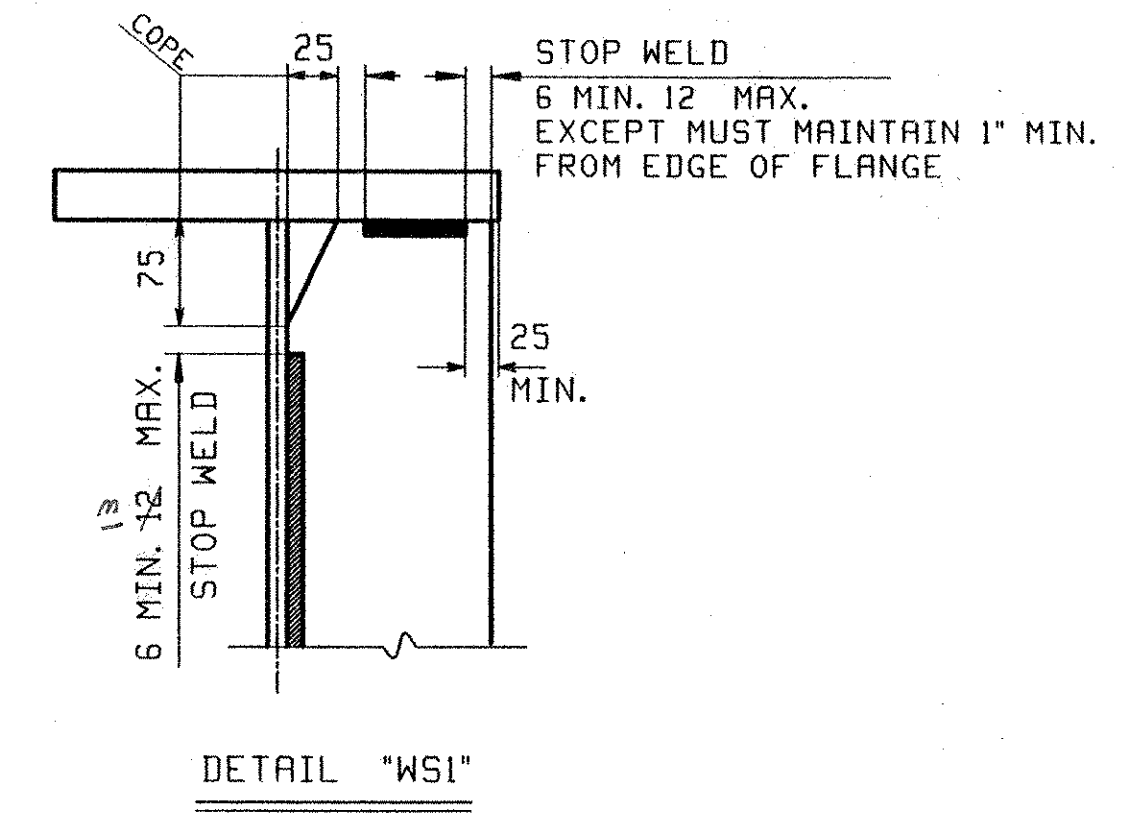
- 1). ALL STEEL SHALL BE BLAST CLEANED AS PER SSPC SP-10 PER SPEC. 506.14(a)

PAINTING

- 1). THE EXPANSION END OF THE GIRDERS & PIER CROSSFRAMES SHALL BE PAINTED AND GREASED PER SUPPLEMENTAL SPECIFICATION 513. SEE SKETCH "PI"

FIELD CONNECTIONS

- 1). ALL FIELD CONNECTIONS SHALL BE MADE WITH (7/8") DIAMETER HIGH STRENGTH A-325 BOLTS, INSTALLED PER SECTION 506.19(c).
- 2). BOLTS SHALL HAVE HEAVY HEX NUT, HEX HEAD, & ONE FLAT WASHER EACH (WASHER TO BE PLACED UNDER TURNED ELEMENT).
- 3). PIECE MARKS WILL BE LOCATED AS SHOWN ON ERECTION DRAWINGS.



SKETCH "PI"

NOTE TO ENGINEER:
THESE NOTES ARE NOT INTENDED TO BE ALL INCLUSIVE AND COMPLIANCE WITH RELEVANT SPECIFICATIONS REMAIN UNCHANGED.

OUT FOR APPROVAL	7505																		
OUT FOR APPROVAL																			
ISSUED TO SHOP																			
FIELD & OFFICE																			

REV.	REMARKS	DATE	DWN	CHK	APP	Q.A.	NO.	DIA.	LGT	TYPE	WASHER

SURFACE PREP. & PAINT:

DESCRIPTION:	GENERAL NOTES	DRAWN BY	DATE
JOB: VT ROUTE 12 BRIDGE OVER WHITE RIVER		JTB	05/20
BRIDGE NO: 31 (SPAN #2)		CHKD BY	
TOWN OF BETHEL, VERMONT		TJB	06/22
COUNTY OF WINDSOR		APPROV BY	
CONTRACTOR: KUBRICKY CONST CORP.		SUPERVISOR	W. J. G'ITTI
PROJ NO. BRD21(33) C/2		Q.A.	
CUSTOMER: VERMONT AOT			
CASCO BAY STEEL STRUCTURES, INC.		JOB NO.	DRG. NO.
75 SPRING HILL ROAD		270	GN1
PHONE (207) 232-7360		13255	REV. Δ
SACO, MAINE 04072			
FAX. (207) 282-1179			

RECEIVED
OK'D BY: *SMH* OK'D BY: *ME*
JUL 14 2005
RESUBMIT APPROVED: *As Noted*
BY: *CPW* DATE: *7/28/05*

OFFICE COPY