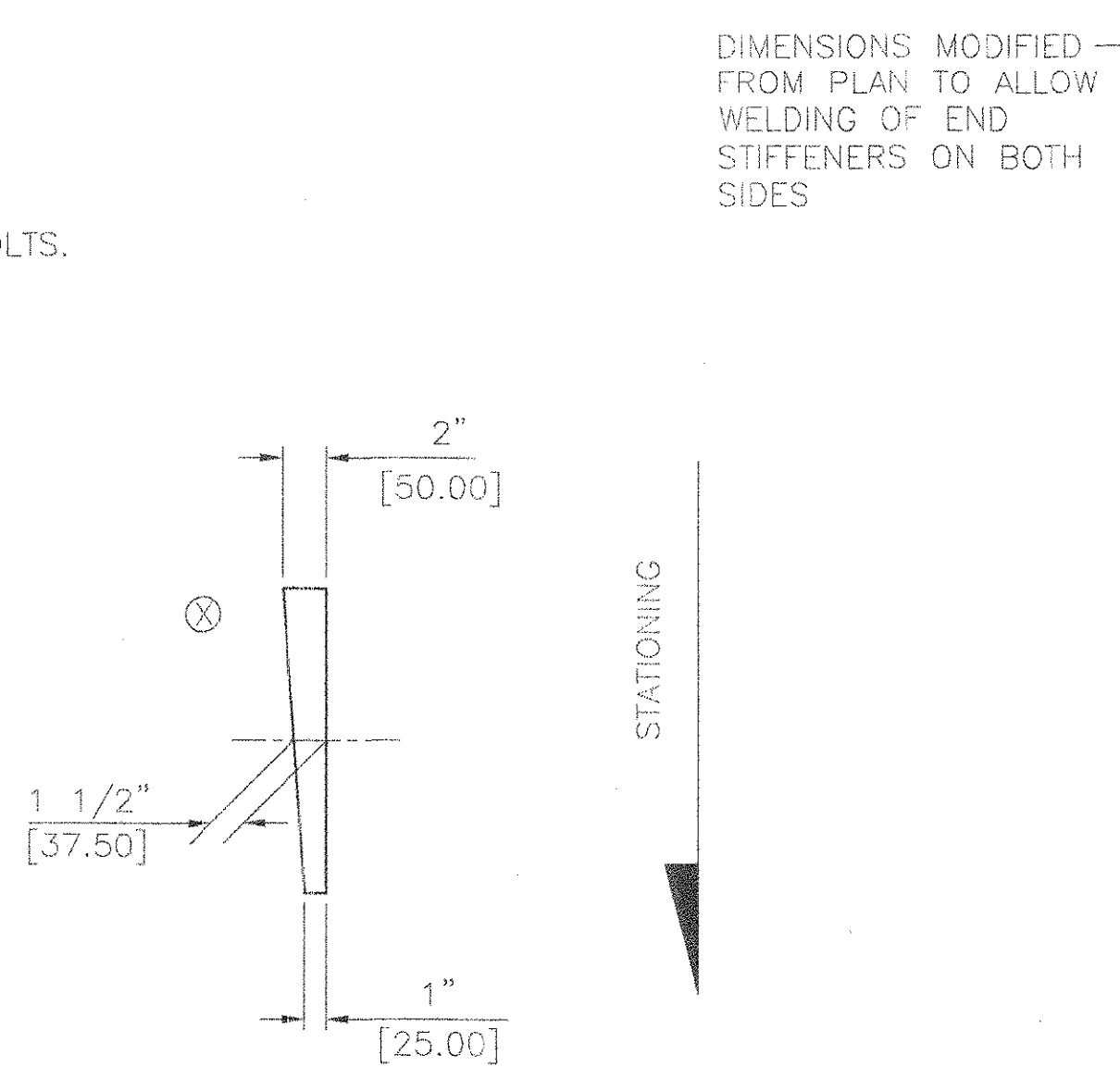
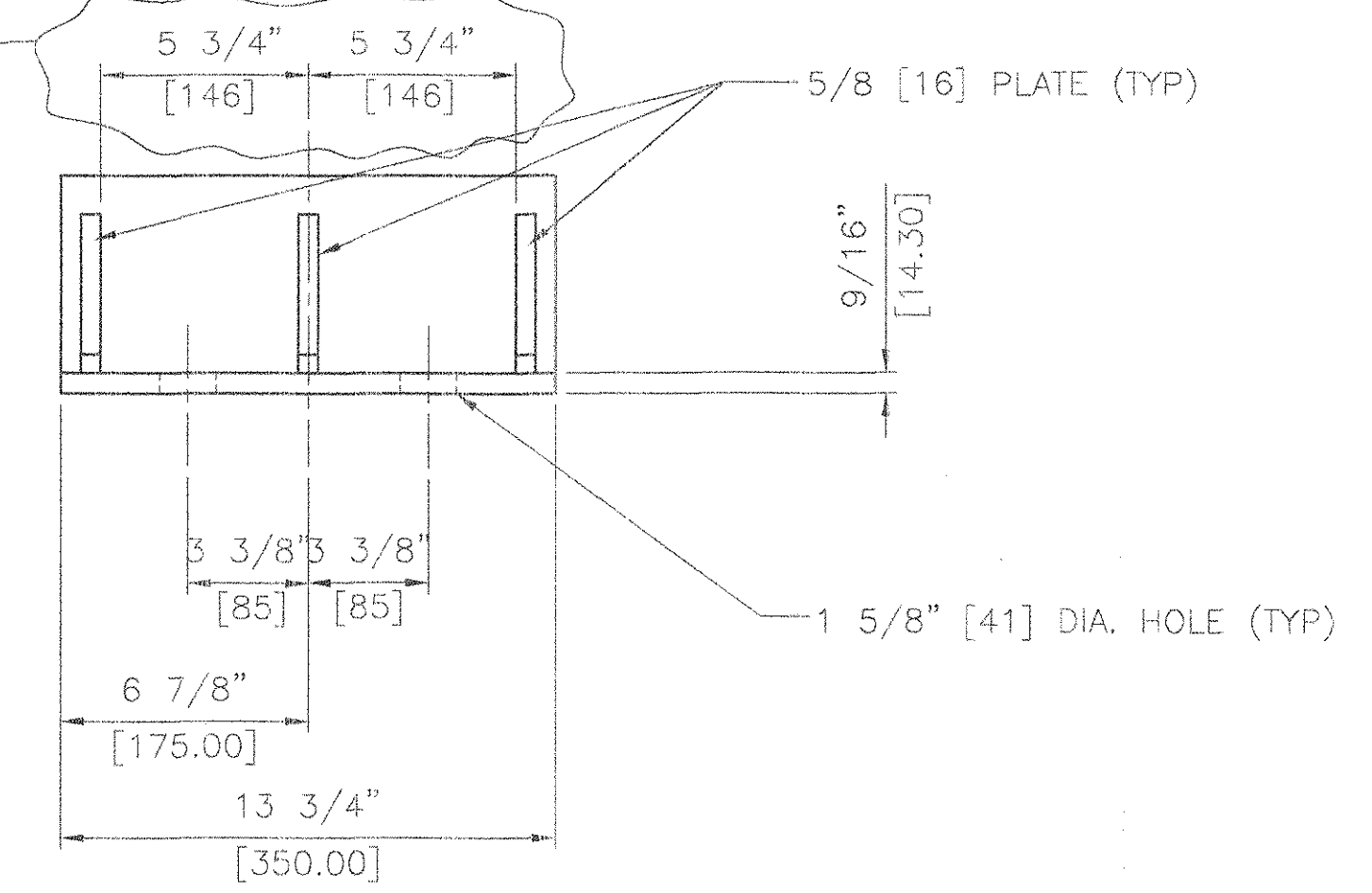


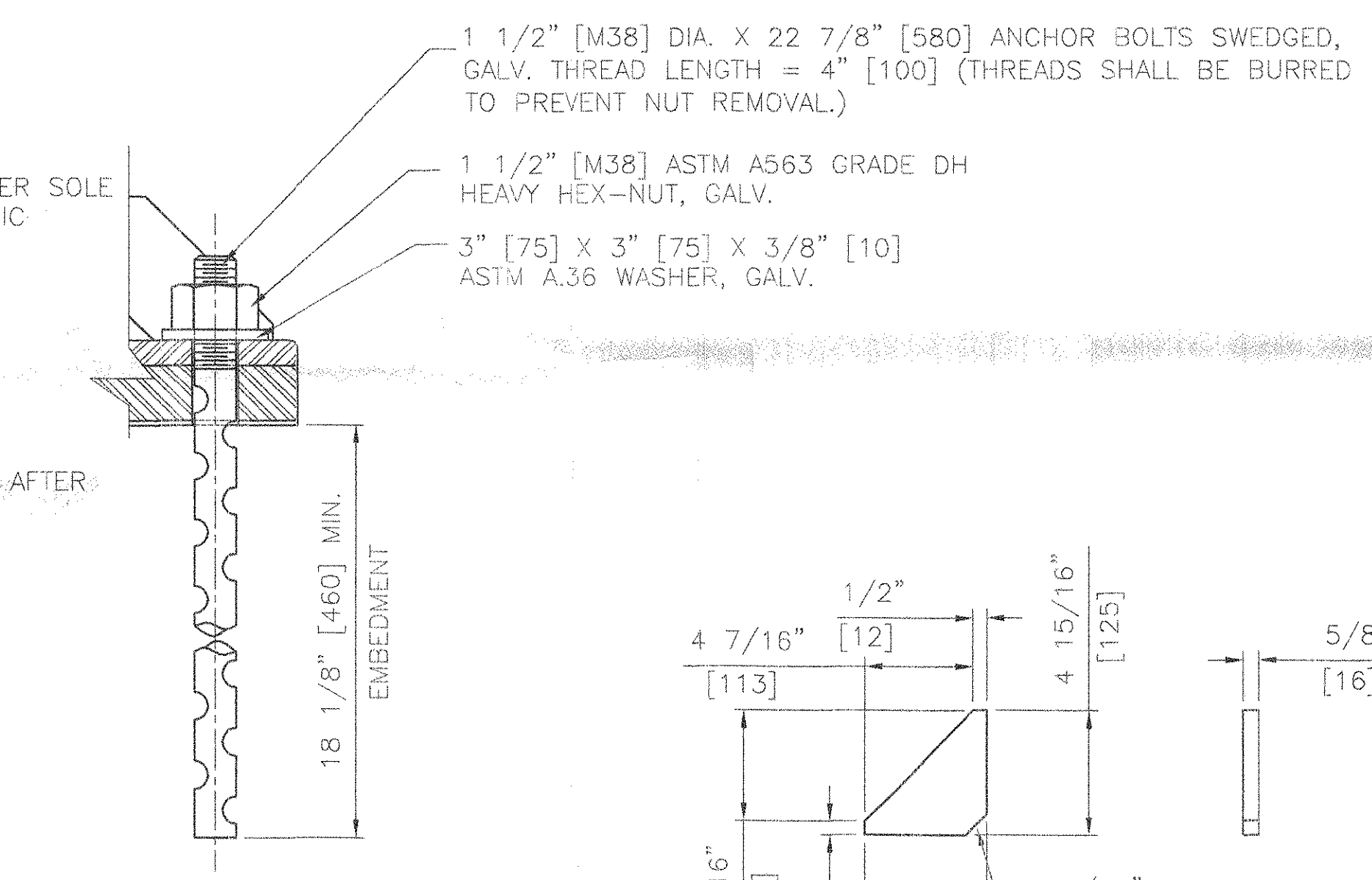
**COSMEC ELASTOMERIC EXPANSION BEARING**  
 LOCATION: PIER  
 QUANTITY: 5



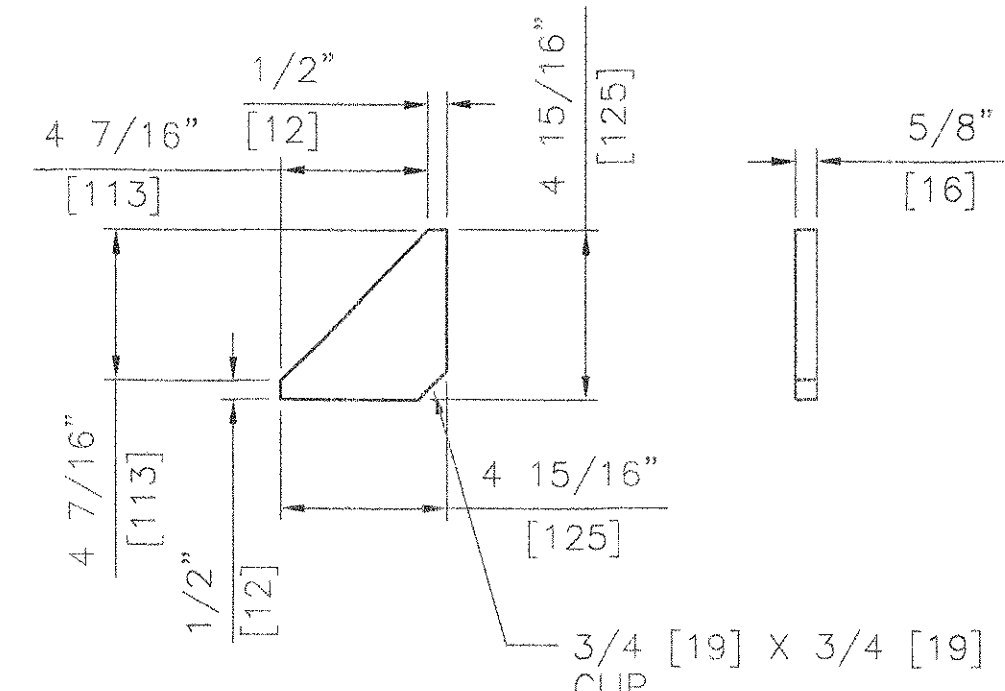
SIDE ELEVATION SOLE PLATE ONLY



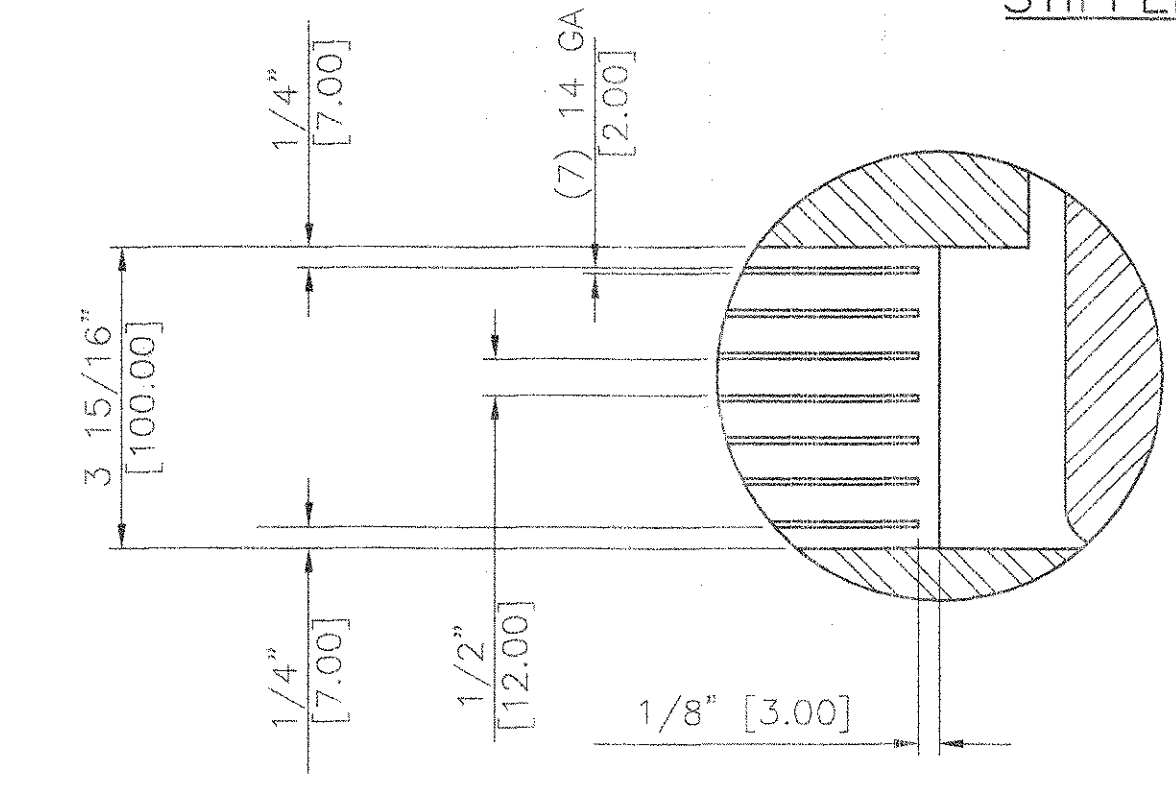
SIDE RETAINER DETAIL △ N.T.S.



ANCHOR BOLT DETAIL N.T.S.



STIFFENER PLATE DETAIL △ N.T.S.



DETAIL A N.T.S.

△ SHOP NOTES:

1. ALL MATERIAL NOTED AS AASHTO M270 GR.50 MAY BE EITHER AASHTO M270M/M270 GR.345, ASTM A709 GR.345 OR A572 GR.345
2. MATERIAL NOTED AS GALVANIZED SHALL BE GALVANIZED IN ACCORDANCE WITH AASHTO M232 (ASTM A123) OR M232M M232 AASHTO M111M/M111 (ASTM A153) AS APPLICABLE.
3. ALL BEARING DEVICES SHALL BE METALLIZED IN ACCORDANCE WITH SUBSECTIONS 531.04(b) AND 506.15(b) AND SEALED WITH AN APPROVED SEALANT IN ACCORDANCE WITH SUBSECTION 506.15(b) OF THE STANDARD SPECIFICATION.
4. PREFORMED FABRIC BEARING PADS SHALL BE FABRICATED IN ACCORDANCE WITH AASHTO DIV. II SPEC. 18.4.9.1.
5. ANCHOR BOLTS: ASTM F1554 GR.55, GALVANIZED
6. STEEL REINFORCEMENT PLATES: ASTM A1011 GR 36 OR 40
7. ELASTOMER: NATURAL RUBBER, 60 DUROMETER GRADE 4 TEMPERATURE RANGE: -34°C TO 49°C ELASTOMER TO HAVE A SHEAR MODULUS BETWEEN 0.896 AND 1.207 MPa
8. LAMINATED ELASTOMERIC BEARING PADS SHALL BE IN ACCORDANCE WITH AASHTO STANDARD SPECIFICATION FOR HIGHWAY BRIDGES, 1996 EDITION AND ITS LATEST REVISIONS AND AASHTO M251M
9. ALL SURFACES OF PLATE SHALL BE SMOOTH AND STRAIGHT.
10. ALL CORNERS AND EDGES SHALL BE GROUND TO A 1/16 INCH RADIUS
11. ALL MATERIAL USED IN THE FABRICATION OF THESE BRGS. SHALL BE MADE IN THE U.S.A.
12. SHOP SHALL MARK HIGH SIDE OF PLATES.
13. LOCATION OF FABRICATION PLANT - 70 SOUTH ST. WALPOLE, MA 02081
14. COSMEC, INC. REPRESENTATIVE: MR. MATT McANDREWS (508) 668-6600

△ ASSEMBLY AND INSTALLATION NOTES:

1. ALL COMPONENTS SHALL BE ASSEMBLED AND SHIPPED AS AN ASSEMBLY AS MUCH AS PRACTICAL.
2. THE CONTRACTOR IS SOLELY RESPONSIBLE FOR THE CORRECT ORIENTATION, ALIGNMENT AND MATCHING OF COMPONENTS SHOULD HE ELECT TO DISASSEMBLE THE BEARING ASSEMBLIES FOR ANY REASON.
3. THE CONTRACTOR IS SOLELY RESPONSIBLE FOR THE PROPER PLACEMENT AND SETTING OF THE ANCHOR BOLTS AS REQUIRED BY THE CONTRACT PLANS.
4. AREAS OF METALLIZING DAMAGED BY WELDING AND/OR HANDLING SHALL BE REPAIRED BY METALLIZING IN ACCORDANCE WITH ASTM A760; AT THE CONTRACTOR'S EXPENSE.

RECEIVED  
 OK'D BY *KMH* OK'D BY \_\_\_\_\_  
 DEC 20 2005  
 RESUBMIT \_\_\_\_\_ APPROVED \_\_\_\_\_  
 BY *CPW* DATE *1/7/06*

STATE OF VERMONT  
 AGENCY OF TRANSPORTATION  
 BETHEL, VT.  
 ROUTE 12 BRIDGE  
 PROJ. NO. BRF 0241 (33) C/2

COSMEC, INC. 70 SOUTH STREET WALPOLE, MA. 02081

SCALE: 1/8"=1" DRAWN BY: DSS CHECK BY: MCM  
 DATE: 9-1-05 DATE: 10-17-05

COSMEC ELASTOMERIC BEARINGS

REV. △	REVISED PER VT A.O.T. COMMENTS	BY MRR	DATE 12/16/05	CHECKED MM	DATE 12/16/05	CUSTOMER KUBRICKY CONSTRUCTION CORP.	S.O. NUMBER 60406	DRAWING NUMBER 4513	REV. 1
--------	--------------------------------	--------	---------------	------------	---------------	--------------------------------------	-------------------	---------------------	--------