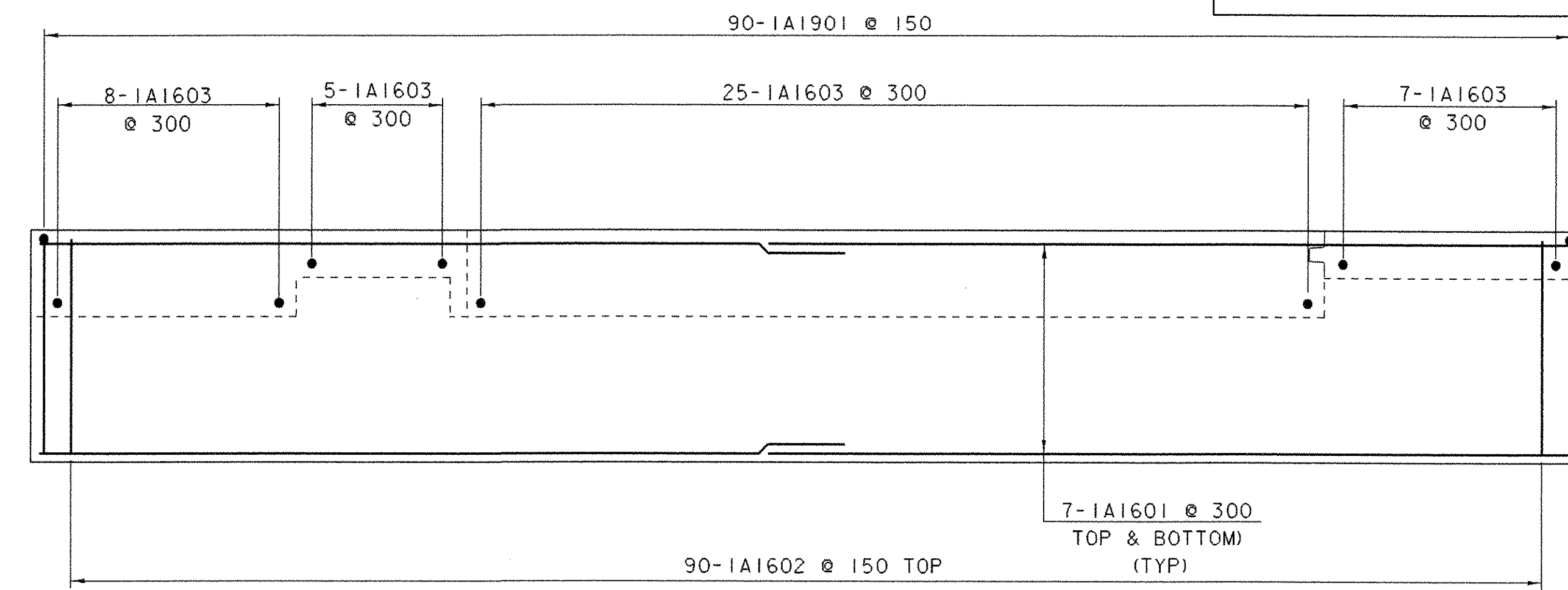


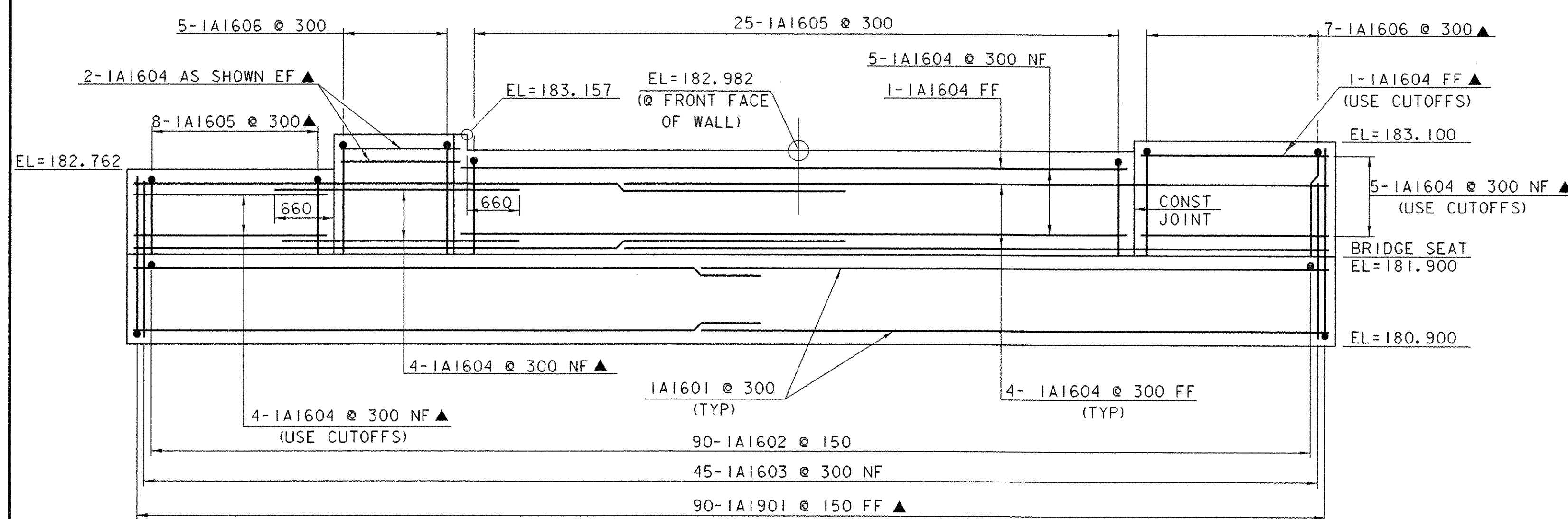
ABUTMENT NO. 1 DIMENSION PLAN

SCALE = 1:40



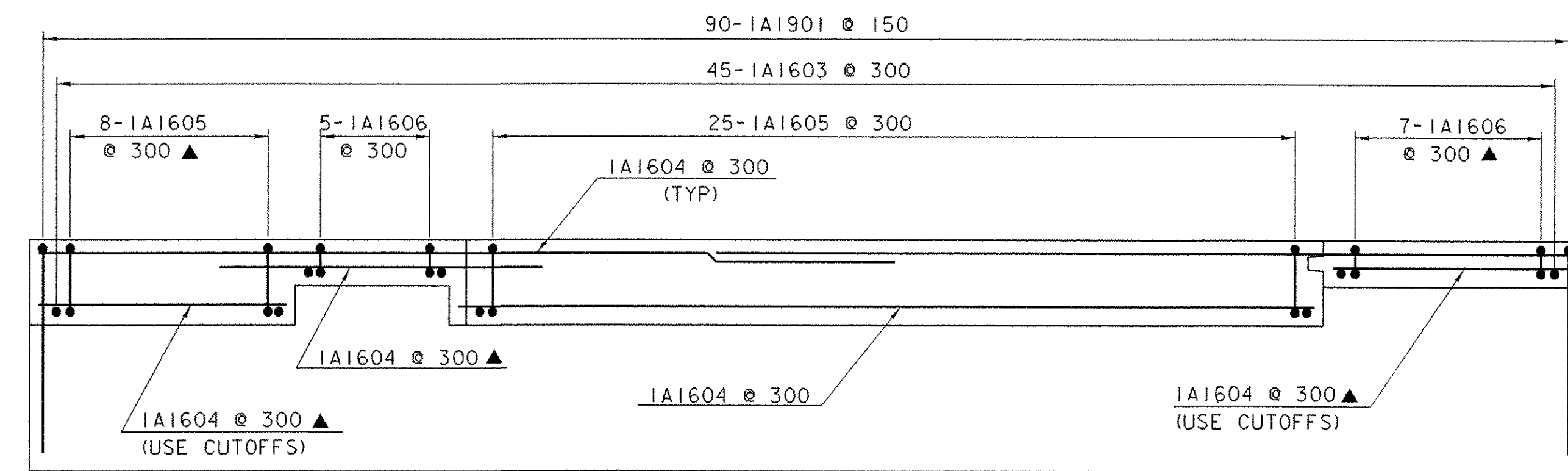
BRIDGE SEAT NO. 1 REINFORCEMENT PLAN

SCALE = 1:40



ABUTMENT NO. 1 ELEVATION

SCALE = 1:40



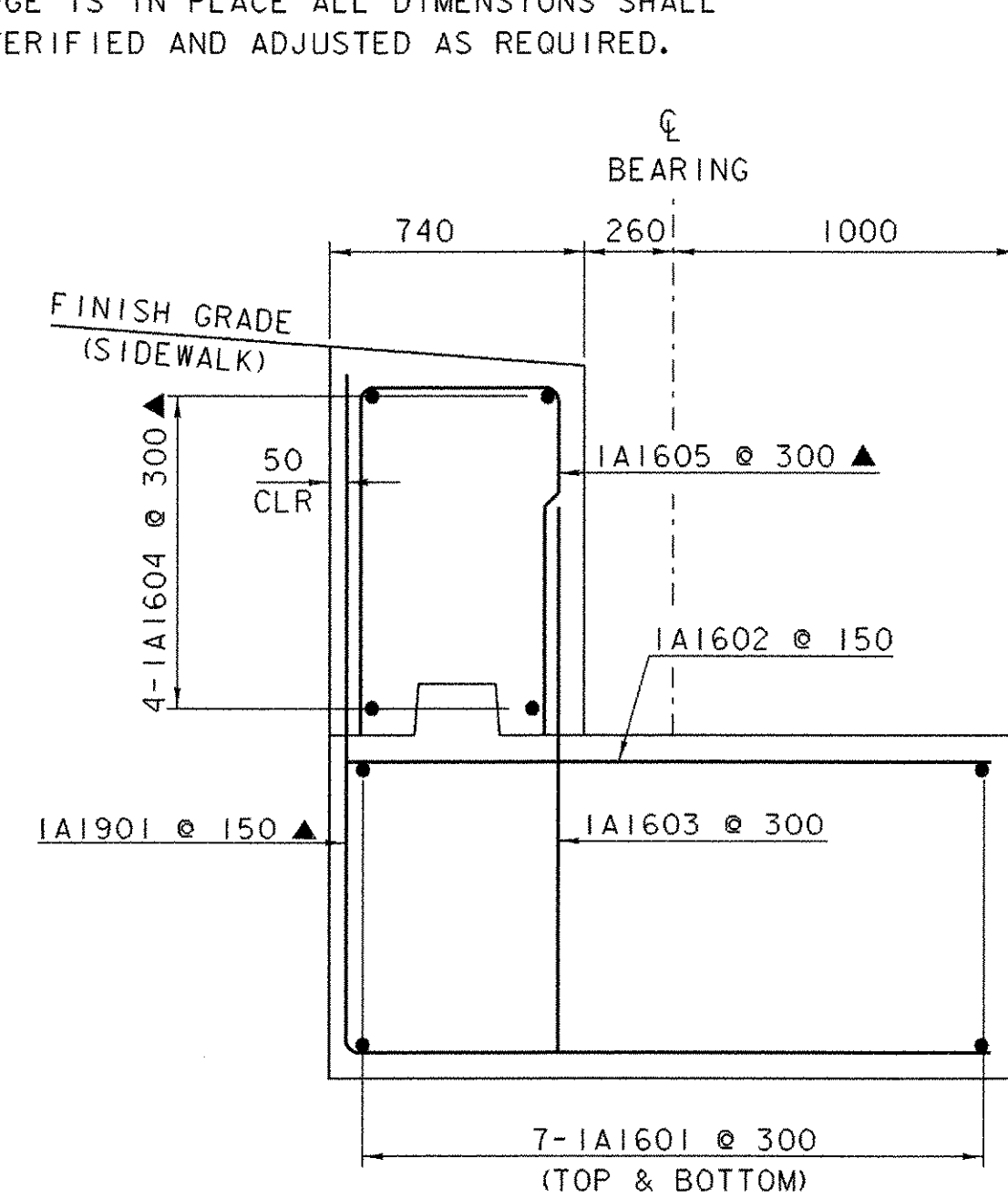
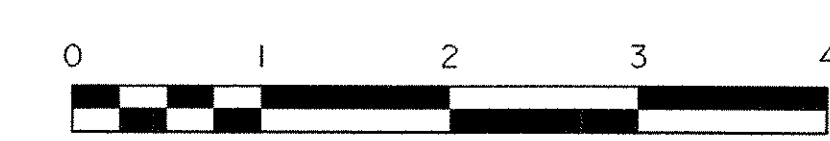
BACKWALL NO. 1 REINFORCEMENT PLAN

SCALE = 1:40

NOTE:
ALL DIMENSIONS AND ELEVATIONS SHOWN ALONG BACKWALL ARE THEORETICAL. AFTER THE BRIDGE IS IN PLACE ALL DIMENSIONS SHALL BE VERIFIED AND ADJUSTED AS REQUIRED.

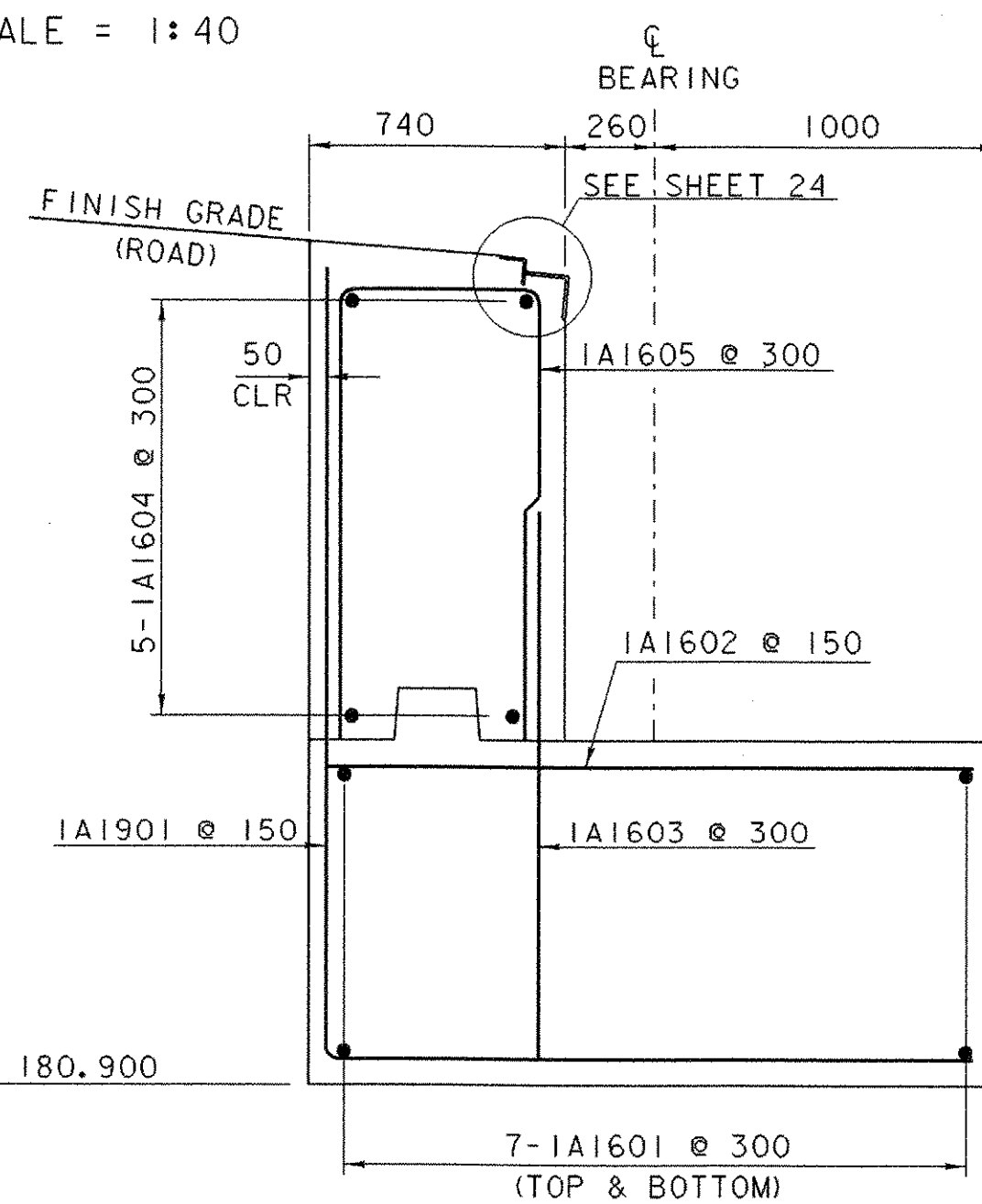
NOTE:

NF = NEAR FACE
FF = FAR FACE
EF = EACH FACE
▲ = CUT TO FIT IN FIELD
75 CLR. UNLESS OTHERWISE SPECIFIED ON THE PLANS.
ALL LAPS 660 UNLESS OTHERWISE SPECIFIED ON THE PLANS.



SECTION C-C

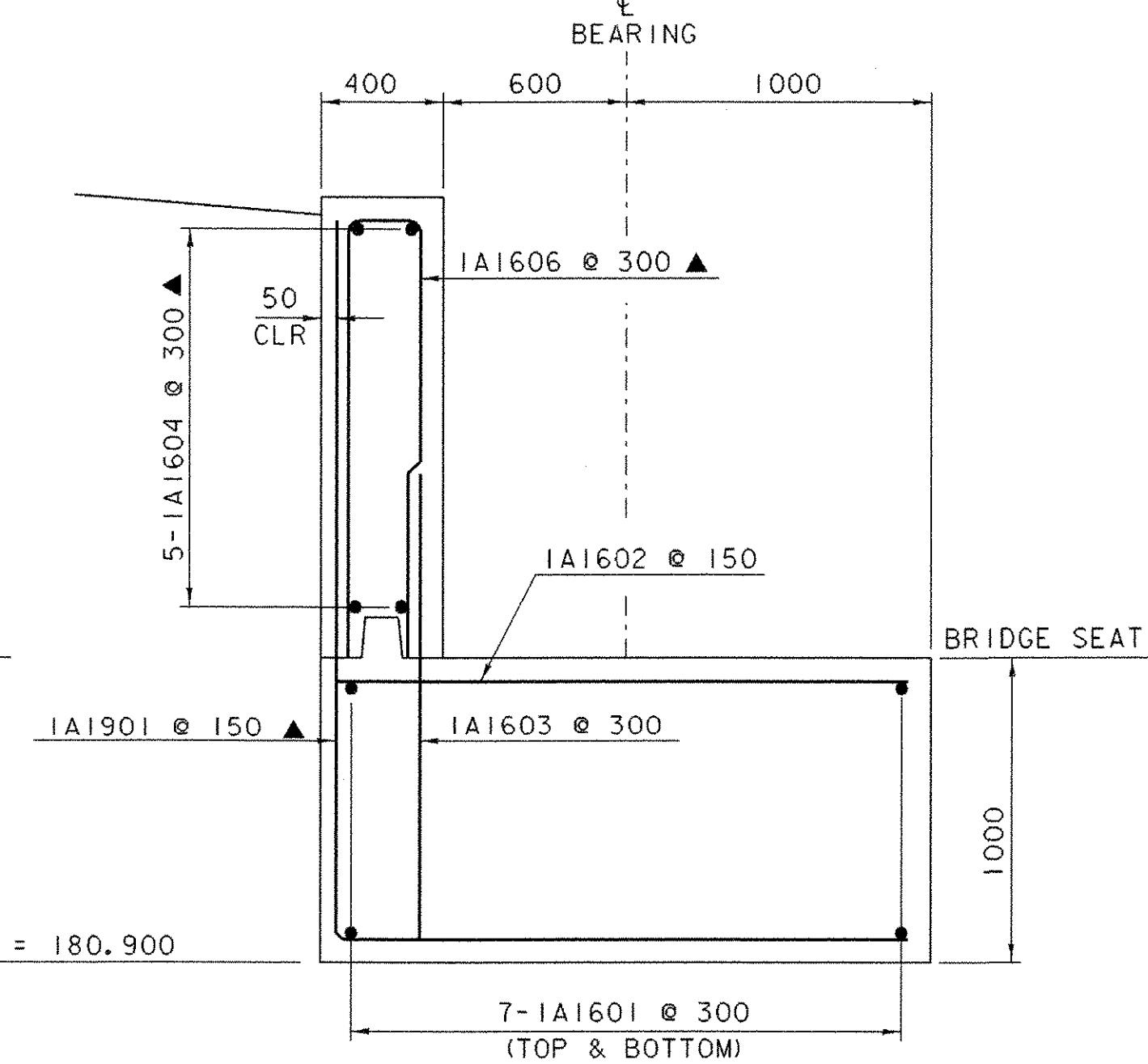
SCALE = 1:20



SECTION B-B

SCALE = 1:20

NOTE:
POUR BACKWALL AFTER BRIDGE IS IN PLACE



SECTION A-A

SCALE = 1:20

PROJECT: BETHEL	REFERENCE SHEET II	PROJECT NO. : BRF 0241 (33) - C 1
DESIGN FILE NAME: 96j250/structures/sj250ab-c1.dgn	IPARM FILE NAME: s96j250ab1.i	PLOT DATE: 14-APR-2005
DESIGNED BY: K. M. HIGGINS	SQUAD LEADER: C. P. WILLIAMS	DRAWN BY: K. M. HIGGINS
ABUTMENT NO. 1 DETAILS		CHECKED BY: C. P. WILLIAMS
		SHEET: 126 OF 130