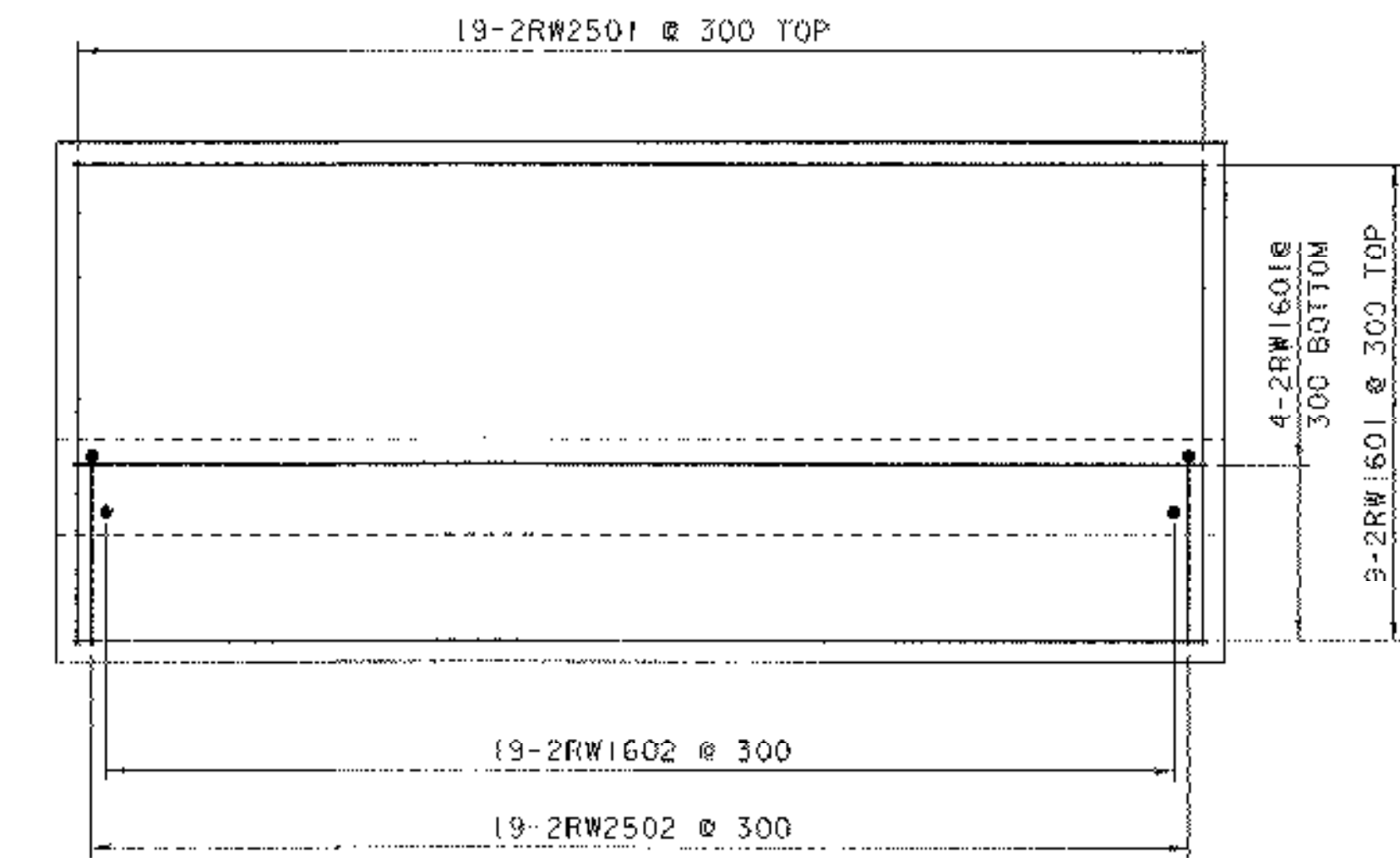
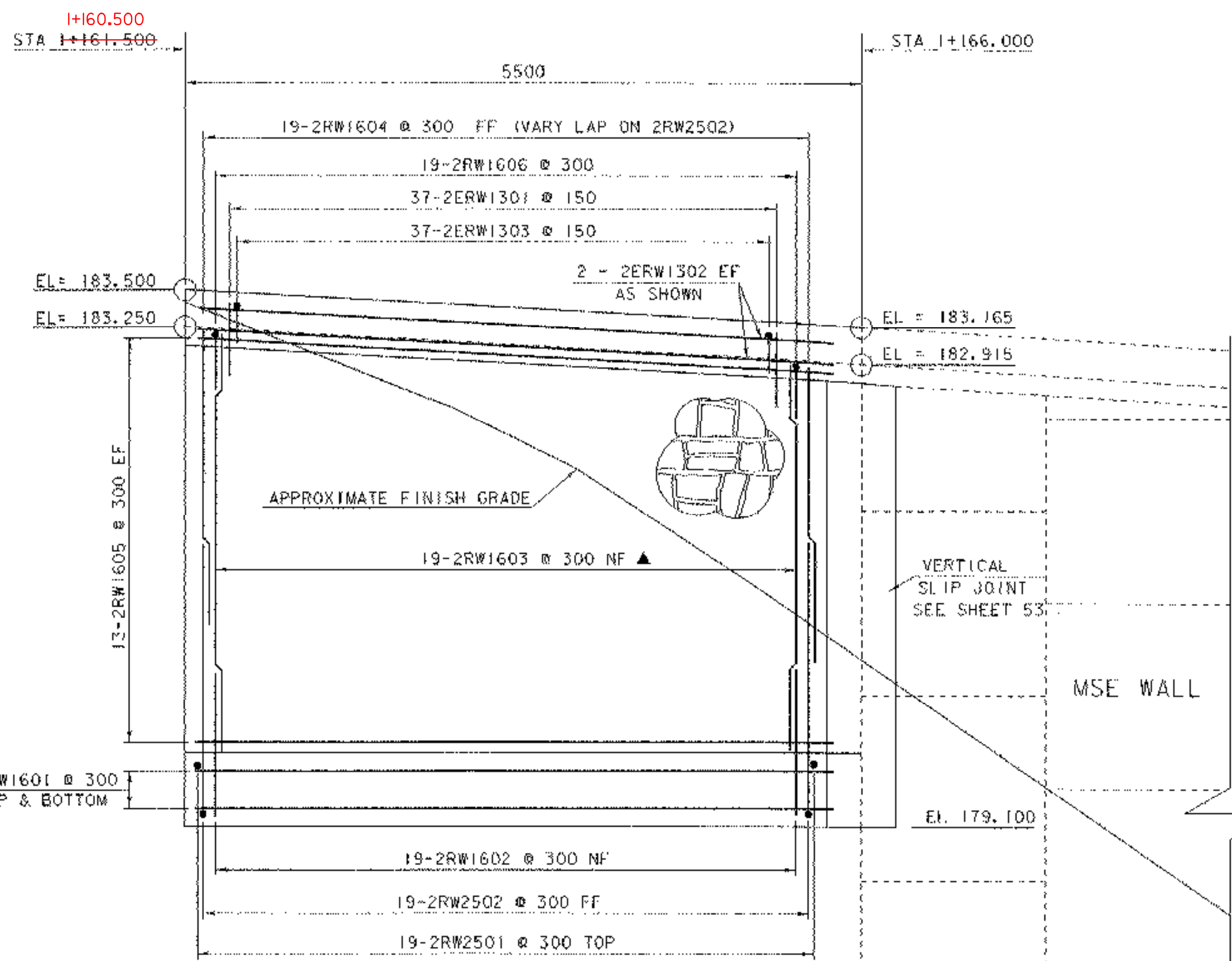


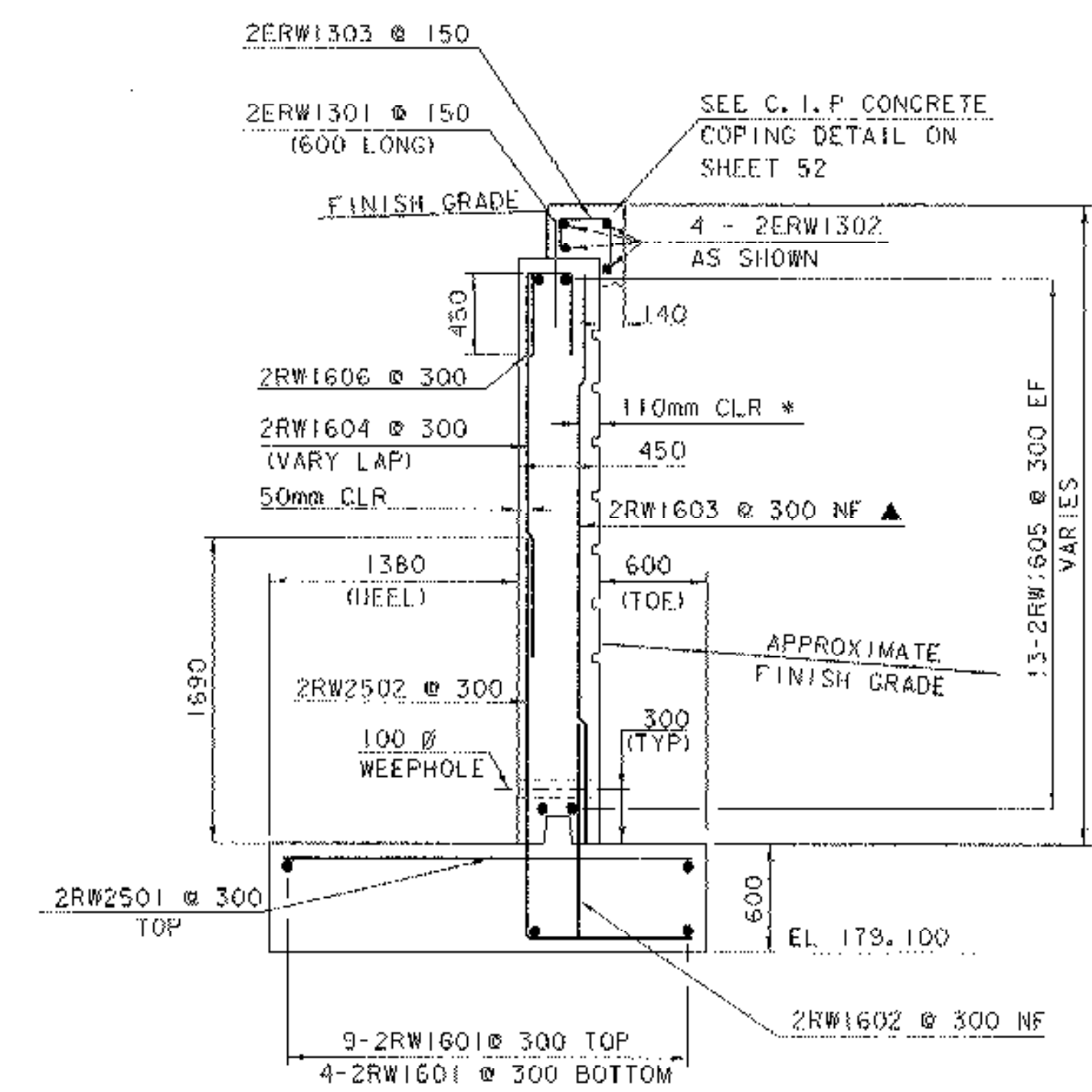
RETAINING WALL #2 PLAN
SCALE = 1:30



FOOTING REINFORCEMENT PLAN
RETAINING WALL #2
SCALE = 1:30



RETAINING WALL #2 ELEVATION
SCALE = 1:30



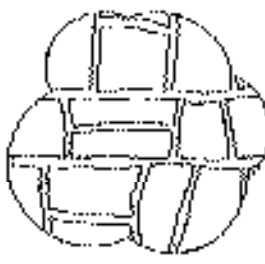
TYPICAL SECTION
RETAINING WALL #2
SCALE = 1:30

* CLEAR COVER INCLUDES 30mm FOR MAXIMUM FORM LINER RELIEF



NOTES:

- NF = NEAR FACE
- FF = FAR FACE
- EF = EACH FACE
- ▲ = CUT TO FIT IN FIELD
- 80mm CLEAR UNLESS OTHERWISE SPECIFIED ON PLANS
- ALL LAPS ARE 660mm UNLESS OTHERWISE SPECIFIED ON PLANS



RUSTIC ASHLAR CUSTOM
ROCK #1003 OR EQUIVALENT
FORM LINERS AS SPECIFIED
CONTINUE 150mm BELOW
GROUND LEVEL

NOTE:
CONTRACTOR MAY CHOOSE TO EXTEND THE MSE WALL INSTEAD OF CONSTRUCTING RETAINING WALL #2. IF THIS ACTION IS TAKEN, PART OF THE OLD ABUTMENT #1 MAY HAVE TO BE REMOVED. REVISED MSE WALL DETAILS SHALL BE SUBMITTED TO THE PROJECT MANAGER FOR APPROVAL.

NOTE:

- NF = NEAR FACE
- FF = FAR FACE
- EF = EACH FACE
- ▲ = CUT TO FIT IN FIELD
- 80 CLR. UNLESS OTHERWISE SPECIFIED ON THE PLANS.

PROJECT: BETHEL	PROJECT NO.: BRF0241 (33) C/2
DESIGN FILE NAME: 02c180/structures/s02c180retainwall.dgn	IPARM FILE NAME: s02c180retwlf12.i
DESIGNED BY: E.L.RUSTAY	DRAWN BY: E.L.RUSTAY
SQUAD LEADER: C.P.WILLIAMS	CHECKED BY: K.M.HIGGINS
RETAINING WALL #2 DETAILS	SHEET: 69 OF 130