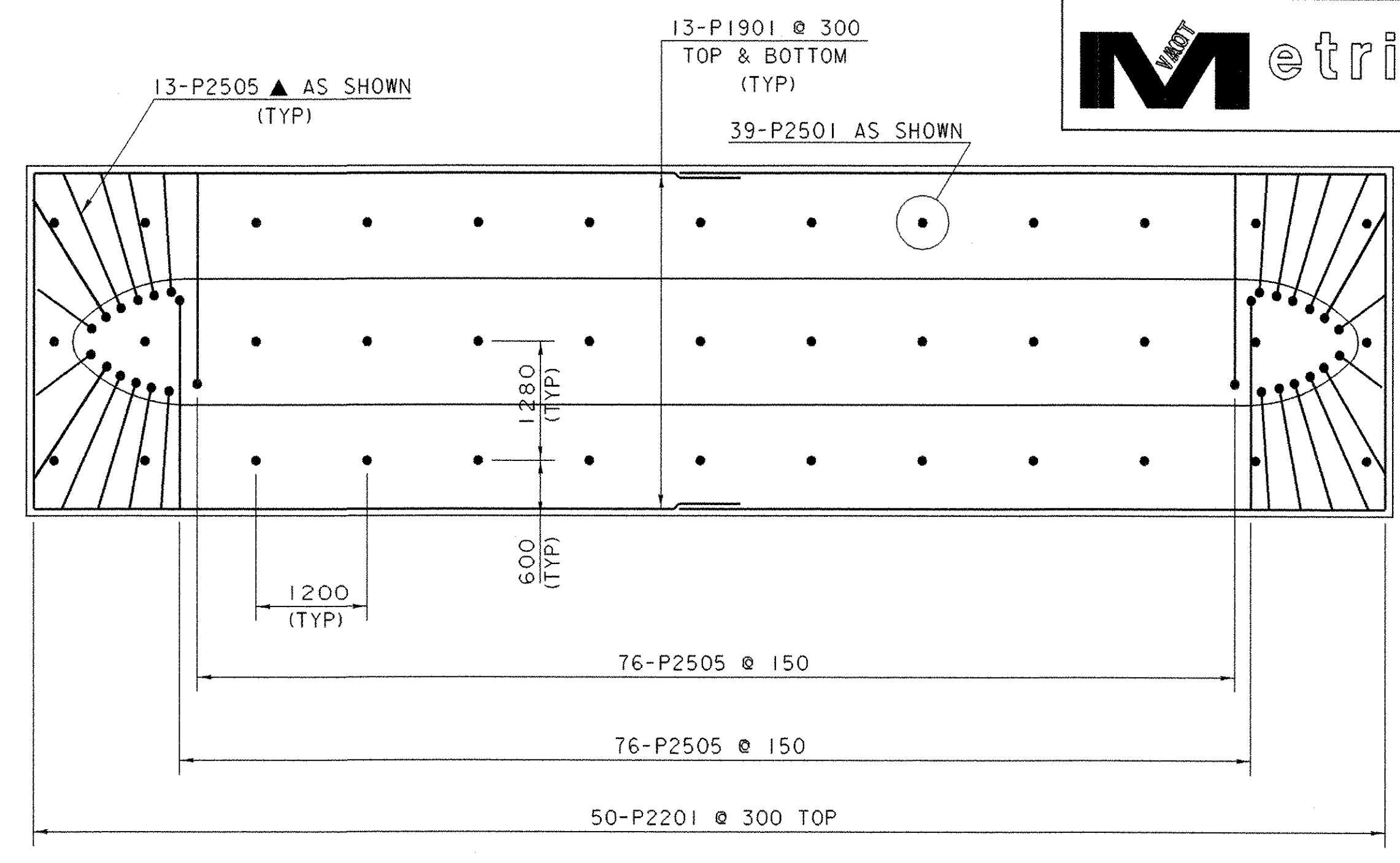
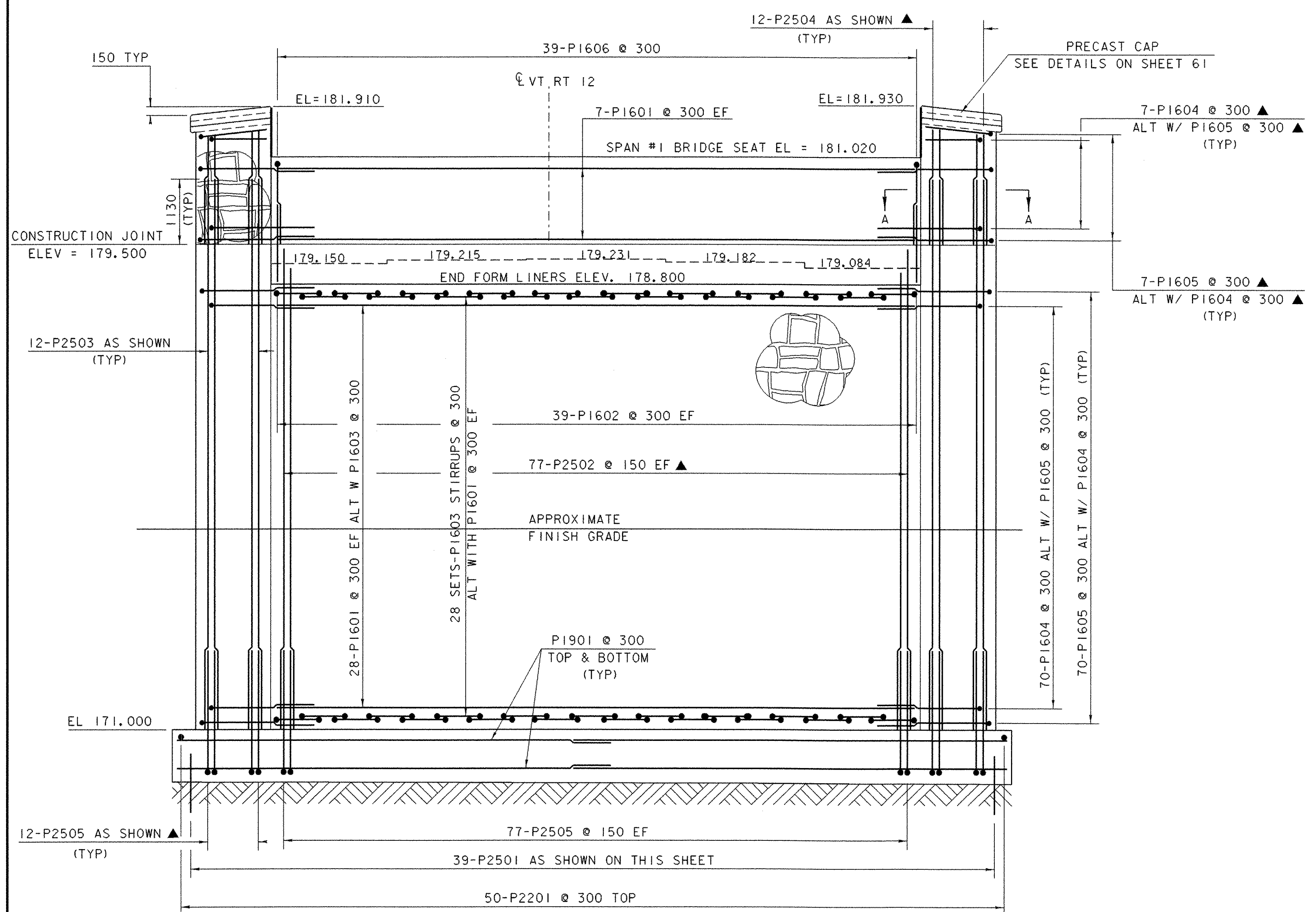


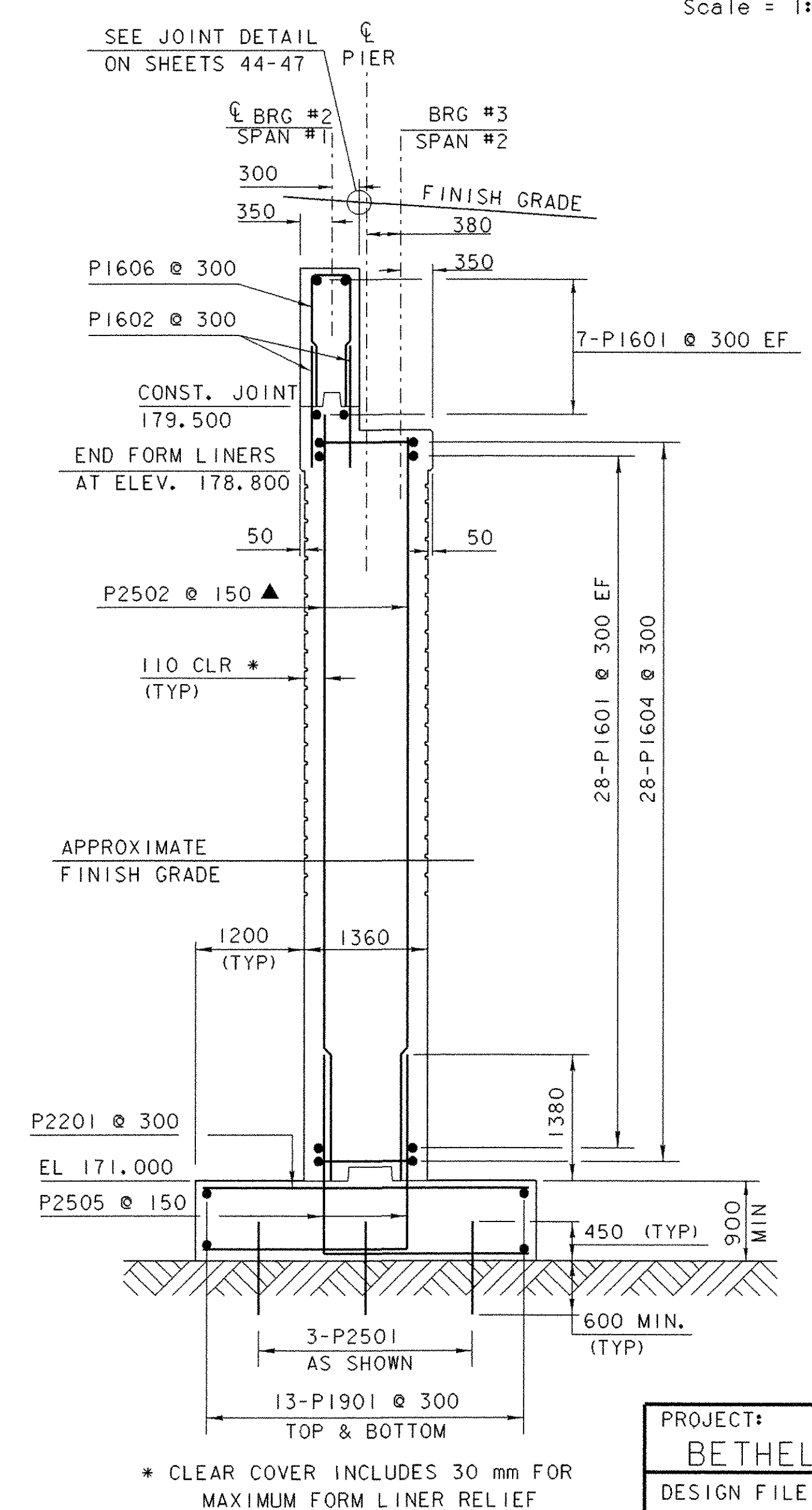
**PIER PLAN**  
Scale = 1:50



**PIER FOOTING REINFORCEMENT PLAN**  
Scale = 1:50



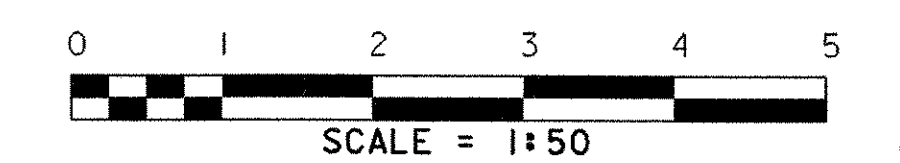
**PIER ELEVATION**  
Scale = 1:50



**PIER TYPICAL SECTION**  
Scale = 1:50

- NOTES:**
- NF = NEAR FACE
  - FF = FAR FACE
  - EF = EACH FACE
  - ▲ = CUT TO FIT IN FIELD
  - 80mm CLEAR UNLESS OTHERWISE SPECIFIED ON PLANS
  - ALL LAPS ARE 660mm UNLESS OTHERWISE SPECIFIED ON PLANS

RUSTIC ASHLAR CUSTOM ROCK #11003 OR EQUIVALENT FORM LINERS AS SPECIFIED CONTINUE 150mm BELOW GROUND LEVEL



PROJECT: <b>BETHEL</b>	PROJECT NO.: <b>BRF0241 (33) C/2</b>
DESIGN FILE NAME: 02c180/structures/s02c180pier.dgn	PLOT DATE: 14-APR-2005
IPARM FILE NAME: s02c180pier.i	DRAWN BY: E.L.RUSTAY
DESIGNED BY: K.M.HIGGINS	CHECKED BY: K.M.HIGGINS
SQUAD LEADER: C.P.WILLIAMS	PIER PLAN AND REINFORCEMENT
	SHEET: 60 OF 130