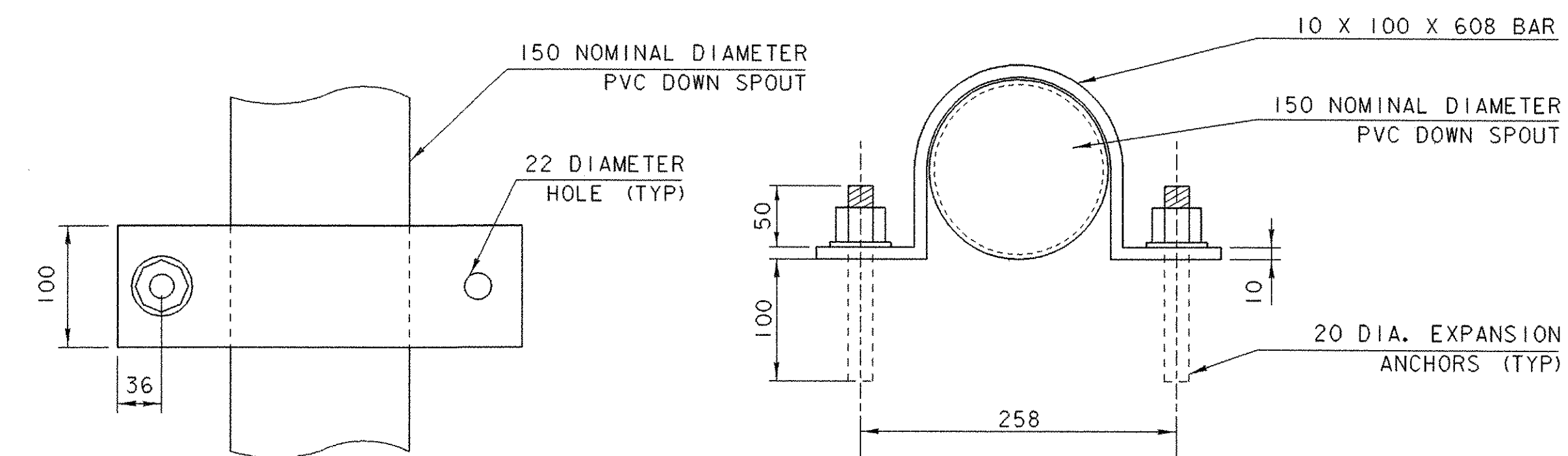
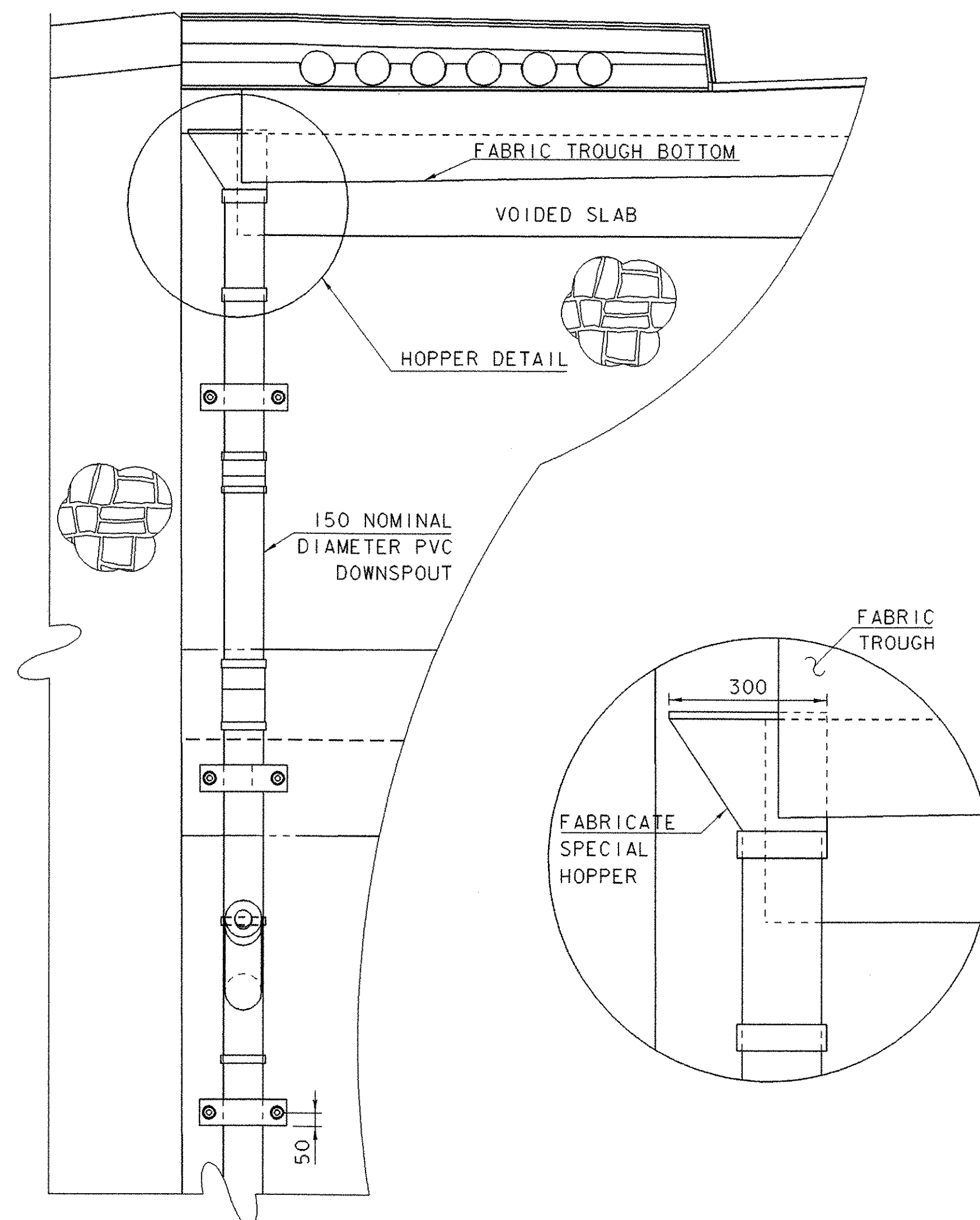
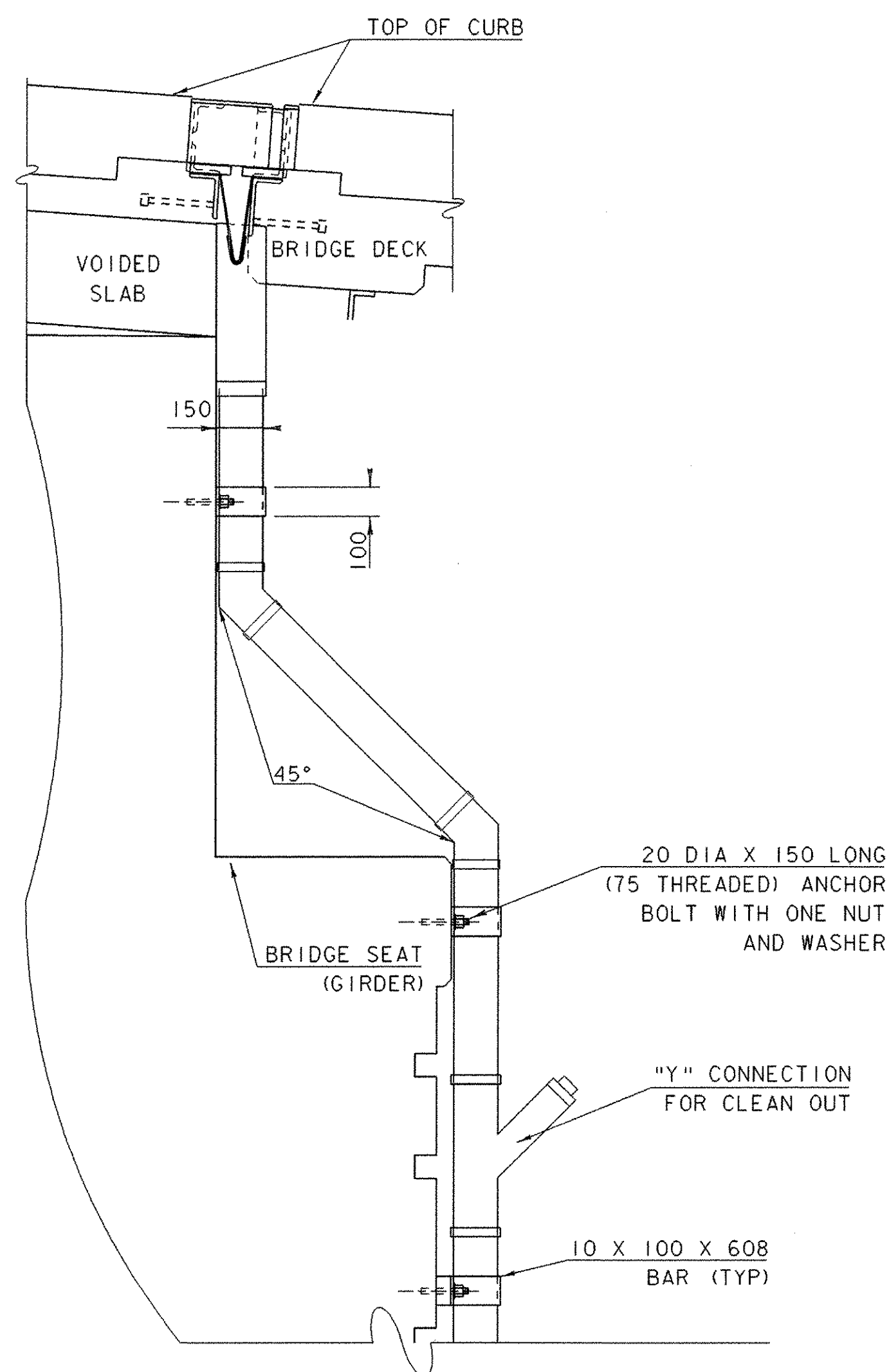


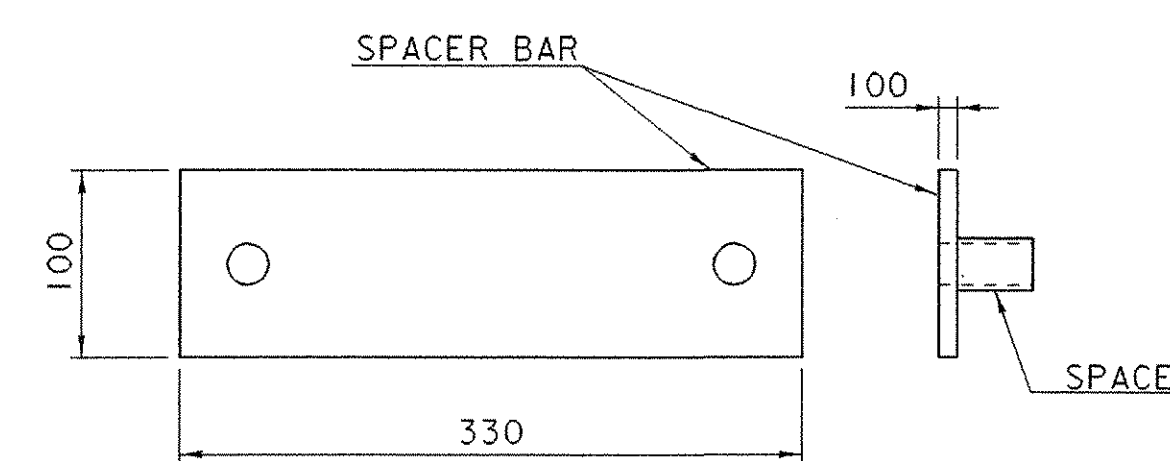
DOWNSPOUT NOTES

1. ALL PLATES, BARS, AND ANGLES SHALL CONFORM TO AASHTO M 270M/M 270 GRADE 250 AND SHALL BE GALVANIZED PER AASHTO M 111M/M 111.
2. ALL BOLTS AND RELATED HARDWARE SHALL BE ASTM A-307 AND SHALL BE GALVANIZED IN ACCORDANCE WITH AASHTO M 232M/M 232.
3. HOPPER, DOWNSPOUT, BAR, AND DOWNSPOUT JOINTS SHALL BE PAID FOR UNDER THE ITEM 506.80 "DRAIN TROUGH (MOD)".
4. REINFORCING STEEL IN PIER SHALL BE LOCATED BEFORE INSTALLING EXPANSION ANCHORS FOR DOWNSPOUT. ANCHORS SHALL BE LOCATED 25 FROM PIER REINFORCING.
5. SEE SPECIAL PROVISIONS FOR MORE INFORMATION.



DETAIL FOR ATTACHING DOWNSPOUT TO PIER (TYP)

NTS

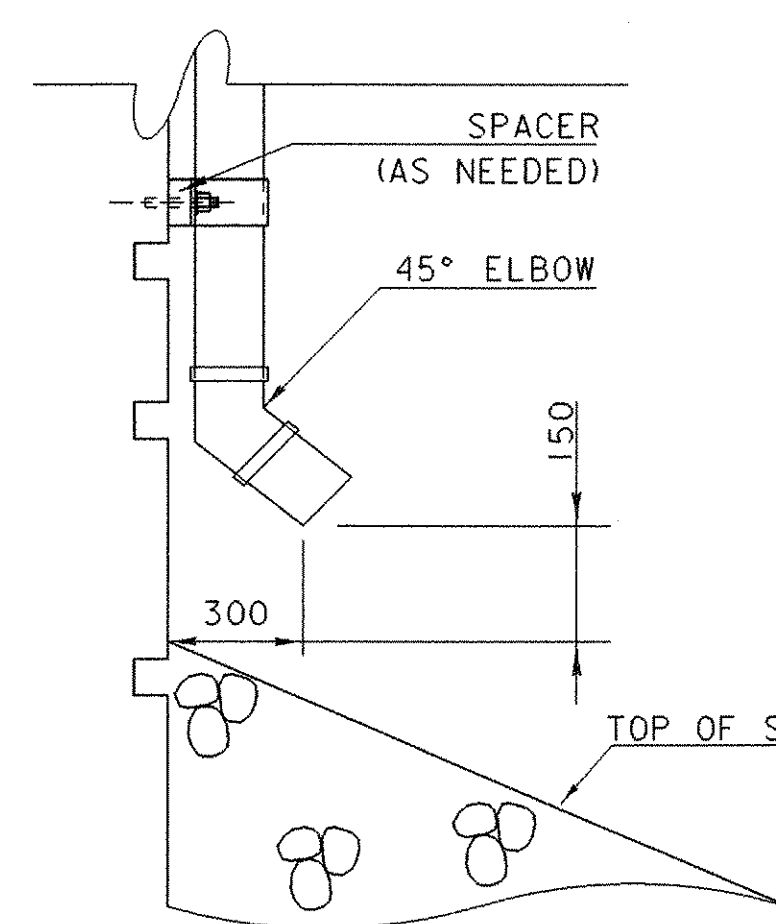


SPACER DETAIL

NOTE: SPACER BAR WILL BE A 10 X 100 X 330 BAR AND MADE OF THE SAME MATERIAL AS THE DOWNSPOUT BRACKETS. THE SPACERS BEHIND THE SPACER BAR SHALL BE MADE OF GALVANIZED PIPE WITH AN INSIDE DIAMETER OF 22mm AND A MINIMUM WALL THICKNESS OF 3mm. USE SPACER BAR AND SPACERS AS NEEDED. SPACERS ARE TO BE CUT TO LENGTH IN FIELD.

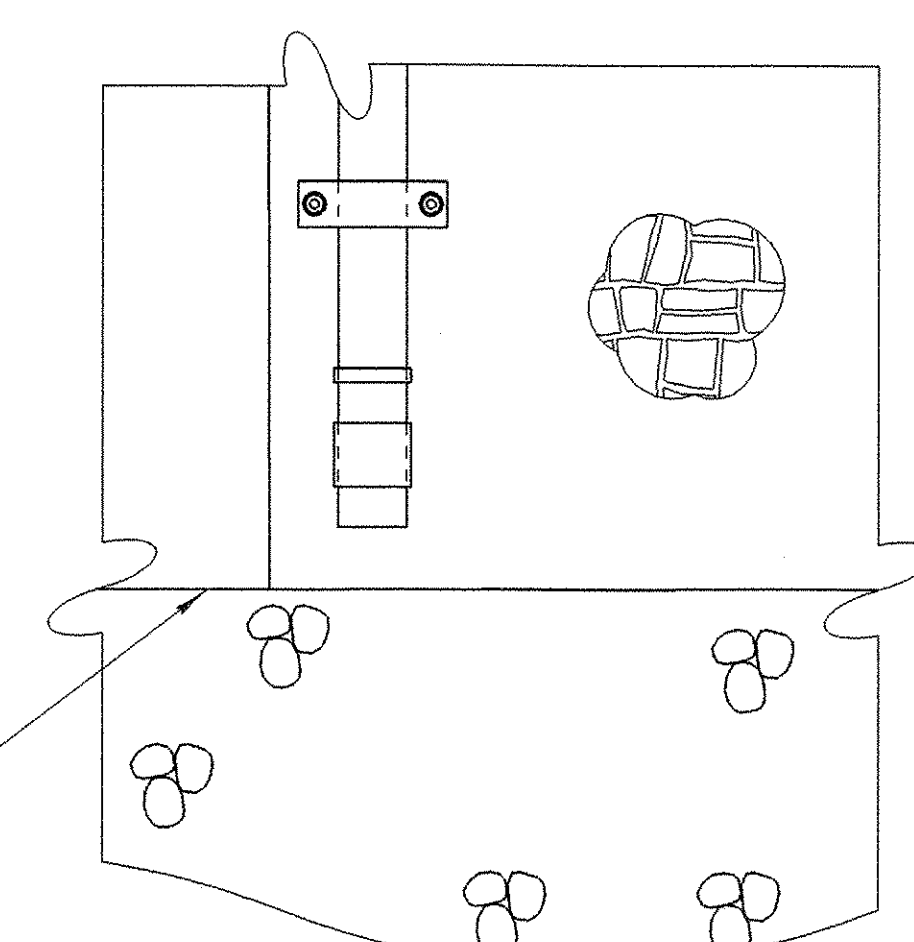
NOTE: DOWNSPOUT LOCATION PLAN ON THE CURB SIDE IS SIMILAR TO THE SIDEWALK DETAIL.

HOPPER DETAIL



SECTION A - A

NTS

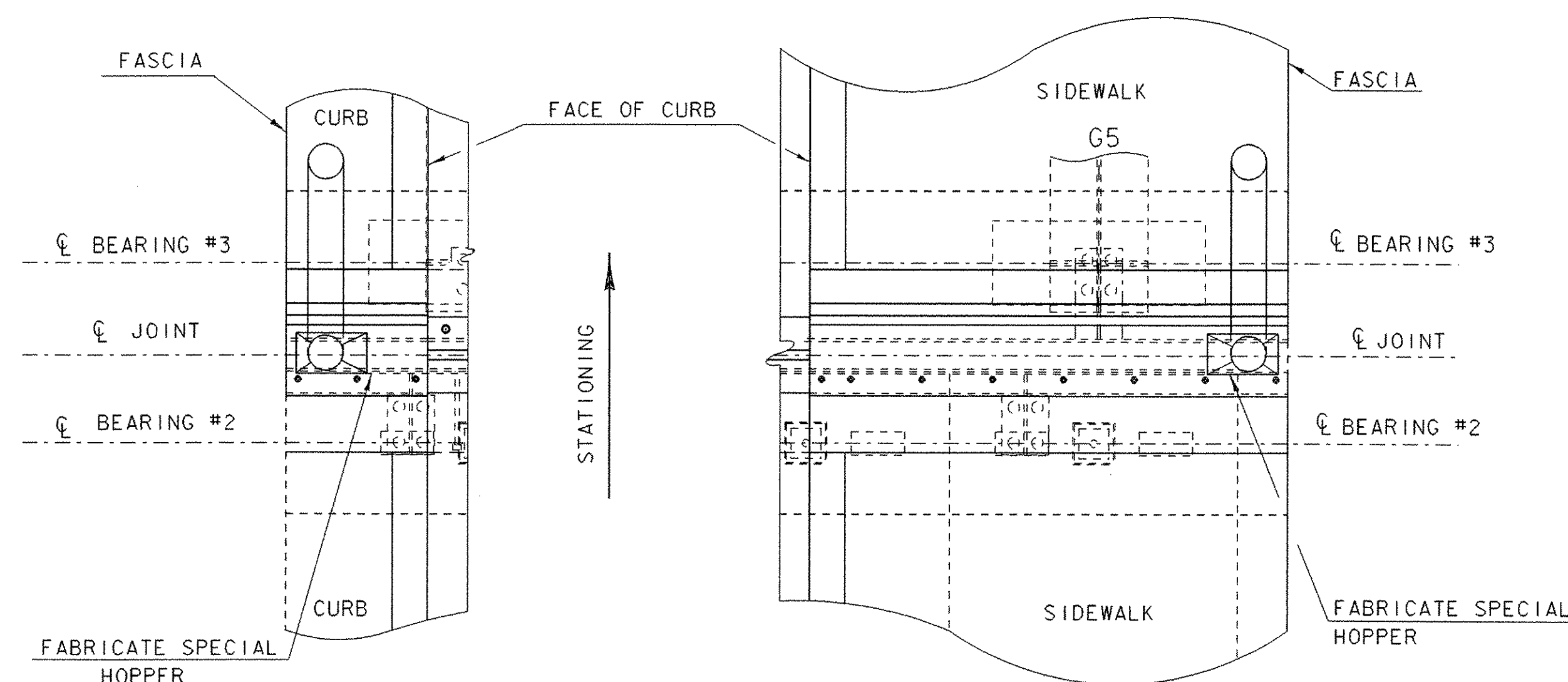


SECTION B - B

NTS

DOWNSPOUT LOCATION PLAN

NOT TO SCALE



PLAN VIEW OF DOWNSPOUT LEFT

NTS

PLAN VIEW OF DOWNSPOUT RIGHT

NTS

PROJECT: BETHEL	PROJECT NO.: BRF0241 (33) C/2
DESIGN FILE NAME: 02c180/structure/s02c180expjoint.dgn	PLOT DATE: 15-APR-2005
IPARM FILE NAME: downspout.i	DRAWN BY: H. SALLS
DESIGNED BY: H. SALLS	CHECKED BY: M. GAGULIC
SQUAD LEADER: C. P. WILLIAMS	SHEET: 47 OF 130
DOWNSPOUT DETAIL	