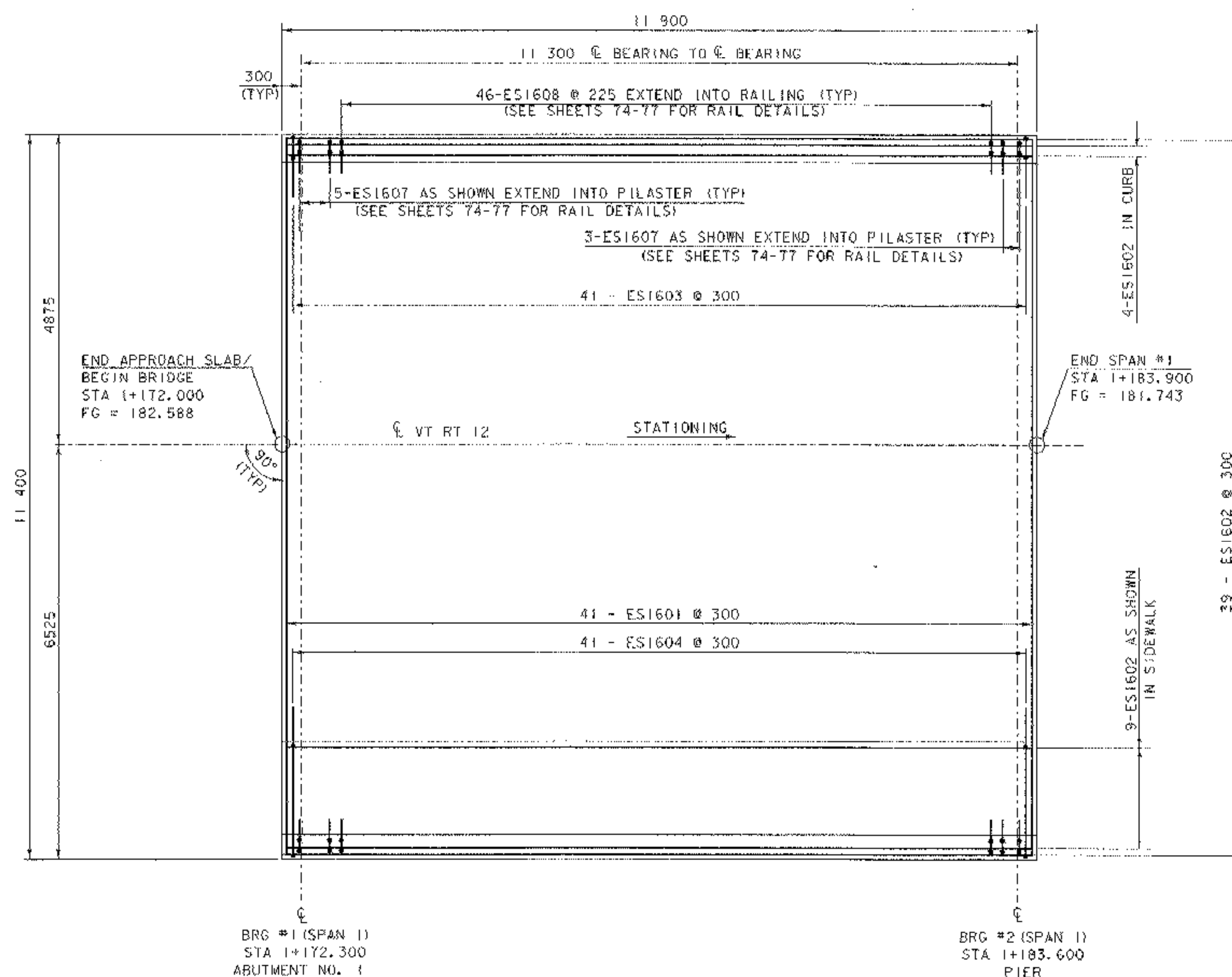


**TYPICAL SECTION - SPAN #1**  
SCALE = 1:40

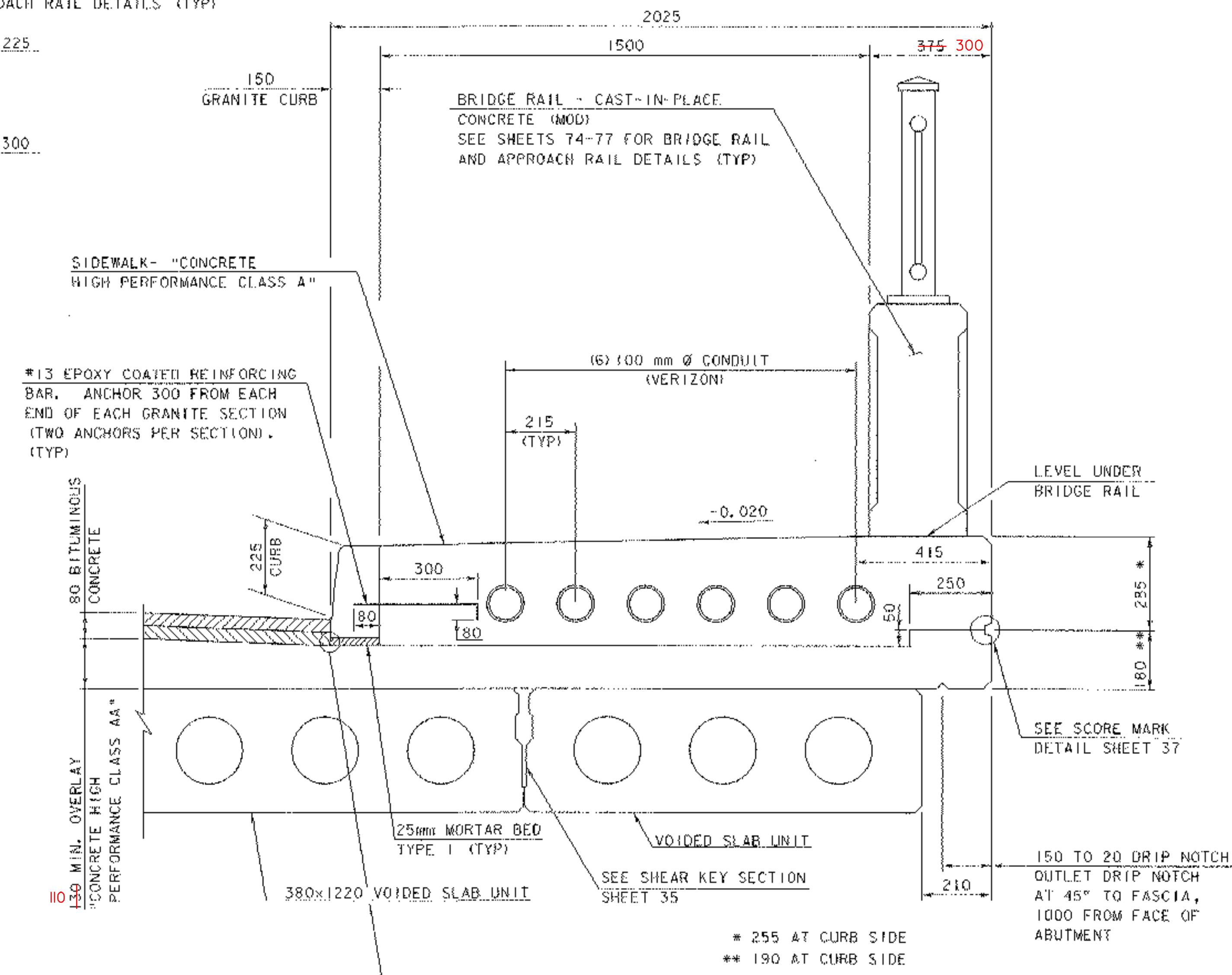


**OVERLAY REINFORCING - SPAN #1**  
SCALE = 1:50

BRIDGE RAIL - CAST-IN-PLACE CONCRETE (MOD) SEE SHEETS 74-77 FOR BRIDGE RAIL AND APPROACH RAIL DETAILS (TYP)

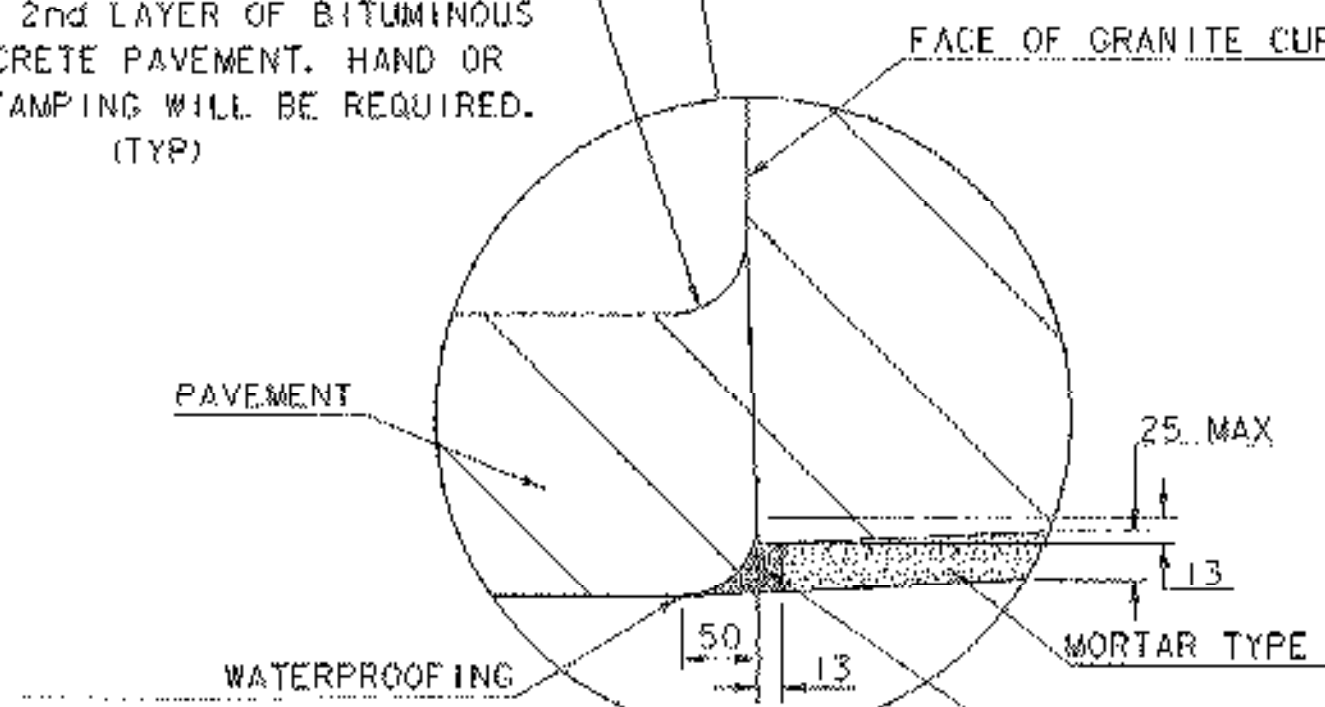
ES1608 @ 225 (TYP)

ES1604 @ 300



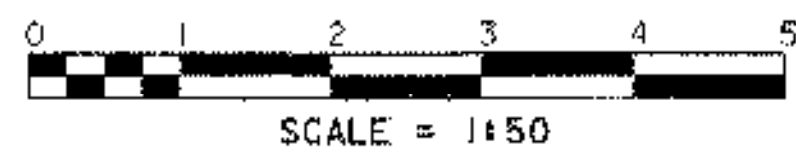
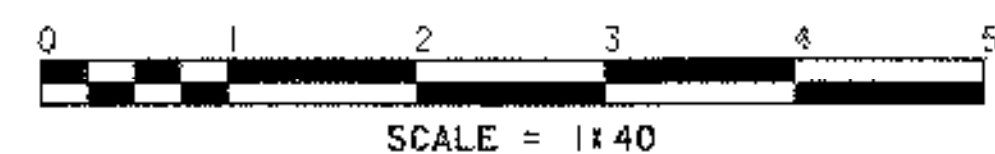
**SIDE WALK / CURB DETAIL SPAN #1**

FILLET SHALL BE PLACED AS PART OF THE 2nd LAYER OF BITUMINOUS CONCRETE PAVEMENT. HAND OR MECHANICAL TAMPING WILL BE REQUIRED. (TYP)



NOTE: THE BACK FACE OF GRANITE CURB SHALL BE SATURATED SURFACE DRY IMMEDIATELY PRIOR TO PLACEMENT OF ADJACENT SIDEWALK OR CURB CONCRETE.

**NOTES:**  
 NF = NEAR FACE  
 FF = FAR FACE  
 EF = EACH FACE  
 ▲ = CUT TO FIT  
 ALL LAPS SHALL BE 660 IN FIELD UNLESS NOTED OTHERWISE  
 ALL REINFORCING STEEL SHALL BE EPOXY COATED.



PROJECT: <b>BETHEL</b>	PROJECT NO. 7 <b>BRF0241 (33) C/2</b>
DESIGN FILE NAME: 02c180\Structures\02c180sup.dgn	PLOT DATE: 15-APR-2005
IPARM FILE NAME: 02c180sp1plan.i	DESIGNED BY: K.HIGGINS
SQUAD LEADER: C.P.WILLIAMS	DRAWN BY: M.LONGSTREET
SPAN #1 PLAN & TYPICAL SECTION	CHECKED BY: K.HIGGINS
	SHEET: 33 OF 130