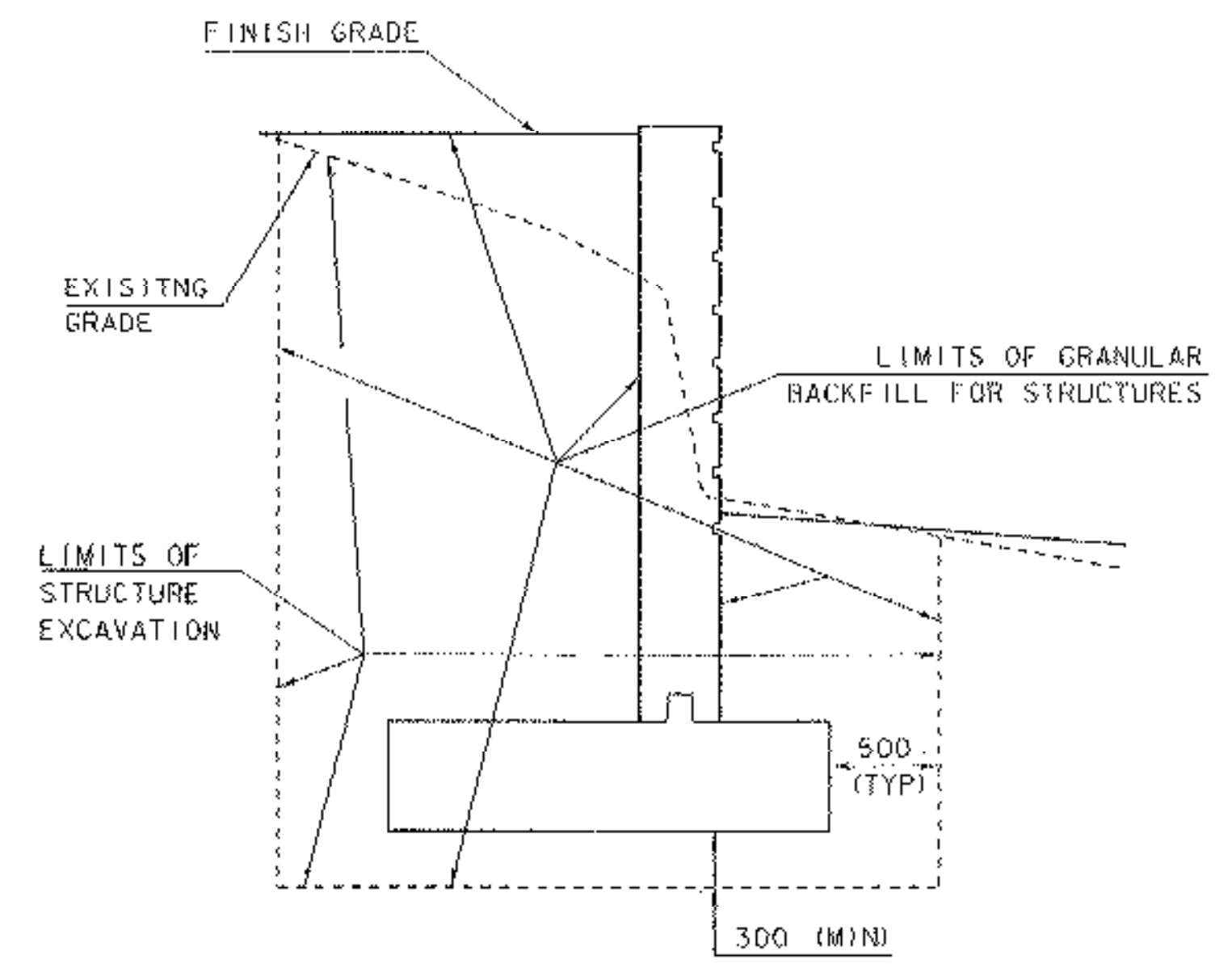


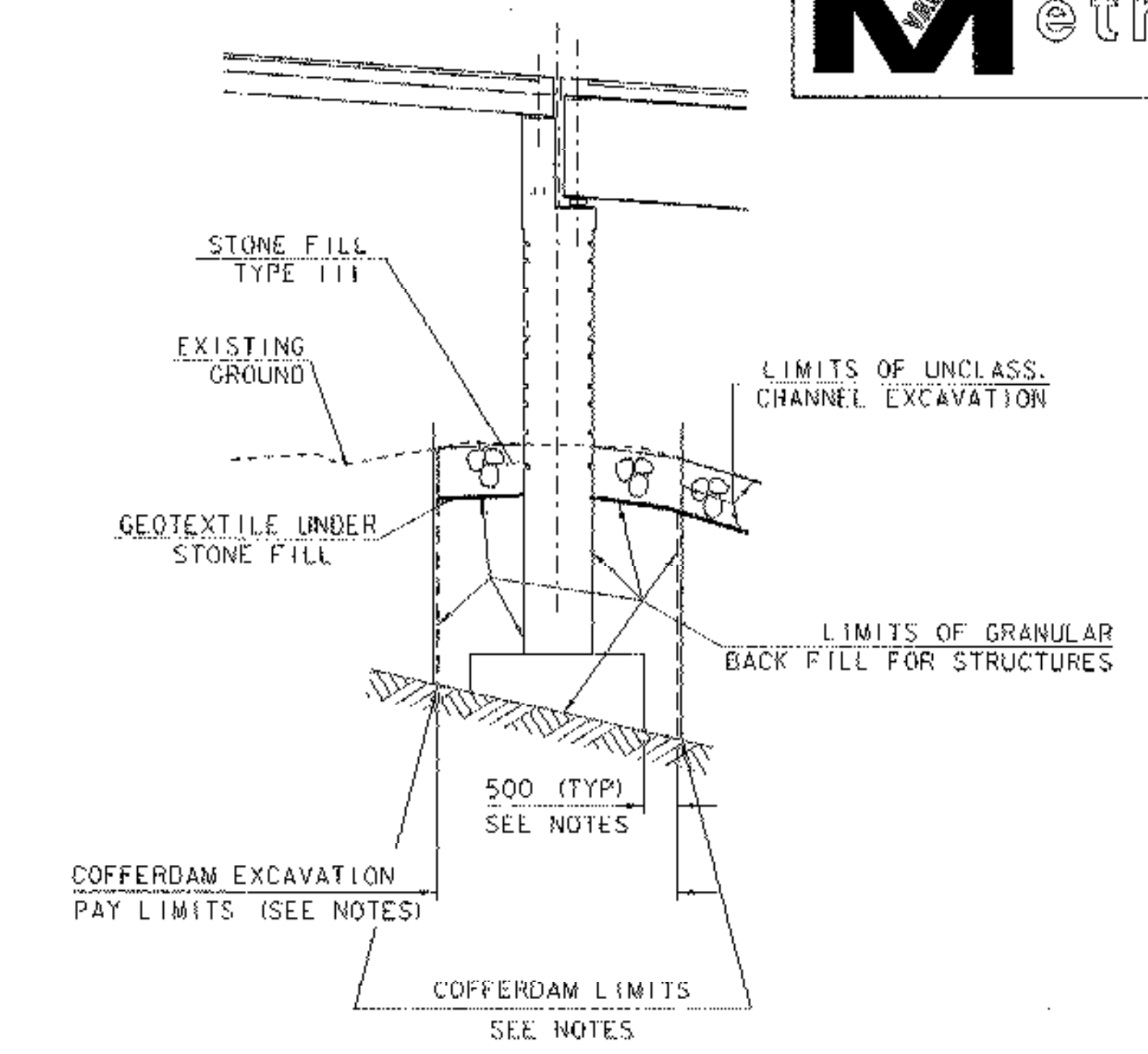
**ABUTMENT No 1 EARTH WORK TYPICAL SECTION**

NOT TO SCALE



**RETAINING WALL TYPICAL EARTH WORK**

NOT TO SCALE

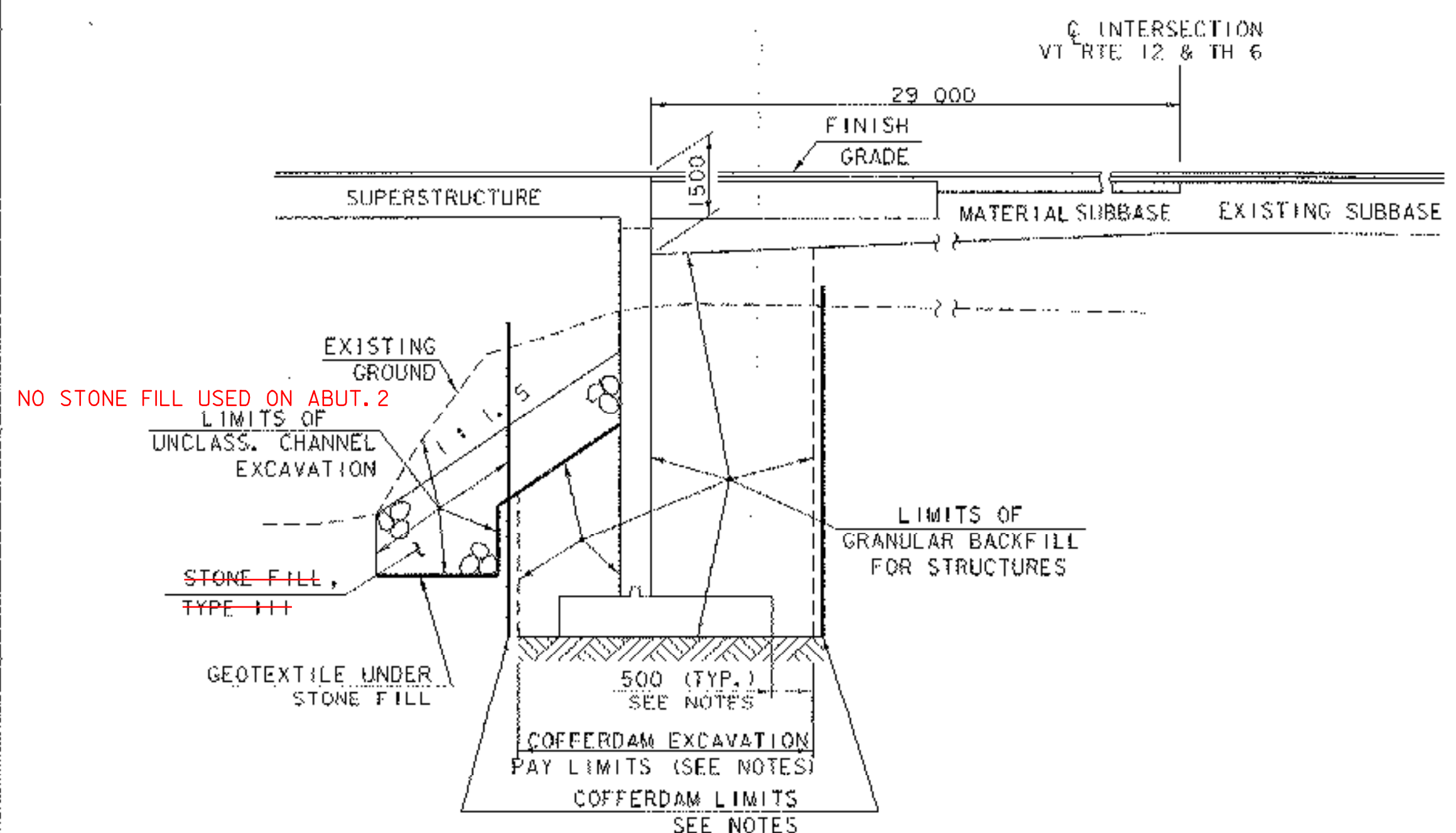


**PIER No 1 TYPICAL EARTH WORK**

NOT TO SCALE

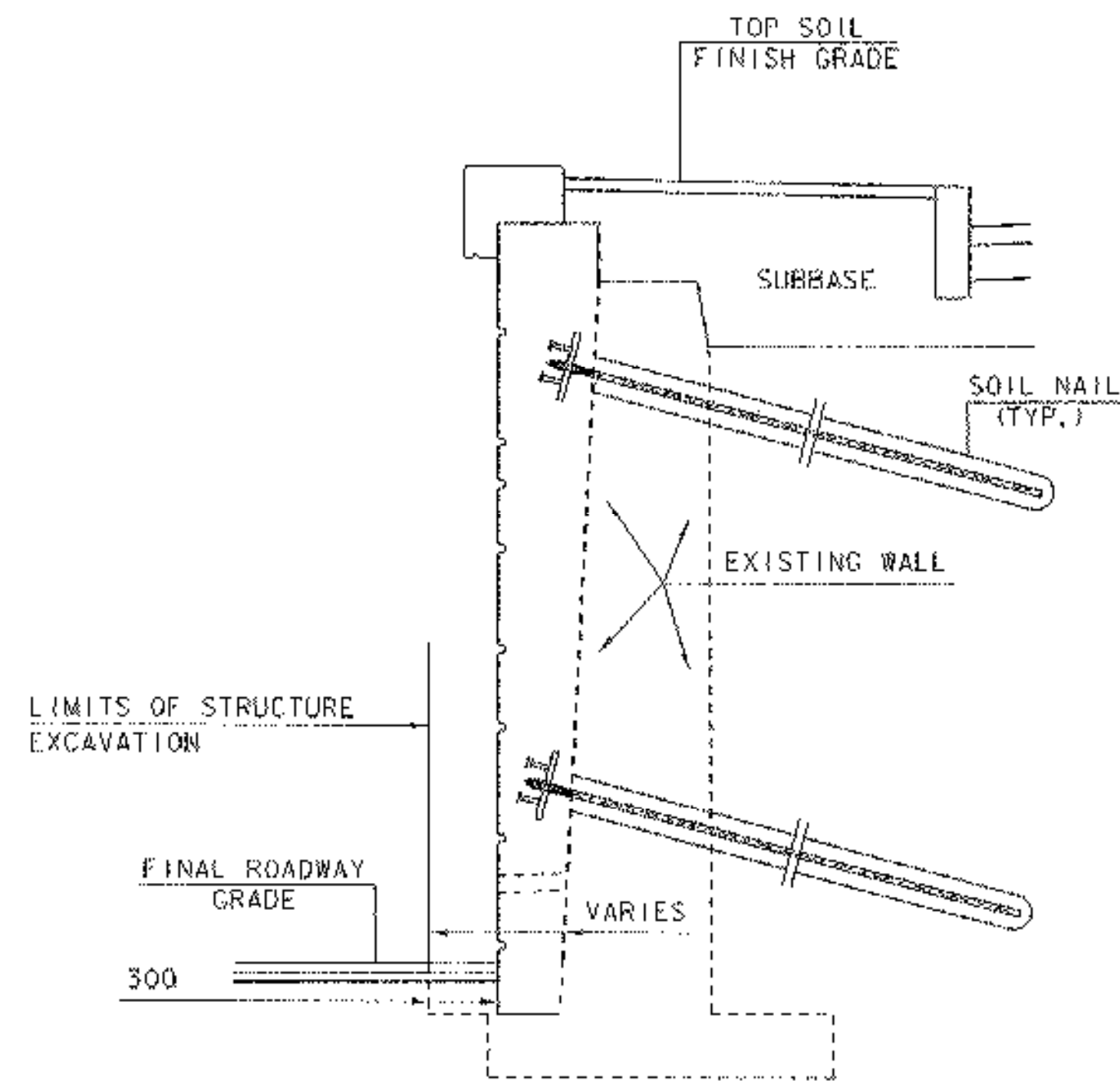
**COFFERDAM NOTES:**

1. COFFERDAM LIMITS TO BE DETERMINED BY THE CONTRACTOR.
2. THE PAY LIMITS OF COFFERDAM EXCAVATION, EARTH" AND "COFFERDAM EXCAVATION, ROCK" SHALL BE 500 OUTSIDE THE PERIMETER OF THE FOOTING, UP TO EXISTING GROUND OR BOTTOM OF SUBBASE, WHICHEVER IS LOWER.
3. IF A COFFERDAM IS CONSTRUCTED WHICH IS LARGER THAN THE INDICATED COFFERDAM EXCAVATION PAY LIMITS, PAYMENT FOR ALL UNCLASSIFIED CHANNEL EXCAVATION, INCLUDING THAT PORTION WHICH IS INSIDE THE COFFERDAM BUT OUTSIDE THE COFFERDAM EXCAVATION PAY LIMITS, WILL BE MADE AT THE CONTRACT UNIT PRICE FOR UNCLASSIFIED CHANNEL EXCAVATION.



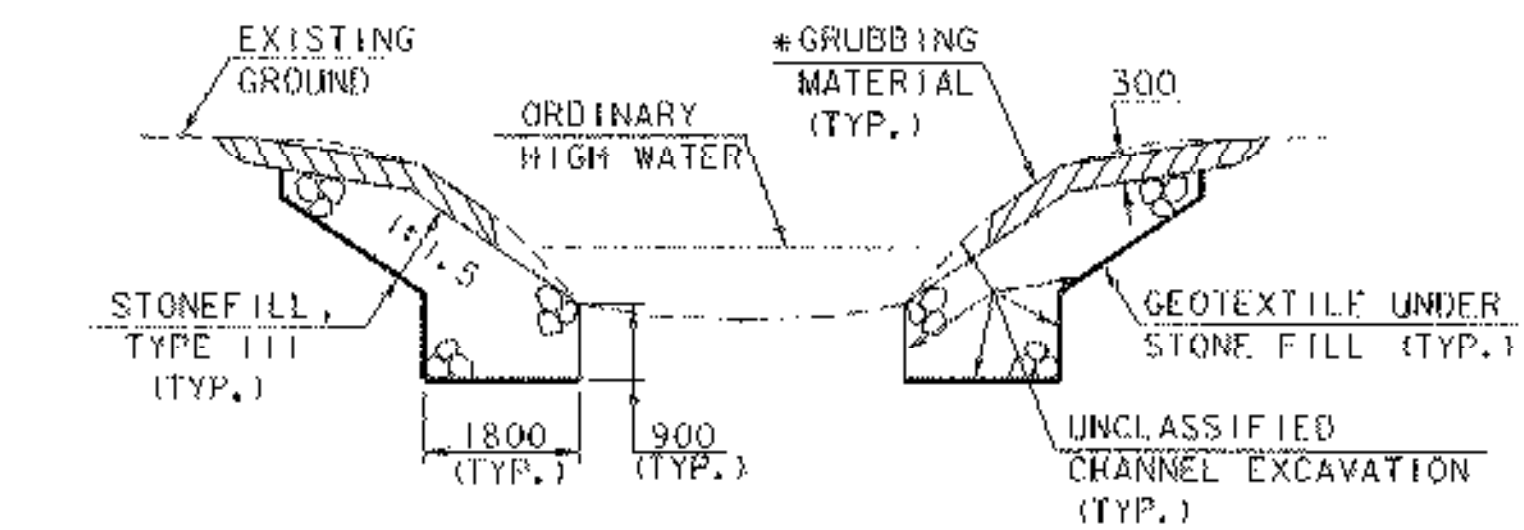
**ABUTMENT No 2 EARTH WORK TYPICAL SECTION**

NOT TO SCALE



**SOIL NAIL WALL TYPICAL EARTH WORK**

NOT TO SCALE



**TYPICAL CHANNEL SECTION**

NOT TO SCALE

\* GRUBBING MATERIAL SHALL NOT BE PLACED ON THE STONE FILL IN THE AREA UNDER THE BRIDGE. WHENEVER CHANNEL SLOPE INTERSECTS ROADWAY SUBBASE, GRUBBING MATERIAL SHALL BEGIN AT THE BOTTOM OF SUBBASE.

PROJECT:	BETHEL	PROJECT NO.:	BRF0241 (33) C/2
DESIGN FILE NAME:	02c180/structure/s02c180msdet.dgn		
IPARM FILE NAME:	s02c180strexcdet.i		
DESIGNED BY:	M. GAGULIC	DRAWN BY:	M. GAGULIC
SQUAD LEADER:	C.P. WILLIAMS	CHECKED BY:	K.M. HIGGINS
STRUCTURAL EXCAVATION DETAILS		SHEET:	30 OF 130